

ZigZag Blooms



FUSIONS

by AGF

FREE PATTERN



ZigZag Blooms



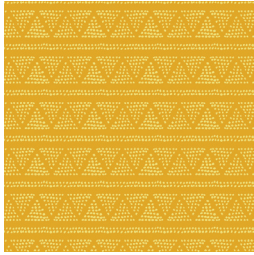
QUILT DESIGNED BY AGF STUDIO *AGFstudio*

Spices FUSION

FABRICS DESIGNED BY AGF STUDIO



FUS-S-700
WILLOW BLOOMS SPICES



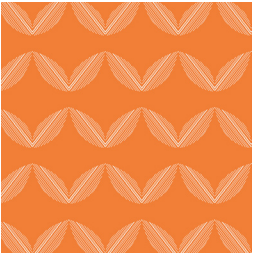
FUS-S-701
PLOTTED FARM SPICES



FUS-S-702
THRIVE SPICES



FUS-S-703
OP ART SPICES



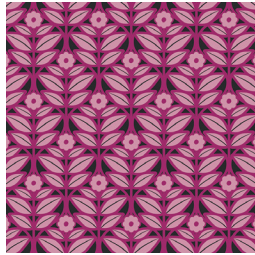
FUS-S-704
JOY PLANTE SPICES



FUS-S-705
BLOSSOM SWALE SPICES



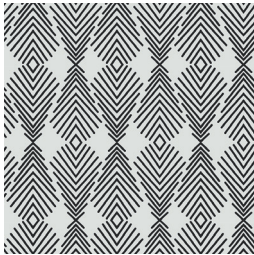
FUS-S-706
PRETTY DITSY SPICES



FUS-S-707
IMPRESSIONS SPICES



FUS-S-708
PAPAROUNES SPICES



FUS-S-709
PLUMAGE SPICES



ZigZag Blooms

FINISHED SIZE | 22' x 14'

FABRIC REQUIREMENTS

Fabric A	FUS-S-700	¼ yd.
Fabric B	DEN-S-2007	¾ yd.
Fabric C	FUS-S-709	⅛ yd.
Fabric D	DEN-S-2000	⅛ yd.

BACKING FABRIC

Fabric B - FUS-S-701 (*Included*)

CUTTING DIRECTIONS

*¼" seam allowances are included.
WOF means width of fabric.*

- Twelve (12) 2½" x 4 ½" rectangle from fabrics **A, B**
- Sixteen (16) 2⅞" perfect square from fabrics **A, B**
- Two (2) 2¼" x 14 ½" strips from fabrics **C**
- One (1) 1" x 14½" strip from Fabric **C**
- Two (2) 1 ½" x 14 ½" strips from fabrics **D**

CONSTRUCTION

Sew all rights sides together with ¼" seam allowance.

Flying Geese Construction

- Place a marked 2⅞" square from Fabric **B** right sides together on the left side of a 4½" x 2½" rectangle from Fabric **A** as shown.
- Stitch on the drawn line. Trim seam allowance to ¼". Press corner open. In the same manner, sew a 2⅞" square to the remaining corner, trim and press.
- Repeat the same process until you have twelve (12) **A-B** flying geese pieces.

- XXXXXXXXXXXXXXXXXXXXXXXXXXXX
- Now, repeat the same process with the other 4½" x 2½" rectangles from Fabric **B** with a 2⅞" square from Fabric **A**. You will have a total of twelve (12) flying geese.

A-B: Total of 12

B-A: Total of 12



DIAGRAM 1

HST Construction

- To accomplish the HST construction use the 2⅞" squares from Fabrics **A, B**
- Using a water-soluble marker or a pencil, mark a diagonal line across the wrong side of all the mentioned fabric squares (DIAGRAM 2)

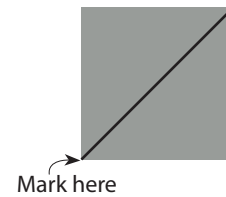


DIAGRAM 2

- Find HST combinations and quantities on diagram 2.
- Place one of the marked squares, right sides together with its corresponding square.
- Sew ¼" on both sides of the marked line.
- Cut piece in half along the drawn line.
- Press seams open
- Pair up the rest of the marked squares.
- Repeat to make a total of 8 half-square triangles.
- Set aside.

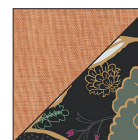
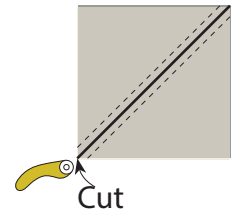
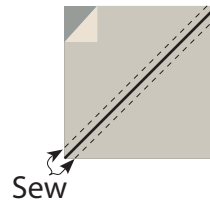
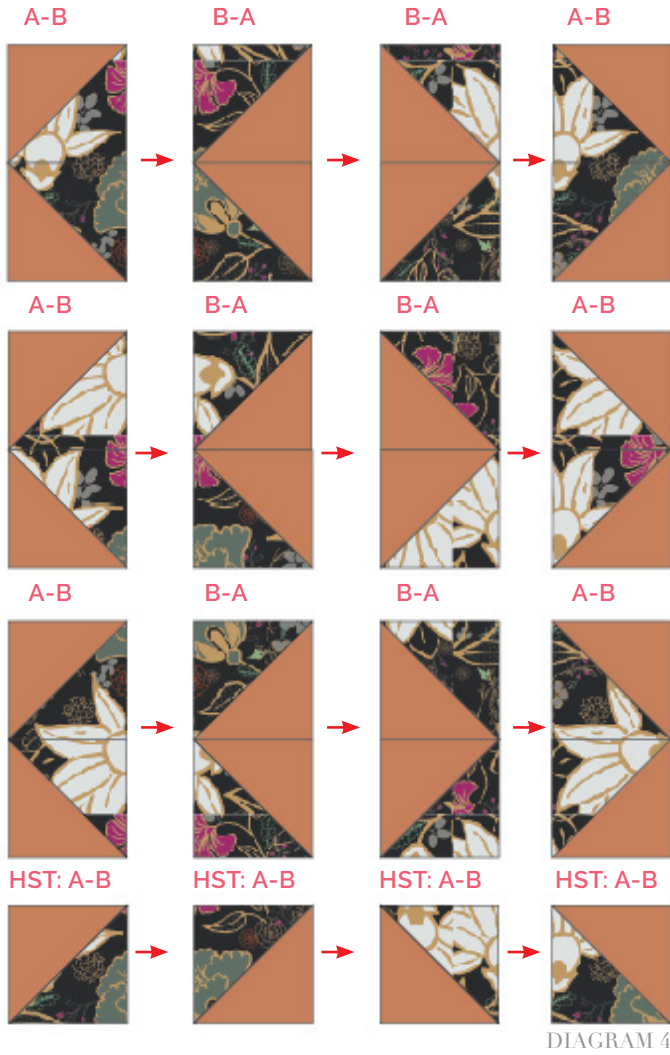


DIAGRAM 3

- Follow the diagram below for the side pillow assembly:



- Now, assemble the rows as diagram below and repeat the same process for the other side of the pillow.

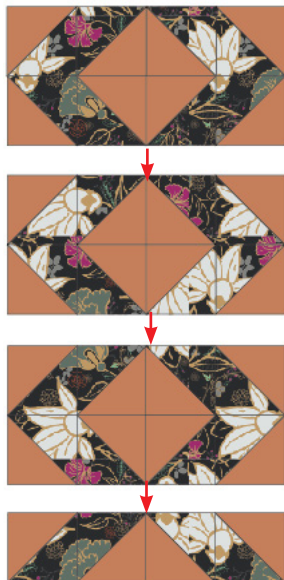


DIAGRAM 5



- Now, take an $2\frac{1}{4}$ x $14\frac{1}{2}$ " strip from fabrics C and pair it, wrong sides together with an $1\frac{1}{2}$ x $14\frac{1}{2}$ " strip from fabrics D
- Now take an 1 x $14\frac{1}{2}$ " strip from Fabric C and pair it, wrong sides together with an $1\frac{1}{2}$ x $14\frac{1}{2}$ " strip from fabrics D
- Take another $2\frac{1}{4}$ x $14\frac{1}{2}$ " strip from fabrics C and pair it, wrong sides together.



DIAGRAM 6

ASSEMBLING THE TOP

- Take one of the zig zag pieces and pair it, wrong sides together with the strip piece.
- Take the other zig zag piece and pair it, wrong sides together.
- Now, having the $\frac{1}{4}$ " seams facing up, you will start fraying the seams so you can create the fringe effect



DIAGRAM 7

CREATING THE BACK PILLOW

*Sew all rights sides together with 1/4" seam allowance.
Press open.*

- To make a envelope back for your pillow take both 15' x 18' rectangles and fold one 18' side on each rectangle in 1/2' and press and then fold another 1/2' and press.
- Top stitch as close to the edge as possible.
- Place rectangles right side together on top of each other to the front of your pillow and stitch all the way around your pillow at 1/4' seam allowance.
- Clip corners at seam allowance and flip piece to the right side of the fabric.
- Fill pillow with a 22' x 14' pillow form and enjoy!



FEEL THE DIFFERENCE

artgalleryfabrics.com

NOTE: While all possible care has been taken to ensure the accuracy of this pattern, We are not responsible for printing errors or the way in which individual work varies. Please read instructions carefully before starting the construction of this quilt. If desired, wash and iron your fabrics before starting to cut.

© 2017 Courtesy of Art Gallery Quilts LLC. All Rights Reserved.