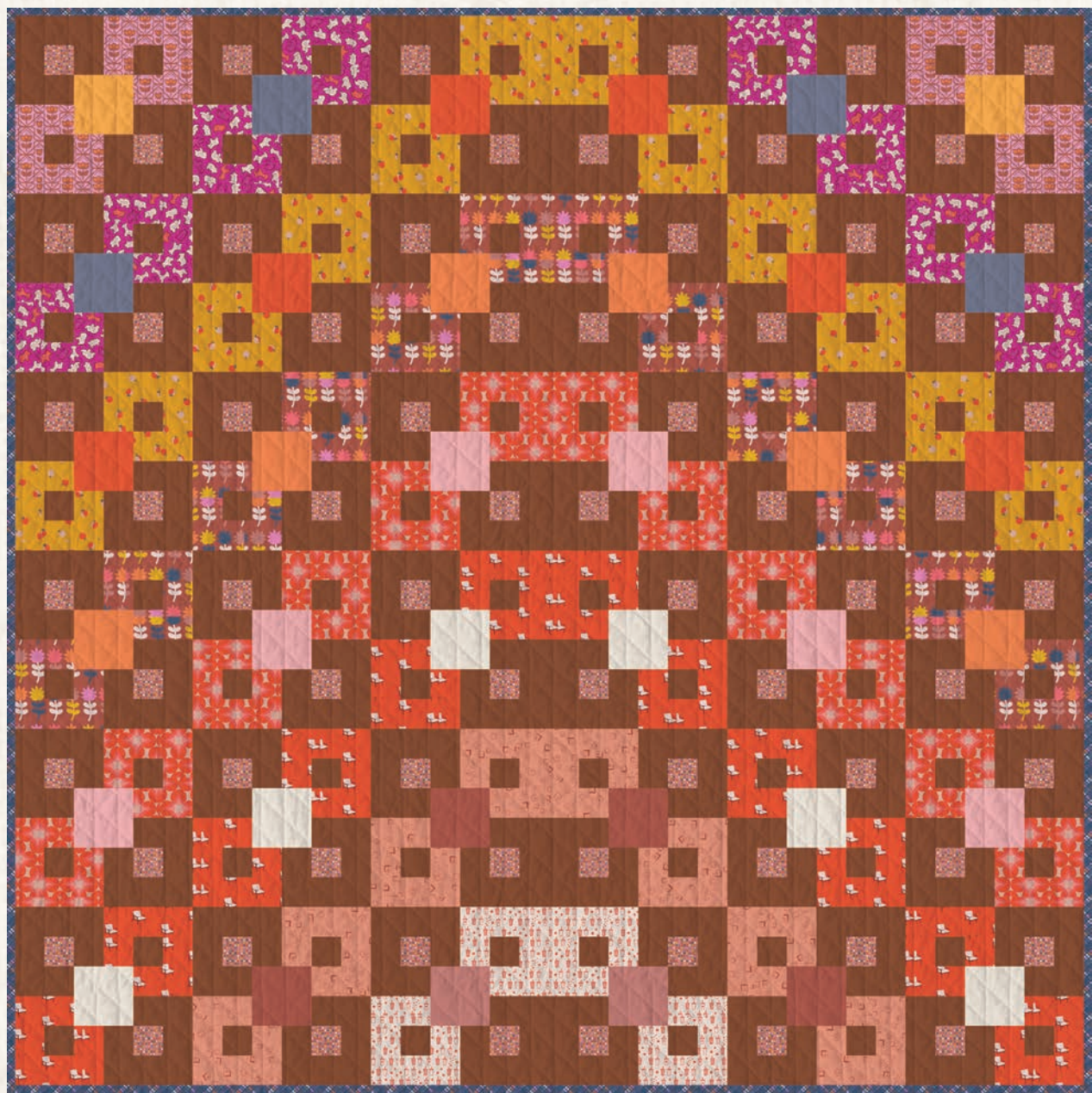
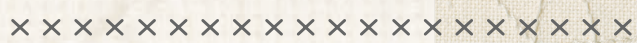




Sugar & Spice



FREE PATTERN

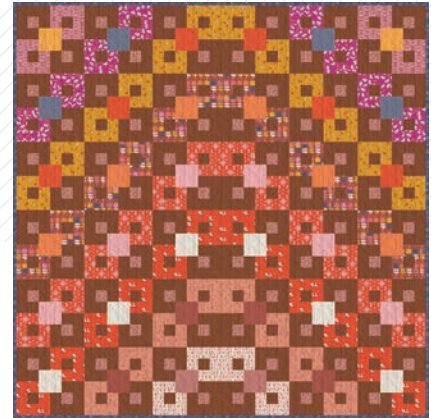


Sugar & Spice

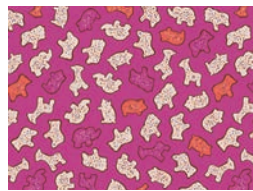
QUILT DESIGNED BY *AGFstudio*

cinnamon toast

FABRICS DESIGNED BY DANA WILLARD



Fabric A
CMT-62901
MOD WALL



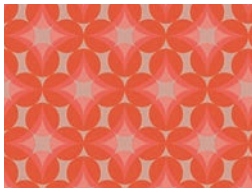
Fabric B
CMT-62900
CIRCUS ANIMALS



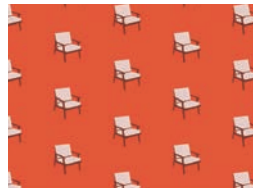
Fabric C
CMT-62908
PEACH COBBLER



Fabric D
CMT-62907
MINI DUTCH BLOOM
CINNAMON



Fabric E
CMT-62903
GLASS GRAPES



Fabric F
CMT-62902
DECK TALKS



Fabric G
CMT-62905
CINNAMON TOAST



Fabric H
CMT-62904
SODA POPINSKI



Fabric I
PE-449
MANDARIN



Fabric J
PE-441
BLUE BERRY ZEST



Fabric K
PE-461
TIGERLILY



Fabric L
PE-539
MARMALADE





FINISHED SIZE | 72½" x 72½"

FABRIC REQUIREMENTS

Fabric A	CMT-62901	¼ yd.
Fabric B	CMT-62900	¾ yd.
Fabric C	CMT-62908	¾ yd.
Fabric D	CMT-62907	¾ yd.
Fabric E	CMT-62903	¾ yd.
Fabric F	CMT-62902	¾ yd.
Fabric G	CMT-62905	¾ yd.
Fabric H	CMT-62904	¼ yd.
Fabric I	PE-449	⅛ yd.
Fabric J	PE-441	⅛ yd.
Fabric K	PE-461	¼ yd.
Fabric L	PE-539	¼ yd.
Fabric M	PE-411	¼ yd.
Fabric N	PE-436	¼ yd.
Fabric O	PE-508	⅛ yd.
Fabric P	PE-426	⅛ yd.
Fabric Q	CMT-62906	¾ yd.
Fabric R	PE-422	2½ yd.
Fabric S	CMT-62910	⅝ yd.

BACKING FABRIC
CMT-62909 4¾ yds (Suggested)

BINDING FABRIC
Fabric **S** CMT-62910 ⅝ yd. (Included)

CUTTING DIRECTIONS

¼" seam allowances are included.
WOF means width of fabric.

Fabric A

- Cut 3 (three) 2½" x WOF strips, then:
 - Sub-cut 4 (four) 2½" x 6½" rectangles.
 - 4 (four) 2½" x 4½" rectangles,
 - 8 (eight) 2½" squares.

Fabric B

- Cut 4 (four) 2½" x WOF strips, then:
 - Sub-cut 8 (eight) 2½" x 6½" rectangles,
 - 8 (eight) 2½" x 4½" rectangles,
 - 16 (sixteen) 2½" squares.

Fabric C

- Cut 5 (five) 2½" x WOF strips, then
 - Sub-cut 12 (twelve) 2½" x 6½" rectangles,
 - 12 (twelve) 2½" x 4½" rectangles,
 - 24 (twenty four) 2½" squares.

Fabric D

- Cut 5 (five) 2½" x WOF strips, then
 - Sub-cut 12 (twelve) 2½" x 6½" rectangles,
 - 12 (twelve) 2½" x 4½" rectangles,
 - 24 (twenty four) 2½" squares.

Fabric E

- Cut 5 (five) 2½" x WOF strips, then
 - Sub-cut 12 (twelve) 2½" x 6½" rectangles,
 - 12 (twelve) 2½" x 4½" rectangles,
 - 24 (twenty four) 2½" squares.

Fabric F

- Cut 5 (five) 2½" x WOF strips, then
 - Sub-cut 12 (twelve) 2½" x 6½" rectangles,
 - 12 (twelve) 2½" x 4½" rectangles,
 - 24 (twenty four) 2½" squares.

