

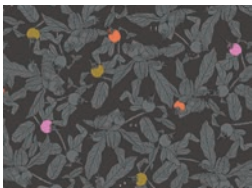
HALLOWEEN MASKS

ENSHADOW EDITION

QUILT DESIGNED BY AGFstudio

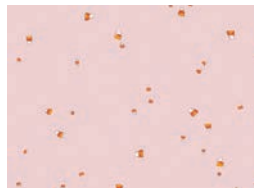


FABRICS DESIGNED BY KATARINA ROCCELLA



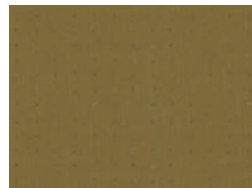
Fabric A

ENW-49414
PEEK-A-BOO



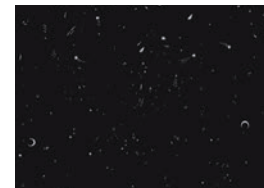
Fabric B

ENW-49410
SWEET HEX



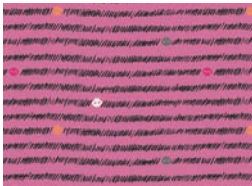
Fabric C

SDL-20113
SEEDS OLIVE



Fabric D

ENW-49405
IN THE DARK PHANTOM



Fabric E

ENW-49409
GRAVEWHIRL



Fabric F

ENW-49407
GOURD PARADE



Fabric G

ENW-49402
SHADOWMERE AMBER



Fabric H

ENW-49401
WITCHBONE CIDER





ENSHADOW EDITION

FINISHED SIZE | 10" X 6"

FABRIC REQUIREMENTS

Fabric A	ENW-49414	1/3 yd.
Fabric B	ENW-49410	1/3 yd.
Fabric C	SDL-20113	1 1/4 yd.
Fabric D	ENW-49405	1 1/8 yd.
Fabric E	ENW-49409	1 3/4 yd.
Fabric F	ENW-49407	1/4 yd.
Fabric G	ENW-49402	3/8 yd.
Fabric H	ENW-49401	1/4 yd.

ADDITIONAL MATERIALS

Felt 1/2 yd OR 3 (three) 8 1/2" x 11" sheets.

Steam-a-Seam 7/8 yd.

CUTTING DIRECTIONS

1/4" seam allowances are included.
WOF means width of fabric.

Fabric A

- Cut 1 (one) 2 1/2" x WOF strip.
-Subcut 12 (two) 2 1/2" x 20" strips.
- Cut 1 (one) Template 2.

Fabric B

- Cut 1 (one) Template 3.
- Cut 1 (one) Template 4.

Fabric C

- Cut 2 (two) Templates 5.
- Cut 1 (one) Template 13.

Fabric D

- Cut 2 (two) Templates 6.
- Cut 2 (two) Templates 10.
- Cut 2 (two) Templates 18.

Fabric E

- Cut 1 (one) Template 13.

Fabric F

- Cut 1 (one) 2 1/2" x WOF strip.
-Subcut 12 (two) 2 1/2" x 20" strips.
- Cut 1 (one) Template 9.

Fabric G

- Cut 1 (one) 2 1/2" x WOF strip.
-Subcut 12 (two) 2 1/2" x 20" strips.
- Cut 1 (one) Template 12.

Fabric H

- Cut 1 (one) Template 14.
- Cut 1 (one) Template 15.
- Cut 1 (one) Template 16.
- Cut 1 (one) Template 17.

Felt

- Cut 1 (one) Templates 1, 7, 11.

Steam-a-Seam

- Cut 1 (one) Templates 2, 3, 4, 8, 9, 12, 13, 14, 15, 16, and 17.
- Cut 2 (two) Templates 5, 6, 10, and 18.

CONSTRUCTION

Sew all rights sides together with ¼" seam allowance.

- Fuse Steam-a-Seam Templates to the wrong side of each of their respective Templates.

Tie Construction:

- Turn one end of 1 (one) 2½" x 20" strip from Fabric **A** towards the wrong side by ½" and press.



DIAGRAM 1

- Fold strip in half lengthwise and press. Unfold.



DIAGRAM 2

- Fold each edge to match the middle crease and press.



DIAGRAM 3

- Refold along the middle crease and re-press.
- Top stitch around the sides, starting and ending on the unfinished end.
- Repeat Tie Construction steps with remaining 2½" x 20" strips from Fabrics **A**, **F**, and **G**.



DIAGRAM 4

- Baste the unfinished end of 1 (one) Fabric **A** to the backside of 1 (one) Template 2 from Fabric **A** at the "Tie Placement" marking, as shown below.
- Repeat with the remaining Fabric **A** tie on the other "Tie Placement" marking.



DIAGRAM 5

- Repeat step, basting Fabric **F** ties to 1 (one) Template 8 from Fabric **E** and Fabric **G** ties to 1 (one) Template 12 from Fabric **G**.

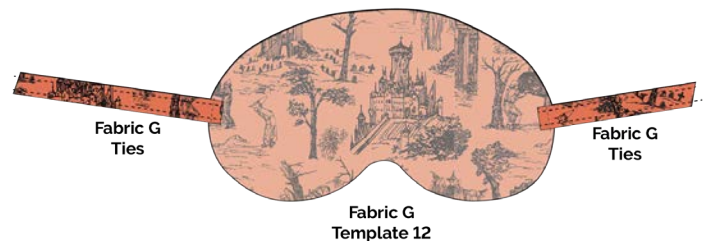
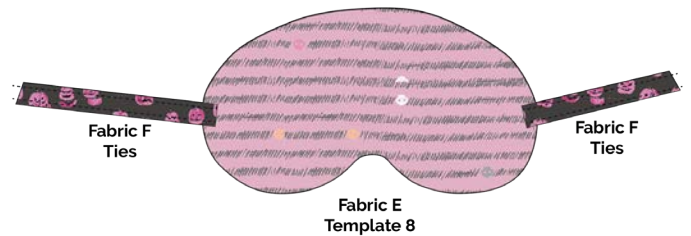
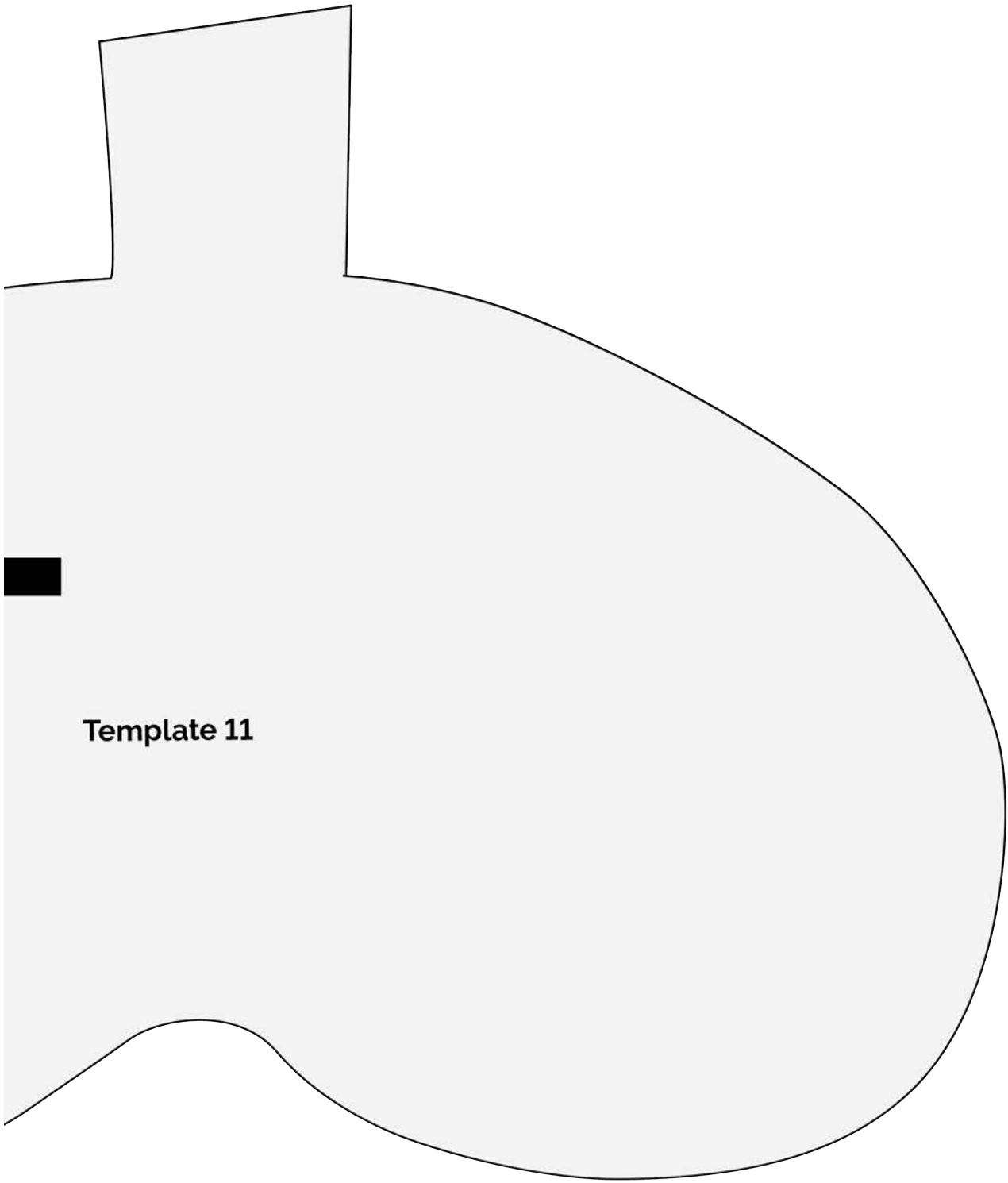


DIAGRAM 6



Template 11

