



# Flower Thoughts

PIN CUSHIONS - PARADISE GARDEN EDITION

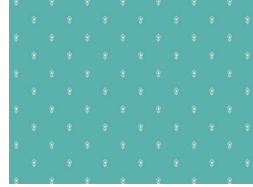
QUILT DESIGNED BY *AGFstudio*

## Paradise GARDEN

FABRICS DESIGNED BY AGF STUDIO



**Fabric A**  
PGN-48508  
BLOSSOM BAZAAR



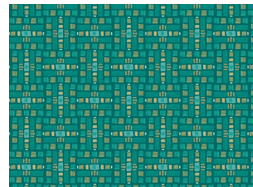
**Fabric B**  
PGN-48510  
ROYAL PLUMAGE



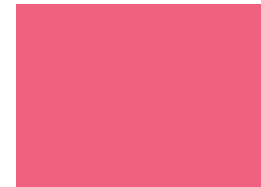
**Fabric C**  
PE-526  
SECRET LAGOON



**Fabric A**  
PGN-48500  
PEACOCK'S WALTZ



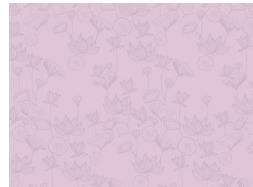
**Fabric B**  
PGN-48511  
BOTANIC JEWEL



**Fabric C**  
PE-536  
CACTUS FLOWER



**Fabric A**  
PGN- 48504  
EDEN LUSH



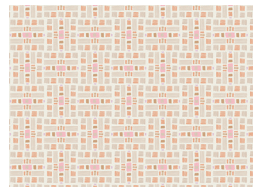
**Fabric B**  
PGN-48507  
PETAL CHANT



**Fabric C**  
PE-439  
RASPBERRY ROSE



**Fabric A**  
PGN- 48502  
FLORAL RHAPSODY



**Fabric B**  
PGN-48505  
JASMINE JEWEL



**Fabric C**  
PE-450  
GRAPEFRUIT

# Flower Thoughts

PIN CUSHIONS - PARADISE GARDEN EDITION

FINISHED SIZE | 3½" x 3½"

*A fat eight width of fabric (WOF) is typically 11"-wide.*

## FABRIC REQUIREMENTS

### Pin Cushion 1

Fabric A	PGN-48508	F8.
Fabric B	PGN-48510	F8.
Fabric C	PE-526	F8.

### Pin Cushion 2

Fabric A	PGN-48500	F8.
Fabric B	PGN-48511	F8.
Fabric C	PE-536	F8.

### Pin Cushion 3

Fabric A	PGN-48504	F8.
Fabric B	PGN-48507	F8.
Fabric C	PE-439	F8.

### Pin Cushion 4

Fabric A	PGN-48502	F8.
Fabric B	PGN-48505	F8.
Fabric C	PE-450	F8.

### ADDITIONAL MATERIALS

- Steam-a-Seam (12"-wide)      ⅛ yd.
- 4 (four) 2½" lengths of cording
- Stuffing

## CUTTING DIRECTIONS

¼" seam allowances are included.  
WOF means width of fabric.

### Fabric A

- Cut 1 (one) 4" x WOF strip. *(This cutting instruction is based on an 11" WOF)*
- Subcut 2 (two) 4" squares.

### Fabric B

- Cut 4 (four) Template 1.

### Fabric C

- Cut 1 (one) Template 2.

### Steam-a-Seam

- Cut 12 (twelve) Template 1.
- Cut 4 (four) Template 2.

## CONSTRUCTION

*Sew all rights sides together with ¼" seam allowance.*

- Fuse the Steam-a-Seam to the wrong side of all corresponding Template 1 and Template 2 pieces.

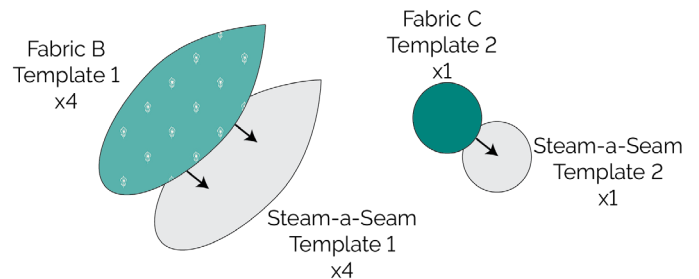


DIAGRAM 1





