

Grow your Own

PILLOWS - SUMMER
HOMESTEAD EDITION

QUILT DESIGNED BY *AGFstudio*

Summer Homestead

FABRICS DESIGNED BY
SEWCIAL BEE COLLECTIVE



Fabric A
SBC-BB-3002
BUMBLE & BLOOM HONEY



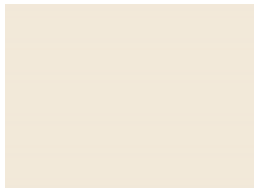
Fabric B
SBC-SH-2021
COUNTRYSIDE PLAID



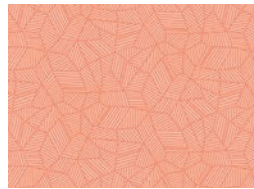
Fabric C
SBC-BB-3000
BUMBLE & BLOOM EARTHY



Fabric D
SBC-SH-2022
FLOWERCOMB



Fabric E
PE-540
COCONUT MILK



Fabric F
SBC-SH-2023
BOUNTIFUL FIELDS



Fabric G
PE-516
GARDEN FERN



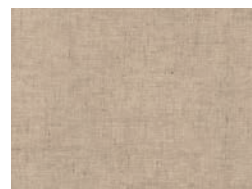
Fabric H
PE-442
OCEAN WAVES



Fabric I
PE-457
DRIED CARROT



Fabric J
PE-444
PEACH SHERBET



Fabric K
DEN-L-4000
SOFT SAND



FINISHED SIZE | 23½" x 23½"
15" x 15"

FABRIC REQUIREMENTS

Fabric A	SBC-BB-3002	FQ.
Fabric B	SBC-SH-2021	FQ.
Fabric C	SBC-BB-3000	FQ.
Fabric D	SBC-SH-2022	1 yd.
Fabric E	PE-540	⅝ yd.
Fabric F	SBC-SH-2023	F8.
Fabric G	PE-516	F8.
Fabric H	PE-442	F8.
Fabric I	PE-457	F8.
Fabric J	PE-444	F8.
Fabric K	DEN-L-4000	⅝ yd.

EXTRA MATERIALS

Steam-a-Seam ⅝ yd.

CUTTING DIRECTIONS

Please ensure that all fabrics are ironed thoroughly before cutting them. ¼" seam allowances are included. WOF means width of the fabric.

Fabric A

- Cut 1 (one) 6" x WOF strip.
 - Subcut 1 (one) 6" x 15½" strip.
- Cut 1 (one) 2" x WOF strip.
 - Subcut 1 (one) 2" x 8" strip.
- Cut 1 (one) Template 2a.
- Cut 1 (one) Template 2b.

Fabric B

- Cut 1 (one) 2" x WOF strip.
 - Subcut 1 (one) 2" x 8" strip.
 - Subcut 1 (one) 2" x 6" strip.
 - Subcut 1 (one) 2" x 5" strip.
- Cut 1 (one) 6" x WOF strip.
 - Subcut 1 (one) 6" x 18" strip.

Fabric C

- Cut 2 (two) 2" x WOF strips.
 - Subcut 1 (one) 2" x 8" strip.
 - Subcut 2 (two) 2" x 6" strips.
 - Subcut 2 (two) 2" x 5" strips.
- Cut 1 (one) 6" x WOF strip.
 - Subcut 1 (one) 6" x 20½" strip.

Fabric D

- Cut 1 (one) 24" x WOF strip.
 - Subcut 2 (two) 24" x 17" rectangles.
 - Subcut 3 (three) 2" x 6" strips.
 - Subcut 3 (three) 2" x 5" strips.
- Cut 1 (one) 6" x WOF strip.
 - Subcut 1 (one) 6" x 23" strip.
 - Subcut 1 (one) 2" x 8" strip.

Fabric E

- Cut 4 (four) 1½" x WOF strips.
 - Subcut 2 (two) 1½" x 24" strips.
 - Subcut 2 (two) 1½" x 10½" strips.
 - Subcut 2 (two) 1½" x 4" strips.
 - Subcut 2 (two) 1½" x 2" strips.
 - Subcut 10 (ten) 1½" x 6" strips.
 - Subcut 4 (four) 1½" x 5" strips.

