

FACETED

BOHEMIA EDITION

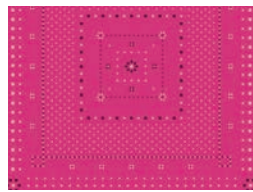
QUILT DESIGNED BY *AGFstudio*

THE CUR8TOR *Bohemia*

FABRICS DESIGNED BY AGF STUDIO



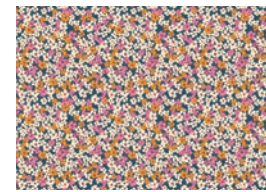
Fabric A
Backing
CUR8BH100
ACQUA DI ROSE MYSTIC



Fabric B
CUR8BH101
HANDKERCHIEF FUCHSIA



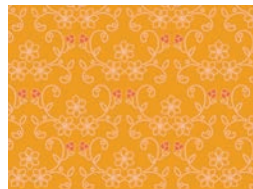
Fabric C
Binding
CUR8BH102
GRACEFUL BLOOMS



Fabric D
CUR8BH103
RETRO PRAIRIE MIRAGE



Fabric E
CUR8BH104
BOHEMIAN ENIGMA



Fabric F
CUR8BH105
BOHO STITCHES AMBER



Fabric G
CUR8BH106
MOON FOREST ECHOES



Fabric H
CUR8BH107
PARAKEET PARADISE



FACETED

BOHEMIA EDITION

FINISHED SIZE | 58" x 69½"

FABRIC REQUIREMENTS

Fabric A	CUR8BH100	¾ yd.
Fabric B	CUR8BH101	¾ yd.
Fabric C	CUR8BH102	7⁄8 yd.
Fabric D	CUR8BH103	¾ yd.
Fabric E	CUR8BH104	¾ yd.
Fabric F	CUR8BH105	2¾ yd.
Fabric G	CUR8BH106	¾ yd.
Fabric H	CUR8BH107	5⁄8 yd.

BACKING FABRIC

CUR8BH100 4½ yds (*Suggested*)

BINDING FABRIC

Fabric **C** CUR8BH102 (*Included*)

CUTTING DIRECTIONS

¼" seam allowances are included.
WOF means width of fabric.

Fabric A

- Cut (1) 10" x WOF strips, then:
 - Sub-cut into (4) 10" squares.

Fabric B

- Cut (1) 10" x WOF strips, then:
 - Sub-cut into (4) 10" squares.

Fabric C

- Cut (1) 10" x WOF strips, then:
 - Sub-cut into (4) 10" squares.
- Cut (7) 2½" x WOF strips. (BINDING)

Fabric D

Cut (1) 10" x WOF strips, then:

- Sub-cut into (4) 10" squares.

Fabric E

Cut (1) 10" x WOF strips, then:

- Sub-cut into (4) 10" squares.

Fabric F

Cut (8) 10" x WOF strips, then:

- Sub-cut into (30) 10" squares.

Fabric G

Cut (1) 10" x WOF strips, then:

- Sub-cut into (4) 10" squares.

Fabric H

- Cut (2) 10" x WOF strips, then:
 - Sub-cut into (6) 10" squares.

CONSTRUCTION

Sew all rights sides together with 1/4" seam allowance.

- Align (1) 10" square from fabrics **A** and **F** face to face.
- Join both squares by stitching at a SCANT 1/4" from the right and left edges.
- Now, cut on the diagonal follow diagram 1 for reference.

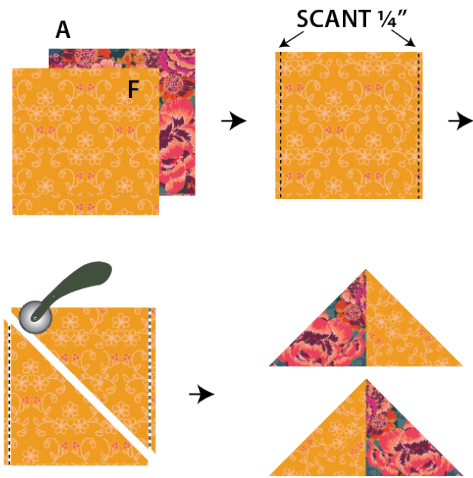


DIAGRAM 1

- You will get two (2) triangles.
- Open them and press the seam towards the dark color and join the two triangles making a big hourglass block.

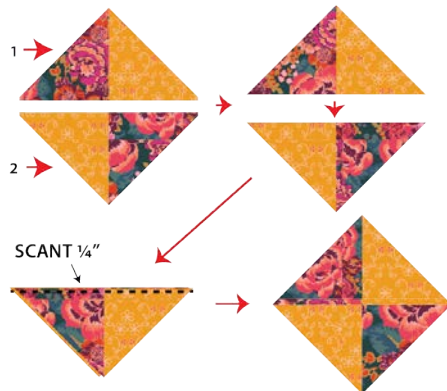


DIAGRAM 2

- Trim the four edges of the block so it measures 13" on each side.



DIAGRAM 3

- Measure 3" from top down and cut at this point.
- Measure 3" from bottom up and cut at this point.
- Measure 3" from right to left and cut at this point.
- Measure 3" from left to right and cut at this point.

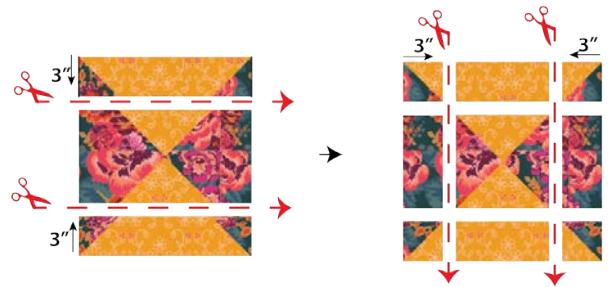


DIAGRAM 4

- Turn the 7" hourglass square 90 degrees, so fabric **F** of the hourglass is next to rectangle from fabric **F** as well.
- Turn the four (4) 3" half square triangle in the corners 180 degrees, so the fabric **F** is next to fabric **A**
- See diagram 5 for reference.

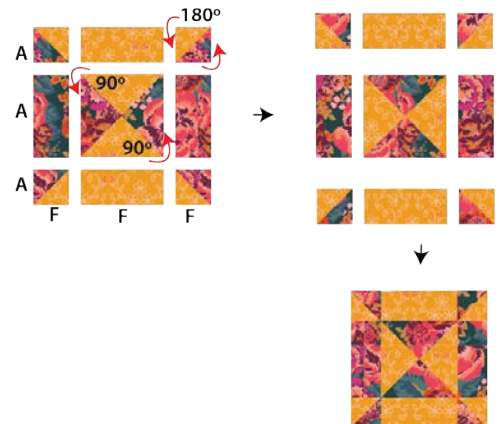


DIAGRAM 5

BINDING

Sew rights sides together.

- Cut enough strips $2\frac{1}{2}$ " wide by the width of the fabric **C** to make a final strip 265" long. Start sewing the binding strip in the middle of one of the sides of the quilt, placing the strip right side down and leaving an approximated 5" tail. Sew with $\frac{1}{4}$ " seam allowance (using straight stitch), aligning the strip's raw edge with the quilt top's raw edge.
- Stop stitching $\frac{1}{4}$ " before the edge of the quilt (DIAGRAM B 1). Clip the threads. Remove the quilt from under the machine presser foot. Fold the strip in a motion of 45° and upward, pressing with your fingers (DIAGRAM B 2). Hold this fold with your finger, bring the strip down in line with the next edge, making a horizontal fold that aligns with the top edge of the quilt (DIAGRAM B 3). Start sewing at $\frac{1}{4}$ " of the border, stitching all the layers. Do the same in the four corners of the quilt.
- Stop stitching before you reach the last 5 or 6 inches. Cut the threads and remove the quilt from under the machine presser foot. Lay the loose ends of the binding flat along the quilt edge, folding the ends back on themselves where they meet. Press them together to form a crease. Using this crease as the stitching line, sew the two open ends of the binding with right sides together (you can help yourself marking with a pencil if the crease is difficult to see).
- Trim seam to $\frac{1}{4}$ " and press open. Complete the sewing. Turn binding to back of the quilt, turn raw edge inside and stitch by hand using blind stitch.
- If you are using our 2.5 edition (binding fabric), click or scan this QR code to see a tutorial on how to use this specialty fabric.

