

X
X
X
X
X
X
X
X
X
X
X
X

HIGHLANDS EDITION



XXXXXXXXXXXXXXXXXXXXXXXXXXXXXXXXXXXX



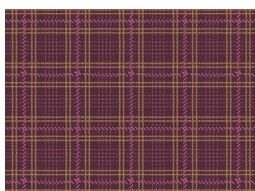
Morning GLORY

HIGHLANDS EDITION

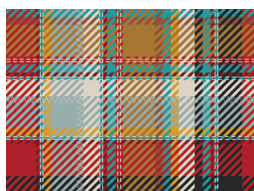
QUILT DESIGNED BY AGFstudio

HIGHLANDS

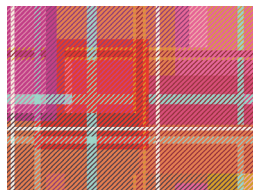
FABRICS DESIGNED BY AGF STUDIO



Fabric A
F-12804
CROSSHATCH PLAID MERLOT



Fabric B
F-22803
ROYAL PLAID BERRY PIE



Fabric C
F-42800
MEADOW PLAID
FLOWERBED



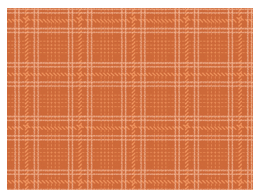
Fabric D
F-22804
CHEVRON PLAID
CRANBERRY



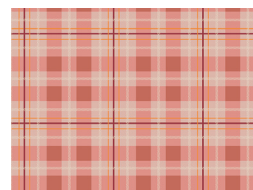
Fabric E
F-22802
ROYAL PLAID SUNRISE



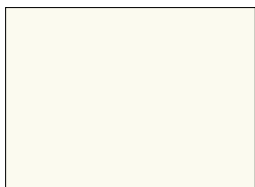
Fabric F
F-12800
CHECK PLAID OLIVE JAM



Fabric G
F-12803
CROSSHATCH PLAID SPICE



Fabric H
F-12802
CHECK PLAID PRIMROSE



Fabric I
FS-204
WHITE LINEN



Fabric J (Binding)
F-22805
CHEVRON PLAID TOFFEE



Backing
FS-203
PINK CLAY



HIGHLANDS EDITION
FINISHED SIZE | 64½" x 64½"

FABRIC REQUIREMENTS

| | | |
|-----------------|---------|---------|
| Fabric A | F-12804 | ⅝ yd. |
| Fabric B | F-22803 | ⅝ yd. |
| Fabric C | F-42800 | ⅝ yd. |
| Fabric D | F-22804 | ⅝ yd. |
| Fabric E | F-22802 | ⅝ yd. |
| Fabric F | F-12800 | ⅝ yd. |
| Fabric G | F-12803 | ⅝ yd. |
| Fabric H | F-12802 | ⅝ yd. |
| Fabric I | FS-204 | 3 ½ yd. |
| Fabric J | F-22805 | ⅝ yd. |

BINDING FABRIC

Fabric **J** F-22805 ⅝ yd. (Included)

BACKING FABRIC

FS-203 4 ⅙ yds. (Suggested)

CUTTING DIRECTIONS

Fabric A-H

- Cut 3 (three) 6" x WOF strips.
- Sub-cut 16 (sixteen) 6" squares.

Fabric I

- Cut 19 (nineteen) 6" x WOF strips.
- Sub-cut 128 (one hundred and twenty-eight) 6" squares.

Fabric J

- Cut seven (7) WOF x 2½" strips (Binding).

CONSTRUCTION

Please ensure that all fabrics are ironed thoroughly before cutting them. ¼" seam allowances are included. WOF means width of the fabric.

Magic Eight Assembly:

- Place 1 (one) 6" Fabric **I** square on 1 (one) 6" Fabric **A** square.
- Draw a line across both diagonals.

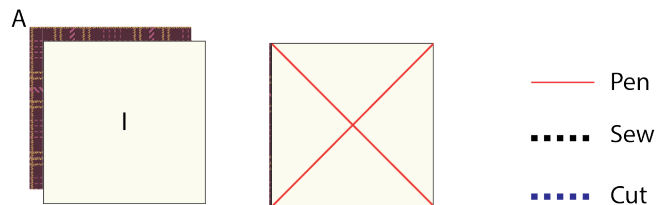


DIAGRAM 1

- Sew a *scant* ¼" seam on each side of both diagonal lines. Press the sewn square to set the seams.
- Using a rotary cutter, and without lifting your fabric, cut on both marked diagonal lines, and across the middle vertically and horizontally, as shown in the diagram below.

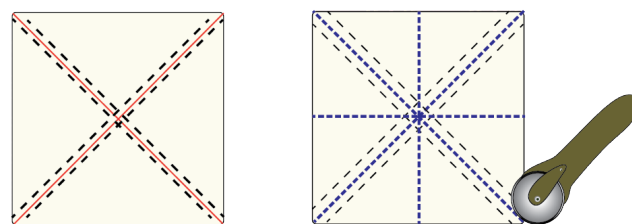
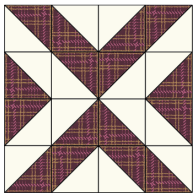
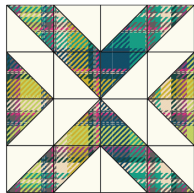


DIAGRAM 2

- Repeat steps for all HST units to create 8 (eight) blocks from each HST combination (as shown in the diagram below).



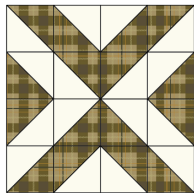
Fabric A
Block 1
x8



Fabric E
Block 5
x8



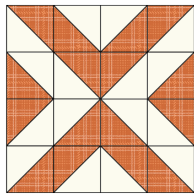
Fabric B
Block 2
x8



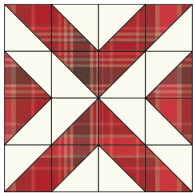
Fabric F
Block 6
x8



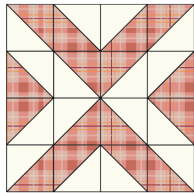
Fabric C
Block 3
x8



Fabric G
Block 7
x8



Fabric D
Block 4
x8



Fabric H
Block 8
x8

DIAGRAM 8

- Using the diagram below as a guide, assemble the rows.

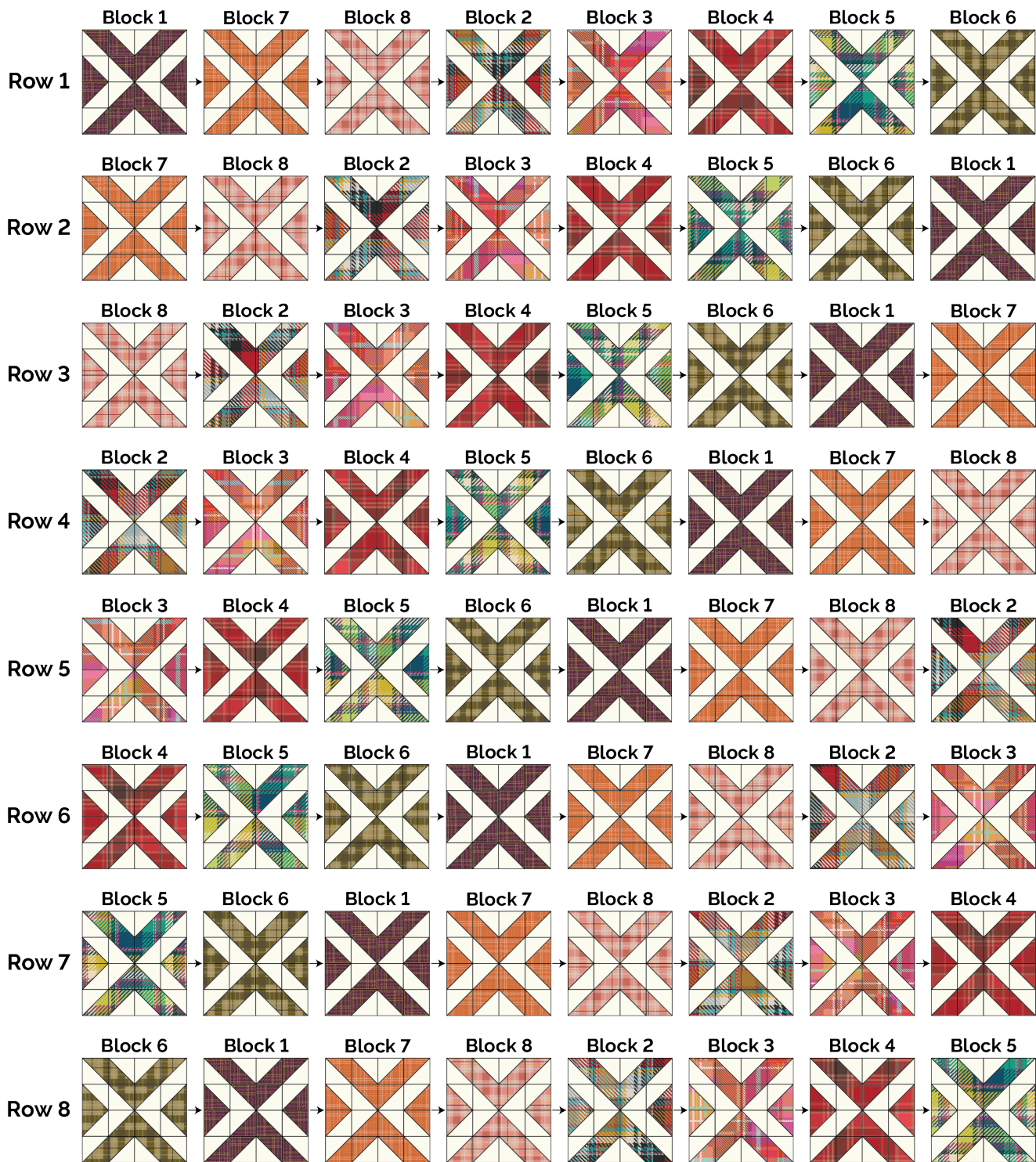
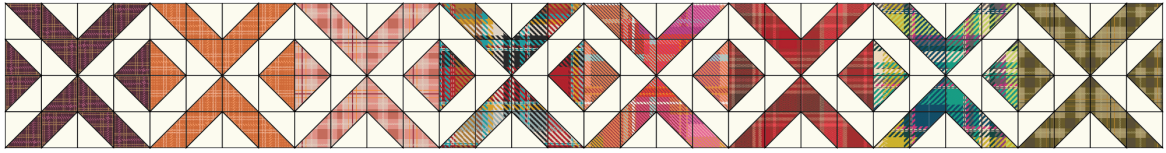


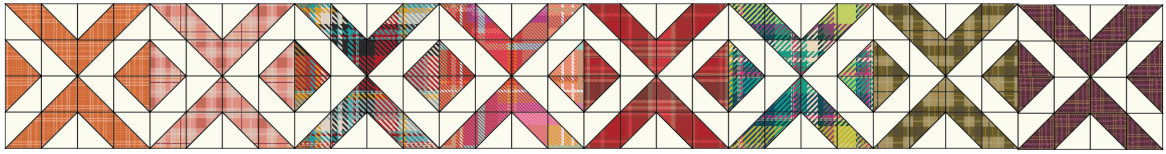
DIAGRAM 9

- Sew the rows together.

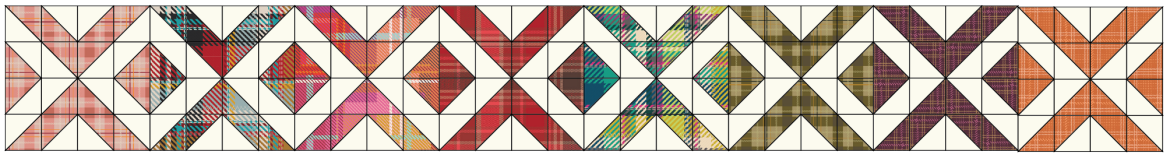
Row 1



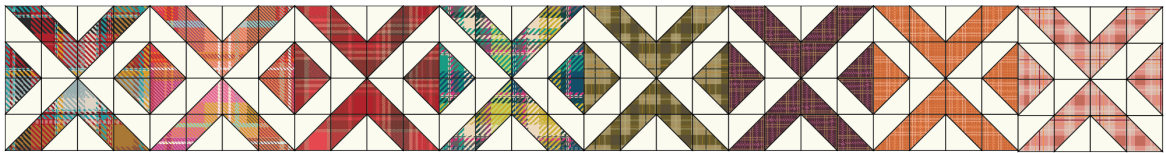
Row 2



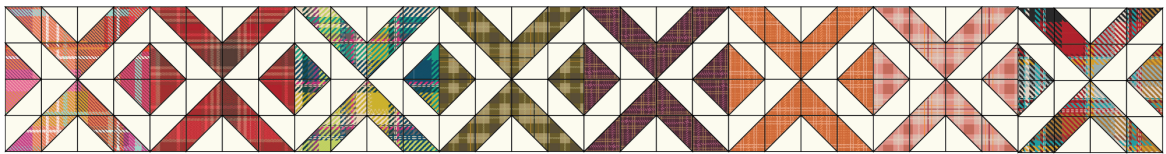
Row 3



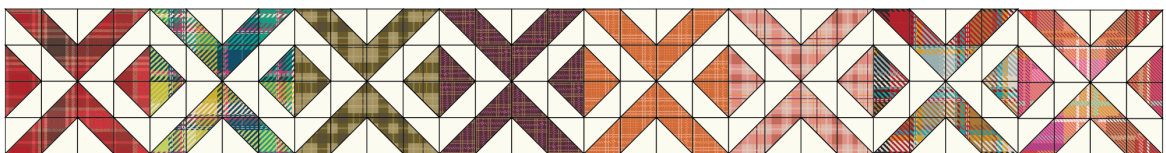
Row 4



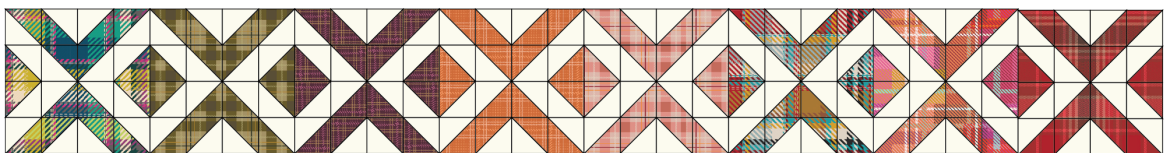
Row 5



Row 6



Row 7



Row 8

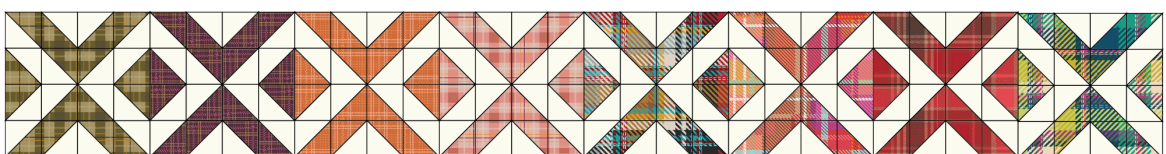


DIAGRAM 10

QUILT TOP

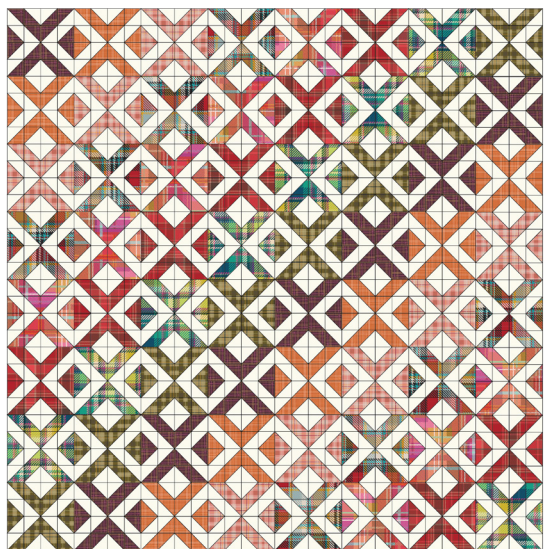


DIAGRAM 11

QUILT ASSEMBLY

Sew rights sides together.

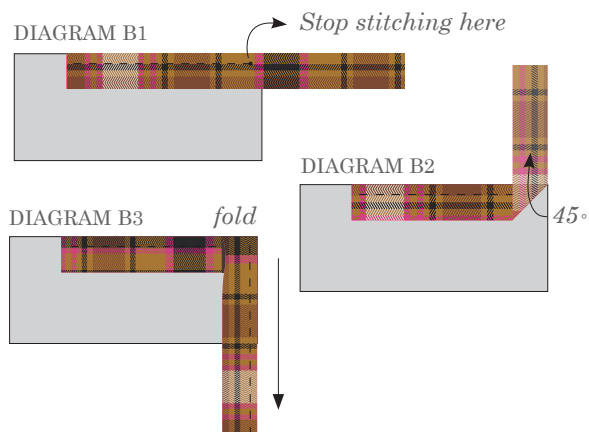
- Place BACKING FABRIC on a large surface wrong side up. Stretch it with masking tape against that surface.
- Place BATTING on top of backing fabric.
- Place TOP on top of the batting with right side facing up. Smooth away wrinkles using your hands.
- Pin all layers together and baste with basting thread, using long stitches. You can also use safety pins to join the layers.
- Machine or hand quilt starting at the center and working towards the corners. Remember that quilting motifs are a matter of personal preference. Have fun choosing yours!
- After you finished, trim excess of any fabric or batting, squaring the quilt to proceed to bind it.

BINDING

Sew rights sides together.

- Cut enough strips 2½" wide by the width of the fabric **J** to make a final strip 268" long. Start sewing the binding strip in the middle of one of the sides of the quilt, placing the strip right side down and leaving an approximated 5" tail. Sew with ¼" seam allowance (using straight stitch), aligning the strip's raw edge with the quilt top's raw edge.

- Stop stitching ¼" before the edge of the quilt (DIAGRAM B 1). Clip the threads. Remove the quilt from under the machine presser foot. Fold the strip in a motion of 45° and upward, pressing with your fingers (DIAGRAM B2). Hold this fold with your finger, bring the strip down in line with the next edge, making a horizontal fold that aligns with the top edge of the quilt (DIAGRAM B3). Start sewing at ¼" of the border, stitching all the layers. Do the same in the four corners of the quilt.
- Stop stitching before you reach the last 5 or 6 inches. Cut the threads and remove the quilt from under the machine presser foot. Lay the loose ends of the binding flat along the quilt edge, folding the ends back on themselves where they meet. Press them together to form a crease. Using this crease as the stitching line, sew the two open ends of the binding with right sides together (you can help yourself marking with a pencil if the crease is difficult to see).
- Trim seam to ¼" and press open. Complete the sewing. Turn binding to back of the quilt, turn raw edge inside and stitch by hand using blind stitch.
- If you are using our 2.5 edition (binding fabric), click or scan this QR code to see a tutorial on how to use this specialty fabric.



XXXXXXXXXXXXXXXXXXXXXXXXXXXXXXXXXXXX

*Congratulations
& enjoy*

XXXXXXXXXXXXXXXXXXXXXXXXXXXXXXXXXXXX



artgalleryfabrics.com

NOTE: While all possible care has been taken to ensure the accuracy of this pattern, We are not responsible for printing errors or the way in which individual work varies.

Please read instructions carefully before starting the construction of this quilt. If desired, wash and iron your fabrics before starting to cut.

© 2024 Courtesy of Art Gallery Quilts LLC. All Rights Reserved.