

XXXXXX

FAIRVIEW AVENUE EDITION



XXXXXXXXXXXXXXXXXXXXXXXXXXXX



Swing Basket

FAIRVIEW AVENUE EDITION

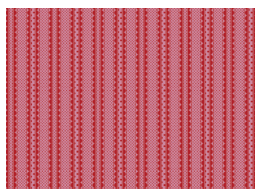
DESIGNED BY *AGFstudio*

FAIRVIEW Avenue

FABRICS DESIGNED BY BARI J



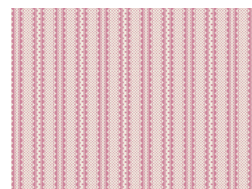
Fabric A
FWA-21702
MOM'S BLOSSOMS CHERRY



Fabric B
LEG-32107
LEGACY STRIPE ROUGE



Fabric C
FWA-21700
TIMELESS DREAM POPPY



Fabric D
LEG-32105
LEGACY STRIPE ROSE



Fabric E
DEN-L-4000
SOFT SAND





FAIRVIEW AVENUE EDITION

FINISHED SIZE | 11" x 10½"

*A fat eight width of fabric (WOF) is typically 11"-wide.
Cutting instructions are based on 11"-and 42"-wide fabrics.*

FABRIC REQUIREMENTS

Basket 1

Fabric **A** FWA-21702 ¾ yd.

Fabric **B** LEG-32107 ¾ yd.

Basket 2

Fabric **C** FWA-21700 ¾ yd.

Fabric **D** LEG-32105 ¾ yd.

Handles (Both Baskets)

Fabric **E** DEN-L-4000 F8.

EXTRA MATERIALS

Fusible Medium Weight Interfacing:

-2 (two) 11" x 25½" rectangles.

Batting:

-2 (two) 13" x 28" rectangles

1 (one) 12" round dowel rod.

Cord or twine.

CUTTING DIRECTIONS

*¼" seam allowances are included.
WOF means width of fabric.*

Fabric A

- Cut 1 (one) 13" x WOF strip.
- Sub-cut 1 (one) 13" x 28" rectangle.
- Sub-cut 1 (one) Template.

Fabric B

- Cut 1 (one) 11" x WOF strip.
- Sub-cut: 1 (one) 11" x 25½" rectangle.
- Sub-cut 1 (one) Template.

Fabric C

- Cut 1 (one) 13" x WOF strip.
- Sub-cut 1 (one) 13" x 28" rectangle.
- Sub-cut 1 (one) Template.

Fabric D

- Cut 1 (one) 11" x WOF strip.
- Sub-cut: 1 (one) 11" x 25½" rectangle.
- Sub-cut 1 (one) Template.

Fabric E

- Cut 2 (two) 6½" x WOF strips. (*This cutting instruction is based on an 11" WOF*)
- Sub-cut 4 (four) 6½" x 3" rectangles.

CONSTRUCTION

Sew all rights sides together with ¼" seam allowance.

- Quilt 1 (one) 13" x 28" rectangle from Fabric **A** to one of the batting rectangles. Trim to 11" x 25½".
- Fold the quilted rectangle in half along the long edges, as in the diagram below.



DIAGRAM 1

- Sew the 11" edge together to create a cylinder, as in the diagram below.

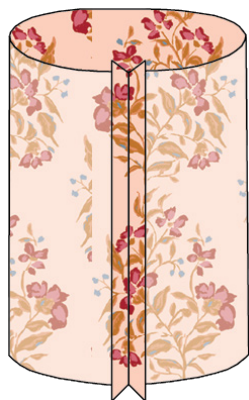


DIAGRAM 2

- With the right sides together, place the Template piece from Fabric A to the bottom of the cylinder, aligning the notch with the seam. Pin well.
- Sew together, and clip the curve, being careful not to clip the seam.

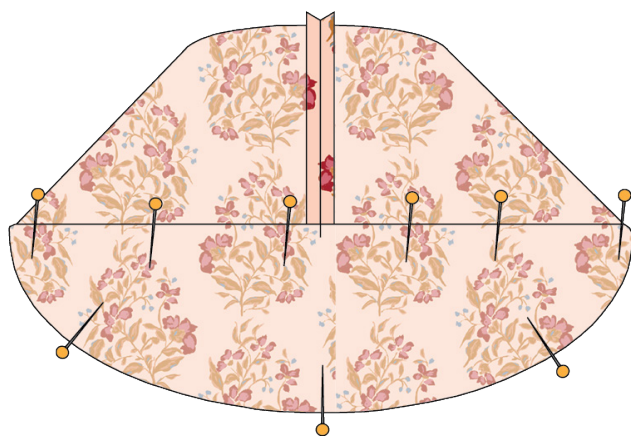


DIAGRAM 3

- Turn inside out and set aside. This is your basket exterior.
- Repeat steps using the pieces from Fabric C.

- Iron 1 (one) of the interfacing rectangles to the wrong side of 1 (one) 25½" x 11" rectangle from Fabric B, and iron 1 (one) of the interfacing Template pieces to the wrong side of the Fabric B Template piece.
- Using the interfaced rectangle and Template piece, follow the instructions given for the basket exterior, leaving a 3" opening in the bottom seam, for turning later. This is your basket lining.
- Repeat using pieces from Fabric D.

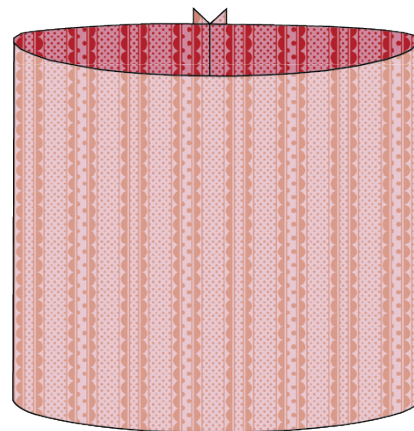


DIAGRAM 4

- Insert basket exterior from Fabric A, right side facing out, into the basket lining from Fabric B, wrong side facing out, as in the diagram below.
- Align seams, pin, and sew all the way around.

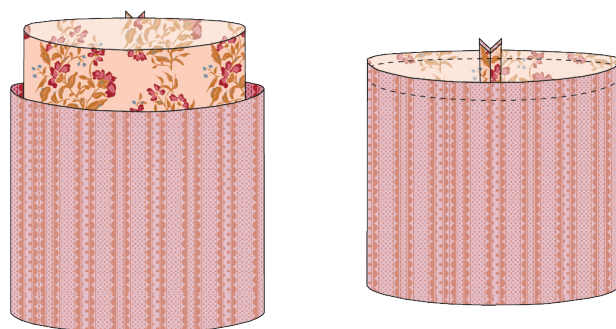


DIAGRAM 5

- Use the 3" opening in the lining to turn the basket right side out. Stitch to close the opening (by hand is recommended).

- Top stitch around the top of the basket, about $\frac{1}{8}$ " away from the edge.



DIAGRAM 6

- Repeat steps using Fabric **C** basket exterior and Fabric **D** basket lining.
- Fold 1 (one) $6\frac{1}{2}$ " x 3" rectangle from Fabric **E** in half lengthwise. Press to create a guideline.
- Unfold.

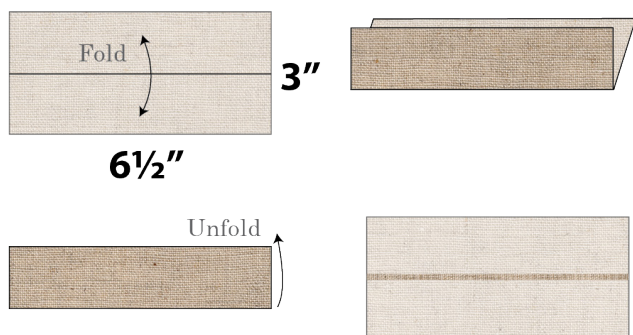


DIAGRAM 7

- Fold both edges to the pressed center guideline, as in the diagram below. Press.
- Fold in half along the same center line and press again.
- Top stitch along both long edges.
- Repeat with the remaining Fabric **E** rectangles.

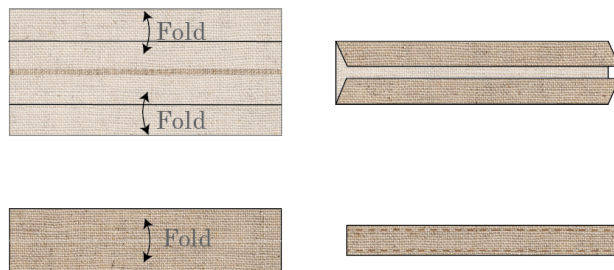


DIAGRAM 8

- Fold 2 (two) of the straps in half and align both edges to the top edge of one of the baskets on the flat side, as in the diagram below. Once placed as desired, pin.
- Sew the straps in place $\frac{1}{4}$ " away from the edge (Tip: for extra security, stitch back and forth over each strap before continuing.)

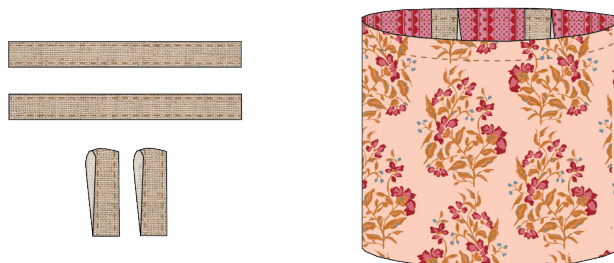


DIAGRAM 9

- Fold the straps towards the basket opening, as in the diagram below. Press and pin (or clip) in place.
- Top stitch across the straps to hold them in place.
- Repeat previous steps to attach straps to second basket.



DIAGRAM 10

- Insert 1 (one) dowel into the straps of the basket.
- Tie twine or cord to either end of the dowel and hang to desired length, repeat with second basket.



DIAGRAM 11



artgalleryfabrics.com

NOTE: While all possible care has been taken to ensure the accuracy of this pattern, We are not responsible for printing errors or the way in which individual work varies.

Please read instructions carefully before starting the construction of this quilt. If desired, wash and iron your fabrics before starting to cut.

1" Test
Square

Template