

Lily Pond



fabric
wonders
STRIP *Roll*
FRIENDLY

FREE PATTERN

XXXXXXXXXXXXXXXXXXXXXXXXXXXX



QUILT DESIGNED BY AGFstudio

stillwater

FABRICS DESIGNED BY KATIE O'SHEA



Fabric A
STW-36600
STILLWATER DAYBREAK



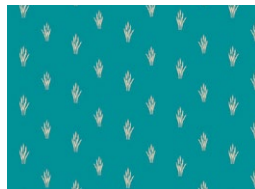
Fabric B (Backing)
STW-46605
LEEK BLOSSOM TWILIGHT



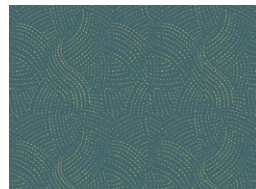
Fabric C
STW-36604
HIDDEN HARMONY
DAYBREAK



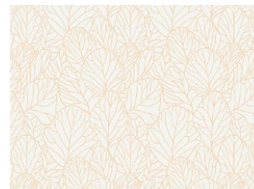
Fabric D
STW-36606
SWAN HAVEN DAYBREAK



Fabric E
STW-46609
CATTAIL BREEZE TWILIGHT



Fabric F
STW-46607
MEANDERING TWILIGHT



Fabric G
STW-36603
WILD CANOPY DAYBREAK



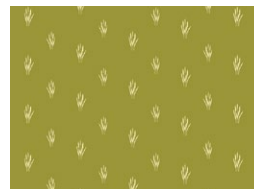
Fabric H
STW-46601
PETAL REFLECTIONS
TWILIGHT



Fabric I
STW-36602
BLOOMFALL DAYBREAK



Fabric J
STW-36608
EGRET DANCE DAYBREAK



Fabric K
STW-36609
CATTAIL BREEZE DAYBREAK



Fabric L
STW-36601
PETAL REFLECTIONS
DAYBREAK



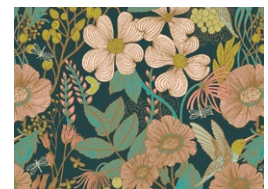
Fabric M
STW-46603
WILD CANOPY TWILIGHT



Fabric N
STW-46602
BLOOMFALL TWILIGHT

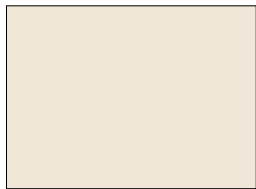


Fabric O
STW-46608
EGRET DANCE TWILIGHT

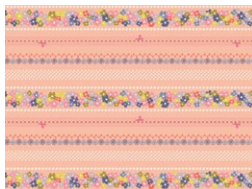


Fabric P
STW-46600
STILLWATER TWILIGHT





Fabric Q
PE-540
COCONUT MILK



Fabric R (Binding)
BIN-25104
FLORICULTURE BOUND BLUSH





FINISHED SIZE | 62½" x 62½"

FABRIC REQUIREMENTS

One set of Strip Roll is needed to complete this quilt top.

Fabric A	STW-36600	2 Strips.
Fabric B	STW-46605	2 Strips.
Fabric C	STW-36604	2 Strips.
Fabric D	STW-36606	3 Strips.
Fabric E	STW-46609	4 Strips.
Fabric F	STW-46607	3 Strips.
Fabric G	STW-36603	3 Strips.
Fabric H	STW-46601	2 Strips.
Fabric I	STW-36602	2 Strips.
Fabric J	STW-36608	2 Strips.
Fabric K	STW-36609	3 Strips.
Fabric L	STW-36601	2 Strips.
Fabric M	STW-46603	3 Strips.
Fabric N	STW-46602	2 Strips.
Fabric O	STW-46608	2 Strips.
Fabric P	STW-46600	2 Strips.

ADDITIONAL FABRICS

ADDITIONAL FABRIC

Fabric **O** STW46608 ¼ yd.

BACKGROUND FABRIC

Fabric **Q** PE-540 1 yd.

BACKING FABRIC

Fabric **B** STW-46605 4 yds (Suggested)

BINDING FABRIC

Fabric **R** BIN25104 ⅝ yd (Included)

CUTTING DIRECTIONS

Please ensure that all fabrics are ironed thoroughly before cutting them. ¼" seam allowances are included.

Fabric A:

- Cut 4 (four) 2½" x 6½" rectangles.
- Cut 8 (eight) 2½" x 4½" rectangles.
- Cut 5 (five) 2½" squares.

Fabric B:

- Cut 2 (two) 2½" x 10½" strips.
- Cut 4 (four) 2½" x 8½" strips.
- Cut 3 (three) 2½" x 6½" rectangles.
- Cut 1 (one) 2½" x 4½" rectangle.
- Cut 2 (two) 2½" square.

Fabric C:

- Cut 2 (two) 2½" x 10½" strips.
- Cut 4 (four) 2½" x 8½" strips.
- Cut 3 (three) 2½" x 6½" rectangles.
- Cut 1 (one) 2½" x 4½" rectangle.

Fabric D:

- Cut 4 (four) 2½" x 10½" strips.
- Cut 7 (seven) 2½" x 8½" strips.
- Cut 3 (three) 2½" x 6½" rectangles.

Fabric E:

- Cut 2 (two) 2½" x 14½" strips.
- Cut 5 (five) 2½" x 12½" strips.
- Cut 3 (three) 2½" x 10½" strips.
- Cut 2 (two) 2½" x 8½" rectangle.
- Cut 2 (two) 2½" x 6½" rectangle.
- Cut 2 (two) 2½" squares.

Fabric F

- Cut 2 (two) $2\frac{1}{2}$ " x $14\frac{1}{2}$ " strips.
- Cut 4 (four) $2\frac{1}{2}$ " x $12\frac{1}{2}$ " strips.
- Cut 2 (two) $2\frac{1}{2}$ " x $10\frac{1}{2}$ " strips.
- Cut 5 (five) $2\frac{1}{2}$ " squares.

Fabric G

- Cut 2 (two) $2\frac{1}{2}$ " x $14\frac{1}{2}$ " strips.
- Cut 4 (four) $2\frac{1}{2}$ " x $12\frac{1}{2}$ " strips.
- Cut 2 (two) $2\frac{1}{2}$ " x $10\frac{1}{2}$ " strips.
- Cut 2 (two) $2\frac{1}{2}$ " squares.

Fabric H

- Cut 1 (one) $2\frac{1}{2}$ " x $10\frac{1}{2}$ " strip.
- Cut 1 (one) $2\frac{1}{2}$ " x $8\frac{1}{2}$ " strip.
- Cut 3 (three) $2\frac{1}{2}$ " x $6\frac{1}{2}$ " rectangle.
- Cut 5 (five) $2\frac{1}{2}$ " x $4\frac{1}{2}$ " rectangles.
- Cut 2 (two) $2\frac{1}{2}$ " squares.

Fabric I

- Cut 2 (two) $2\frac{1}{2}$ " x $10\frac{1}{2}$ " strips.
- Cut 4 (four) $2\frac{1}{2}$ " x $8\frac{1}{2}$ " strips.
- Cut 2 (two) $2\frac{1}{2}$ " x $6\frac{1}{2}$ " rectangles.
- Cut 2 (two) $2\frac{1}{2}$ " squares.

Fabric J

- Cut 1 (one) $2\frac{1}{2}$ " x $10\frac{1}{2}$ " strip.
- Cut 1 (one) $2\frac{1}{2}$ " x $8\frac{1}{2}$ " strip.
- Cut 3 (three) $2\frac{1}{2}$ " x $6\frac{1}{2}$ " rectangles.
- Cut 5 (five) $2\frac{1}{2}$ " x $4\frac{1}{2}$ " rectangles.
- Cut 2 (two) $2\frac{1}{2}$ " squares.

Fabric K:

- Cut 2 (two) $2\frac{1}{2}$ " x $14\frac{1}{2}$ " strips.
- Cut 4 (four) $2\frac{1}{2}$ " x $12\frac{1}{2}$ " strips.
- Cut 2 (two) $2\frac{1}{2}$ " x $10\frac{1}{2}$ " strips.
- Cut 1 (one) $2\frac{1}{2}$ " x $8\frac{1}{2}$ " strip.
- Cut 1 (one) $2\frac{1}{2}$ " x $6\frac{1}{2}$ " rectangle.
- Cut 2 (two) $2\frac{1}{2}$ " squares.

Fabric L

- Cut 2 (two) $2\frac{1}{2}$ " x $10\frac{1}{2}$ " rectangle.
- Cut 4 (four) $2\frac{1}{2}$ " x $8\frac{1}{2}$ " strips.
- Cut 2 (two) $2\frac{1}{2}$ " x $6\frac{1}{2}$ " rectangle.

Fabric M

- Cut 2 (two) $2\frac{1}{2}$ " x $14\frac{1}{2}$ " strips.
- Cut 4 (four) $2\frac{1}{2}$ " x $12\frac{1}{2}$ " strips.
- Cut 2 (two) $2\frac{1}{2}$ " x $10\frac{1}{2}$ " strips.

Fabric N

- Cut 1 (one) $2\frac{1}{2}$ " x $12\frac{1}{2}$ " strip.
- Cut 1 (one) $2\frac{1}{2}$ " x $10\frac{1}{2}$ " strip.
- Cut 2 (two) $2\frac{1}{2}$ " x $6\frac{1}{2}$ " rectangles.
- Cut 4 (four) $2\frac{1}{2}$ " x $4\frac{1}{2}$ " rectangle.
- Cut 6 (six) $2\frac{1}{2}$ " squares.

Fabric O

- Cut 1 (one) $2\frac{1}{2}$ " x WOF strip, then;

From your 4 (four) total strips, sub-cut into:

- 2 (two) $2\frac{1}{2}$ " x $14\frac{1}{2}$ " strips.
- 6 (six) $2\frac{1}{2}$ " x $12\frac{1}{2}$ " strips.
- 4 (four) $2\frac{1}{2}$ " x $10\frac{1}{2}$ " strips.
- 4 (four) $2\frac{1}{2}$ " squares.

Fabric P

- Cut 2 (two) $2\frac{1}{2}$ " x $10\frac{1}{2}$ " strips.
- Cut 4 (four) $2\frac{1}{2}$ " x $8\frac{1}{2}$ " strips.
- Cut 2 (two) $2\frac{1}{2}$ " x $6\frac{1}{2}$ " rectangle.
- Cut 1 (one) $2\frac{1}{2}$ " square.
-

Fabric Q

- Cut 14 (fourteen) $2\frac{1}{2}$ " x WOF strips, then;
 - Subcut into 28 (twenty eight) $2\frac{1}{2}$ " x $14\frac{1}{2}$ " strips, and
 - 4 (four) $2\frac{1}{2}$ " x $12\frac{1}{2}$ " strips.
 - 2 (two) $2\frac{1}{2}$ " x $6\frac{1}{2}$ " strips.
 - 6 (six) $2\frac{1}{2}$ " x $4\frac{1}{2}$ " rectangles.
 - 8 (eight) $2\frac{1}{2}$ " squares.

Fabric R

- Cut 7 (seven) $2\frac{1}{2}$ " x WOF strips.

CONSTRUCTION

Press the seams toward the newly added square or strip, or alternatively, press the seams open based on your preference. Continue to follow this method for pressing throughout the entire block piecing process for this pattern

BLOCK 1

- Sew 1 (one) $2\frac{1}{2}$ " square from fabric **F** to the right side of 1 (one) $2\frac{1}{2}$ " square from fabric **Q**. We will call this Section 1

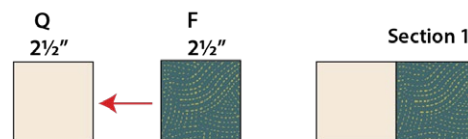


DIAGRAM 1

- Sew 1 (one) $2\frac{1}{2}$ " x $4\frac{1}{2}$ " rectangle from fabric **Q** on top of section 1. We will call this Section 2.

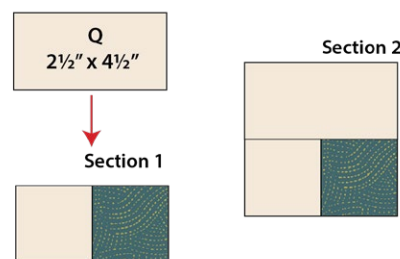


DIAGRAM 2

- Sew 1 (one) $2\frac{1}{2}$ " x $4\frac{1}{2}$ " rectangle from fabric **J** on the right side of section 2. We will call this Section 3.

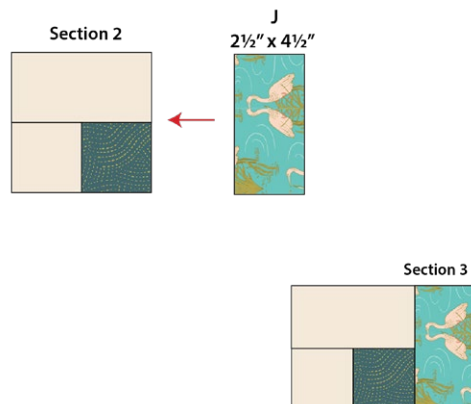


DIAGRAM 3

- Sew 1 (one) $2\frac{1}{2}$ " x $6\frac{1}{2}$ " rectangle from fabric **J** on the bottom of section 3. We will call this Section 4.

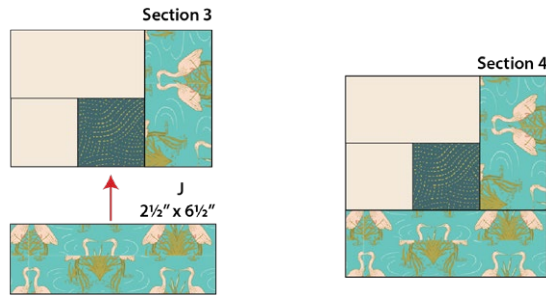


DIAGRAM 4

- Sew 1 (one) 2½" x 6½" rectangle from fabric **E** on the right side of section 4. We will call this Section 5.

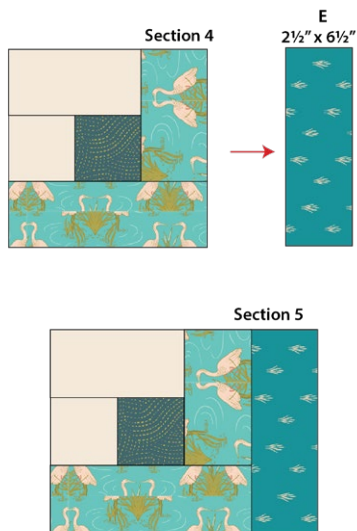


DIAGRAM 5

- Sew 1 (one) $2\frac{1}{2}$ " x $8\frac{1}{2}$ " rectangle from fabric **E** on the bottom of section 5. We will call this Section 6.

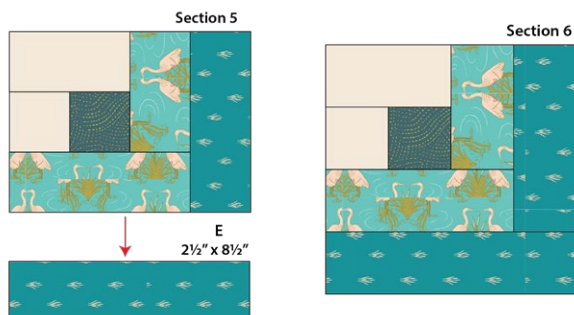


DIAGRAM 6

- Sew 1 (one) 2½" x 8½" rectangle from fabric **D** on the right side of section 6. We will call this Section 7.

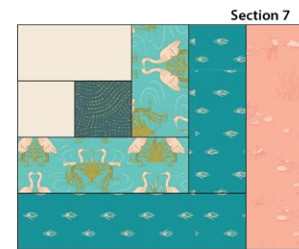
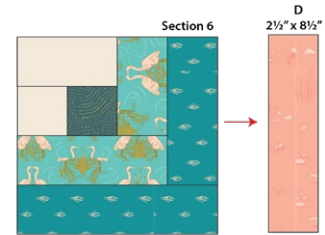


DIAGRAM 7

- Sew 1 (one) $2\frac{1}{2}$ " x $10\frac{1}{2}$ " rectangle from fabric **D** on the bottom of section 7. We will call this Section 8.

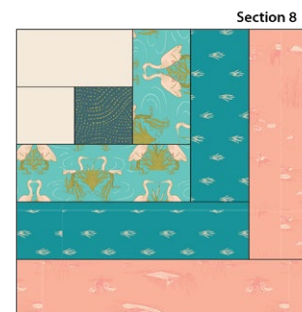
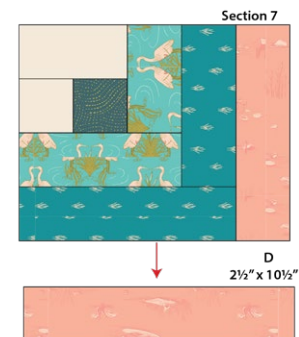


DIAGRAM 8

- Sew 1 (one) $2\frac{1}{2}$ " x $10\frac{1}{2}$ " rectangle from fabric **C** on the right side of section 8. We will call this Section 9.

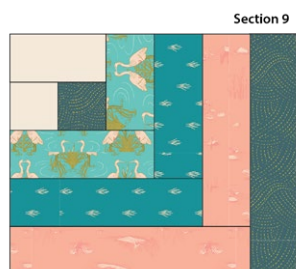
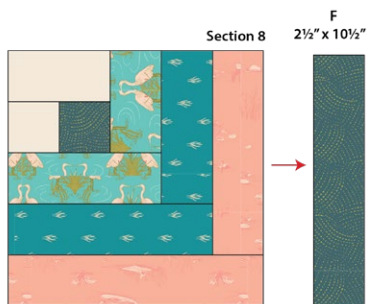


DIAGRAM 9

- Sew 1 (one) 2½" x 12½" rectangle from fabric **C** on the bottom of section 9. We will call this Section 10.

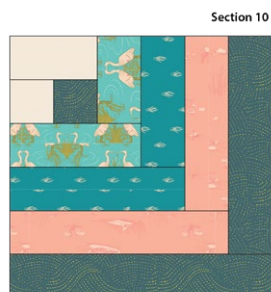
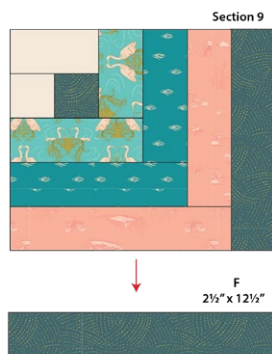


DIAGRAM 10

- Sew 1 (one) $2\frac{1}{2}$ " x $12\frac{1}{2}$ " rectangle from fabric **Q** on the left side of section 10. We will call this Section 11.

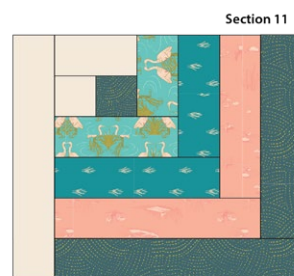
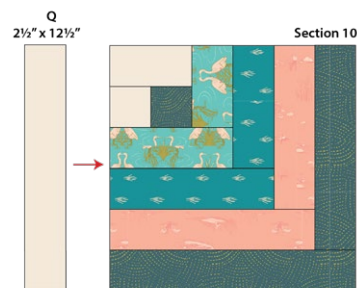


DIAGRAM 11

- Sew 1 (one) $2\frac{1}{2}$ " x $14\frac{1}{2}$ " rectangle from fabric **Q** on top of section 11.
- This should measure $14\frac{1}{2}$ " square. We will call this Block 1.
- Make 1 (one) $14\frac{1}{2}$ " square Block 1

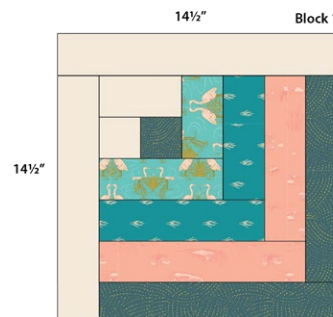
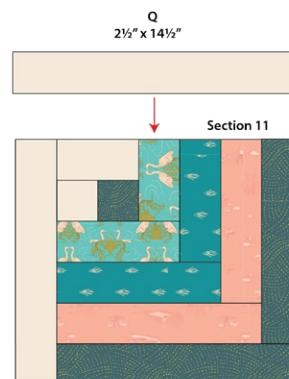


DIAGRAM 12

- Following the same steps, make 1 (one) Block 1.1 using the following fabrics.
- Make 1 (one) 14½" square Block 1.1

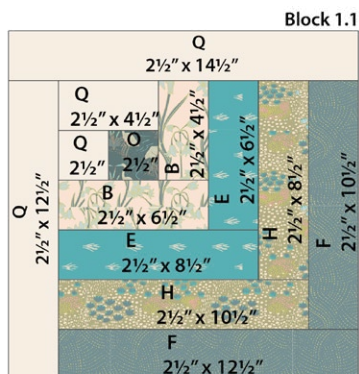


DIAGRAM 13

- Following the same steps used for creating the 1.1 Blocks, carefully mirror the process and attach each new piece on the left side of every section.
- **BLOCK 2**
- Sew 1 (one) 2½" square from fabric **O** to the right side of 1 (one) 2½" square from fabric **Q**. We will call this Section 1.

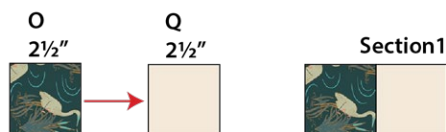


DIAGRAM 14

- Sew 1 (one) 2½" x 4½" rectangle from fabric **Q** on top of section 1. We will call this Section 2.

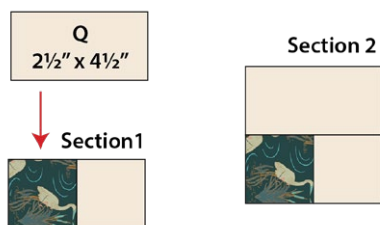


DIAGRAM 15

- Sew 1 (one) 2½" x 4½" rectangle from fabric **H** on the left side of section 2. We will call this Section 3.

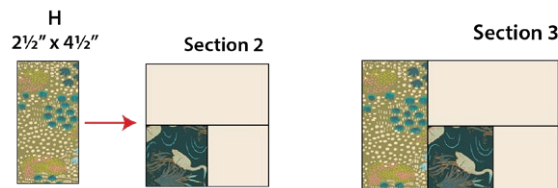


DIAGRAM 16

- Sew 1 (one) 2½" x 6½" rectangle from fabric **H** on the bottom of section 3. We will call this Section 4.

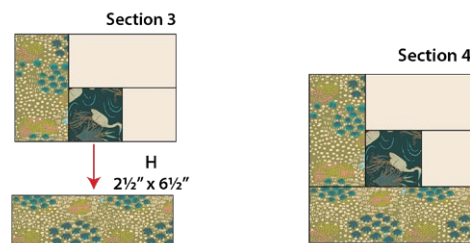


DIAGRAM 17

- Sew 1 (one) 2½" x 6½" rectangle from fabric **D** on the left side of section 4. We will call this Section 5.

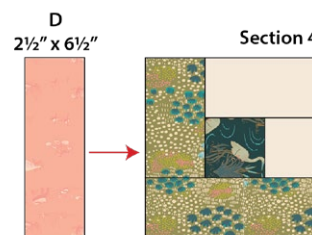


DIAGRAM 18

- Sew 1 (one) $2\frac{1}{2}$ " x $8\frac{1}{2}$ " rectangle from fabric **D** on the bottom side of section 5. We will call this Section 6.

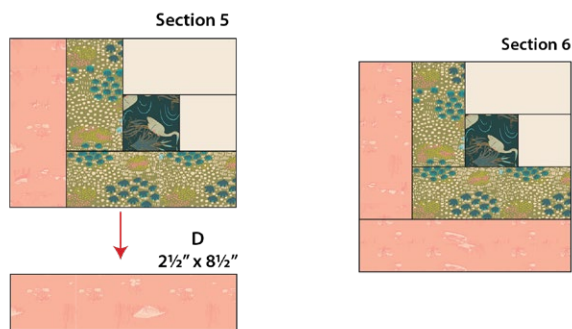


DIAGRAM 19

- Sew 1 (one) $2\frac{1}{2}$ " x $8\frac{1}{2}$ " rectangle from fabric **J** on the left side of section 6. We will call this Section 7.

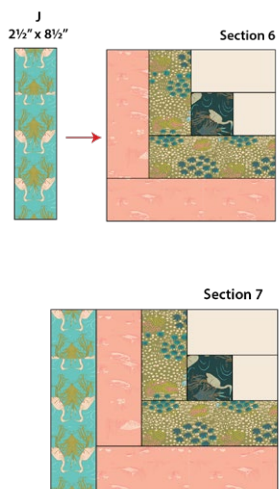


DIAGRAM 20

- Sew 1 (one) $2\frac{1}{2}$ " x $10\frac{1}{2}$ " rectangle from fabric **J** on the left side of section 7. We will call this Section 8.

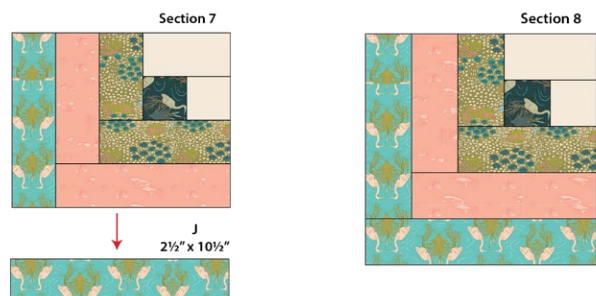


DIAGRAM 21

- Sew 1 (one) $2\frac{1}{2}$ " x $10\frac{1}{2}$ " rectangle from fabric **E** on the left side of section 8. We will call this Section 9.

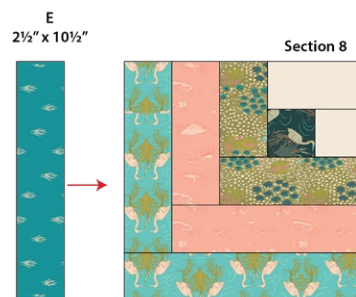


DIAGRAM 22

- Sew 1 (one) $2\frac{1}{2}$ " x $12\frac{1}{2}$ " rectangle from fabric **E** on the bottom side of section 9. We will call this Section 10.

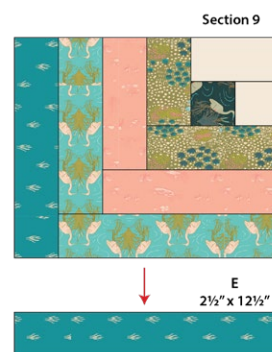


DIAGRAM 23

- Sew 1 (one) 2½" x 12½" rectangle from fabric **Q** on the left side of section 10. We will call this Section 11.

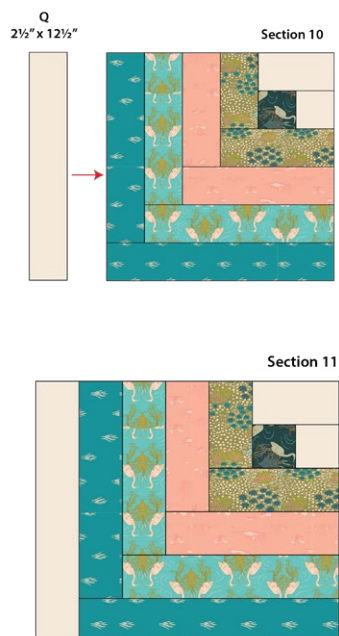


DIAGRAM 24

- Sew 1 (one) $2\frac{1}{2}$ " x $14\frac{1}{2}$ " rectangle from fabric Q on the top side of section 11.
- This should measure $14\frac{1}{2}$ " square. We will call this Block 2. Make 1 (one) $14\frac{1}{2}$ " square Block 2.

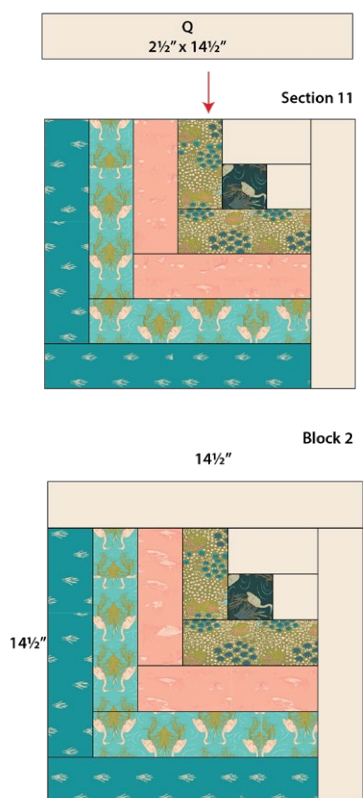


DIAGRAM 25

- Following the same steps, make 1 (one) 14½" square Block 2.1 using the following fabrics.

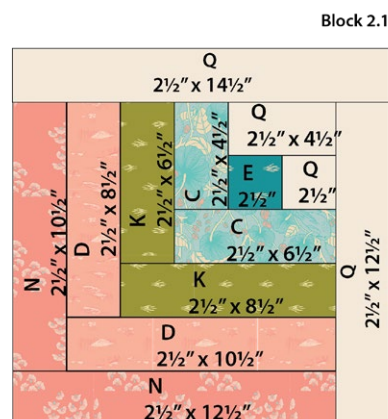


DIAGRAM 26

Block 3

- Sew 1 (one) 2½" square from fabric **Q** to the right side of 1 (one) 2½" square from fabric **N**. We will call this Section 1

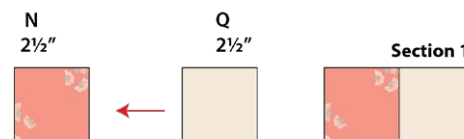


DIAGRAM 27

- Sew 1 (one) $2\frac{1}{2}$ " x $4\frac{1}{2}$ " rectangle from fabric **N** on the bottom of section 1. We will call this Section 2.

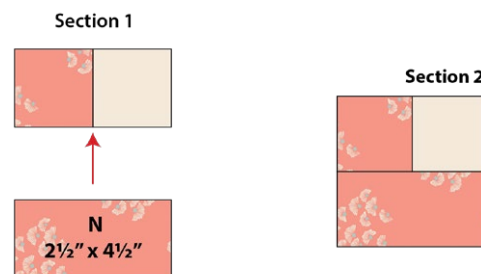


DIAGRAM 28

- Sew 1 (one) $2\frac{1}{2}$ " x $4\frac{1}{2}$ " rectangle from fabric **N** on the right side of section 2. We will call this Section 3.

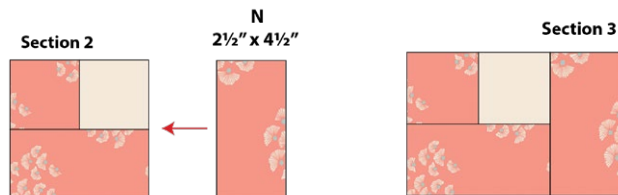


DIAGRAM 29

- Sew 1 (one) $2\frac{1}{2}$ " x $6\frac{1}{2}$ " rectangle from fabric **N** on top of section 3. We will call this Section 4.



DIAGRAM 30

- Sew 1 (one) $2\frac{1}{2}$ " x $6\frac{1}{2}$ " rectangle from fabric **D** on the left side of section 4. We will call this Section 5.



DIAGRAM 31

- Sew 1 (one) $2\frac{1}{2}$ " x $8\frac{1}{2}$ " rectangle from fabric **D** to the bottom of section 5. We will call this Section 6.

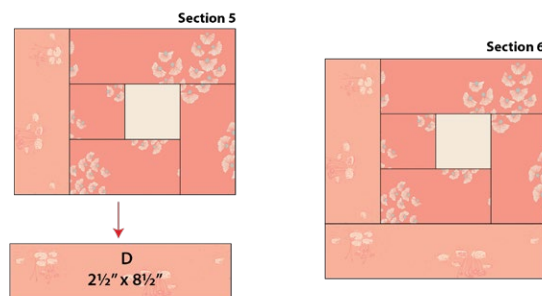


DIAGRAM 32

- Sew 1 (one) $2\frac{1}{2}$ " x $8\frac{1}{2}$ " rectangle from fabric **D** to the right side of section 6. We will call this Section 7.

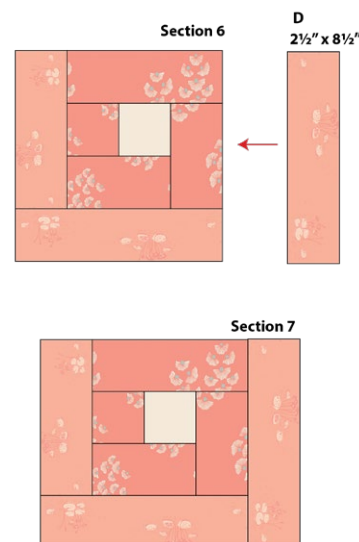


DIAGRAM 33

- Sew 1 (one) $2\frac{1}{2}$ " x $10\frac{1}{2}$ " rectangle from fabric **D** to the top of section 7. We will call this Section 8.

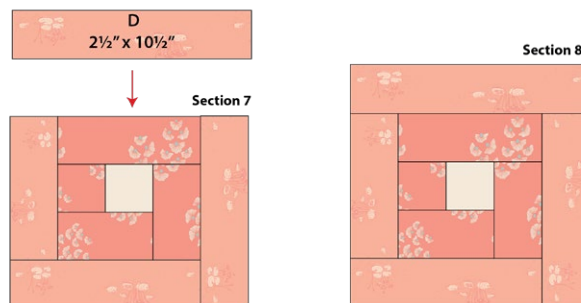


DIAGRAM 34

- Sew 1 (one) $2\frac{1}{2}$ " x $10\frac{1}{2}$ " rectangle from fabric **G** to the left side of section 8. We will call this Section 9.

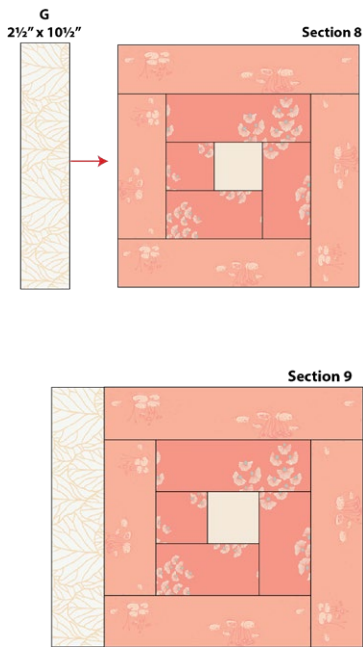


DIAGRAM 35

- Sew 1 (one) $2\frac{1}{2}$ " x $12\frac{1}{2}$ " rectangle from fabric **G** to the bottom of section 9. We will call this Section 10.



DIAGRAM 36

- Sew 1 (one) $2\frac{1}{2}$ " x $12\frac{1}{2}$ " rectangle from fabric **G** to the right side of section 10. We will call this Section 11.

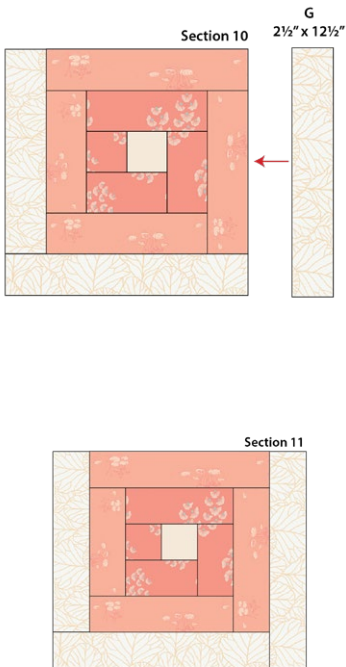


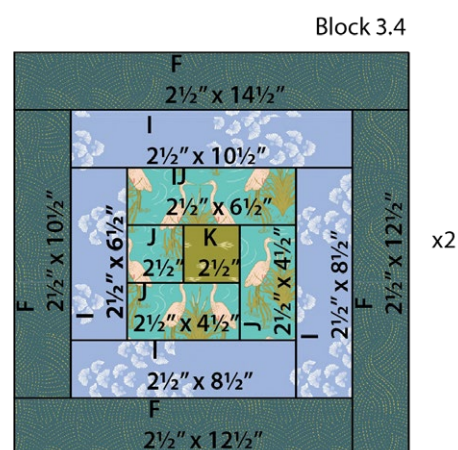
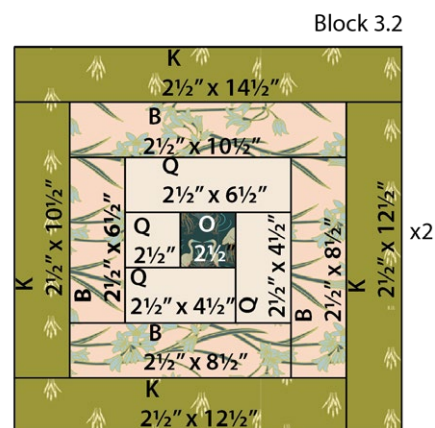
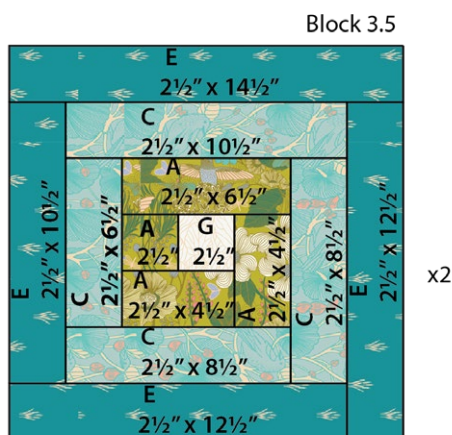
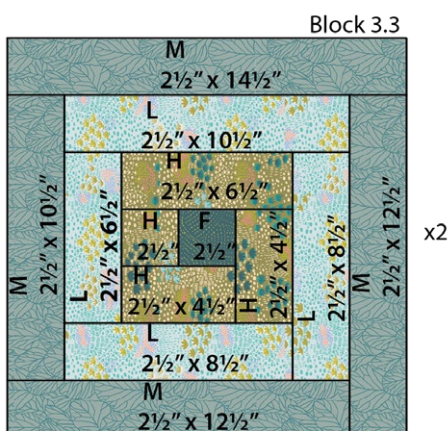
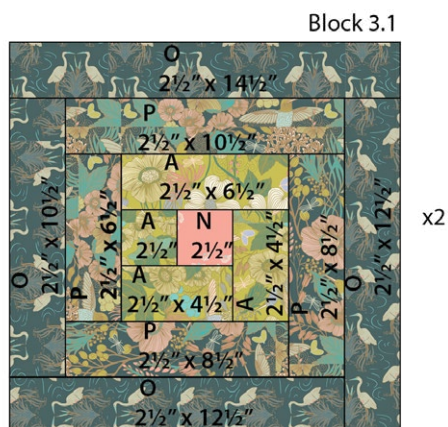
DIAGRAM 37

- Sew 1 (one) $2\frac{1}{2}$ " x $14\frac{1}{2}$ " rectangle from fabric **G** to the top of section 11. This should measure $14\frac{1}{2}$ " square.
- We will call this Block 3. Make 2 (two) $14\frac{1}{2}$ " square Block 3.



DIAGRAM 38

- Following the same steps, make 2 (two) 14½" square Block 3.1, Block 3.2, Block 3.3, Block 3.4, and Block 3.5.



Sashing Rows

- Sew 4 (four) $2\frac{1}{2}$ " x $14\frac{1}{2}$ " strips from fabric **Q** alternately between 1 (one) $2\frac{1}{2}$ " square from fabric **A**, **N** and **F** in that order to make sashing row.
- Shashing should measure $62\frac{1}{2}$ " long.

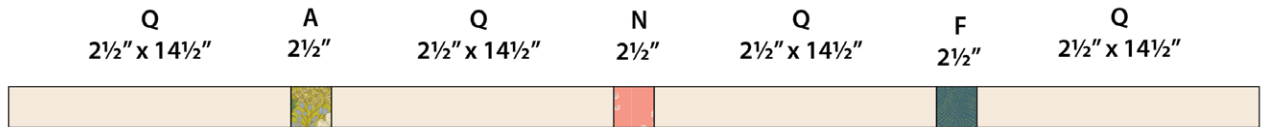


DIAGRAM 40

- Sew 4 (four) $2\frac{1}{2}$ " x $14\frac{1}{2}$ " strips from fabric **Q** alternately between 1 (one) $2\frac{1}{2}$ " square from fabric **I**, **P** and **N** in that order to make sashing row.
- Shashing should measure $62\frac{1}{2}$ " long.



DIAGRAM 41

- Sew 4 (four) $2\frac{1}{2}$ " x $14\frac{1}{2}$ " strips from fabric **Q** alternately between 1 (one) $2\frac{1}{2}$ " square from fabric **F**, **I** and **E** in that order to make sashing row.
- Shashing should measure $62\frac{1}{2}$ " long.



DIAGRAM 42

• **Block Rows**

- Arrange blocks as shown into 4 rows of 4 blocks each with 2½" x 14½" sashings strips between, as shown.
- Sew into 4 row Blocks.

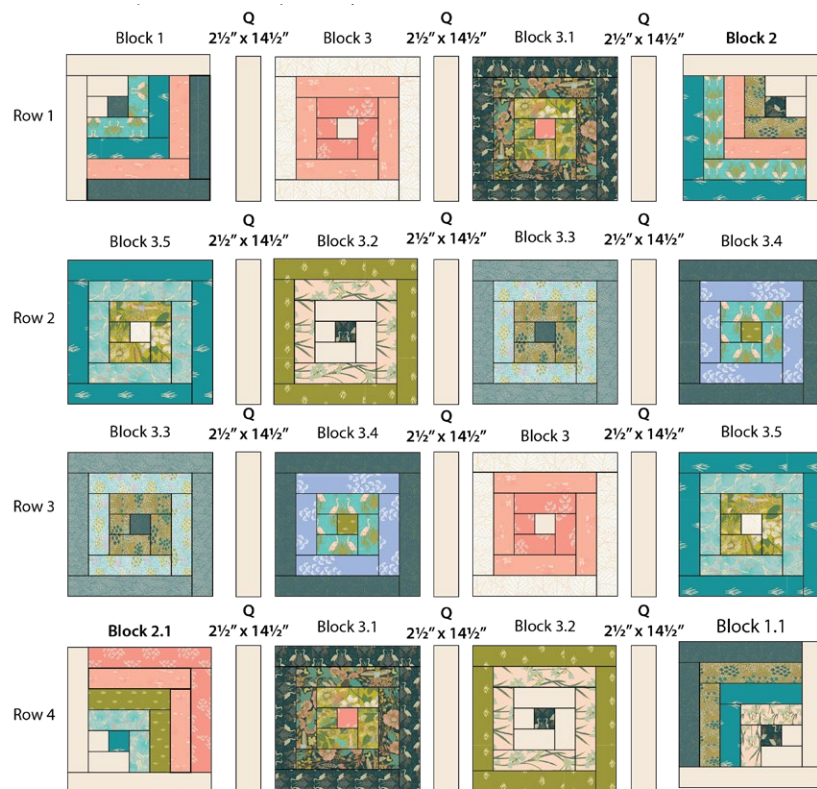


DIAGRAM 43

- Join the block rows and sashing rows as shown.

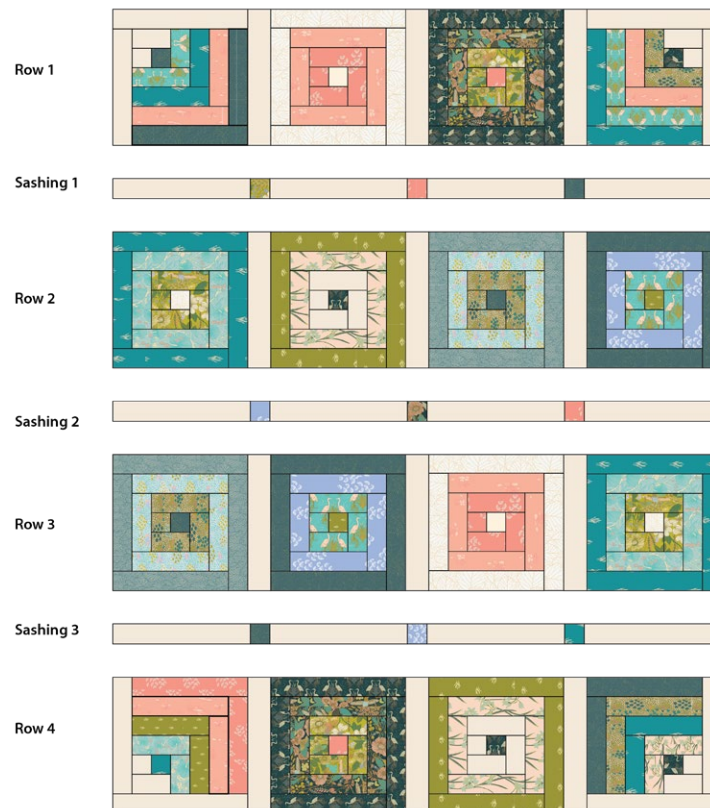


DIAGRAM 44

QUILT TOP

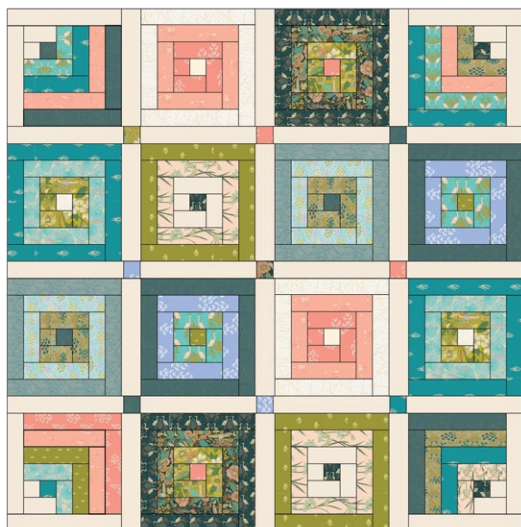


DIAGRAM 45

QUILT ASSEMBLY

Sew right sides together.

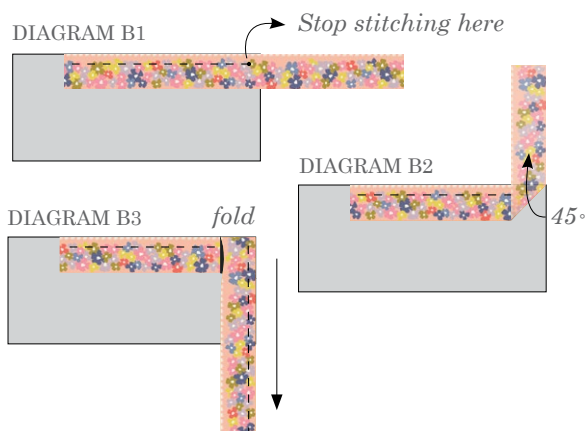
- Place BACKING FABRIC on a large surface wrong side up. Stretch it with masking tape against that surface.
- Place BATTING on top of backing fabric.
- Place TOP on top of the batting with right side facing up. Smooth away wrinkles using your hands.
- Pin all layers together and baste with basting thread, using long stitches. You can also use safety pins to join the layers.
- Machine or hand quilt starting at the center and working towards the corners. Remember that quilting motifs are a matter of personal preference. Have fun choosing yours!
- After you finished, trim excess of any fabric or batting, squaring the quilt to proceed to bind it.

BINDING

Sew right sides together.

- Sew nine (9) 2½" x WOF strips from fabric **R** to make a final strip 294" long and fold the strip length-wise. Start sewing the binding strip in the middle of one side of the quilt leaving an approximated 5" tail. Sew with ¼" seam allowance (using straight stitch), aligning the strip's raw edge with the quilt top's raw edge.

- Stop stitching ¼" before the edge of the quilt (DIAGRAM B1). Clip the threads. Remove the quilt from under the machine presser foot. Fold the strip in a motion of 45° and upward, pressing with your fingers (DIAGRAM B2). Hold this fold with your finger, bring the strip down in line with the next edge, making a horizontal fold that aligns with the top edge of the quilt (DIAGRAM B3). Start sewing at ¼" of the border, stitching all the layers. Do the same in the four corners of the quilt.
- Stop stitching before you reach the last 5 or 6 inches. Cut the threads and remove the quilt from under the machine presser foot. Lay the loose ends of the binding flat along the quilt edge, folding the ends back on themselves where they meet. Press them together to form a crease. Using this crease as the stitching line, sew the two open ends of the binding with right sides together (you can help yourself marking with a pencil if the crease is difficult to see).
- Trim seam to ¼" and press open. Complete the sewing. Turn binding to back of the quilt, turn raw edge inside and stitch by hand using blind stitch.



- If you are using our 2.5 edition (binding fabric), click or scan this QR code to see a tutorial on how to use this specialty fabric.



XXXXXXXXXXXXXXXXXXXXXXXXXXXX

*Congratulations
& enjoy*

XXXXXXXXXXXXXXXXXXXXXXXXXXXX



artgalleryfabrics.com

NOTE: While all possible care has been taken to ensure the accuracy of this pattern, We are not responsible for printing errors or the way in which individual work varies.

Please read instructions carefully before starting the construction of this quilt. If desired, wash and iron your fabrics before starting to cut.

© 2025 Courtesy of Art Gallery Quilts LLC. All Rights Reserved.