

X  
X  
X  
X  
X  
X  
X  
X  
X  
X  
X  
X

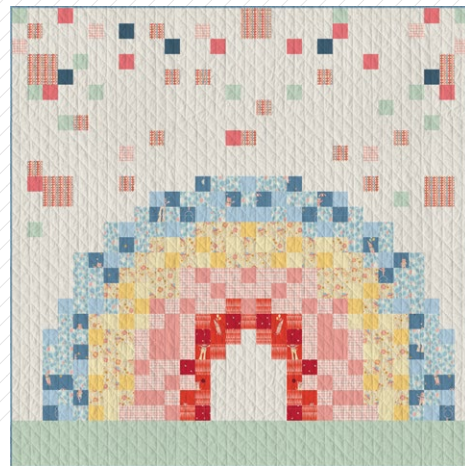
XXXXXXXXXXXXXXXXXXXXXXXXXXXX



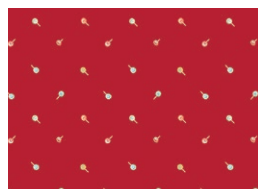


# Rainbow Glow

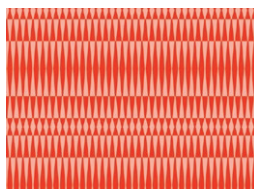
QUILT DESIGNED BY AGFstudio



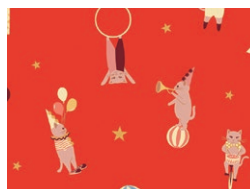
FABRICS DESIGNED BY AGF STUDIO



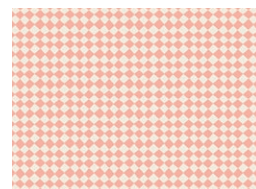
**Fabric A**  
PRP44204  
SWEET SWIRLS



**Fabric B**  
PRP44209  
CARNIVAL STRIPE FLAME



**Fabric C**  
PRP44200  
PURRFECT PERFORMERS  
WARM



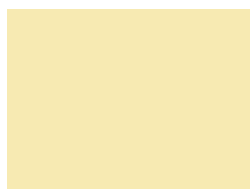
**Fabric D**  
PRP44201  
HARLEQUIN SWEET



**Fabric E**  
PE 450  
GRAPEFRUIT



**Fabric F**  
PRP54206  
PURRFECTLY CLOWNISH  
SUN



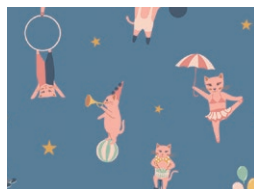
**Fabric G**  
PE 580  
BUTTERMILK



**Fabric H**  
PE 435  
BANANA CREAM



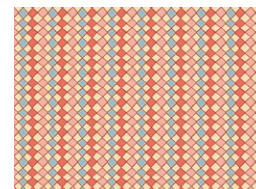
**Fabric I**  
PRP54203  
SKY CELEBRATION



**Fabric J**  
PRP54200  
PURRFECT PERFORMERS  
COOL



**Fabric K**  
PE 434  
TRANQUIL WATERS



**Fabric L**  
PRP54201  
HARLEQUIN JOY



FEEL THE DIFFERENCE

© 2025 Courtesy of Art Gallery Quilts LLC. All Rights Reserved.



**Fabric M**  
PE 412  
TENDER GREEN



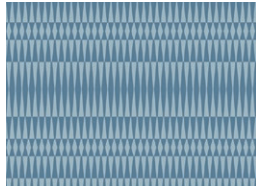
**Fabric N**  
PE 438  
CORAL REEF



**Fabric O**  
PE 454  
MEDITERRANEO



**Fabric P**  
PE 408  
WHITE LINEN



**Fabric Q (Binding)**  
PRP54209  
CARNIVAL STRIPE SKY



**BACKING**  
F44210a  
MEOW IN THE CLOUDS



# Rainbow Glow

FINISHED SIZE | 60½" x 60½"

## FABRIC REQUIREMENTS

Fabric <b>A</b>	PRP44204	Fat Eight.
Fabric <b>B</b>	PRP44209	Fat Eight.
Fabric <b>C</b>	PRP44200	Fat Eight.
Fabric <b>D</b>	PRP44201	¾ yd.
Fabric <b>E</b>	PE-450	Fat Q.
Fabric <b>F</b>	PRP54206	¾ yd.
Fabric <b>G</b>	PE-580	Fat Q.
Fabric <b>H</b>	PE-435	Fat Q.
Fabric <b>I</b>	PRP54203	½ yd.
Fabric <b>J</b>	PRP54200	¼ yd.
Fabric <b>K</b>	PE-434	¼ yd.
Fabric <b>L</b>	PRP54201	¼ yd.
Fabric <b>M</b>	PE-412	⅝ yd.
Fabric <b>N</b>	PE-438	Fat Eight.
Fabric <b>O</b>	PE-454	Fat Eight.
Fabric <b>P</b>	PE-408	2 yds.
Fabric <b>Q</b>	PRP54209	½ yd.

### BACKING FABRIC

F44210a 4 yds (Suggested)

### BINDING FABRIC

Fabric **Q** PRP54209 (Included)

## CUTTING DIRECTIONS

¼" seam allowances are included.  
WOF means width of fabric.

### Fabric A

- Eight (8) 2½" squares.

### Fabric B

- Fifteen (15) 2½" squares.

### Fabric C

- Cut three (3) 2½" x WOF" strips, then;  
Sub-cut:
  - Two (2) 4½" x 2½" rectangles.
  - Six (6) 2½" squares.

### Fabric D

- Cut Four (4) 2½" x WOF" strips, then;  
Sub-cut:
  - Two (2) 6½" x 2½" strips
  - Ten (10) 4 1/2" x 2 1/2" rectangles.
  - Thirty (30) 2½" squares.

### Fabric E

- Cut Four (4) 2½" x WOF strips, then;  
Sub-cut:
  - Two (2) 6½" x 2½" rectangles.
  - Two (2) 4½" x 2½" rectangles.
  - Twenty (20) 2½" squares.

### Fabric F

- Cut Four (4) 2½" x WOF strips, then;  
Sub-cut:
  - Two (2) 8½" x 2½" rectangles.
  - Eleven (11) 4½" x 2½" rectangle
  - Twenty Six (26) 2½" squares.

### Fabric G

- Cut Three (3) 2½" x WOF" strips, then;  
Sub-cut:
  - Two (2) 4 ½" x 2 ½" rectangles.
  - Eighteen (18) 2½" squares.



## Fabric H

- Cut three (3)  $2\frac{1}{2}$ " x WOF" strips, then;  
Sub-cut:  
- Twenty One (21)  $2\frac{1}{2}$ " squares.

## Fabric I

- Cut four (4)  $2\frac{1}{2}$ " x WOF strips, then;  
Sub-cut:  
- Four (4)  $8\frac{1}{2}$ " x  $2\frac{1}{2}$ " rectangles.  
- Two (2)  $6\frac{1}{2}$ " x  $2\frac{1}{2}$ " rectangles.  
- Six (6)  $4\frac{1}{2}$ " x  $2\frac{1}{2}$ " rectangles.  
- Twenty Nine (29)  $2\frac{1}{2}$ " squares.

## Fabric J

- Cut two (2)  $2\frac{1}{2}$ " x WOF strips, then;  
Sub-cut:  
- Twenty eight (28)  $2\frac{1}{2}$ " squares.

## Fabric K

- Cut two (2)  $2\frac{1}{2}$ " x WOF strips, then;  
Sub-cut:  
- Twenty eight (28)  $2\frac{1}{2}$ " squares.

## Fabric L

- Cut two (2)  $2\frac{1}{2}$ " x WOF strips, then;  
Sub-cut:  
- Nine (9)  $4\frac{1}{2}$ " x  $2\frac{1}{2}$ " rectangles.  
- Fourteen (14)  $2\frac{1}{2}$ " squares.

## Fabric M

- Cut two (2)  $6\frac{1}{2}$ " x WOF strips.
- Cut two (2)  $2\frac{1}{2}$ " x WOF strips, then;  
Sub-cut:  
- Fourteen (14)  $2\frac{1}{2}$ " squares.

## Fabric N

- Cut eleven (11)  $2\frac{1}{2}$ " squares.

## Fabric O

- Cut five (5)  $2\frac{1}{2}$ " squares.

## Fabric P

- Cut two (2)  $42\frac{1}{2}$ " x  $2\frac{1}{2}$ " strips.
- Cut one (1)  $28\frac{1}{2}$ " x  $2\frac{1}{2}$ " strip.
- Cut two (2)  $26\frac{1}{2}$ " x  $2\frac{1}{2}$ " strips.
- Cut three (3)  $24\frac{1}{2}$ " x  $2\frac{1}{2}$ " strips.
- Cut one (1)  $22\frac{1}{2}$ " x  $2\frac{1}{2}$ " strip.
- Cut one (1)  $2\frac{1}{2}$ " x WOF strips, then;  
Sub-cut:  
- Two (2)  $20\frac{1}{2}$ " x  $2\frac{1}{2}$ " strips.
- Cut three (3)  $2\frac{1}{2}$ " x WOF strips, then;  
Sub-cut:  
- Five (5)  $16\frac{1}{2}$ " x  $2\frac{1}{2}$ " strips.
- Cut two (2)  $2\frac{1}{2}$ " x WOF strips, then;  
Sub-cut:  
- Four (4)  $14\frac{1}{2}$ " x  $2\frac{1}{2}$ " strips.
- Cut three (3)  $2\frac{1}{2}$ " x WOF strips, then;  
Sub-cut:  
- Seven (7)  $12\frac{1}{2}$ " x  $2\frac{1}{2}$ " strips.
- Cut two (2)  $2\frac{1}{2}$ " x WOF strips, then;  
Sub-cut:  
- Eight (8)  $10\frac{1}{2}$ " x  $2\frac{1}{2}$ " strip.
- Cut two (2)  $2\frac{1}{2}$ " x WOF strips, then;  
Sub-cut:  
- Five (5)  $8\frac{1}{2}$ " x  $2\frac{1}{2}$ " strips.
- Cut three (3)  $2\frac{1}{2}$ " x WOF strips, then;  
Sub-cut:  
- Sixteen (16)  $6\frac{1}{2}$ " x  $2\frac{1}{2}$ " strips.
- Cut two (2)  $2\frac{1}{2}$ " x WOF strips, then;  
Sub-cut:  
- Fifteen (15)  $4\frac{1}{2}$ " x  $2\frac{1}{2}$ " strips.
- Cut one (1)  $2\frac{1}{2}$ " x WOF strips, then;  
Sub-cut:  
- Fourteen (14)  $2\frac{1}{2}$ " squares.

## Fabric Q

- Cut Six (6)  $2\frac{1}{2}$ " x WOF strips. (Binding)

# CONSTRUCTION

*¼" seam allowances are included.  
WOF means width of fabric.*

- This quilt top is made up of thirty (30) vertical columns, but it will be assembled in horizontal rows (strip sets, **SS#**). Refer to the diagram below for guidance on the construction. Be sure to rotate any pieces with directional fabrics so they face the correct way.

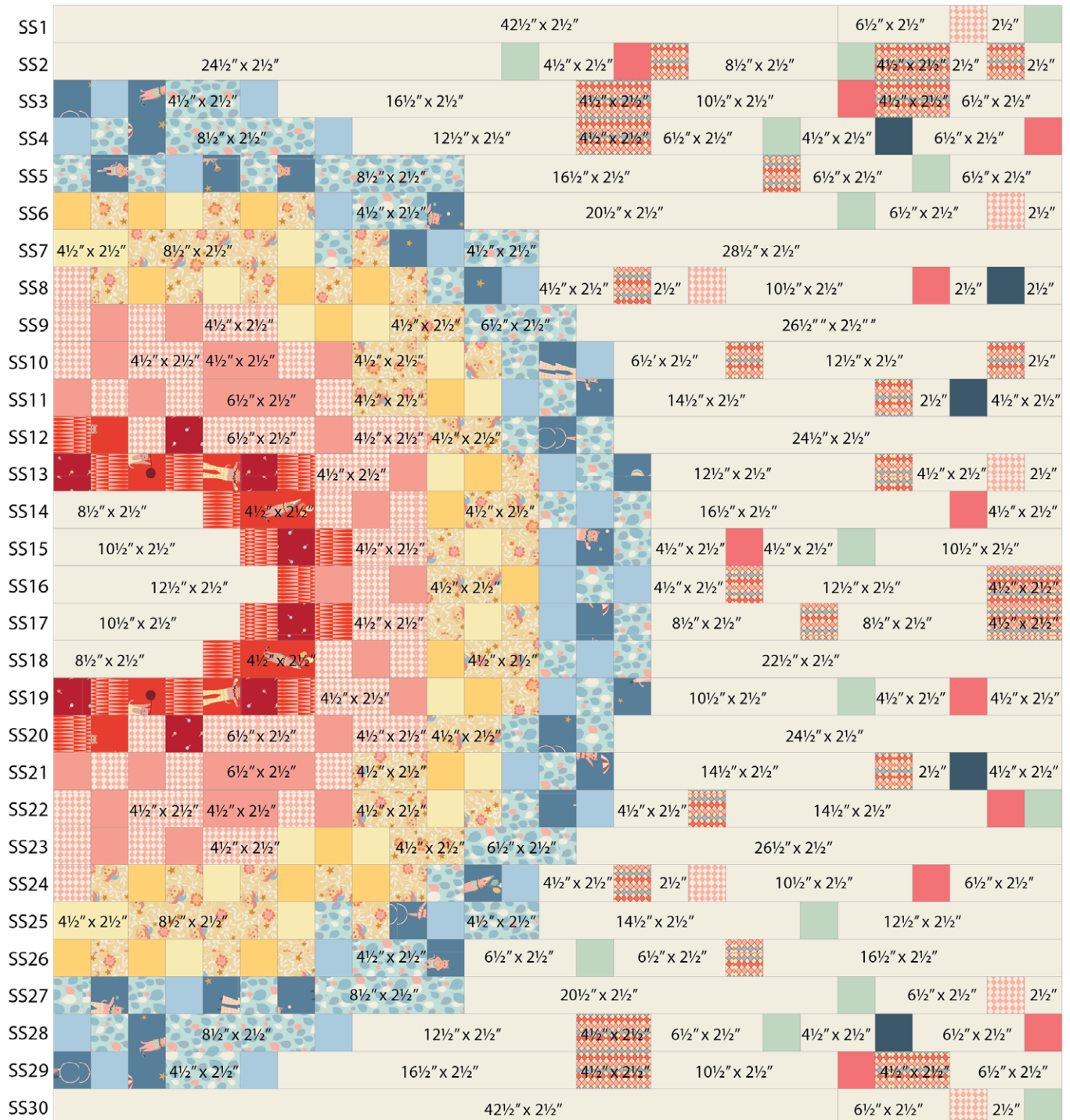


DIAGRAM 1



- To assemble each strip set, gather the fabric pieces listed below and arrange them according to the placement shown in the diagram.

### SS5:

- One (1) 16" strip from fabric **P**
- Two (2) 6½" strip from fabric **P**
- One (1) 8½" strip from fabric **I**
- Three (3) 2½" squares from fabrics **I, J**
- One (1) 2½" square from fabrics **K, L, M**



DIAGRAM 6

### SS6:

- One (1) 20½" strip from fabric **P**
- One (1) 6½" strip from fabric **P**
- One (1) 4½" strip from fabric **I**
- Three (3) 2½" squares from fabrics **F, H**
- One (1) 2½" square from fabrics **D, G, J, K, M, P**



DIAGRAM 7

### SS7:

- One (1) 28½" strip from fabric **P**
- One (1) 8½" strip from fabric **F**
- One (1) 4½" strip from fabrics **G, I**
- One (1) 2½" square from fabrics **F, G, I, J, K**



DIAGRAM 8

### SS8:

- One (1) 10½" strip from fabric **P**
- One (1) 4½" strip from fabric **P**
- Four (4) 2½" squares from fabric **F**
- Three (3) 2½" squares from fabrics **H, P**
- Two (2) 2½" squares from fabric **D**
- One (1) 2½" square from fabrics **G, I, J, K, L, N, O**

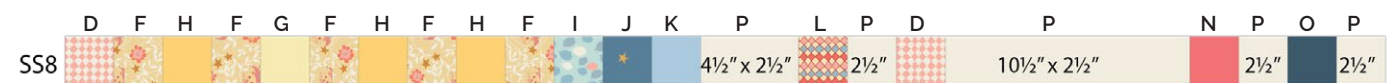


DIAGRAM 9





### SS13:

- One (1) 12½" strip from fabric **P**
- One (1) 4½" strip from fabrics **D, P**
- Three (3) 2½" squares from fabric **B**
- Two (2) 2½" squares from fabrics **A, C**
- One (1) 2½" square from fabrics **D, E, F, G, H, I, J, K, L, P**



DIAGRAM 14

### SS14:

- One (1) 16½" strip from fabric **P**
- One (1) 8½" strip from fabric **P**
- One (1) 4½" strip from fabrics **C, F, P**
- Two (2) 2½" squares from fabrics **D, I**
- One (1) 2½" square from fabrics **B, E, H, K, N**



DIAGRAM 15

### SS15:

- Two (2) 10½" strips from fabric **P**
- Two (2) 4½" strips from fabric **P**
- One (1) 4½" strip from fabric **D**
- Two (2) 2½" squares from fabrics **B, F**
- One (1) 2½" square from fabrics **A, G, I, J, K, M, N**



DIAGRAM 16

### SS16:

- Two (2) 12½" strip from fabric **P**
- One (1) 4½" strip from fabrics **F, L, P**
- Two (2) 2½" squares from fabrics **E, K**
- One (1) 2½" square from fabrics **B, D, H, I, L**



DIAGRAM 17



### SS17:

- One (1) 10½" strip from fabric **P**
- Two (2) 8½" strips from fabric **P**
- One (1) 4½" strip from fabrics **D, L**
- Two (2) 2½" squares from fabrics **B, F**
- One (1) 2½" square from fabrics **A, G, I, J, K, L**



DIAGRAM 18

### SS18:

- One (1) 22½" strip from fabric **P**
- One (1) 8½" strips from fabric **P**
- One (1) 4½" strip from fabrics **C, F**
- Two (2) 2½" squares from fabrics **D, I**
- One (1) 2½" square from fabrics **B, E, H, K**

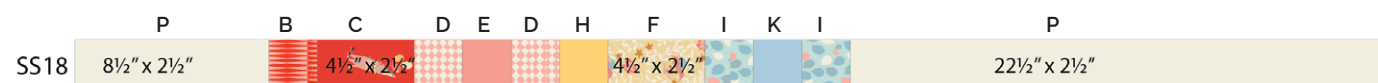


DIAGRAM 19

### SS19:

- One (1) 10½" strip from fabric **P**
- Two (2) 4½" strips from fabric **P**
- One (1) 4½" strip from fabrics **D**
- Three (3) 2½" squares from fabric **B**
- Two (2) 2½" squares from fabrics **A, C**
- One (1) 2½" square from fabrics **E, F, G, H, I, J, K, M, N**



DIAGRAM 20

### SS20:

- One (1) 24½" strip from fabric **P**
- One (1) 6½" strips from fabric **D**
- One (1) 4½" strip from fabrics **D, F**
- Two (2) 2½" squares from fabric **I**
- One (1) 2½" square from fabrics **A, B, C, D, E, J**



DIAGRAM 21

### SS21:

- One (1) 14½" strip from fabric **P**
- One (1) 6½" strips from fabric **E**
- One (1) 4½" strip from fabrics **F, P**
- Three (3) 2½" squares from fabric **D**
- Two (2) 2½" squares from fabric **E**
- One (1) 2½" square from fabrics **G, H, I, J, K, L, O, P**



DIAGRAM 22

### SS22:

- One (1) 14½" strip from fabric **P**
- One (1) 4½" strip from fabrics **D, E, F, P**
- Two (2) 2½" squares from fabrics **D, E**
- One (1) 2½" square from fabrics **F, G, I, J, K, L, M, N**



DIAGRAM 23

### SS23:

- One (1) 26½" strip from fabric **P**
- One (1) 6½" strip from fabric **I**
- One (1) 4½" strip from fabrics **D, F**
- Two (2) 2½" squares from fabrics **D, E, G**
- One (1) 2½" square from fabrics **H**

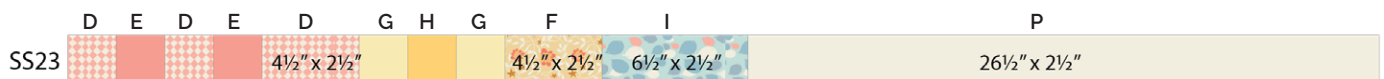


DIAGRAM 24

### SS24:

- One (1) 10½" strip from fabric **P**
- One (1) 6½" strip from fabric **P**
- One (1) 4½" strip from fabrics **P**
- Five (5) 2½" squares from fabric **F**
- Three (3) 2½" squares from fabric **H**
- Two (2) 2½" squares from fabrics **D**
- One (1) 2½" square from fabrics **G, I, J, K, L, N, P**

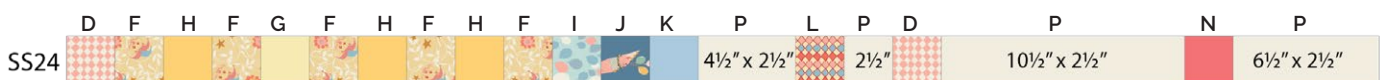


DIAGRAM 25



### SS25:

- One (1) 12½" strip from fabric **P**
- One (1) 14½" strip from fabric **P**
- One (1) 8½" strip from fabric **F**
- Two (2) 4½" strip from fabrics **G, I**
- One (1) 2½" square from fabrics **F, G, I, J, K**

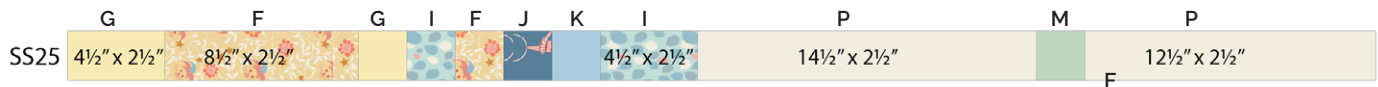


DIAGRAM 26

### SS26:

- One (1) 16½" strip from fabric **P**
- Two (2) 6½" strip from fabric **P**
- One (1) 4½" strip from fabric **I**
- Three (3) 2½" squares from fabrics **F, H**
- One (1) 2½" square from fabrics **G, J, K, L, M**

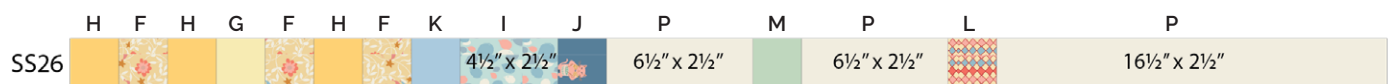


DIAGRAM 27

### SS27:

- One (1) 20½" strip from fabric **P**
- One (1) 8½" strip from fabric **I**
- One (1) 6½" strip from fabric **P**
- Three (3) 2½" squares from fabrics **I, J**
- One (1) 2½" square from fabrics **D, K, M, P**

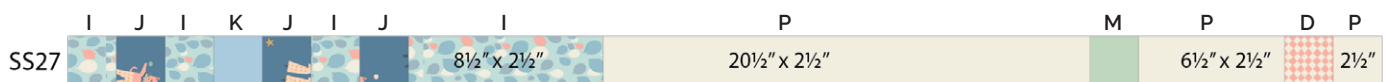


DIAGRAM 28

### SS28:

- One (1) 12½" strip from fabric **P**
- One (1) 8½" strip from fabric **I**
- Two (2) 6½" strips from fabric **P**
- One (1) 4½" strip from fabrics **L, P**
- Two(2) 2½" squares from fabric **K**
- One (1) 2½" square from fabrics **I, J, N, O**



DIAGRAM 29

**SS29:**

- One (1) 16½" strip from fabric **P**
- One (1) 10½" strip from fabric **P**
- One (1) 6½" strip from fabric **P**
- Two (2) 4½" strips from fabric **L**
- One (1) 4½" strip from fabric **I**
- Two(2) 2½" squares from fabrics **J, K**
- One (1) 2½" square from fabric **N**



DIAGRAM 30

**SS30:**

- One (1) 42½" strip from fabric **P**
- One (1) 6½" strip from fabric **P**
- One (1) 2½" square from fabrics **D, M, P**

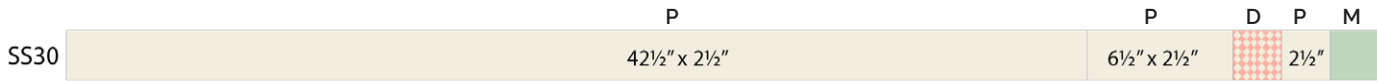


DIAGRAM 31

# QUILT TOP

- Assemble the quilt row by row, as shown in the diagram below.

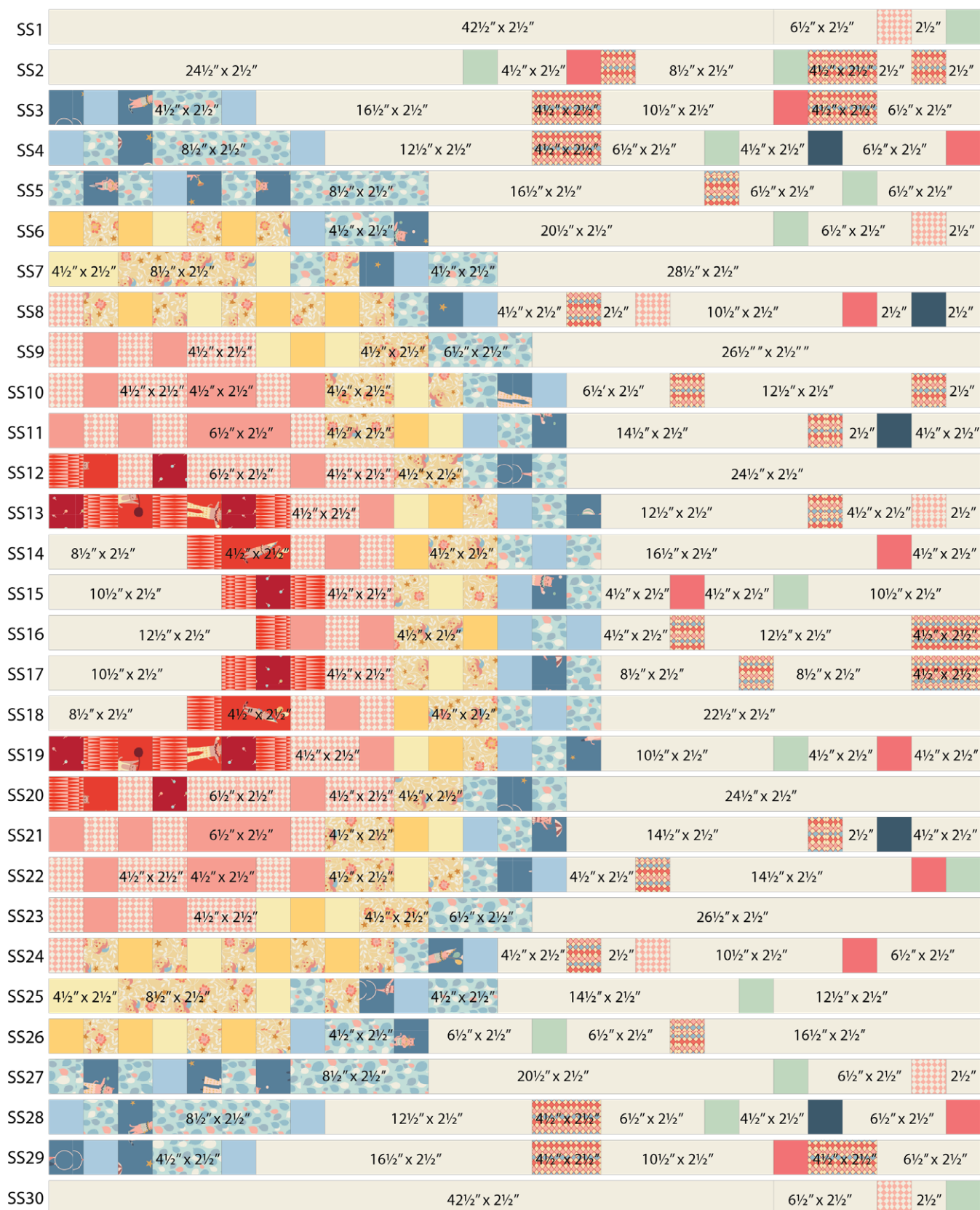


DIAGRAM 32



DIAGRAM 33

## QUILT ASSEMBLY

*Sew rights sides together.*

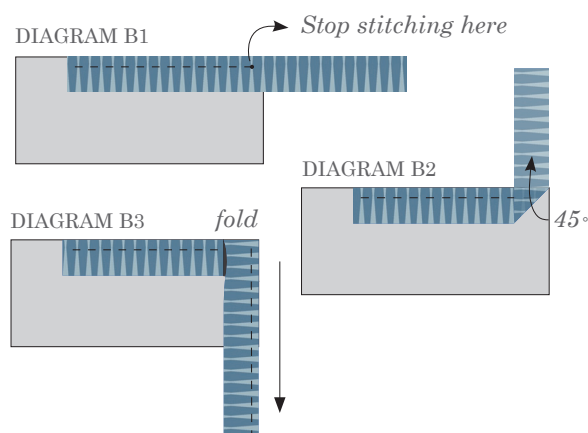
- Place BACKING FABRIC on a large surface wrong side up. Stretch it with masking tape against that surface.
- Place BATTING on top of backing fabric.
- Place TOP on top of the batting with right side facing up. Smooth away wrinkles using your hands.
- Pin all layers together and baste with basting thread, using long stitches. You can also use safety pins to join the layers.
- Machine or hand quilt starting at the center and working towards the corners. Remember that quilting motifs are a matter of personal preference. Have fun choosing yours!
- After you finished, trim excess of any fabric or batting, squaring the quilt to proceed to bind it.

## BINDING

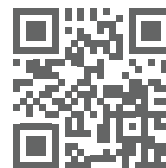
*Sew rights sides together.*

- Sew six (6)  $2\frac{1}{2}$ " x WOF strips from fabric [Q](#) to make a final strip 252" long and fold the strip length-wise. Start sewing the binding strip in the middle of one side of the quilt leaving an approximated 5" tail. Sew with  $\frac{1}{4}$ " seam allowance (using straight stitch), aligning the strip's raw edge with the quilt top's raw edge.
- Stop stitching  $\frac{1}{4}$ " before the edge of the quilt (DIAGRAM B 1). Clip the threads. Remove the quilt from under the machine presser foot. Fold the strip in a motion of  $45^\circ$  and upward, pressing with your fingers (DIAGRAM B2). Hold this fold with your finger, bring the strip down in line with the next edge, making a horizontal fold that aligns with the top edge of the quilt (DIAGRAM B3). Start sewing at  $\frac{1}{4}$ " of the border, stitching all the layers. Do the same in the four corners of the quilt.

- Stop stitching before you reach the last 5 or 6 inches. Cut the threads and remove the quilt from under the machine presser foot. Lay the loose ends of the binding flat along the quilt edge, folding the ends back on themselves where they meet. Press them together to form a crease. Using this crease as the stitching line, sew the two open ends of the binding with right sides together (you can help yourself marking with a pencil if the crease is difficult to see).
- Trim seam to  $\frac{1}{4}$ " and press open. Complete the sewing. Turn binding to back of the quilt, turn raw edge inside and stitch by hand using blind stitch.



- If you are using our 2.5 edition (binding fabric), click or scan this QR code to see a tutorial on how to use this specialty fabric.



XXXXXXXXXXXXXXXXXXXXXXXXXXXXXXXXXXXX

*Congratulations  
& enjoy*

XXXXXXXXXXXXXXXXXXXXXXXXXXXXXXXXXXXX



[artgalleryfabrics.com](http://artgalleryfabrics.com)

NOTE: While all possible care has been taken to ensure the accuracy of this pattern, We are not responsible for printing errors or the way in which individual work varies.

Please read instructions carefully before starting the construction of this quilt. If desired, wash and iron your fabrics before starting to cut.

© 2025 Courtesy of Art Gallery Quilts LLC. All Rights Reserved.