

X
X
X
X
X
X
X
X
X
X
X
X



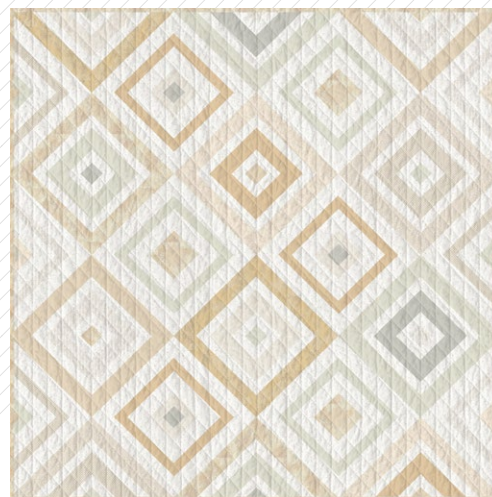
by AGF

XXXXXXXXXXXXXXXXXXXXXXXXXXXX

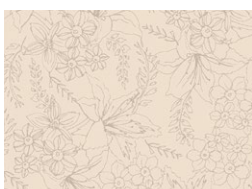
Quietude

QUILT DESIGNED BY AGFstudio

soften
THE volume



FABRICS DESIGNED BY AGF STUDIO



Fabric A
CAP-SV-11608
NATURAL BOUQUET



Fabric B
PE-419
LIGHT GREY



Fabric C
FE-522
COOKIE DOUGH



Fabric D
FE-504
SAND



Fabric E
CAP-SV-11606
SUNBLEACHED LEAVES



Fabric F
PE-432
SANDSTONE



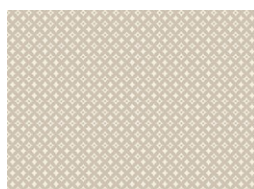
Fabric G
PE-486
VANILLA CUSTARD



Fabric H
PE-431
MYSTIC GREY



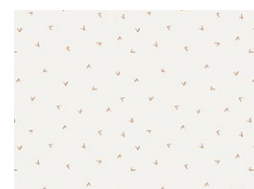
Fabric I
CAP-SV-11600
MOMENT OF ZEN



Fabric J
CAP-SV-11602
PETAL TRELLIS



Fabric K
CAP-SV-11604
BRUSHED FIBERS



Fabric L
CAP-SV-11605
FLYING SEEDS



Fabric M (BINDING)
FE-516
KHAKI



BACKING
CAP-SV-11600
MOMENT OF ZEN





FINISHED SIZE | 77½" x 77½"

FABRIC REQUIREMENTS

Fabric A	CAP-SV-11608	½ yd.
Fabric B	PE-419	⅞ yd.
Fabric C	FE-522	¾ yd.
Fabric D	FE-504	½ yd.
Fabric E	CAP-SV-11606	¾ yd.
Fabric F	PE-432	½ yd.
Fabric G	PE-486	½ yd.
Fabric H	PE-431	¾ yd.
Fabric I	CAP-SV-11600	¾ yd.
Fabric J	CAP-SV-11602	½ yd.
Fabric K	CAP-SV-11604	½ yd.
Fabric L	CAP-SV-11605	4⅛ yd.
Fabric M	FE-516	⅝ yd.

BACKING FABRIC
CAP-SV-11600 5yds (*Suggested*)

BINDING FABRIC
Fabric **M** FE-516 (*Included*)

CUTTING DIRECTIONS

¼" seam allowances are included.
WOF means width of fabric.

Fabric A

- Cut four (4) 3" x WOF strips; then,

Sub-cut:

- Four (4) 19" x 3" strips.
- Four (4) 14" x 3" strips.

- Cut two (2) 2" x WOF strips; then,

Sub-cut:

- Six (6) 6" x 2" strips.
- Six (6) 3" x 2" strips.

Fabric B

- Cut six (6) 3" x WOF strips; then,

Sub-cut:

- Four (4) 19" x 3" strips.
- Four (4) 14" x 3" strips.
- Four (4) 11" x 3" strips.
- Four (4) 6" x 3" strips.
- Seven (7) 3" squares.

- Cut five (5) 2" x WOF strips; then,

Sub-cut:

- Six (6) 14" x 2" strips.
- Six (6) 11" x 2" strips.
- Six (6) 6" x 2" strips.
- Six (6) 3" x 2" strips.

Fabric C

- Cut four (4) 3" x WOF strips; then,

Sub-cut:

- Four (4) 19" x 3" strips.
- Four (4) 14" x 3" strips.

XX

- ## Fabric H

- ## Fabric E

- ## Fabric I

- ## Fabric F

- ### Fabric J

- ## Fabric G

- ## Fabric K

Fabric L

- Cut thirty two (32) 3" x WOF strips; then,
Sub-cut:
 - Twenty-four (24) 19" x 3" strips.
 - Twenty-four (24) 14" x 3" strips.
 - Twenty-four (24) 11" x 3" strips.
 - Twenty-four (24) 6" x 3" strips.
- Cut twenty two (22) 2" x WOF strips; then,
Sub-cut:
 - Twenty-four (24) 14" x 2" strips.
 - Twenty-four (24) 11" x 2" strips.
 - Twenty-four (24) 6" x 2" strips.
 - Twenty-four (24) 3" x 2" strips.

Fabric M

- Cut eight (8) 2½" x WOF strips. (Binding)

CONSTRUCTION

Sew all rights sides together with ¼" seam allowance.

- This quilt is constructed using the log cabin technique.
- You will have ten (10) different blocks. Each one will measure 19" x 19".
- To assemble each block, follow the diagram below for each strip measurement placement.

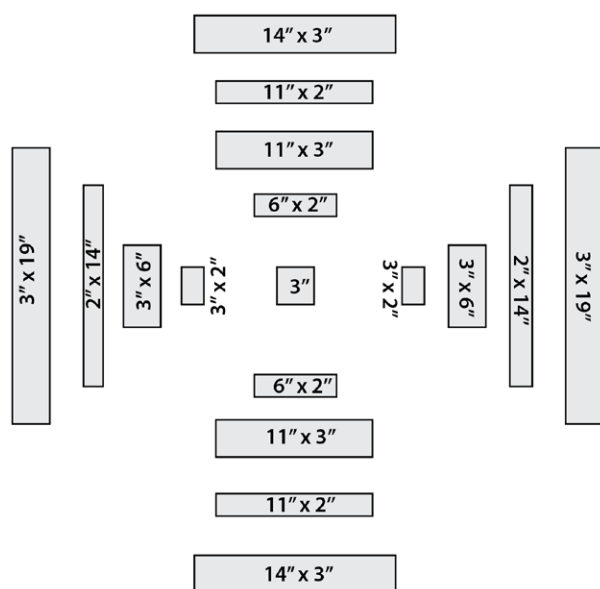


DIAGRAM 1

- Follow the steps below for each strip assembly to construct your block.

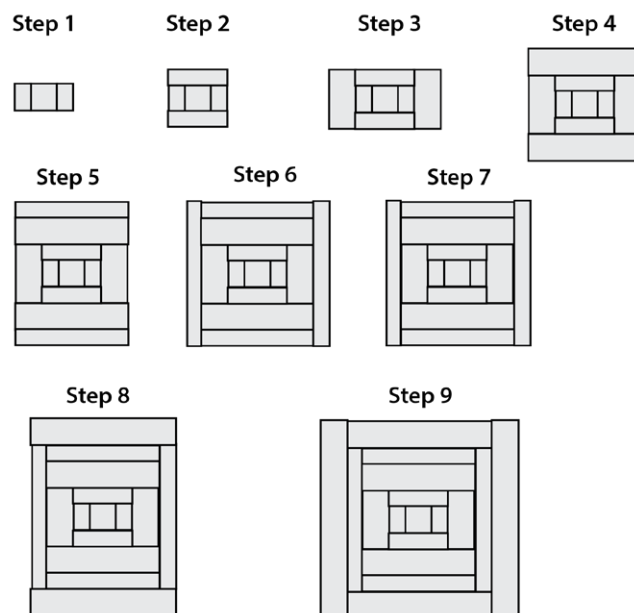


DIAGRAM 2

Block 1

To make two (2) blocks 1 take the following fabrics:

- Two (2) 3" squares from fabric **D**.
- Four (4) 3" x 2" rectangles from fabric **L**.
- Four (4) 6" x 2" rectangles from fabric **L**.
- Four (4) 6" x 3" rectangles from fabric **K**.
- Four (4) 11" x 3" rectangles from fabric **K**.
- Four (4) 11" x 2" rectangles from fabric **L**.
- Four (4) 14" x 2" rectangles from fabric **L**.
- Four (4) 14" x 3" rectangles from fabric **F**.
- Four (4) 19" x 3" rectangles from fabric **F**.

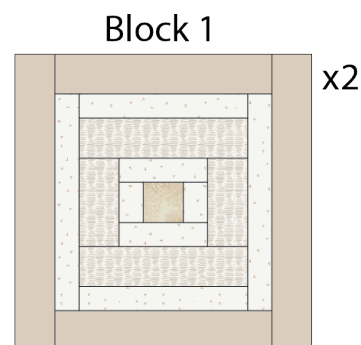


DIAGRAM 3

Block 2

To make three (3) blocks 2 take the following fabrics:

- Three (3) 3" squares from fabric **B**.
- Six (6) 3" x 2" rectangles from fabric **A**.
- Six (6) 6" x 2" rectangles from fabric **A**.
- Six (6) 6" x 3" rectangles from fabric **L**.
- Six (6) 11" x 3" rectangles from fabric **L**.
- Six (6) 11" x 2" rectangles from fabric **K**.
- Six (6) 14" x 2" rectangles from fabric **K**.
- Six (6) 14" x 3" rectangles from fabric **L**.
- Six (6) 19" x 3" rectangles from fabric **L**.

Block 2

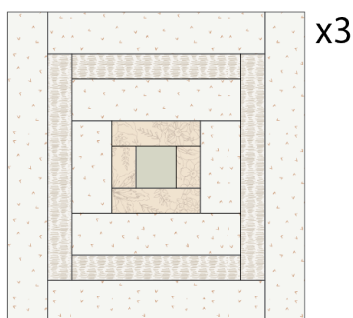


DIAGRAM 4

Block 3

To make two (2) blocks 3 take the following fabrics:

- Two (2) 3" squares from fabric **K**.
- Four (4) 3" x 2" rectangles from fabric **L**.
- Four (4) 6" x 2" rectangles from fabric **L**.
- Four (4) 6" x 3" rectangles from fabric **H**.
- Four (4) 11" x 3" rectangles from fabric **H**.
- Four (4) 11" x 2" rectangles from fabric **L**.
- Four (4) 14" x 2" rectangles from fabric **L**.
- Four (4) 14" x 3" rectangles from fabric **B**.
- Four (4) 19" x 3" rectangles from fabric **B**.

Block 3

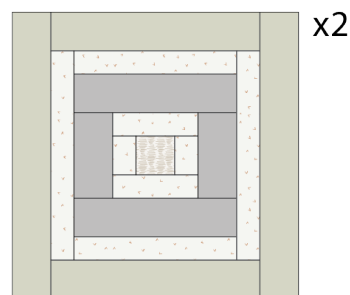


DIAGRAM 5

Block 4

To make three (3) blocks 4 take the following fabrics:

- Three (3) 3" squares from fabric **F**.
- Six (6) 3" x 2" rectangles from fabric **D**.
- Six (6) 6" x 2" rectangles from fabric **D**.
- Six (6) 6" x 3" rectangles from fabric **L**.
- Six (6) 11" x 3" rectangles from fabric **L**.
- Six (6) 11" x 2" rectangles from fabric **B**.
- Six (6) 14" x 2" rectangles from fabric **B**.
- Six (6) 14" x 3" rectangles from fabric **L**.
- Six (6) 19" x 3" rectangles from fabric **L**.

Block 4

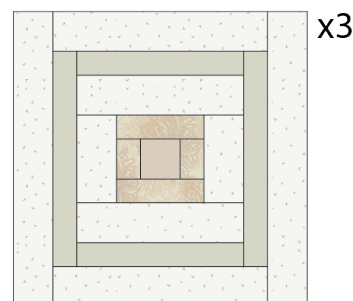


DIAGRAM 6

Block 5

To make two (2) blocks 5 take the following fabrics:

- Two (2) 3" squares from fabric **B**.
- Four (4) 3" x 2" rectangles from fabric **L**.
- Four (4) 6" x 2" rectangles from fabric **L**.
- Four (4) 6" x 3" rectangles from fabric **J**.
- Four (4) 11" x 3" rectangles from fabric **J**.
- Four (4) 11" x 2" rectangles from fabric **L**.
- Four (4) 14" x 2" rectangles from fabric **L**.
- Four (4) 14" x 3" rectangles from fabric **E**.
- Four (4) 19" x 3" rectangles from fabric **E**.

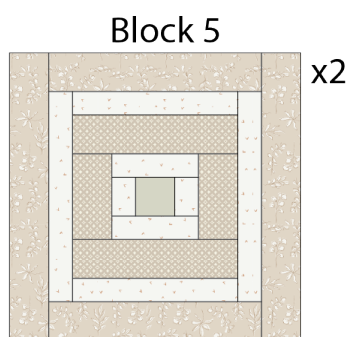


DIAGRAM 7

Block 6

To make three (3) blocks 6 take the following fabrics:

- Three (3) 3" squares from fabric **F**.
- Six (6) 3" x 2" rectangles from fabric **B**.
- Six (6) 6" x 2" rectangles from fabric **B**.
- Six (6) 6" x 3" rectangles from fabric **L**.
- Six (6) 11" x 3" rectangles from fabric **L**.
- Six (6) 11" x 2" rectangles from fabric **J**.
- Six (6) 14" x 2" rectangles from fabric **J**.
- Six (6) 14" x 3" rectangles from fabric **L**.
- Six (6) 19" x 3" rectangles from fabric **L**.

Block 6

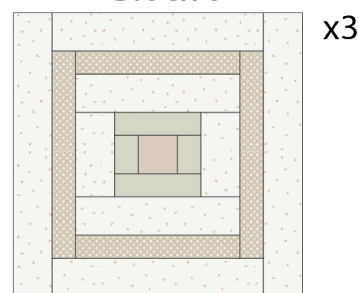


DIAGRAM 8

Block 7

To make two (2) blocks 7 take the following fabrics:

- Two (2) 3" squares from fabric **B**.
- Four (4) 3" x 2" rectangles from fabric **L**.
- Four (4) 6" x 2" rectangles from fabric **L**.
- Four (4) 6" x 3" rectangles from fabric **I**.
- Four (4) 11" x 3" rectangles from fabric **I**.
- Four (4) 11" x 2" rectangles from fabric **L**.
- Four (4) 14" x 2" rectangles from fabric **L**.
- Four (4) 14" x 3" rectangles from fabric **C**.
- Four (4) 19" x 3" rectangles from fabric **C**.

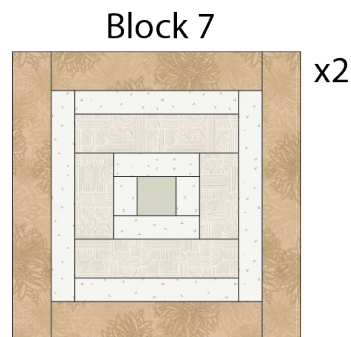


DIAGRAM 9

To make three (3) blocks 8 take the following fabrics:

- Three (3) 3" squares from fabric **H**.
- Six (6) 3" x 2" rectangles from fabric **I**.
- Six (6) 6" x 2" rectangles from fabric **I**.
- Six (6) 6" x 3" rectangles from fabric **L**.
- Six (6) 11" x 3" rectangles from fabric **L**.
- Six (6) 11" x 2" rectangles from fabric **G**.
- Six (6) 14" x 2" rectangles from fabric **G**.
- Six (6) 14" x 3" rectangles from fabric **L**.
- Six (6) 19" x 3" rectangles from fabric **L**.

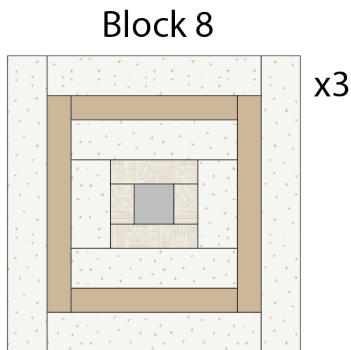


DIAGRAM 10

Block 9

To make two (2) blocks g take the following fabrics:

- Two (2) 3" squares from fabric **F**.
- Four (4) 3" x 2" rectangles from fabric **L**.
- Four (4) 6" x 2" rectangles from fabric **L**.
- Four (4) 6" x 3" rectangles from fabric **G**.
- Four (4) 11" x 3" rectangles from fabric **G**.
- Four (4) 11" x 2" rectangles from fabric **L**.
- Four (4) 14" x 2" rectangles from fabric **L**.
- Four (4) 14" x 3" rectangles from fabric **A**.
- Four (4) 19" x 3" rectangles from fabric **A**.

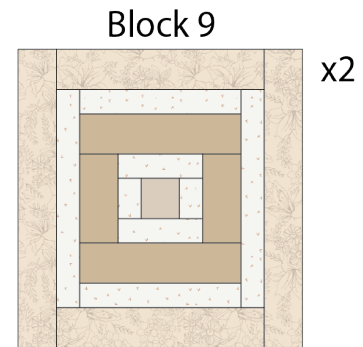


DIAGRAM 11

Block 10

To make two (2) blocks 10 take the following fabrics:

- Two (2) 3" squares from fabric **H**.
- Four (4) 3" x 2" rectangles from fabric **L**.
- Four (4) 6" x 2" rectangles from fabric **L**.
- Four (4) 6" x 2" rectangles from fabric **B**.
- Four (4) 11" x 3" rectangles from fabric **B**.
- Four (4) 11" x 2" rectangles from fabric **L**.
- Four (4) 14" x 2" rectangles from fabric **L**.
- Four (4) 14" x 3" rectangles from fabric **D**.
- Four (4) 19" x 3" rectangles from fabric **D**.

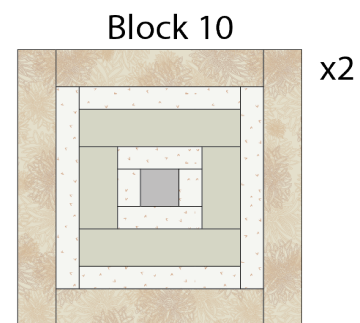


DIAGRAM 12

ASSEMBLING THE TOP

Sew all rights sides together with 1/4" seam allowance. Press open.

- Arrange all blocks into 6 rows using the diagram below for reference.

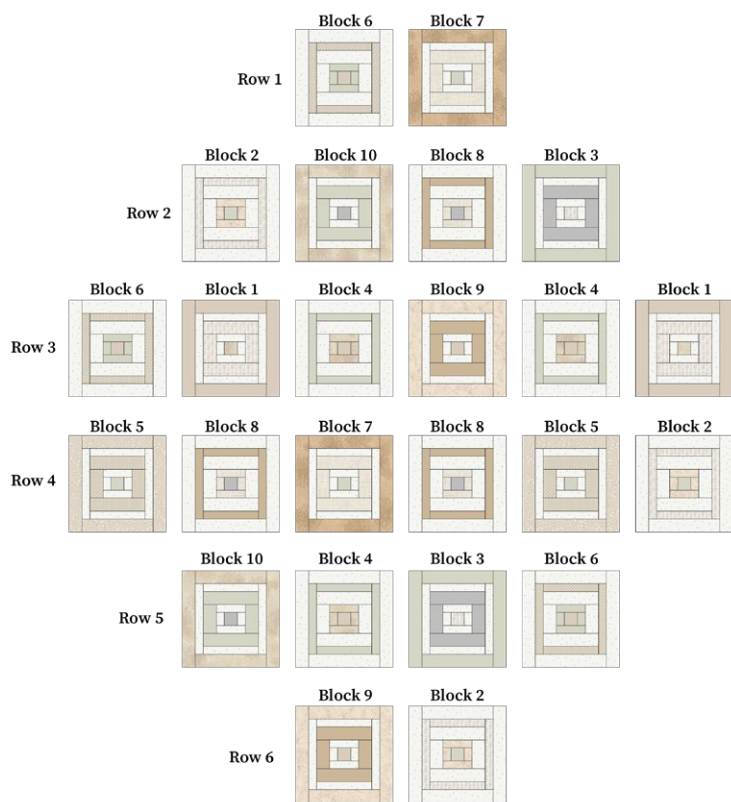


DIAGRAM 13

- Then, sew all rows together.

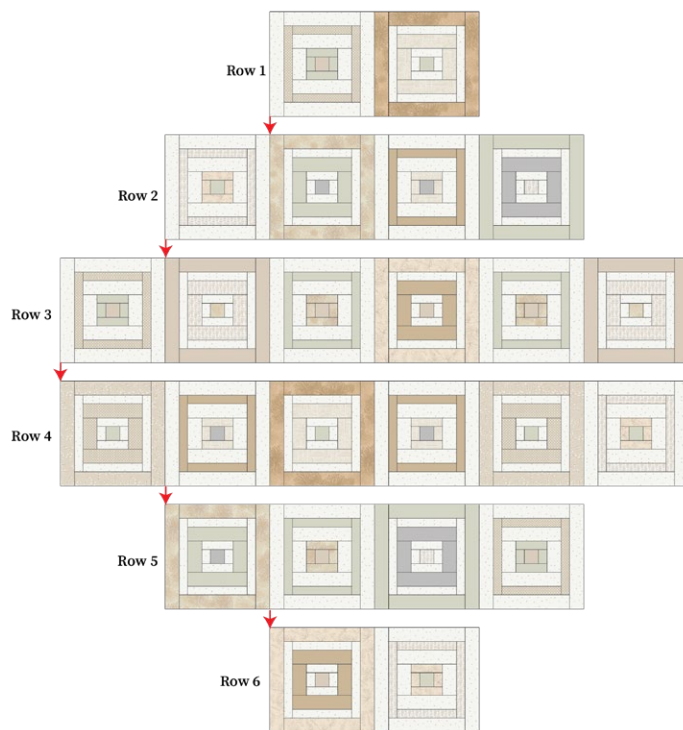


DIAGRAM 14

- Rotate the quilt top 45° degrees towards the left. See diagram below for reference.

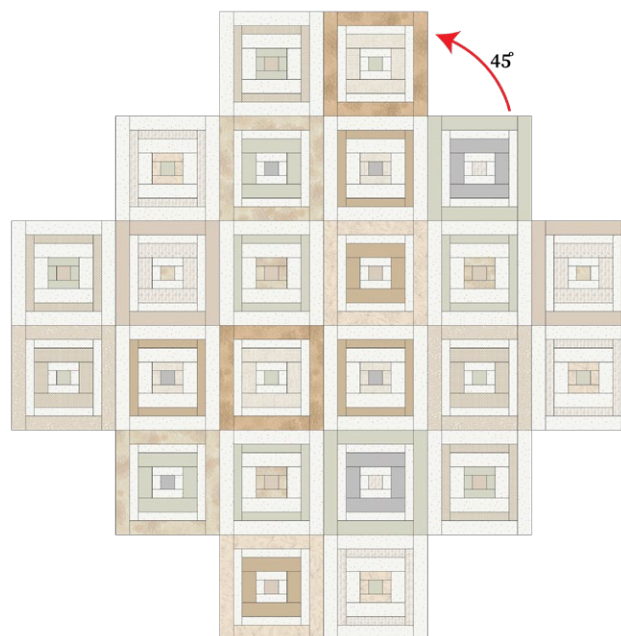


DIAGRAM 15

- Trim the quilt top to 77½" x 77½".



DIAGRAM 16

QUILT ASSEMBLY

Sew rights sides together.

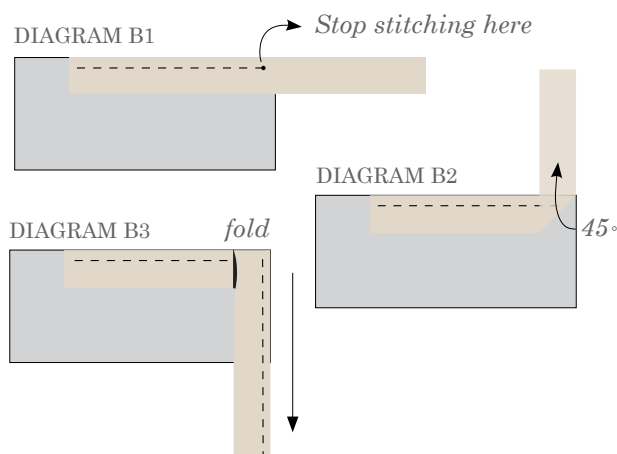
- Place BACKING FABRIC on a large surface wrong side up. Stretch it with masking tape against that surface.
- Place BATTING on top of backing fabric.
- Place TOP on top of the batting with right side facing up. Smooth away wrinkles using your hands.
- Pin all layers together and baste with basting thread, using long stitches. You can also use safety pins to join the layers.
- Machine or hand quilt starting at the center and working towards the corners. Remember that quilting motifs are a matter of personal preference. Have fun choosing yours!
- After you finished, trim excess of any fabric or batting, squaring the quilt to proceed to bind it.

BINDING

Sew rights sides together.

- Sew eight (8) 2½" x WOF strips from fabric **M** to make a final strip 320" long. Start sewing the binding strip in the middle of one of the sides of the quilt, placing the strip right side down and leaving an approximated 5" tail. Sew with ¼" seam allowance (using straight stitch), aligning the strip's raw edge with the quilt top's raw edge.
- Stop stitching ¼" before the edge of the quilt (DIAGRAM B 1). Clip the threads. Remove the quilt from under the machine presser foot. Fold the strip in a motion of 45° and upward, pressing with your fingers (DIAGRAM B2). Hold this fold with your finger, bring the strip down in line with the next edge, making a horizontal fold that aligns with the top edge of the quilt (DIAGRAM B3). Start sewing at ¼" of the border, stitching all the layers. Do the same in the four corners of the quilt.

- Stop stitching before you reach the last 5 or 6 inches. Cut the threads and remove the quilt from under the machine presser foot. Lay the loose ends of the binding flat along the quilt edge, folding the ends back on themselves where they meet. Press them together to form a crease. Using this crease as the stitching line, sew the two open ends of the binding with right sides together (you can help yourself marking with a pencil if the crease is difficult to see).
- Trim seam to ¼" and press open. Complete the sewing. Turn binding to back of the quilt, turn raw edge inside and stitch by hand using blind stitch.



- If you are using our 2.5 edition (binding fabric), click or scan this QR code to see a tutorial on how to use this specialty fabric.



XXXXXXXXXXXXXXXXXXXXXXXXXXXXXXXXXXXX

*Congratulations
& enjoy*

XXXXXXXXXXXXXXXXXXXXXXXXXXXXXXXXXXXX



artgalleryfabrics.com

NOTE: While all possible care has been taken to ensure the accuracy of this pattern, We are not responsible for printing errors or the way in which individual work varies.

Please read instructions carefully before starting the construction of this quilt. If desired, wash and iron your fabrics before starting to cut.

© 2025 Courtesy of Art Gallery Quilts LLC. All Rights Reserved.