

# Funfair





# PURR PARADE

QUILT DESIGNED BY AGFstudio

## Funfair

FABRICS DESIGNED BY AGF STUDIO



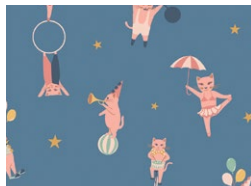
**Fabric A**

PE540  
COCONUT MILK



**Fabric B**

PRP54211  
CIRCUS TOWN



**Fabric C**

PRP54200  
PURRFECT PERFORMERS  
COOL



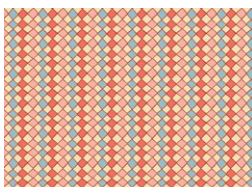
**Fabric D**

PRP54203  
SKY CELEBRATION



**Fabric E**

PRP44210  
MEOW IN THE CLOUDS



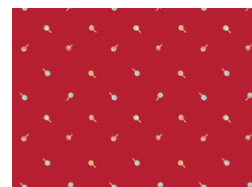
**Fabric F**

PRP54201  
HARLEQUIN JOY



**Fabric G**

PRP44207  
WHISKER DECK



**Fabric H**

PRP44204  
SWEET SWIRLS



**Fabric I**

PRP54206  
PURRFECTLY CLOWNISH  
SUN



**Fabric J**

PRP44206  
PURRFECTLY CLOWNISH  
BLUSH



**Fabric K**

PE545  
MORNING FROST



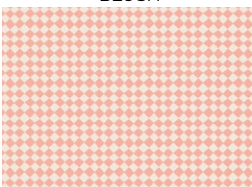
**Fabric L**

PRP54208  
FESTIVAL DOTS



**Fabric M**

PRP44200  
PURRFECT PERFORMERS  
WARM



**Fabric N**

PRP44201  
HARLEQUIN SWEET



**Fabric O**

PE450  
GRAPEFRUIT



**Fabric P (Binding)**

BINPRP44  
CIRCUS BOUND



**Backing**

PRP44202  
FESTIVAL WONDERS





FINISHED SIZE | 90½" x 90½"

## FABRIC REQUIREMENTS

Fabric <b>A</b>	PE540	4 yd.
Fabric <b>B</b>	PRP54211	½ yd.
Fabric <b>C</b>	PRP54200	¾ yd.
Fabric <b>D</b>	PRP54203	¾ yd.
Fabric <b>E</b>	PRP44210	¾ yd.
Fabric <b>F</b>	PRP54201	⅝ yd.
Fabric <b>G</b>	PRP44207	½ yd.
Fabric <b>H</b>	PRP44204	⅞ yd.
Fabric <b>I</b>	PRP54206	¼ yd.
Fabric <b>J</b>	PRP44206	¼ yd.
Fabric <b>K</b>	PE545	⅞ yd.
Fabric <b>L</b>	PRP54208	¼ yd.
Fabric <b>M</b>	PRP44200	¾ yd.
Fabric <b>N</b>	PRP44201	½ yd.
Fabric <b>O</b>	PE450	1¾ yd.
Fabric <b>P</b>	BINPRP44	¾ yd.

BACKING FABRIC  
PRP44202 8½ yds *(Suggested)*

BINDING FABRIC

Fabric **P** PE496 ¾ yd. *(Included)*

## CUTTING DIRECTIONS

¼" seam allowances are included.  
WOF means width of fabric.

### Fabric A

- Cut 2 (two) 38" x 40½" rectangles.
- Cut 2 (two) 8" x 40½" rectangles.
- Cut 2 (two) 16½ x 22½" rectangles.
- Cut 2 (two) 5½ x 15½" rectangles.
- Cut 2 (two) 3½ x 15½" rectangles.
- Cut 2 (two) 3½ x 10½" rectangles.
- Cut 2 (two) 3½ x 5½" rectangles.
- Cut 4 (four) 4½" x 16½" rectangles.
- Cut 2 (two) 5½" squares.

### Fabric B

- Cut 3 (three) 5½" x WOF strips, then;  
-Sub-cut into 18 (eighteen) 5½" squares (Fussy Cut).

### Fabric C

- Cut 4 (four) 5½" x WOF strips, then;  
-Sub-cut into 12 (twelve) 5½" squares. (Fussy Cut)  
2 (two) 25½" x 5½" rectangles.
- Cut 1 (one) Template 7 and 8.

### Fabric D

- Cut 2 (two) 5½" x WOF strips, then;  
-Sub-cut into 8 (eight) 5½" squares.

### Fabric E

- Cut 2 (two) Template 9.

### Fabric F

- Cut 2 (two)  $5\frac{1}{2}$ " x WOF strips, then;
  - Sub-cut into 12 (twelve)  $5\frac{1}{2}$ " squares.
- Cut 2 (two)  $3\frac{1}{2}$ " x  $2\frac{5}{8}$ " strips.

## Fabric G

- Cut 2 (two) 5½" x WOF strips, then;  
-Sub-cut into 6 (six) 5½" squares. (Fussy Cut).
- Cut 2 (two) 3½" x 35½" strips. (Fussy Cut).

## Fabric H

- Cut 1 (one)  $5\frac{1}{2}$ " x WOF strip, then:  
-Sub-cut into 5 (five)  $5\frac{1}{2}$ " squares.
- Cut 2 (two)  $3\frac{1}{2}$ " x  $30\frac{1}{2}$ " strips.
- Cut 4 (four) 3" x WOF strips, then;  
-Sub-cut into 56 (fifty six) 3" squares.
- Cut 3 (three)  $1\frac{1}{4}$ " x WOF strips, then;  
-Sub-cut into 6 (six)  $1\frac{1}{4}$ " x  $19\frac{1}{4}$ " strips.
- Cut Templates 6,10, 11,12,13,14,15 and 1.1a.

## Fabric I

- Cut 1 (one) 5½" x WOF strip, then:

Sub-cut into 4 (four) 5½" squares.

### Fabric J

- Cut 1 (one)  $5\frac{1}{2}$ " x WOF strip, then:
  - Sub-cut into 4 (four)  $5\frac{1}{2}$ " squares.

## Fabric K

- Cut Templates 1,2,3,4,5,10,11,12,13,14,15 and 1.1a.

## Fabric L

- Cut 1 (one)  $5\frac{1}{2}$ " x WOF strip, then:
  - Sub-cut into 6 (six)  $5\frac{1}{2}$ " squares.

### Fabric M

- Cut 1 (one) 5½" x WOF strip, then:
  - Sub-cut into 6 (six) 5½" squares (Fussy Cut).

## Fabric N

- Cut 3 (one)  $4\frac{1}{2}$ " x WOF strip, then:
  - Sub-cut into 5 (five)  $4\frac{1}{2}$ "x  $16\frac{1}{2}$ " strips.

## Fabric O

- Cut 20 (twenty) 3" x WOF strips, then;
  - Sub-cut into 272 (two hundred and seventy two) 3" squares.

## Fabric P

- Cut 9 (nine) 2½" x WOF strips. **(Binding)**

## CONSTRUCTION

*Sew all rights sides together with ¼" seam allowance.*

- Start by placing 1 (one) 3" squares from fabric **H** at the left top corner of a 5½" square from fabric **B**.
- Sew diagonally, trim ¼" away from seam allowance and press open.
- Place another 3" square from fabric **H** to the top right corner of the same 5½" square from fabric **B**, sew diagonally, trim ¼" away from seam allowance and press open.
- Keep repeating the same steps with the other 2 (two) 3" squares from fabric **H** at the two bottom corners of the 5½" square from fabric **B**.
- You need a total of fourteen (14) corner blocks.ST:

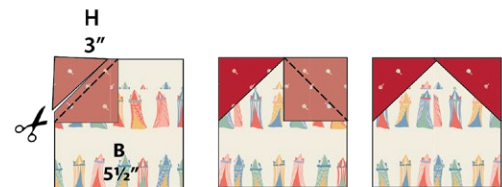


DIAGRAM 1



- Repeat the same steps with fabrics **B,C,D,F,G,H,I,J,L,M** 5½" squares, and 3" squares from fabric **O**.

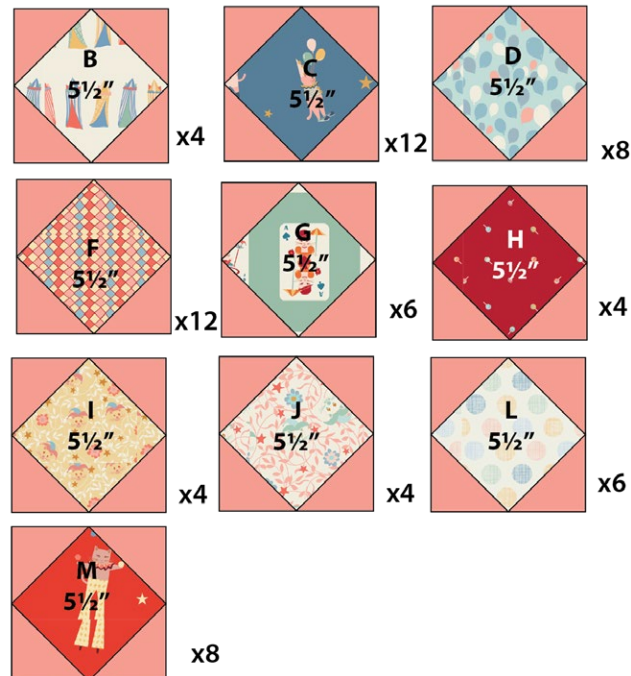


DIAGRAM 2

- Sew all **H-B** blocks in one row.

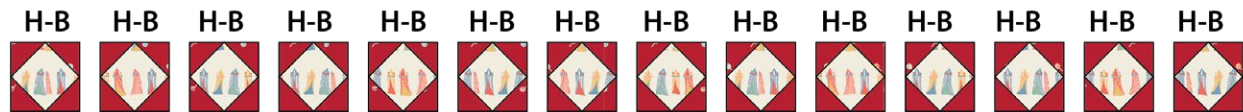


DIAGRAM 3

- Join 5 (five) 4½" x 16½" rectangles from fabric **N** with 4 (four) 4½" x 16½" rectangles from fabric **A**.
- See diagram below for reference.

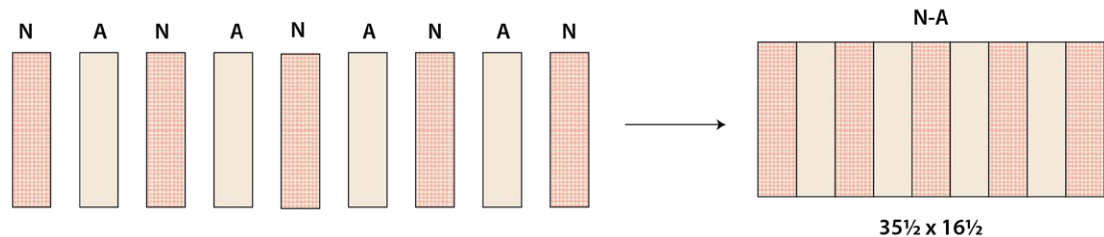


DIAGRAM 4

- Join 2 (two) 3½" x 25½" strips from fabric **F**. You should end up with a 3½" x 50½" strip.
- See diagram below for reference.

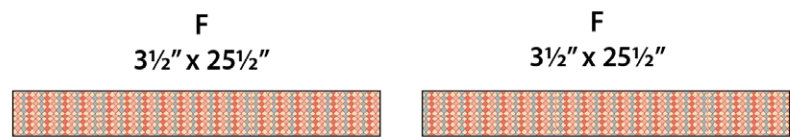


DIAGRAM 5



- Arrange all pieces together, as shown on diagram below.

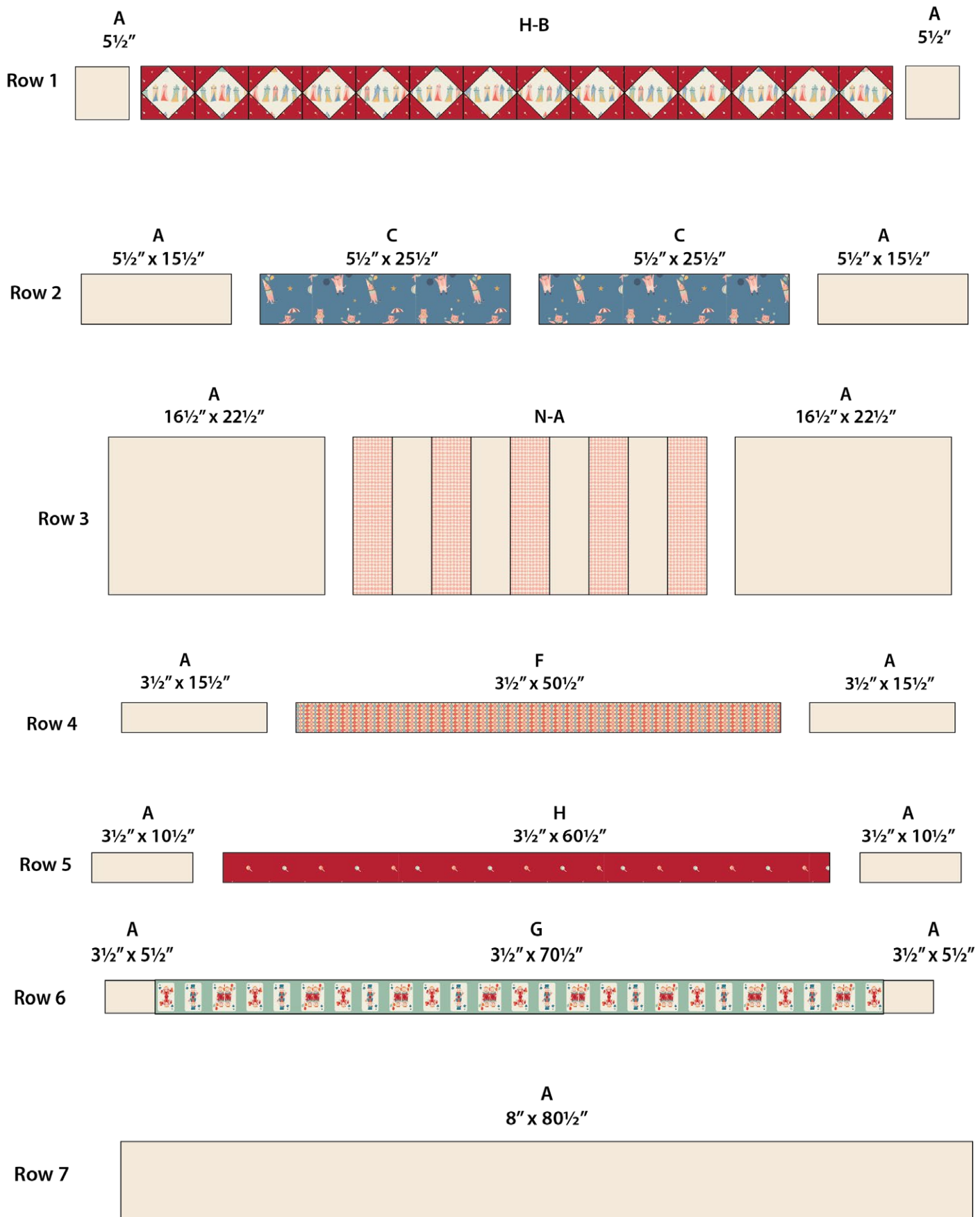


DIAGRAM 10

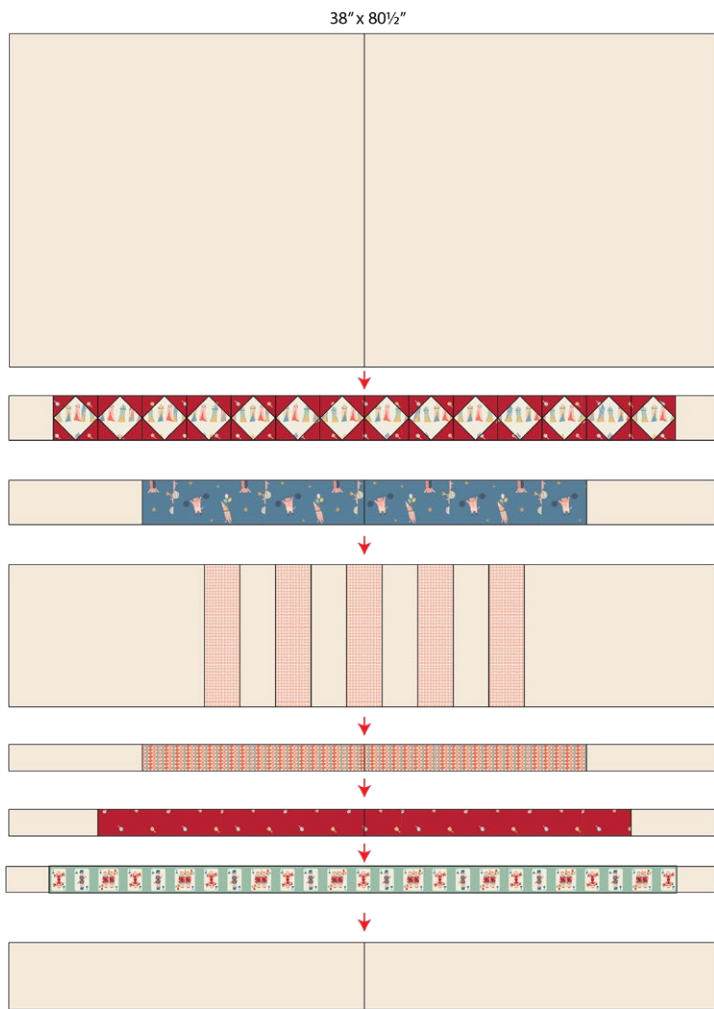


DIAGRAM 11

- Strip 1
- Arrange blocks as shown on diagram below.
- Make a total of 2 (two).

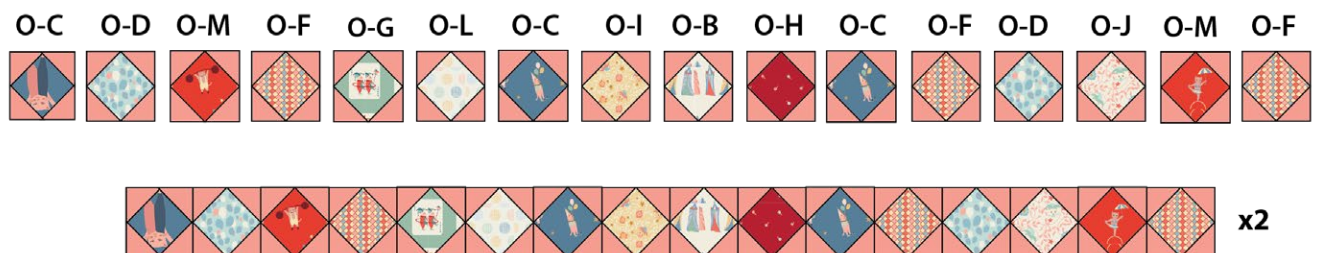


DIAGRAM 12



- Strip 2
- Arrange blocks as shown on diagram below.
- Make a total of 2 (two).

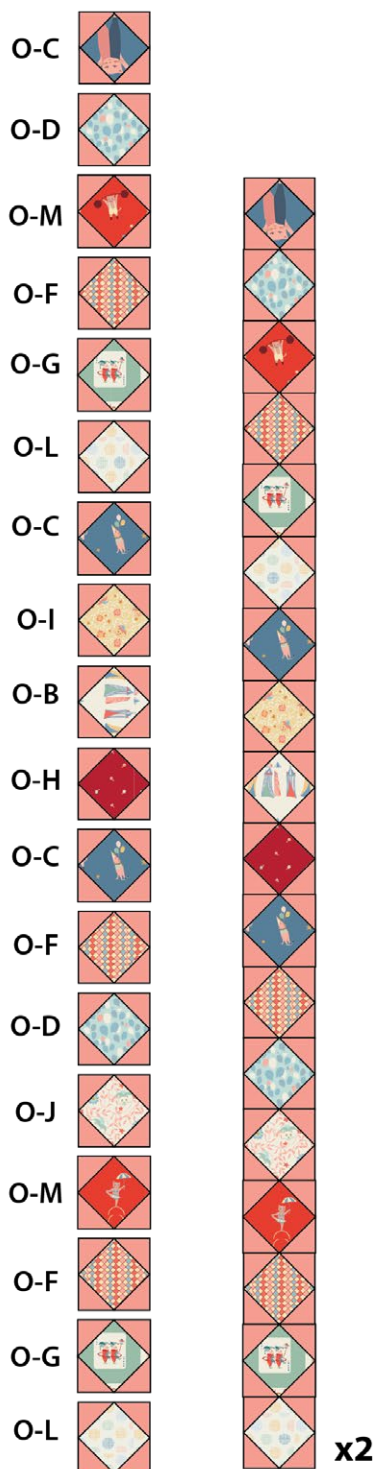


DIAGRAM 13

- Sew 1 (one) strip 1 to the top and the other to the bottom. Pay attention to the direction of the strip block **O-C** is located to the left in the top strip, and in the bottom strip **O-C** is located to the right.

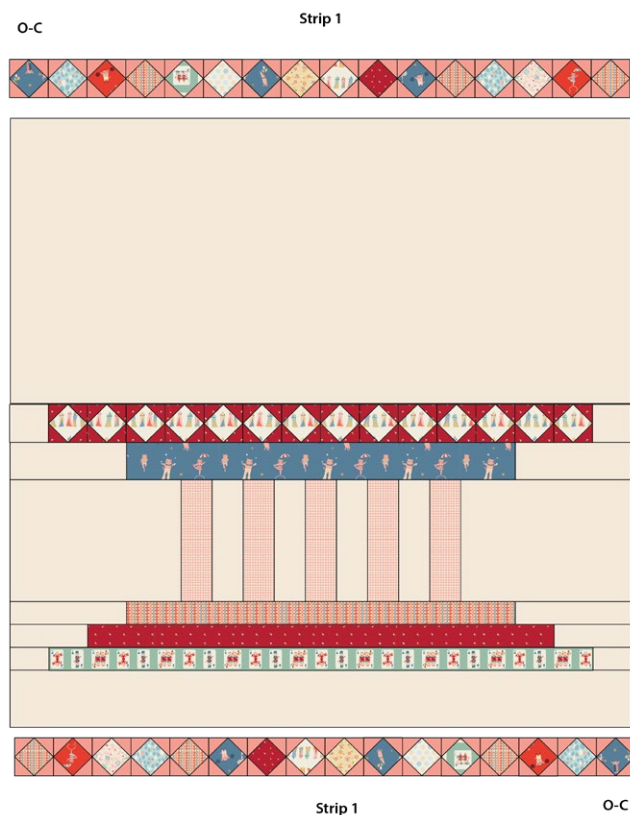


DIAGRAM 14

- Sew 1 (one) strip 2 on each side pay attention to the direction of the strip. In the left side block **O-C** is located at the bottom and on the right side is located at the top

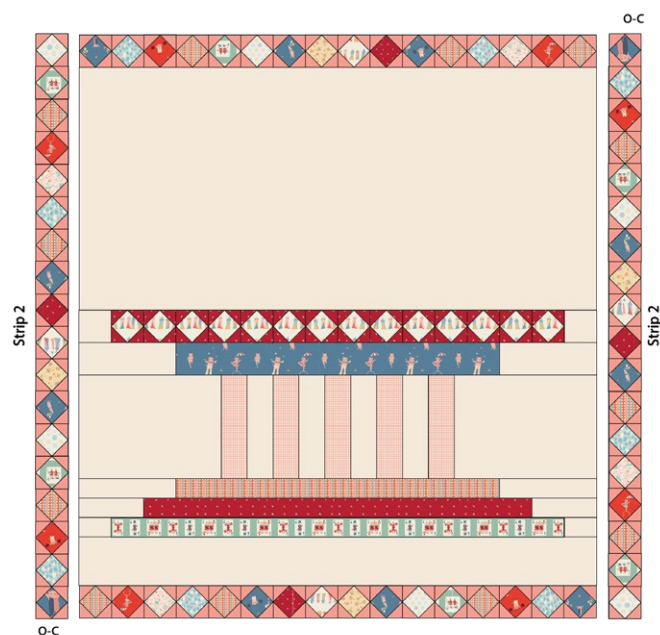


DIAGRAM 15

- Now that the quilt top is done, it is time to add the appliques.
- Measure 3" from the bottom left side edge of fabric **F**, and using Steam a Seam applique 1 (one)  $1\frac{1}{4}$ " x  $19\frac{1}{4}$ " strips from fabric **H**.
- Measure 3" from the bottom right side edge of fabric **F**, and using and applique 1 (one)  $1\frac{1}{4}$ " x  $19\frac{1}{4}$ " strips from fabric **H**.
- Measure  $1\frac{1}{2}$ " from both sides of each  $4\frac{1}{2}$ " x  $16\frac{1}{2}$ " rectangles from fabric **N** and applique 1 (one)  $1\frac{1}{4}$ " x  $19\frac{1}{4}$ " strips from fabric **H** using steam a seam .

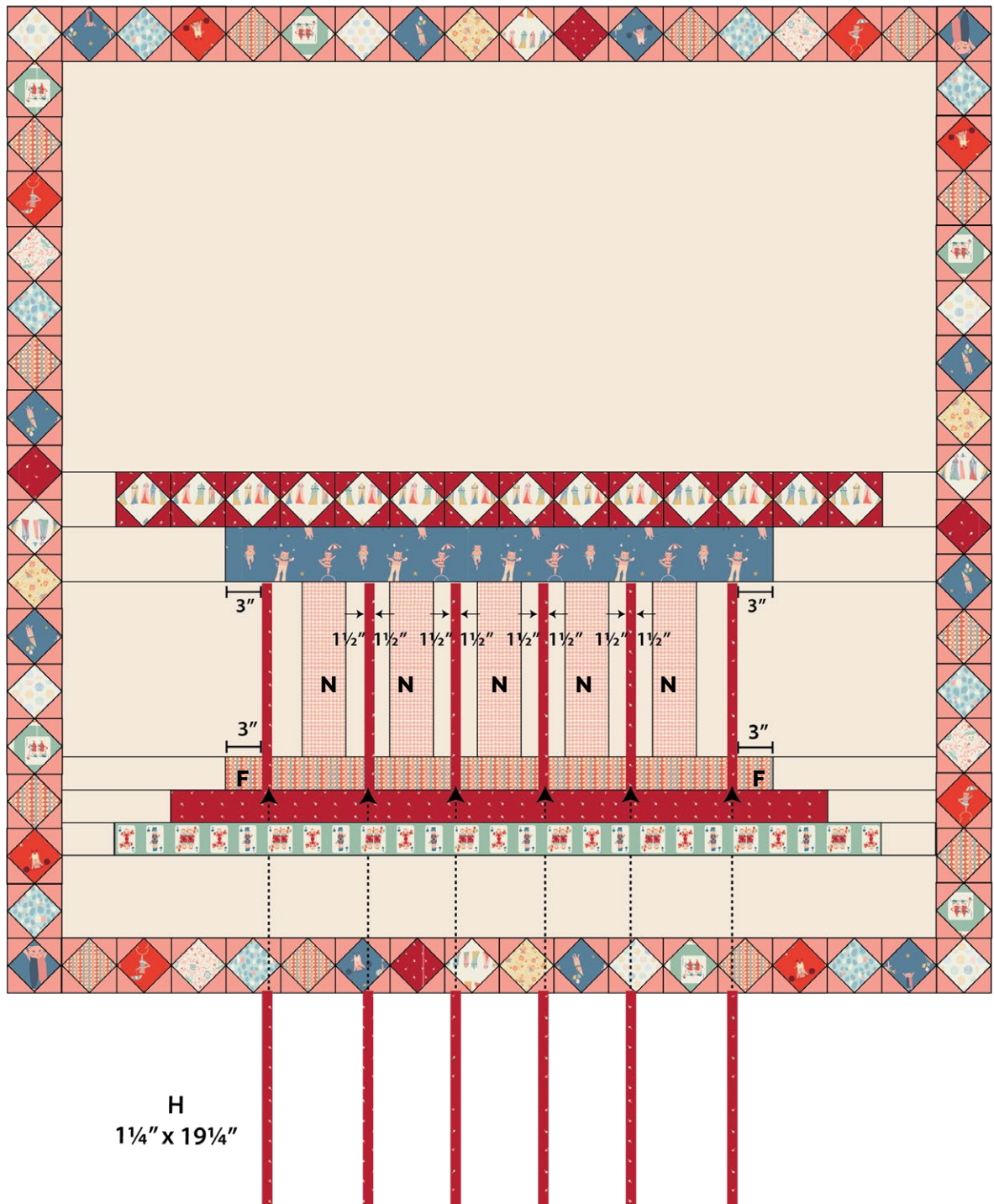


DIAGRAM 16



## QUILT TOP

- Using steam a seam place Template 1,2,3,4, and 5 to shape the top of the carrusel, then place templates 6,7 and 8 to finish the top.
- See diagram for template location.

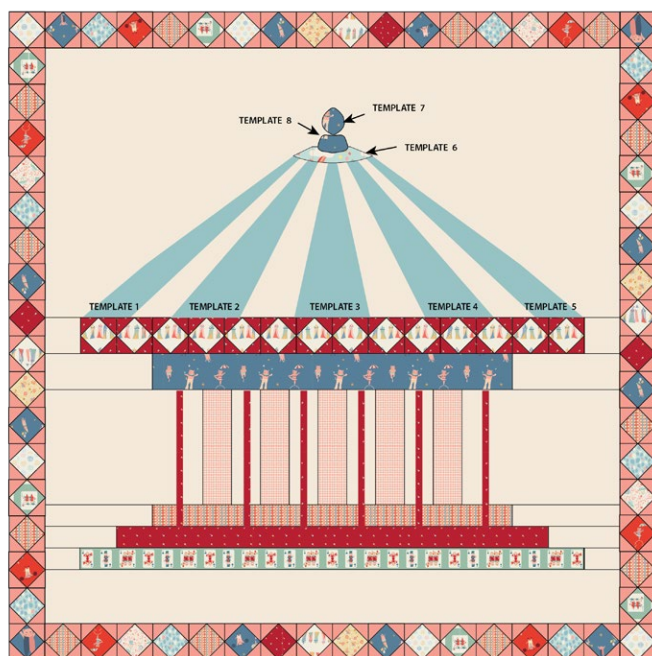
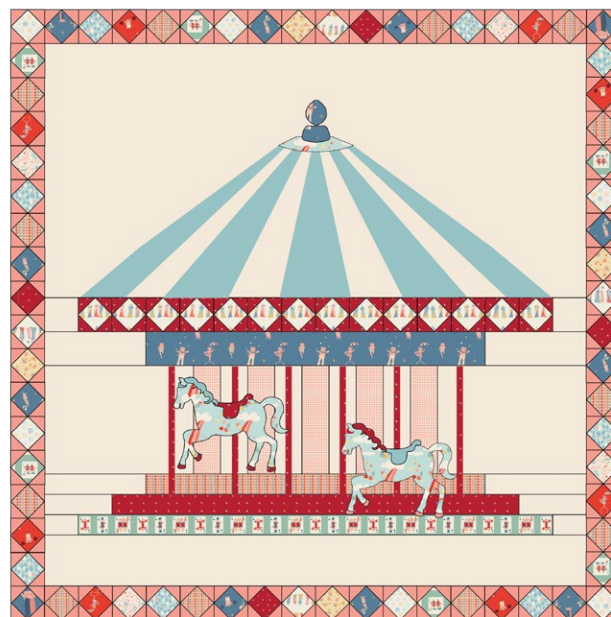


DIAGRAM 17



- Using steam a seam place Templates 9- 15 on both color combos.
- See diagram for template location.

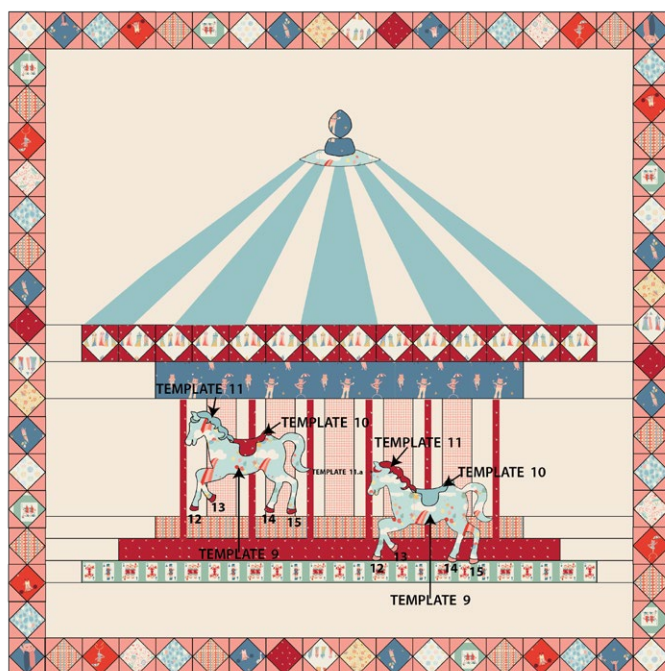


DIAGRAM 18



## QUILT ASSEMBLY

*Sew rights sides together.*

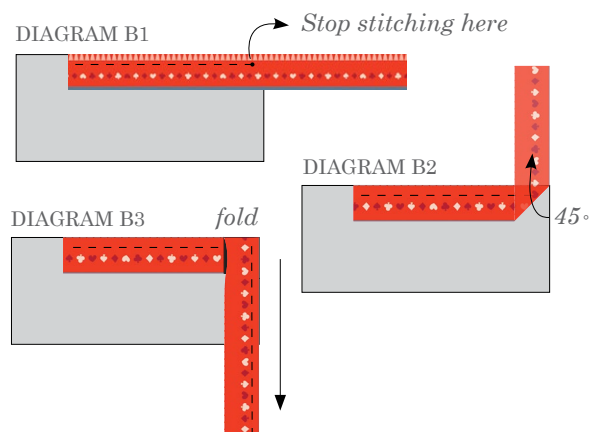
- Place BACKING FABRIC on a large surface wrong side up. Stretch it with masking tape against that surface.
- Place BATTING on top of backing fabric.
- Place TOP on top of the batting with right side facing up. Smooth away wrinkles using your hands.
- Pin all layers together and baste with basting thread, using long stitches. You can also use safety pins to join the layers.
- Machine or hand quilt starting at the center and working towards the corners. Remember that quilting motifs are a matter of personal preference. Have fun choosing yours!
- After you finished, trim excess of any fabric or batting, squaring the quilt to proceed to bind it.

## BINDING

*Sew rights sides together.*

- Cut enough strips  $2\frac{1}{2}$ " wide by the width of the fabric **P** to make a final strip 372" long. Start sewing the binding strip in the middle of one of the sides of the quilt, placing the strip right side down and leaving an approximated 5" tail. Sew with  $\frac{1}{4}$ " seam allowance (using straight stitch), aligning the strip's raw edge with the quilt top's raw edge.
- Stop stitching  $\frac{1}{4}$ " before the edge of the quilt (DIAGRAM B 1). Clip the threads. Remove the quilt from under the machine presser foot. Fold the strip in a motion of  $45^\circ$  and upward, pressing with your fingers (DIAGRAM B2). Hold this fold with your finger, bring the strip down in line with the next edge, making a horizontal fold that aligns with the top edge of the quilt (DIAGRAM B3). Start sewing at  $\frac{1}{4}$ " of the border, stitching all the layers. Do the same in the four corners of the quilt.

- Stop stitching before you reach the last 5 or 6 inches. Cut the threads and remove the quilt from under the machine presser foot. Lay the loose ends of the binding flat along the quilt edge, folding the ends back on themselves where they meet. Press them together to form a crease. Using this crease as the stitching line, sew the two open ends of the binding with right sides together (you can help yourself marking with a pencil if the crease is difficult to see).
- Trim seam to  $\frac{1}{4}$ " and press open. Complete the sewing. Turn binding to back of the quilt, turn raw edge inside and stitch by hand using blind stitch.
- If you are using our 2.5 edition (binding fabric), click or scan this QR code to see a tutorial on how to use this specialty fabric.



XXXXXXXXXXXXXXXXXXXXXXXXXXXXXXXXXXXX

*Congratulations  
& enjoy*

XXXXXXXXXXXXXXXXXXXXXXXXXXXXXXXXXXXX



[artgalleryfabrics.com](http://artgalleryfabrics.com)

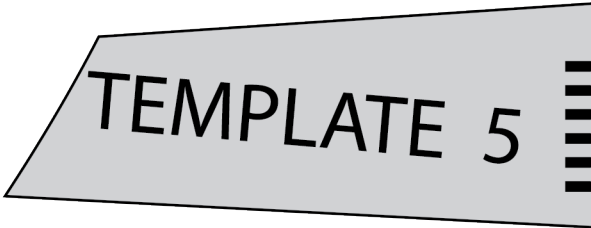
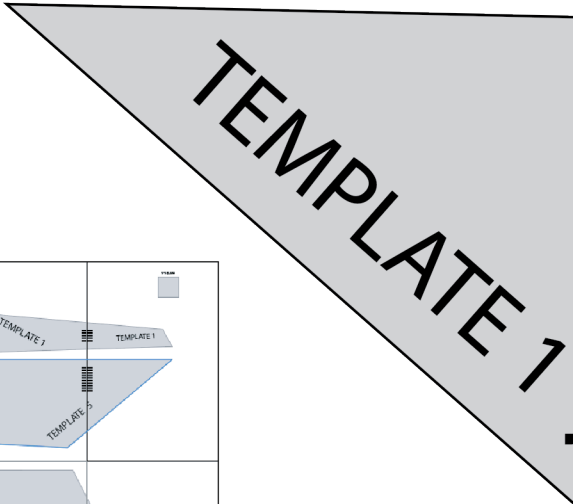
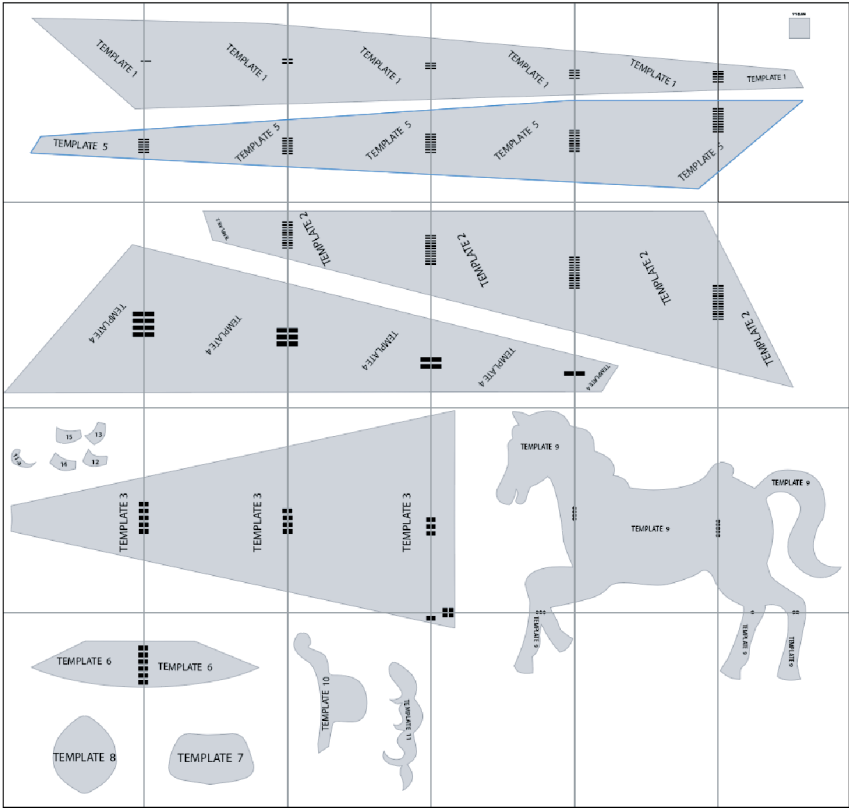
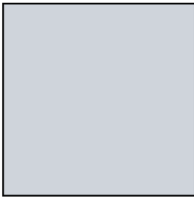
NOTE: While all possible care has been taken to ensure the accuracy of this pattern, We are not responsible for printing errors or the way in which individual work varies.

Please read instructions carefully before starting the construction of this quilt. If desired, wash and iron your fabrics before starting to cut.

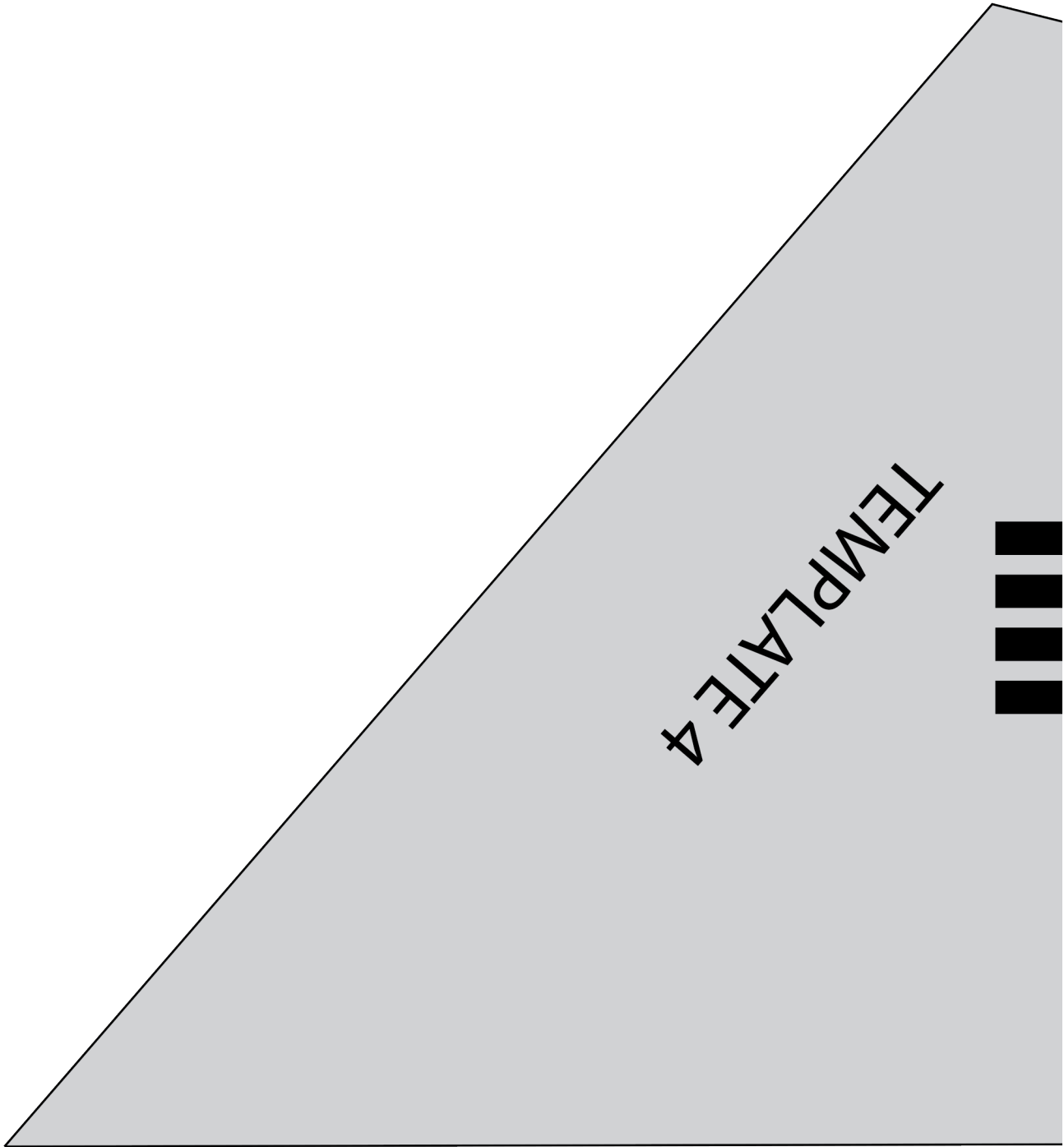
© 2025 Courtesy of Art Gallery Quilts LLC. All Rights Reserved.

TEMPLATES

1" Square





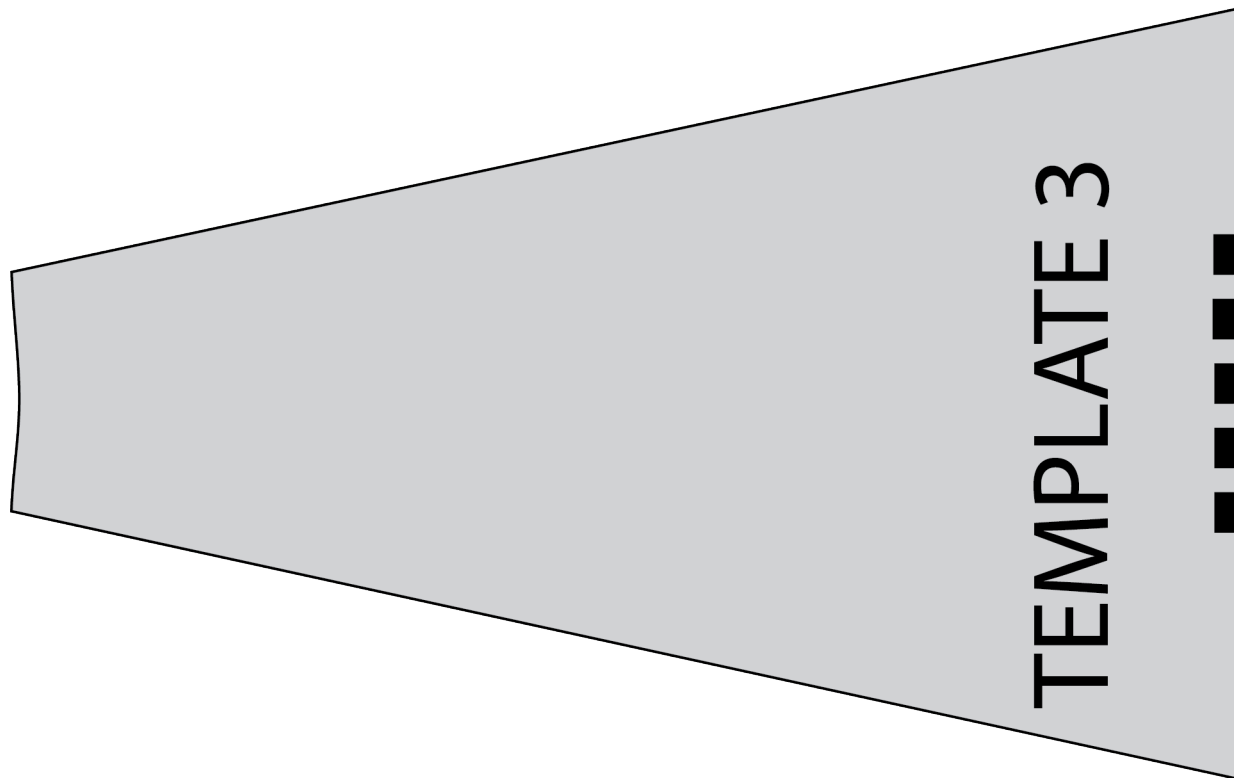
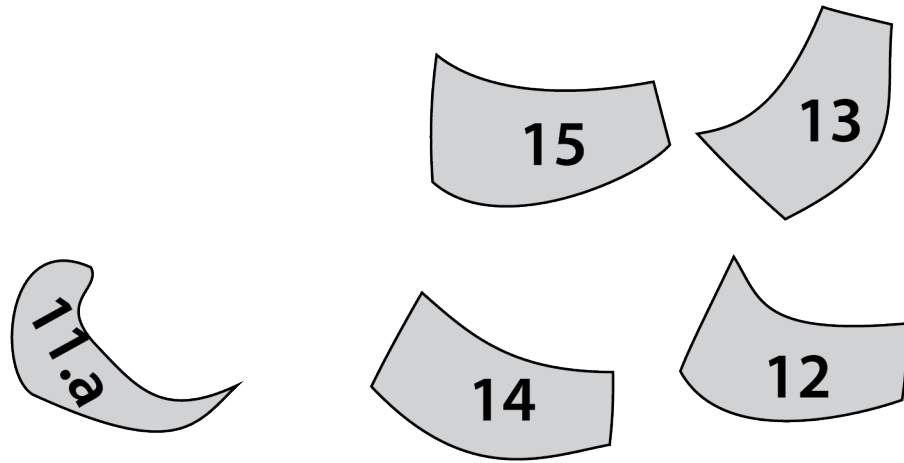


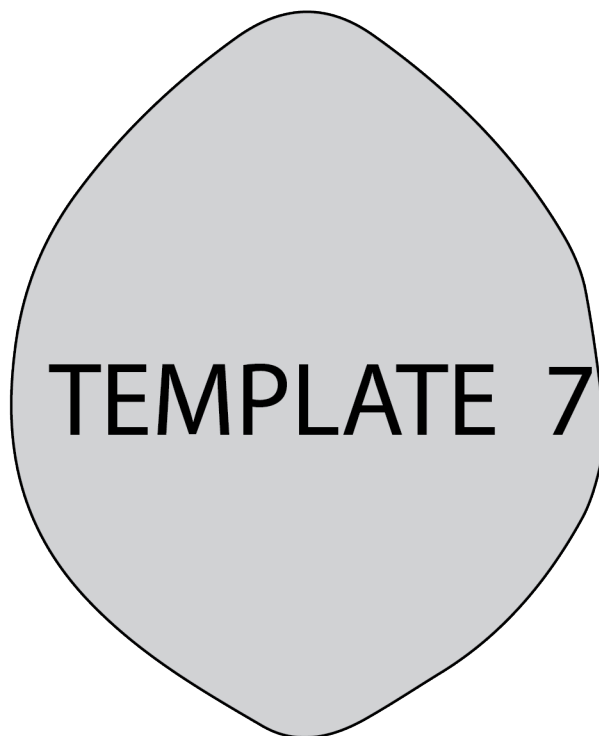
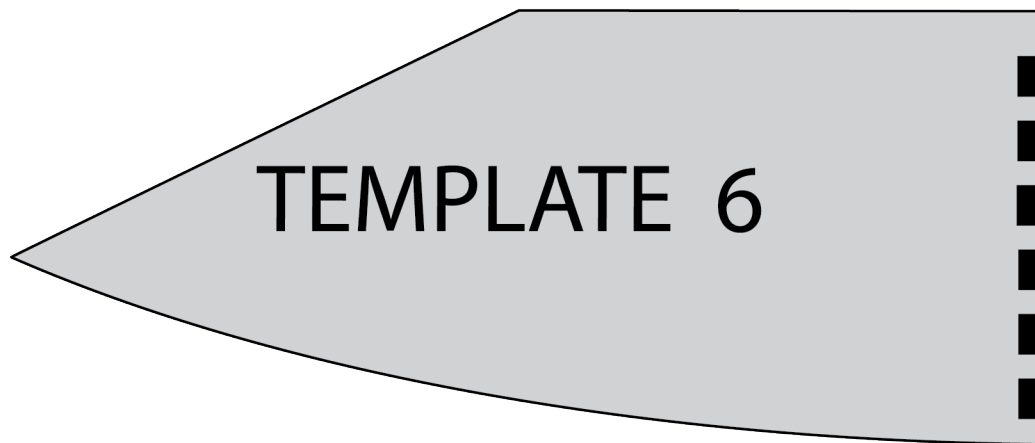
TEMPLATE 4



7







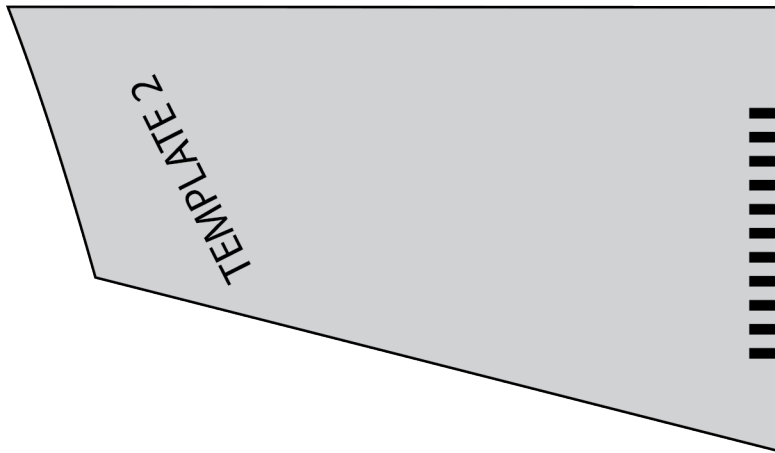


TEMPLATE 1

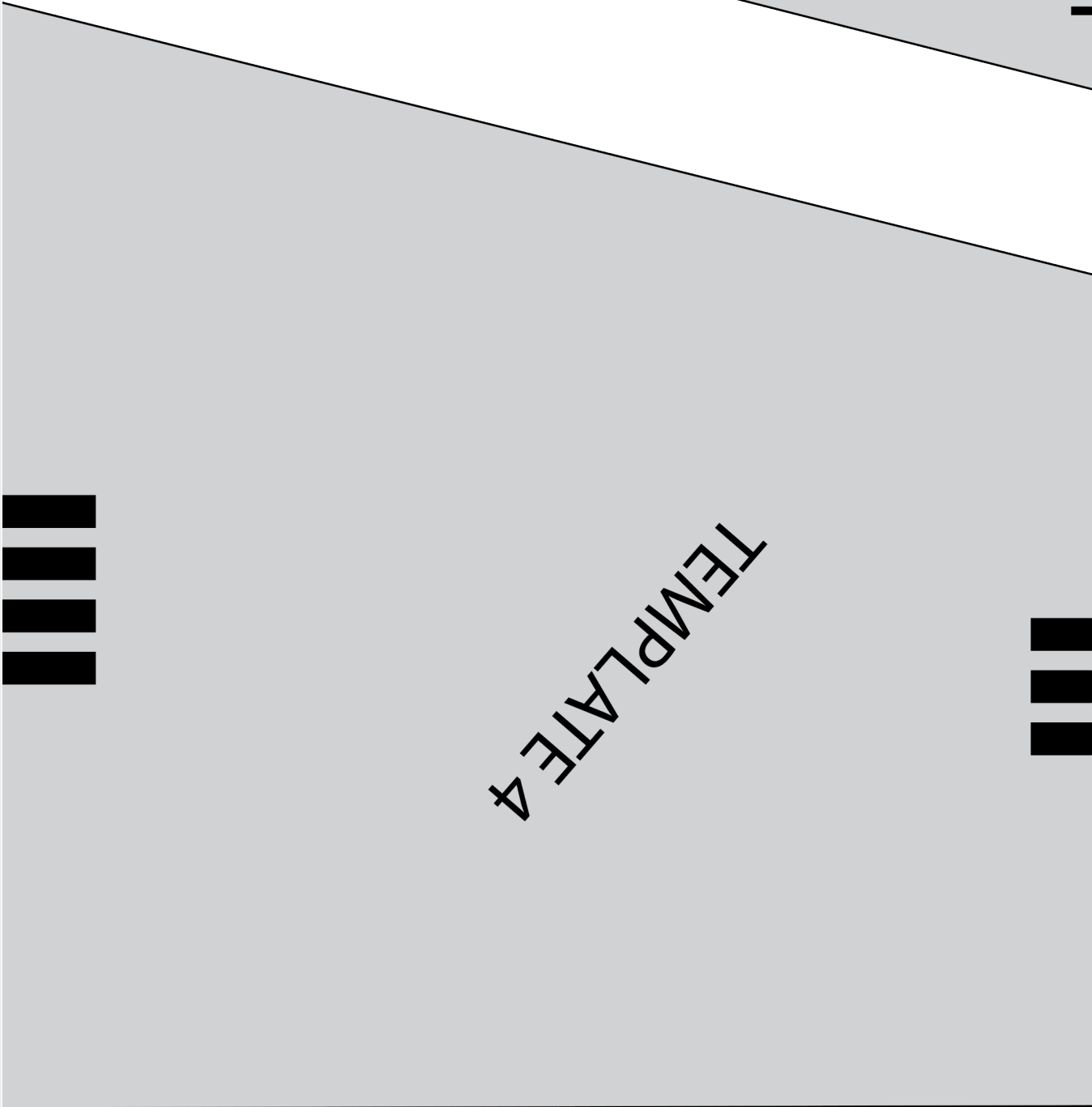
TEMPLATE 5



3



TEMPLATE 4

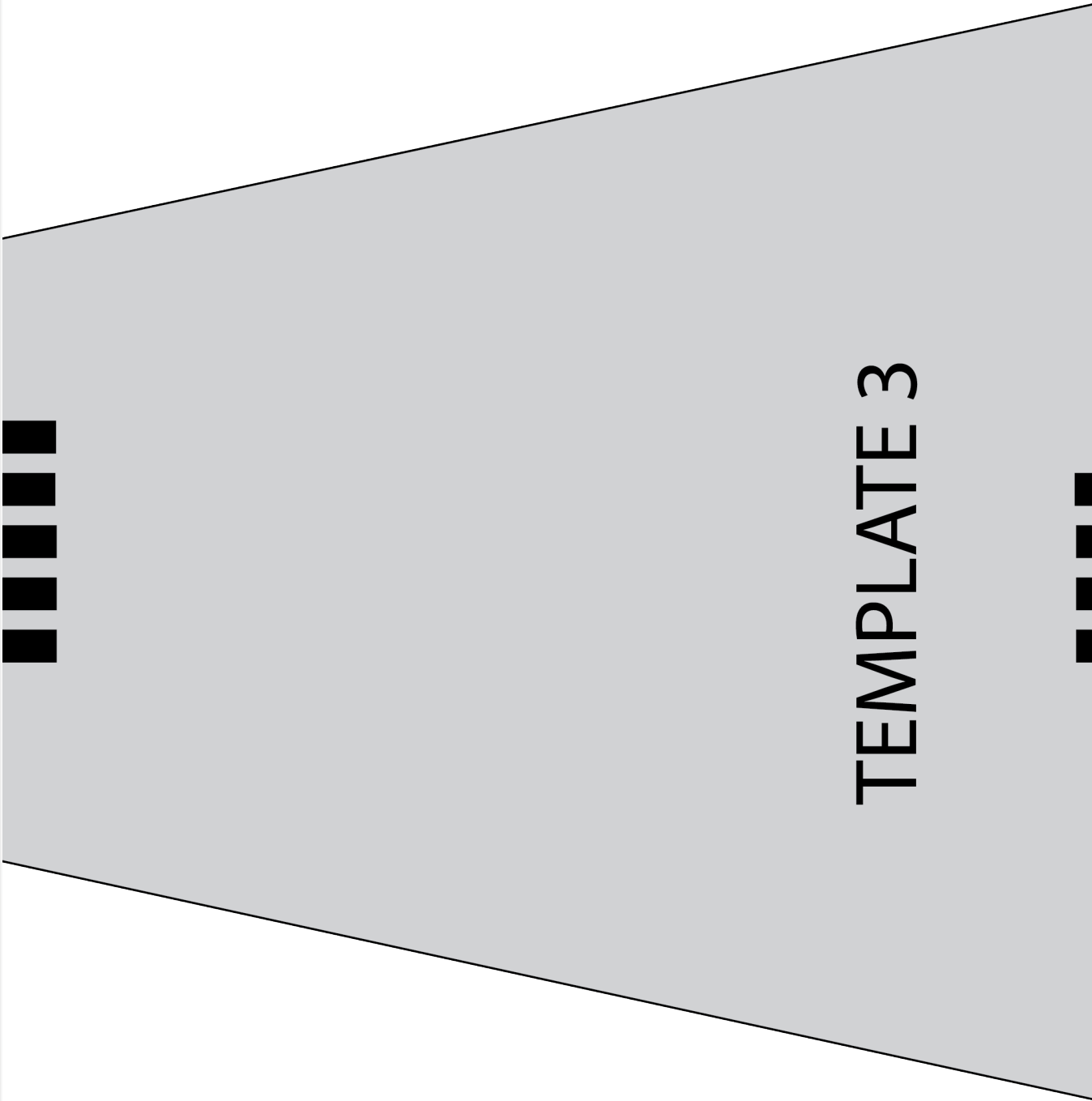


8





xxxxxxxxxxxxxxxxxxxxxxxxxxxxxxxx



TEMPLATE 3



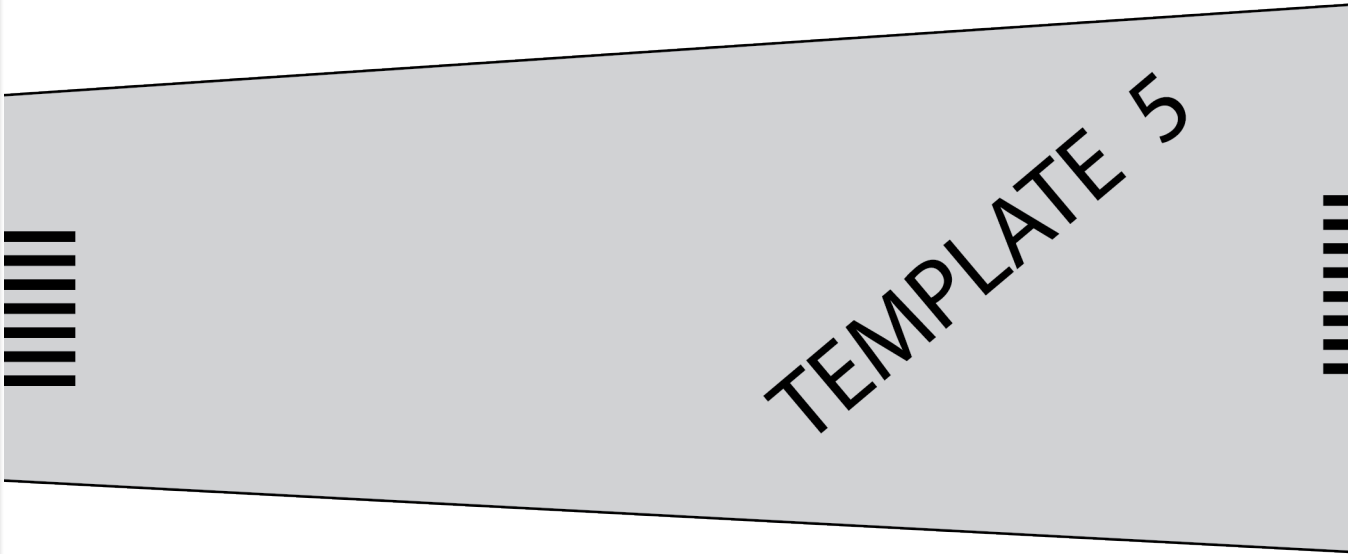
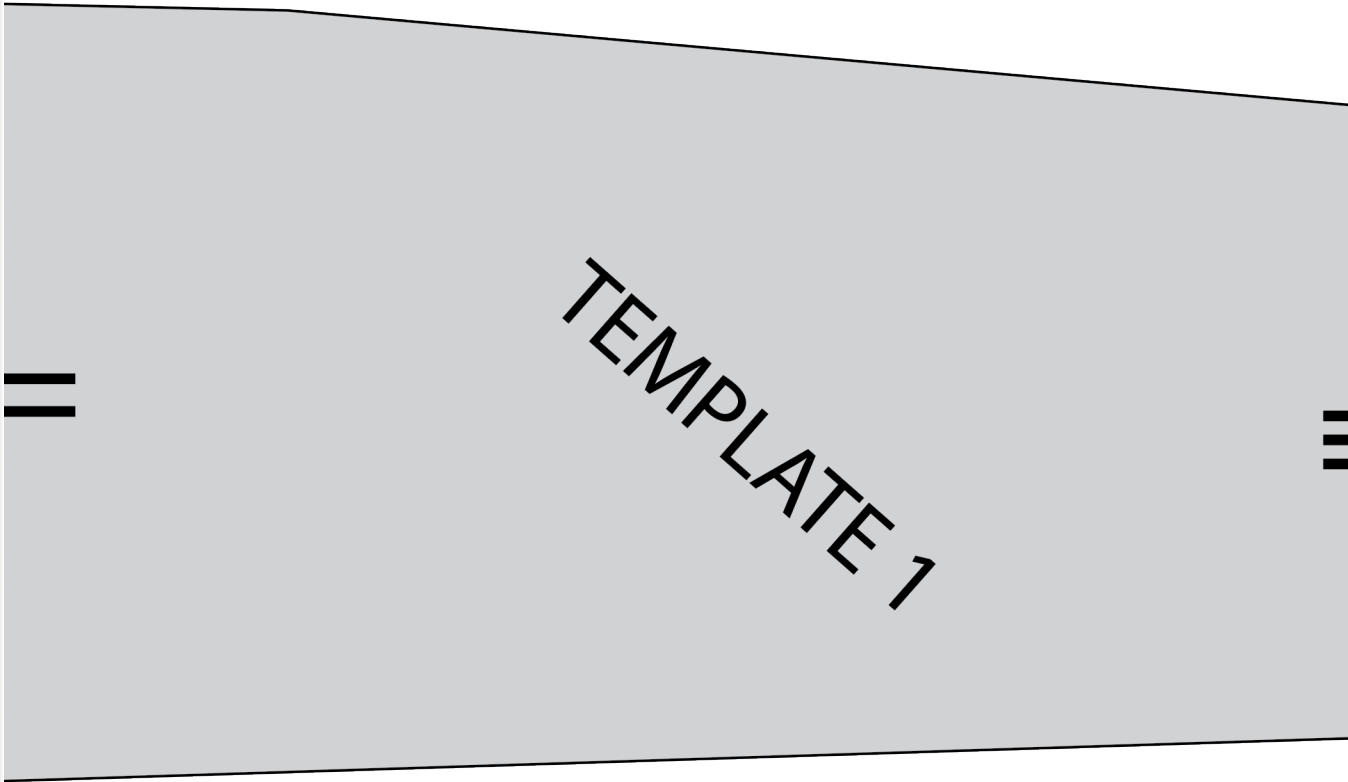


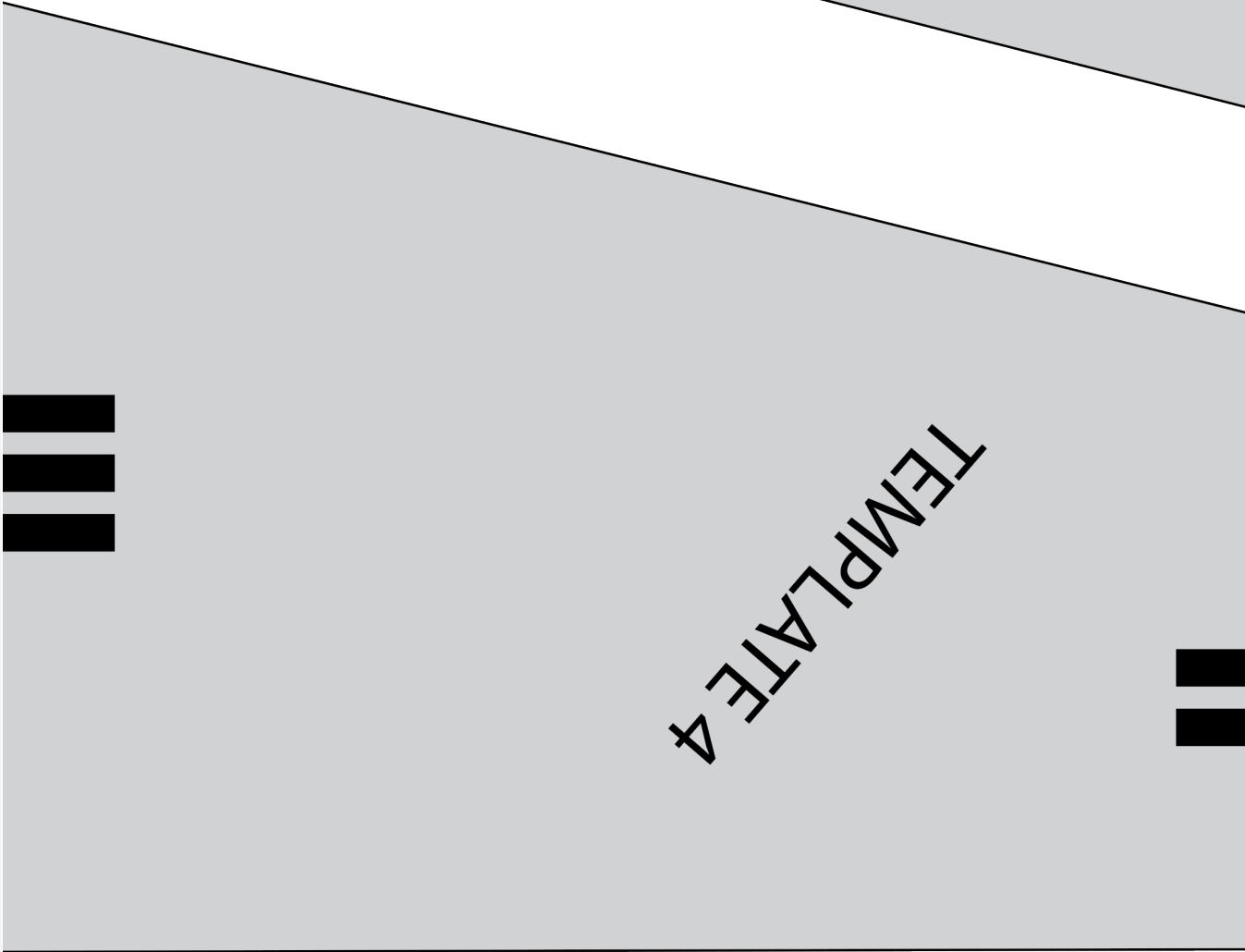
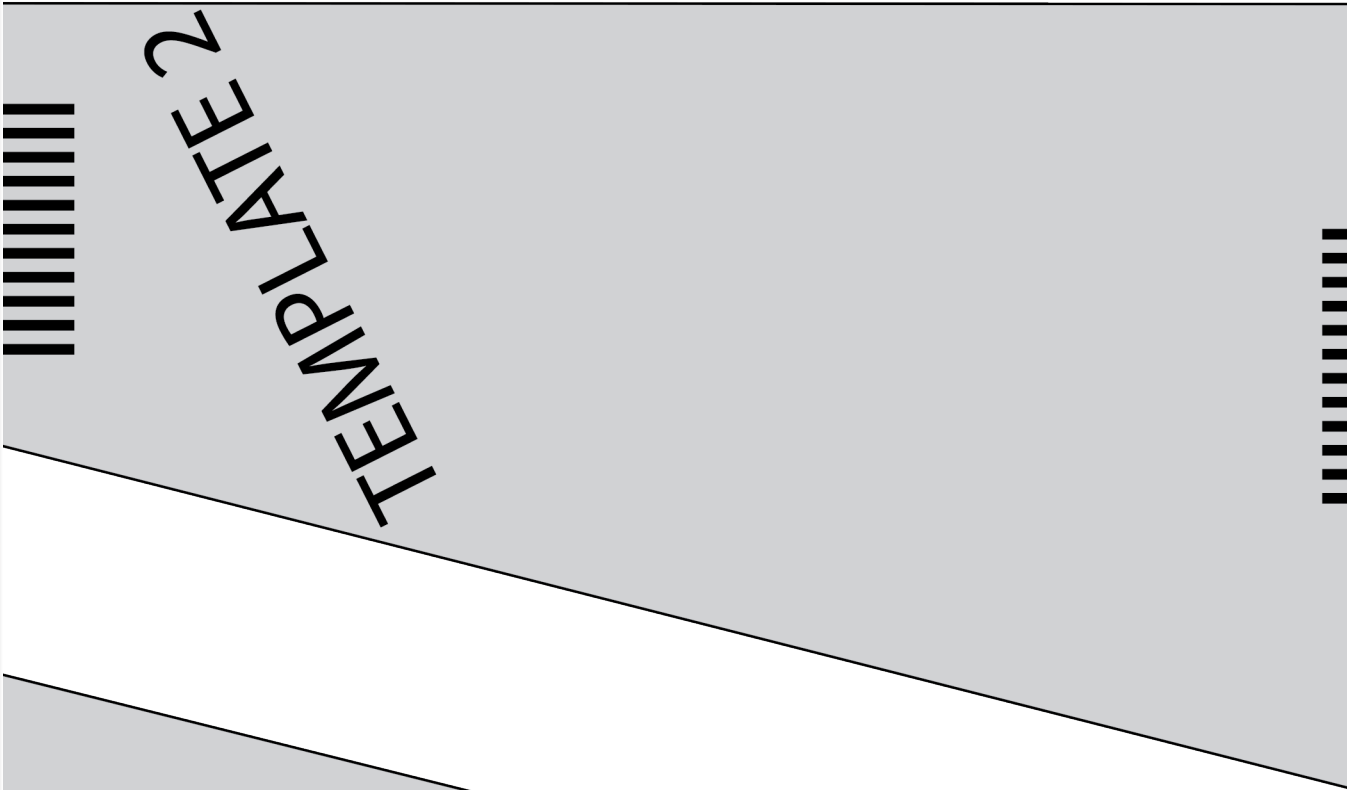


TEMPLATE 6



TEMPLATE 8





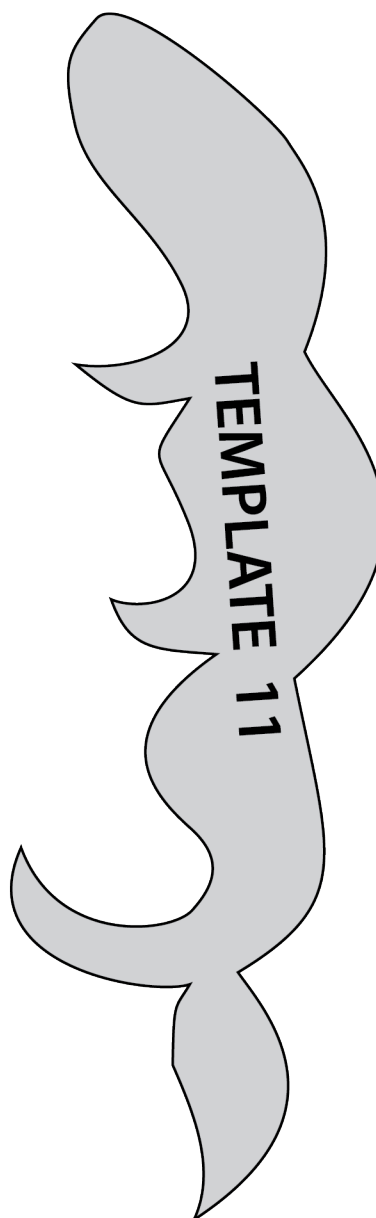
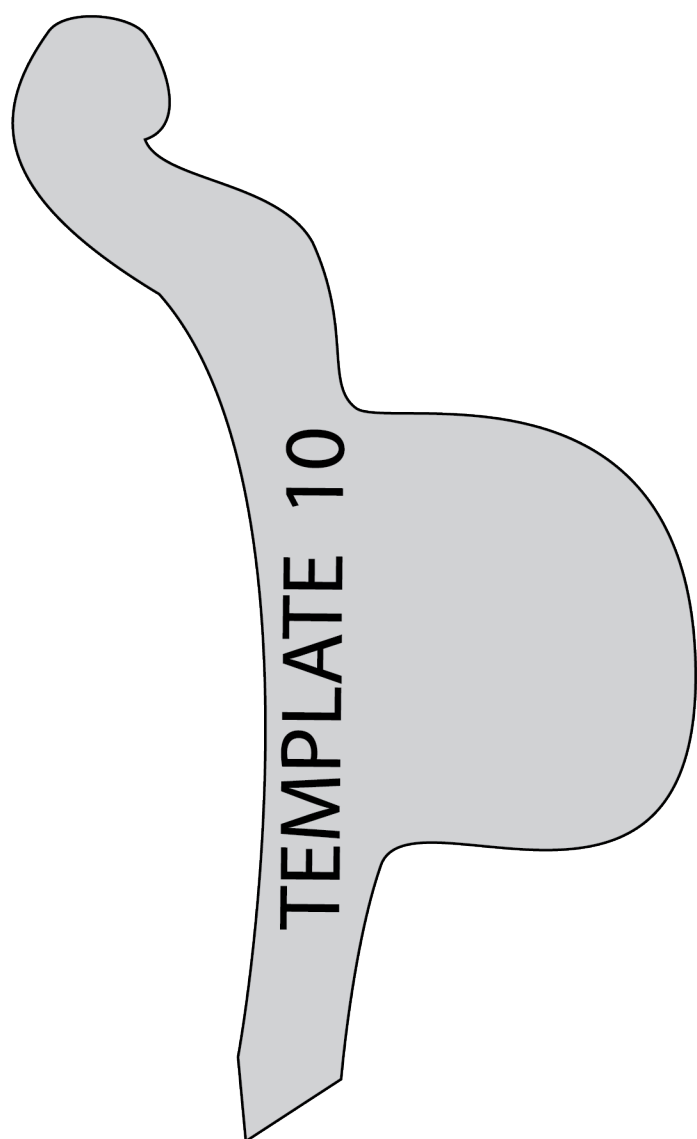


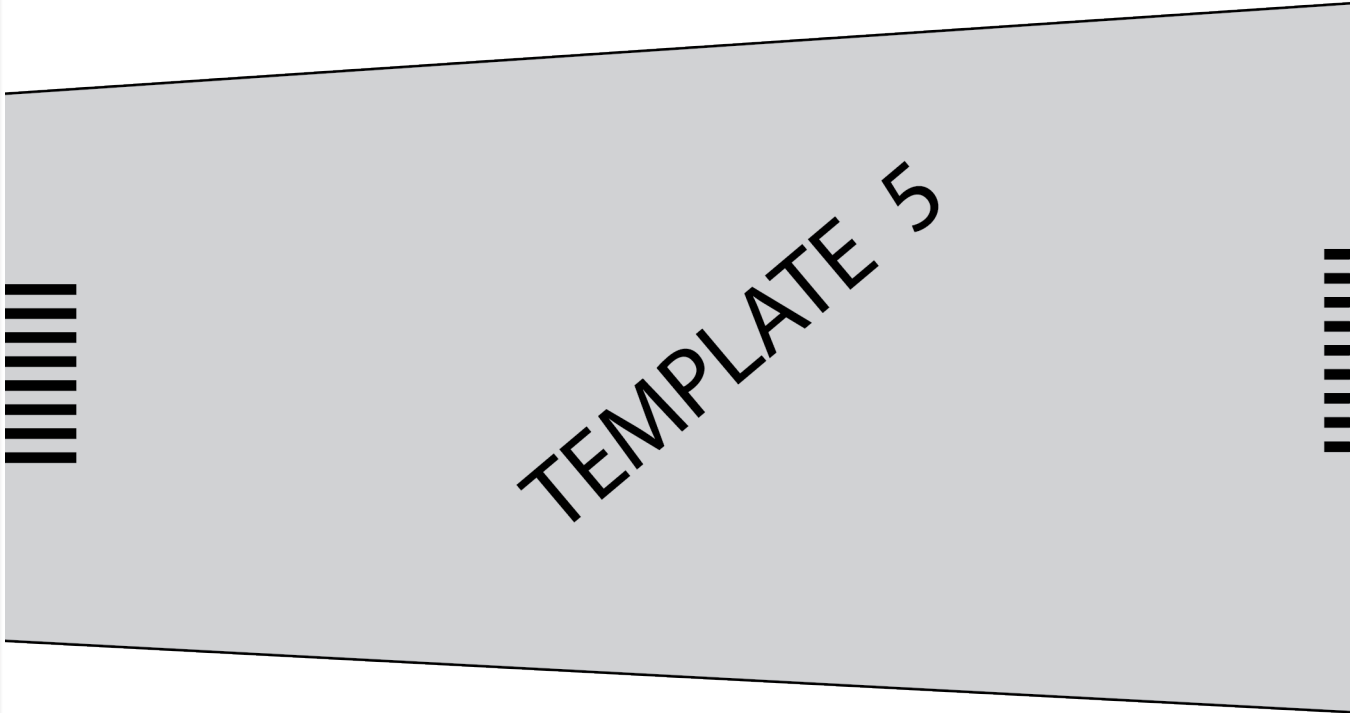
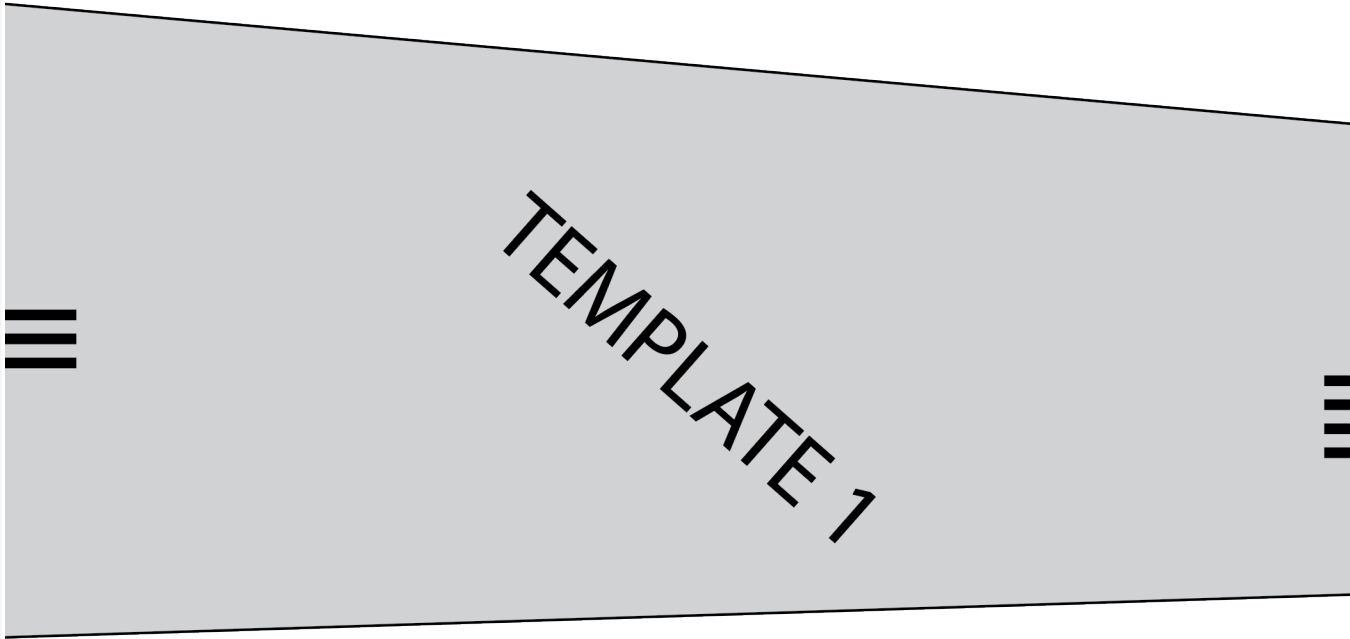
TEMPLATE 3

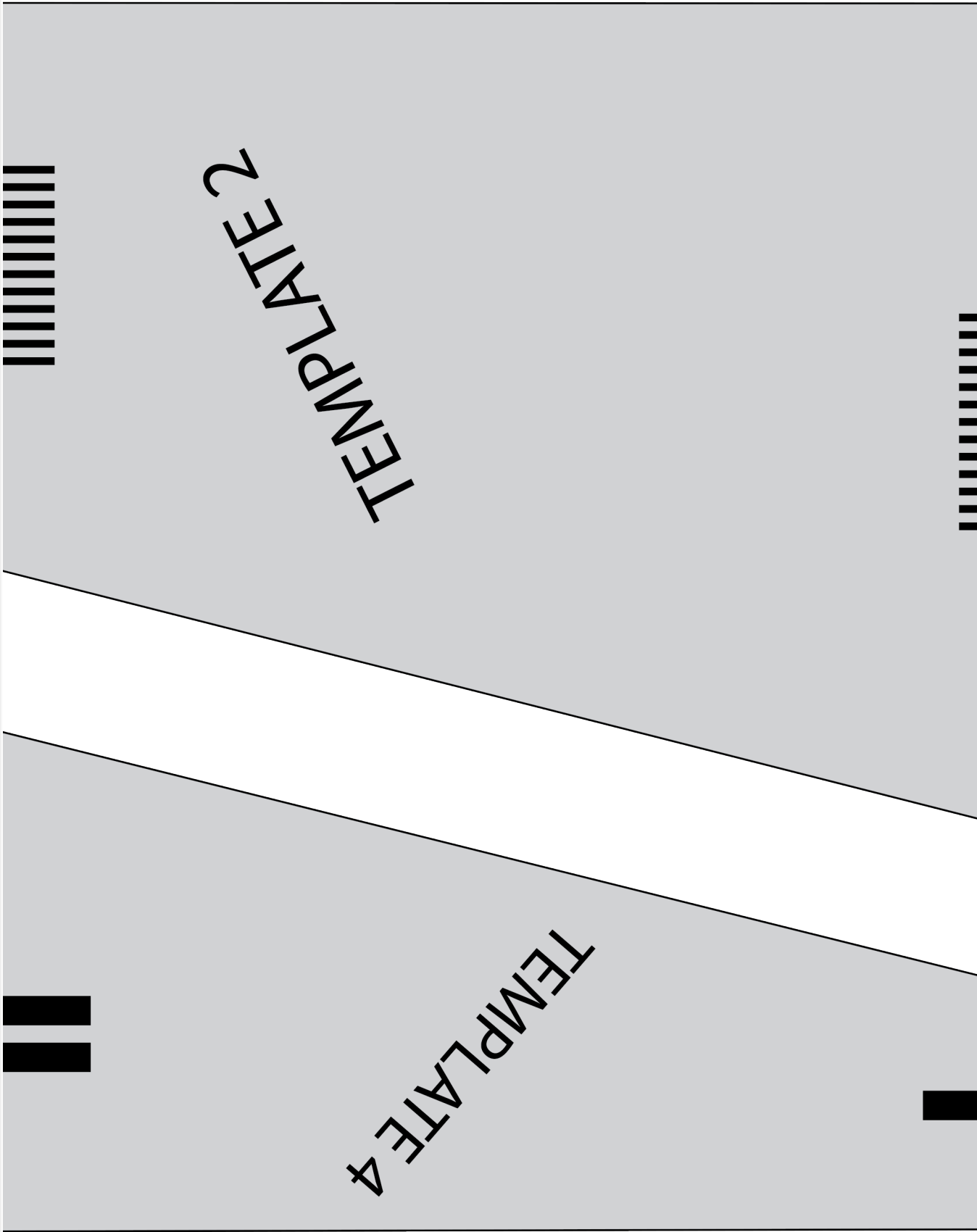


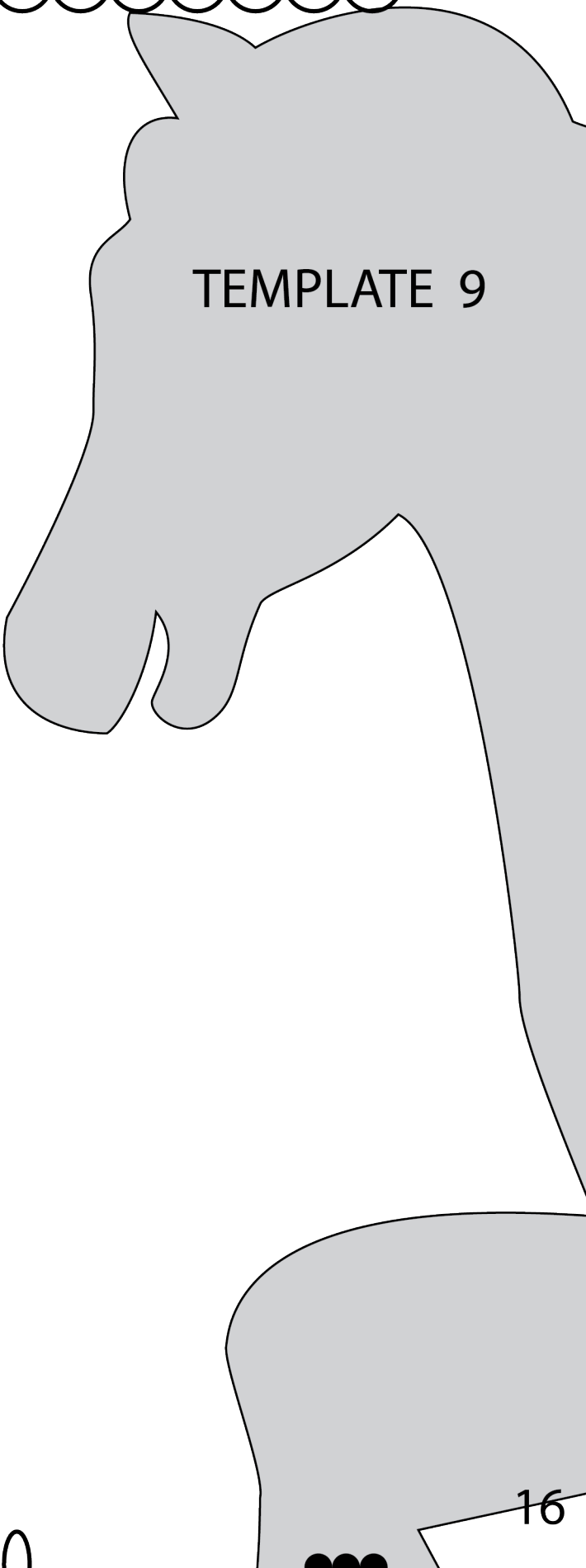
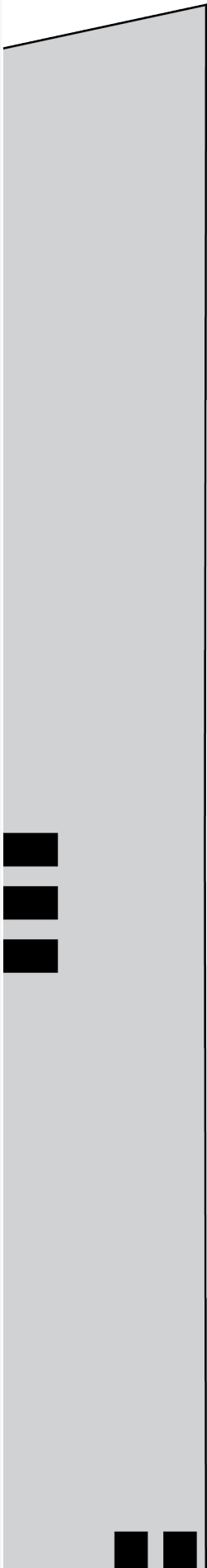
15









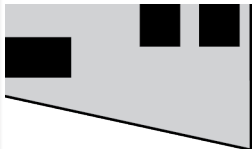


TEMPLATE 9

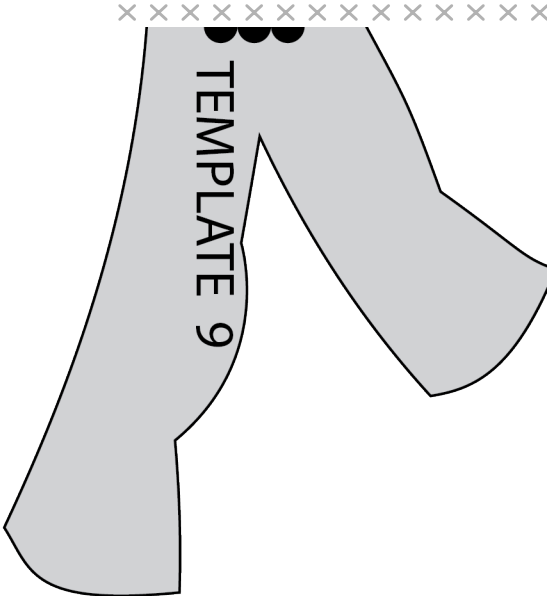
16

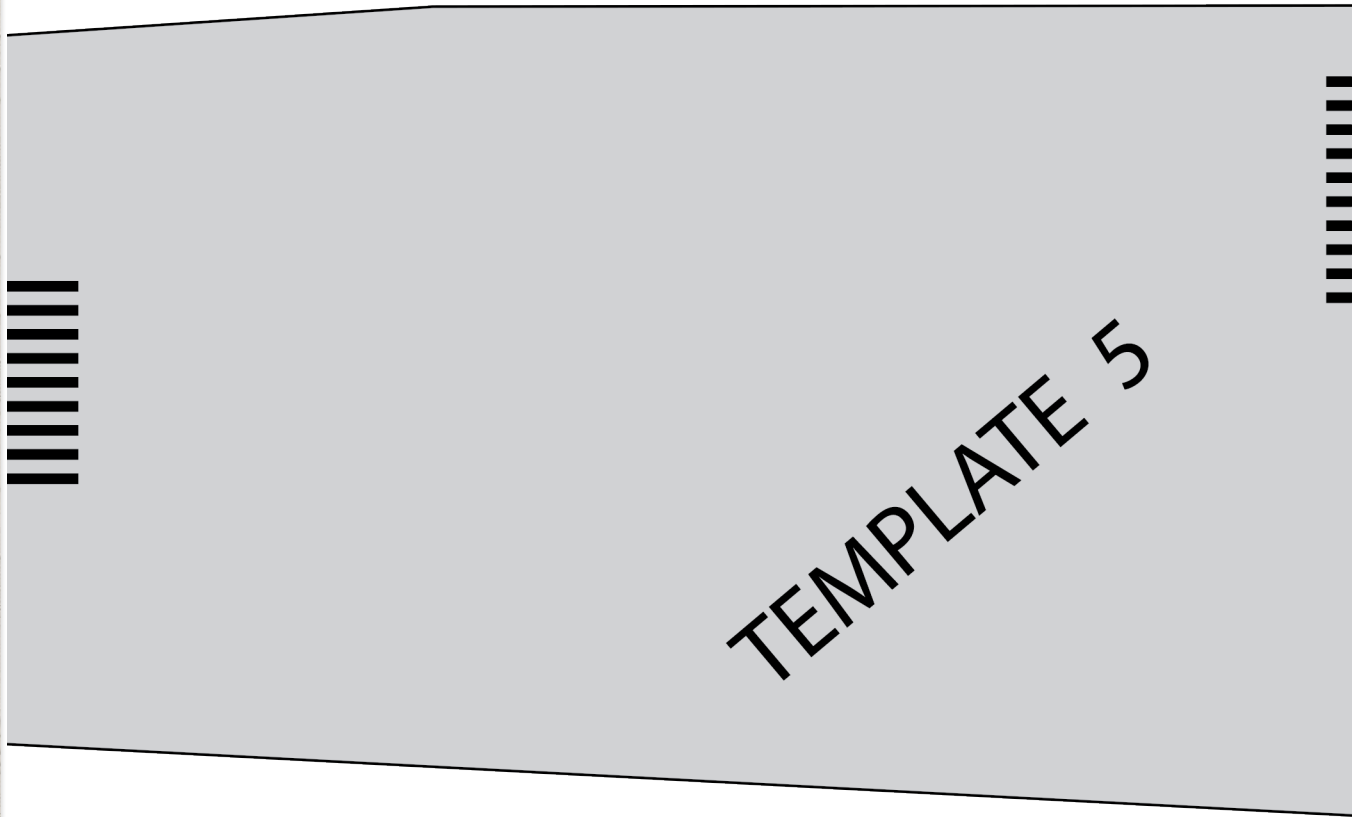


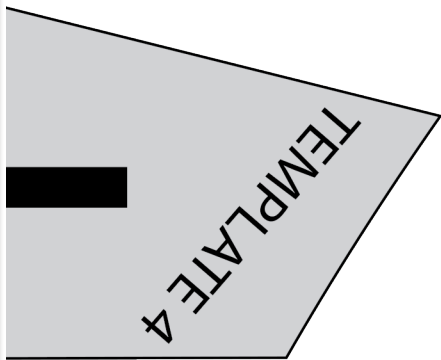
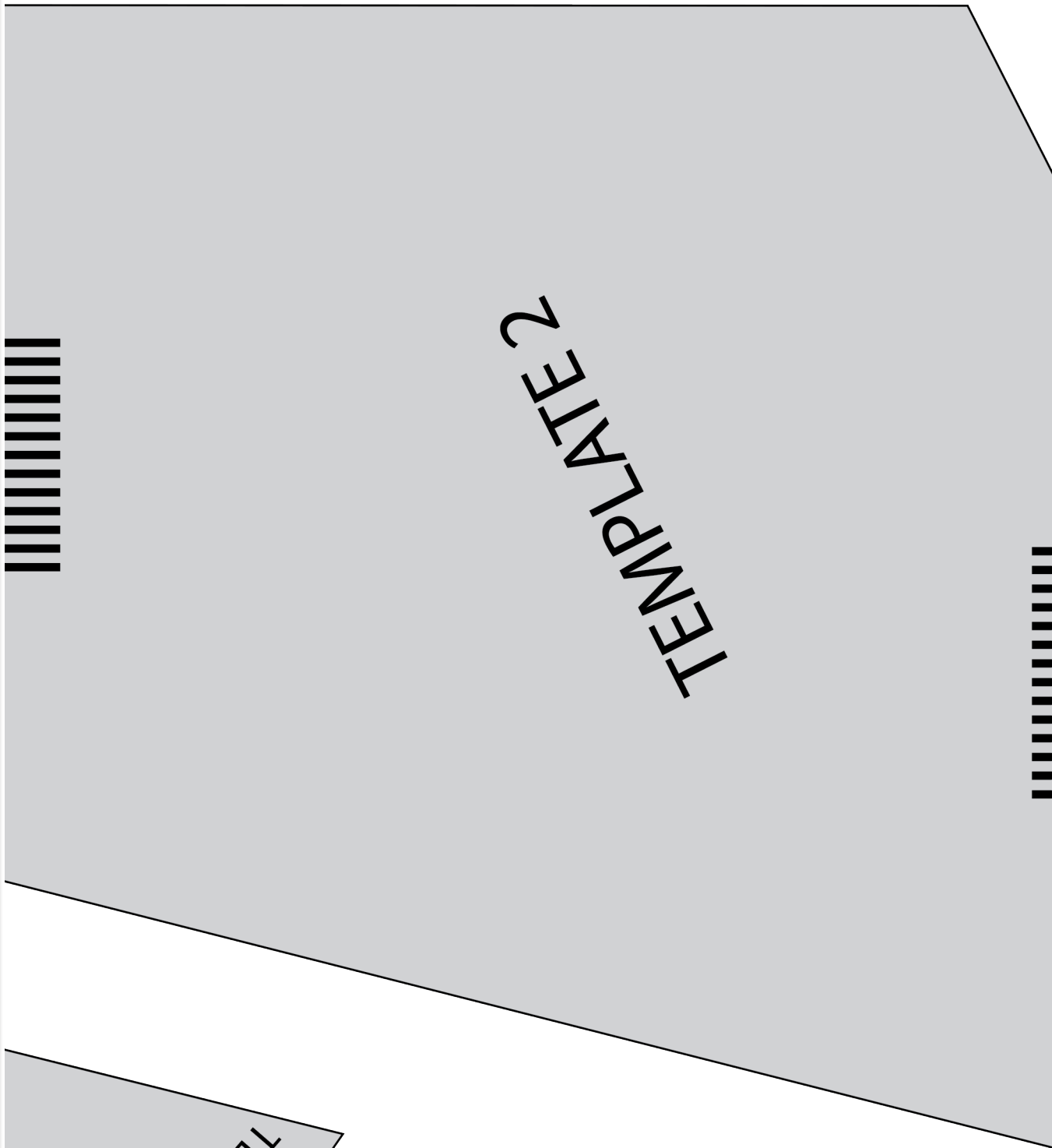
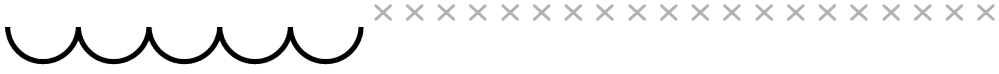




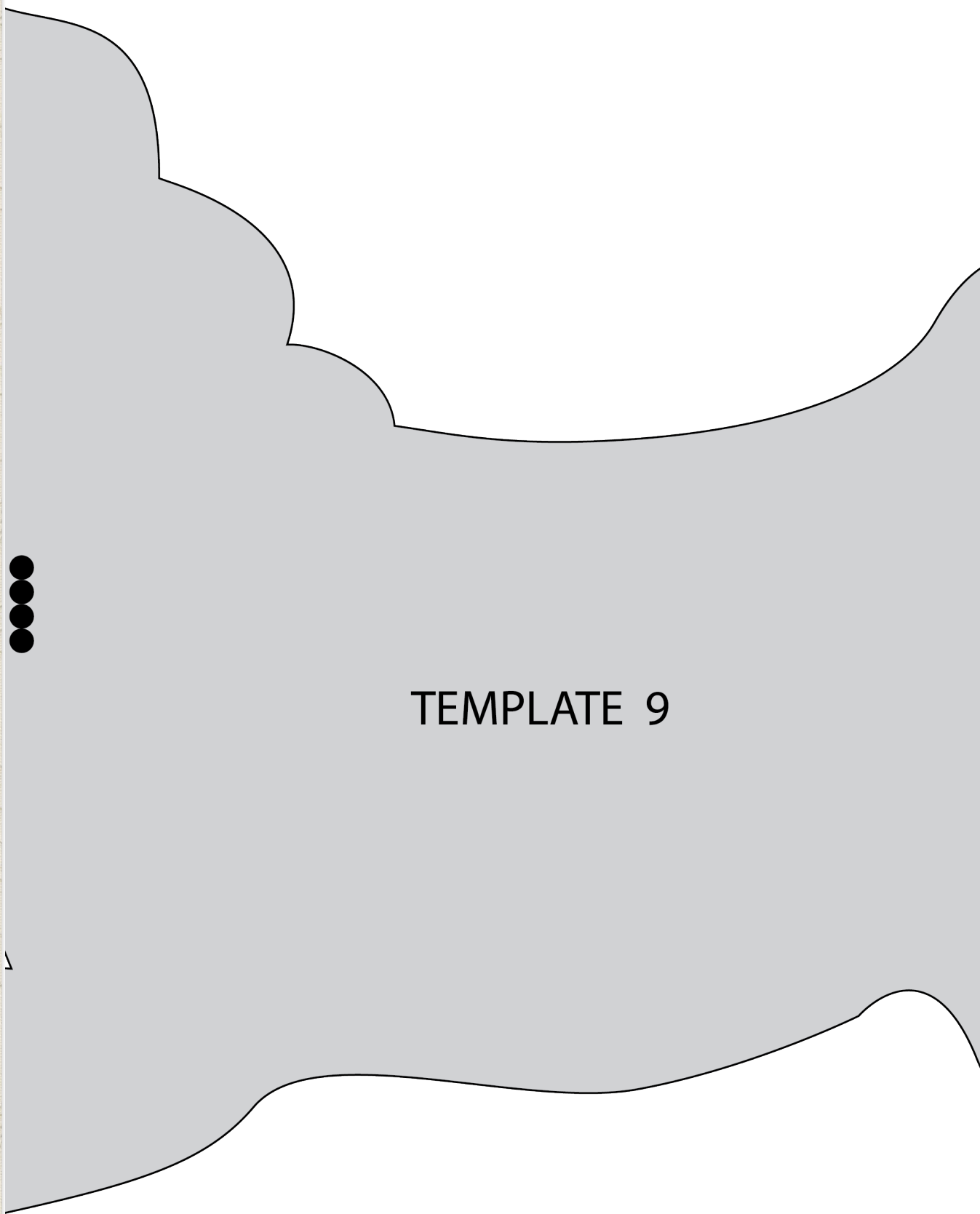
U





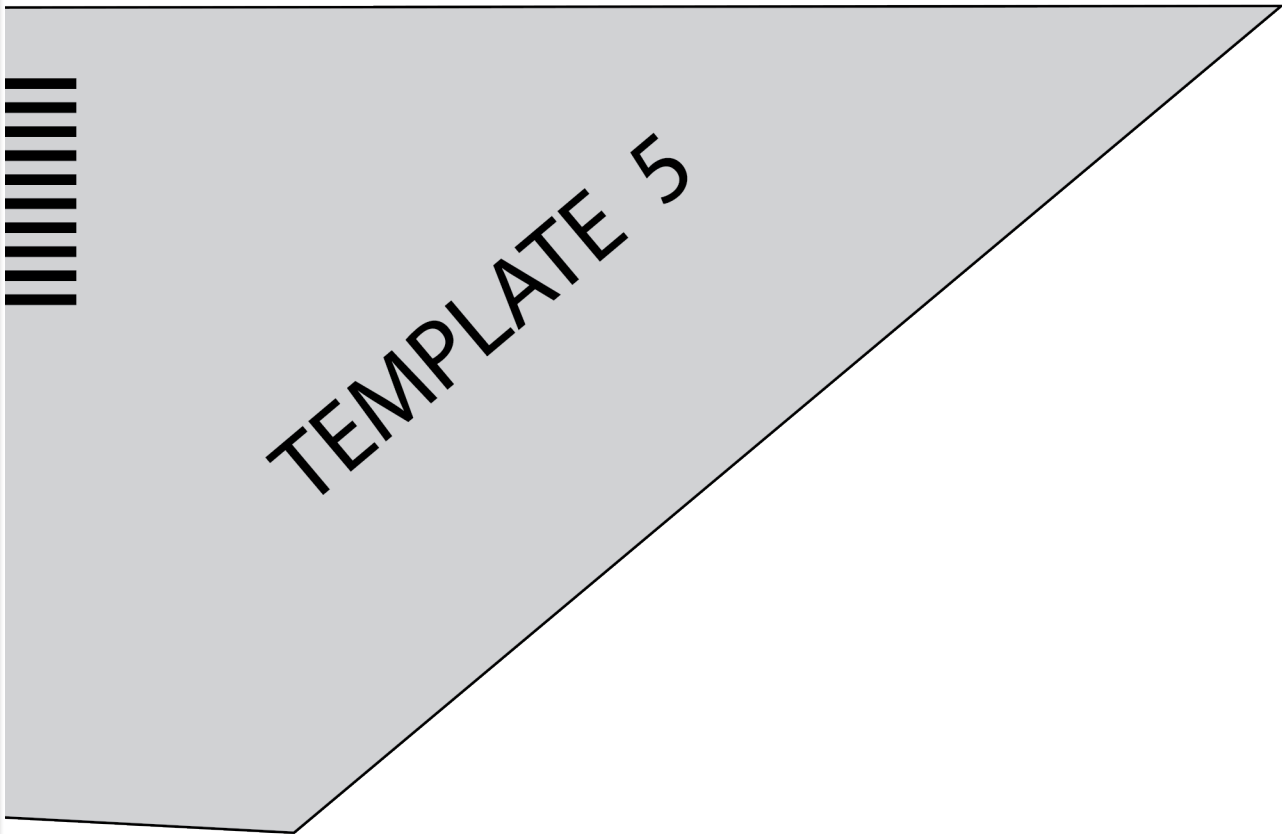
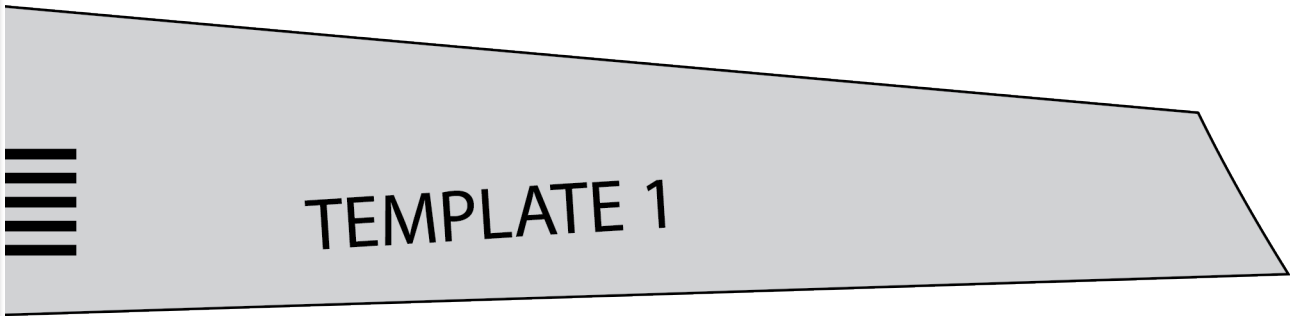


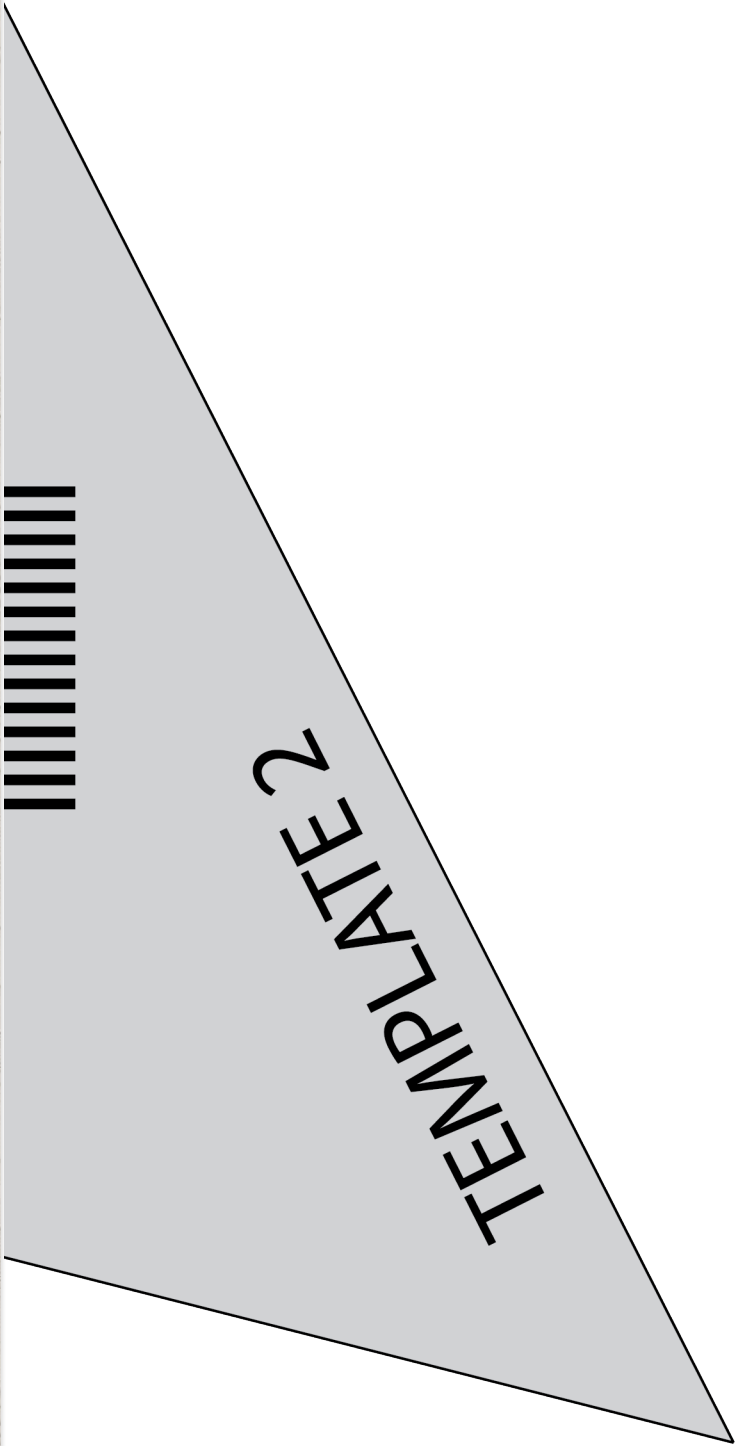
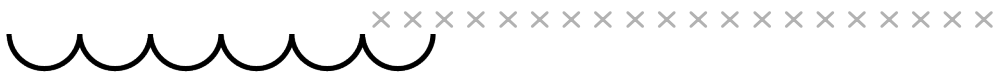




TEMPLATE 9

7









TEMPLATE 9

