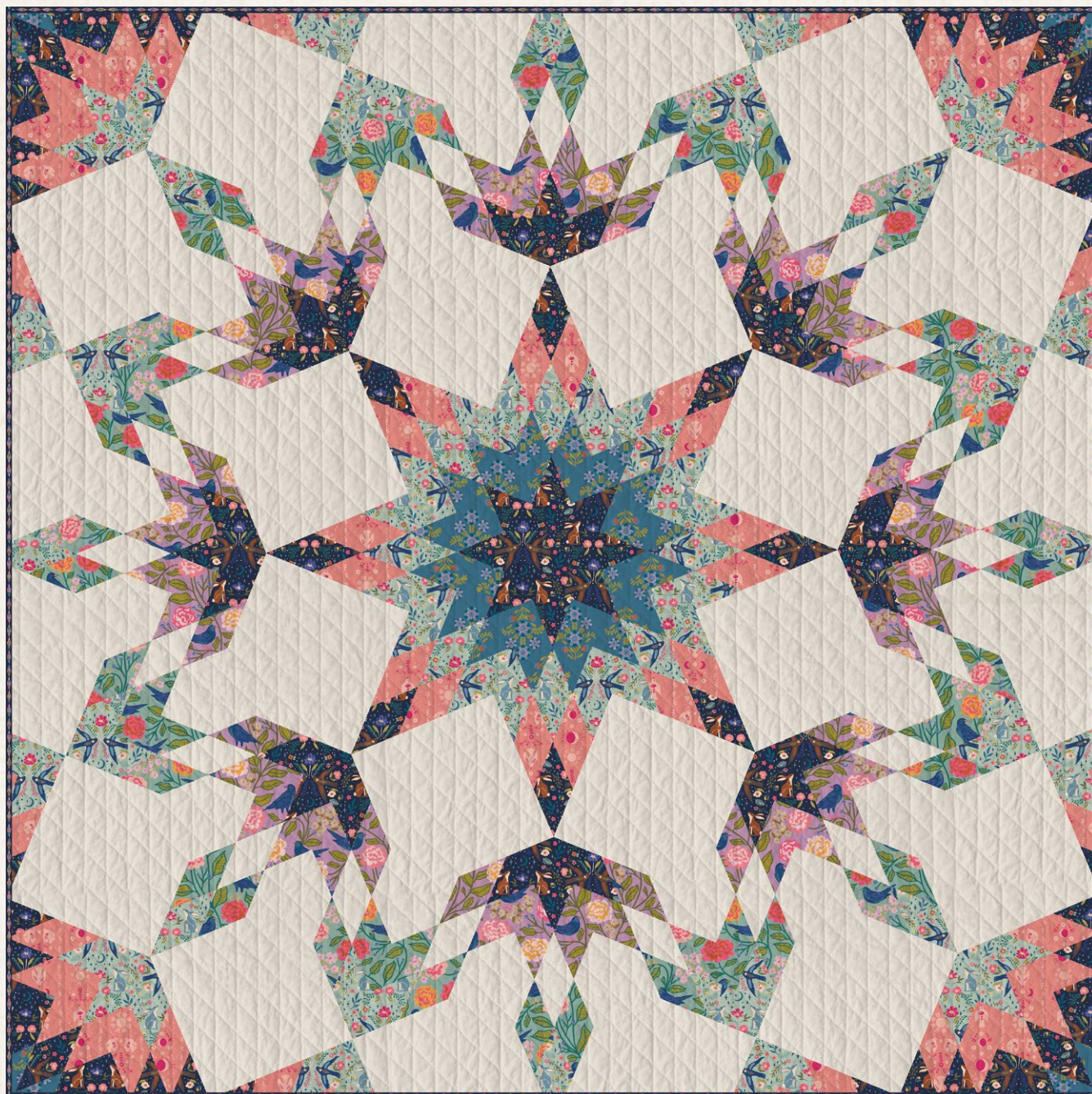


# Endless JOURNEY



FREE PATTERN

XXXXXXXXXXXXXXXXXXXXXXXXXXXX





# Endless JOURNEY

QUILT DESIGNED BY AGFstudio

## STARLING

FABRICS DESIGNED BY MAUREEN CRACKNELL



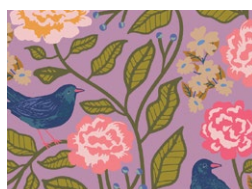
**Fabric A**

STR88908  
ASCENDENCE SHIMMER



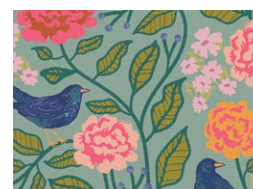
**Fabric B**

STR88913  
MOONLIT FOREST DAWN



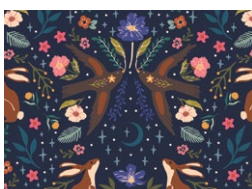
**Fabric C**

STR88906  
BLACKBIRD CANOPY



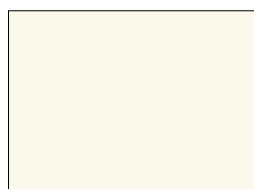
**Fabric D**

STR88900  
BLACKBIRD AVIARY



**Fabric E**

STR88903  
MOONLIT FOREST DUSK



**Fabric F**

PE408  
WHITE LINEN



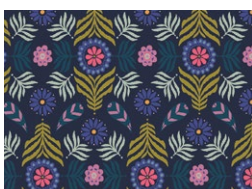
**Fabric G**

STR88914  
BRAMBLEBLOOM BLUE



**Fabric H (Binding)**

BINSTR88  
STARLIT BOUND



**Backing**

STR88915  
BLOOM PLUME



FINISHED SIZE | 90½" x 90½"

## FABRIC REQUIREMENTS

Fabric <b>A</b>	STR88908	1⅜ yd.
Fabric <b>B</b>	STR88913	1½ yd.
Fabric <b>C</b>	STR88906	⅞ yd.
Fabric <b>D</b>	STR88900	⅞ yd.
Fabric <b>E</b>	STR88903	2½ yd.
Fabric <b>F</b>	PE-408	4¼ yd.
Fabric <b>G</b>	STR88914	1¼ yd.
Fabric <b>H</b>	BINSTR88	¾ yd.

BACKING FABRIC  
STR88915 8½ yds (Suggested)

BINDING FABRIC  
Fabric **H** BINSTR88 ¾ yd. (Included)

## CUTTING DIRECTIONS

¼" seam allowances are included.  
WOF means width of fabric.

### Fabric A

- Cut 2 (two) 3½" x WOF strips.

### Fabric B

- Cut 14 (fourteen) 3½" x WOF strips.

### Fabric C

- Cut 8 (eight) 3½" x WOF strips.

### Fabric D

- Cut 8 (eight) 3½" x WOF strips.

### Fabric E

- Cut 24 (twenty four) 3½" x WOF strips.

### Fabric F

- Cut 12 (twelve) 3½" x WOF strips.
- Cut 24 (twenty four) 3½" x WOF strips.

### Fabric G

- Cut 12 (twelve) 3½" x WOF strips.

### Fabric H

- Cut 10 (ten) 2½" x WOF strips. (Binding)

## CONSTRUCTION

*Sew all rights sides together with  $\frac{1}{4}$ " seam allowance.*

- For this project we will be working with strip sets.

### Strip Set 1 (SS1)

- Start by joining 2 (two)  $3\frac{1}{2}$ " x WOF strips from fabric **E**, and 1 (one)  $3\frac{1}{2}$ " x WOF strips from fabric **G**, sew each strip 3" inch IN from the previous strip as shown on the diagram below. Make a total of 4 (four) identical strip blocks.
- Now find a 45 degree line in your ruler and cut 28 (twenty eight)  $3\frac{1}{2}$ " wide diagonal strip.

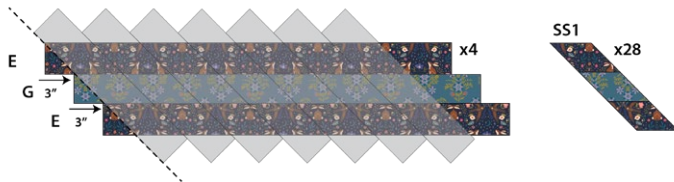


DIAGRAM 1

### Strip Set 2 (SS2)

- Joining 1 (one)  $3\frac{1}{2}$ " x WOF strip from fabrics **A**, **E** and **G**, sew each strip 3" inch IN from the previous strip as shown on the diagram below. Make a total of 4 (four) identical strip blocks.
- Now find a 45 degree line in your ruler and cut 28 (twenty eight)  $3\frac{1}{2}$ " wide diagonal strip.



DIAGRAM 2

### Strip Set 3 (SS3)

- Joining 1 (one)  $3\frac{1}{2}$ " x WOF strip from fabrics **A**, **B** and **E**, sew each strip 3" inch IN from the previous strip as shown on the diagram below. Make a total of 4 (four) identical strip blocks.
- Now find a 45 degree line in your ruler and cut 28 (twenty eight)  $3\frac{1}{2}$ " wide diagonal strip.



DIAGRAM 3

### Block 1:

- Join 1 (one) SS1, 1 (one) SS2 and 1 (one) SS3. Make a total of 28 (twenty eight) block 1.

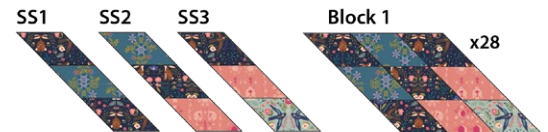


DIAGRAM 4

### Strip Set 4 (SS4)

- Joining 1 (one)  $3\frac{1}{2}$ " x WOF strip from fabrics **E**, **C** and **F**, sew each strip 3" inch IN from the previous strip as shown on the diagram below. Make a total of 4 (four) identical strip blocks.
- Now find a 45 degree line in your ruler and cut 24 (twenty four)  $3\frac{1}{2}$ " wide diagonal strip.



DIAGRAM 5



## Strip Set 5 (SS5)

- Joining 1 (one)  $3\frac{1}{2}$ " x WOF strip from fabrics **C**, **F** and **D**, sew each strip 3" inch IN from the previous strip as shown on the diagram below. Make a total of 4 (four) identical strip blocks.
- Now find a 45 degree line in your ruler and cut 24 (twenty four)  $3\frac{1}{2}$ " wide diagonal strip.



DIAGRAM 6

## Strip Set 6 (SS6)

- Joining 1 (one)  $3\frac{1}{2}$ " x WOF strip from fabrics **F**, **D** and **B**, sew each strip 3" inch IN from the previous strip as shown on the diagram below. Make a total of 4 (four) identical strip blocks.
- Now find a 45 degree line in your ruler and cut 24 (twenty four)  $3\frac{1}{2}$ " wide diagonal strip.



DIAGRAM 7

### • Block 2:

- Join 1 (one) SS4, 1 (one) SS5 and 1 (one) SS6. Make a total of 24 (twenty four) block 2.

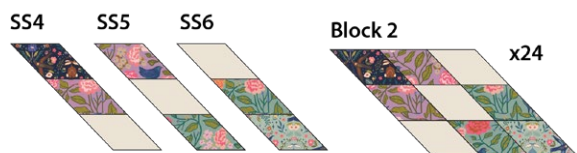


DIAGRAM 8

## Strip Set 7 (SS7)

- Joining 1 (one)  $3\frac{1}{2}$ " x WOF strip from fabrics **E**, **G** and **B**, sew each strip 3" inch IN from the previous strip as shown on the diagram below. Make a total of 2 (two) identical strip blocks.
- Now find a 45 degree line in your ruler and cut 8 (eight)  $3\frac{1}{2}$ " wide diagonal strip.

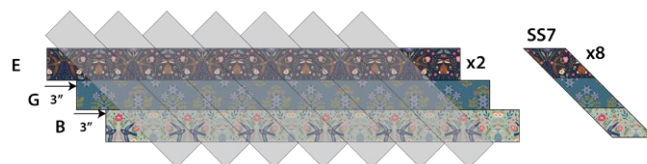


DIAGRAM 9

## Strip Set 8 (SS8)

- Joining (1)  $3\frac{1}{2}$ " x WOF strip from fabrics **G**, **B** and **A**, sew each strip 3" inch in from the previous strip as shown on the diagram below. Make a total of (2) identical strip blocks.
- Now find a 45 degree line in your ruler and cut (8)  $3\frac{1}{2}$ " wide diagonal strip.

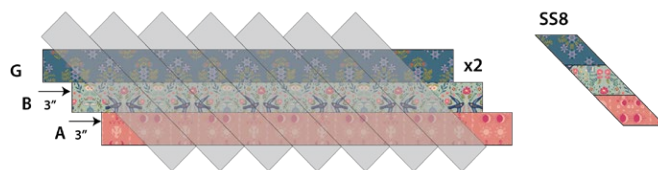


DIAGRAM 10

## Strip Set 9 (SS9)

- Joining 1 (one)  $3\frac{1}{2}$ " x WOF strip from fabrics **B**, **A** and **E**, sew each strip 3" inch IN from the previous strip as shown on the diagram below. Make a total of 2 (two) identical strip blocks.
- Now find a 45 degree line in your ruler and cut 8 (eight)  $3\frac{1}{2}$ " wide diagonal strip



DIAGRAM 11

### Block 3:

- Join 1 (one) SS7, 1 (one) SS8 and 1 (one) SS9. Make a total of 8 (eight) block 3.



DIAGRAM 12

- Cut 24 (twenty four) 13 $\frac{3}{8}$ " squares from fabric **F** on a diagonal. See diagram below for reference.
- Now, you should have a total of 48 (fourty eight) triangles from fabric **F**.

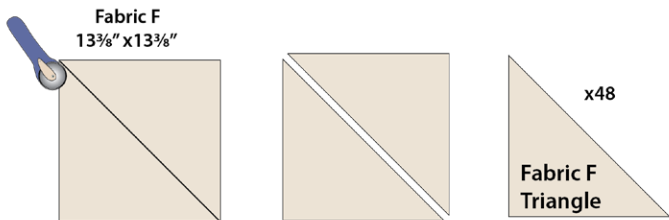


DIAGRAM 13

### Block 4:

- Join 1 (one) block 1, 1 (one) block 2 and 2 (two) triangles from fabric **F**. Make a total of 4 (four) block 5.

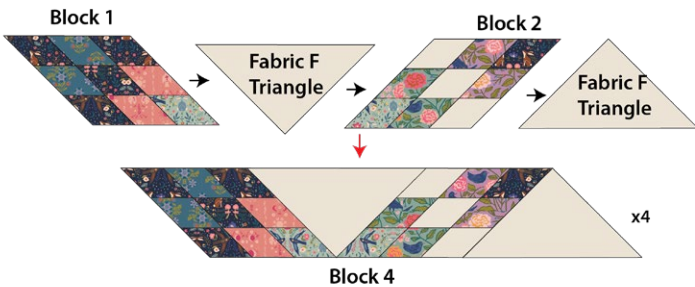


DIAGRAM 14

### Block 5:

- Join 1 (one) block 1, 1 (one) block 2 and 1 (one) triangle from fabric **F**. Make a total of 4 (four) block 5.

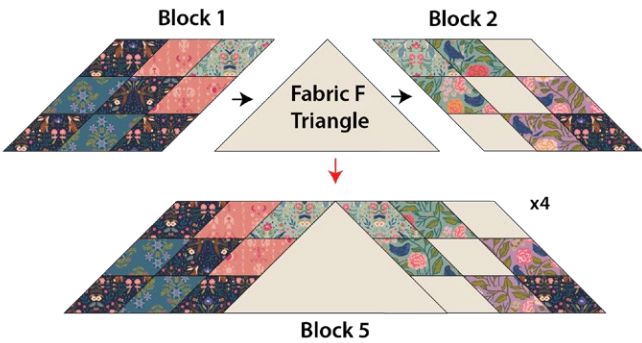


DIAGRAM 15

### Block 6:

- Join 2 (two) block 1 and 1 (one) triangle from fabric **F**. Make a total of 4 (four) block 6.

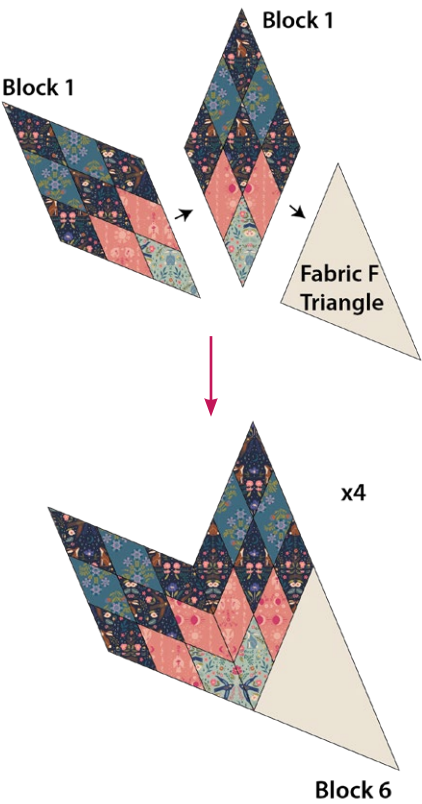


DIAGRAM 16

XX

- 
- Block 2**

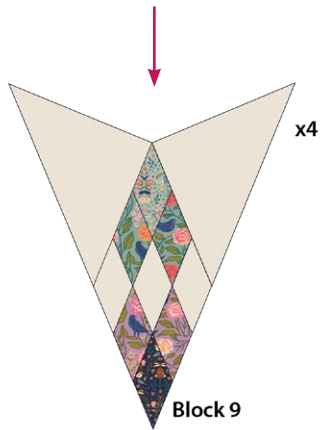


DIAGRAM 19

Block 1      Block 2      Block 3

Fabric F Triangle      Fabric F Triangle

Block 8 x4

### Block 10:

- 
- Diagram illustrating the assembly of a quilt block. The process involves combining individual fabric triangles and blocks to form a larger block. The components shown are:
- Fabric F Triangle
  - Block 2
  - Fabric F Triangle
  - Block 1
- These components are joined together to form the final assembly, Block 10.

DIAGRAM 20

- Join 1 (one) block 2 and 2 (two) triangles from fabric **F**. Make a total of 4 (four) block 9.
- Pay attention to block 1, 2 and 3 directions before your sew them.



### Block 11:

- Join 1 (one) block 4, 5 and 6. Make a total of 4 (four) block 11. Make a total of 4 (four) Block 11.
- See diagram below for reference.

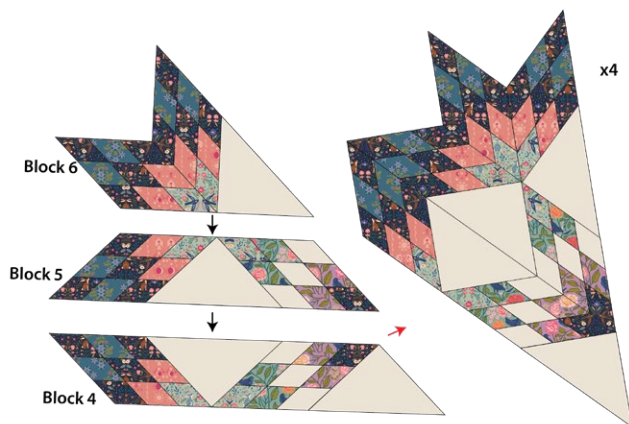


DIAGRAM 21

### Block 12:

- Join 1 (one) block 7 and 8. Make a total of 4 (four) block 12.
- See diagram below for reference.

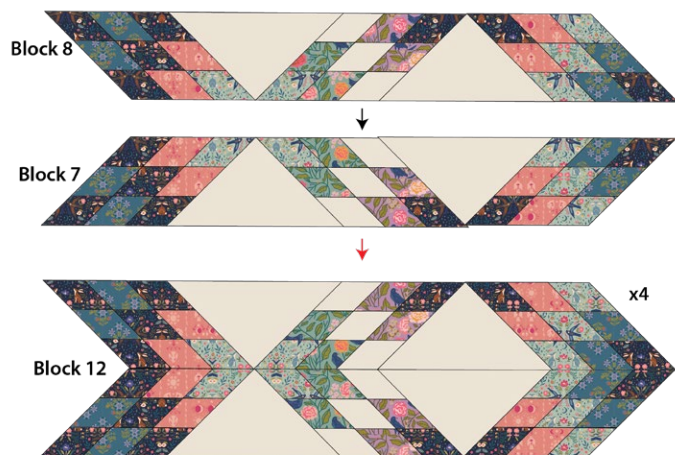


DIAGRAM 22

### Block 13:

- Join 1 (one) block 9 and 10. Make a total of 4 (four) block 13.
- See diagram below for reference.

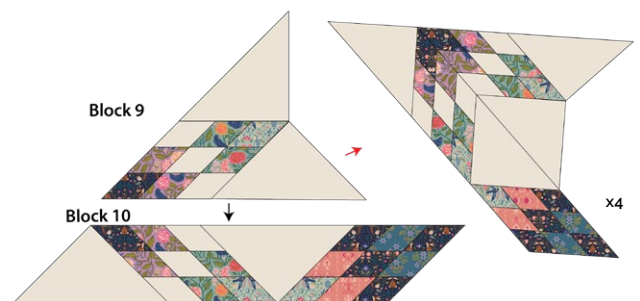


DIAGRAM 23

### Block 14:

- Join 1 (one) block 11, 12 and 13. Make a total of 4 (four) block 14.
- See diagram below for reference.

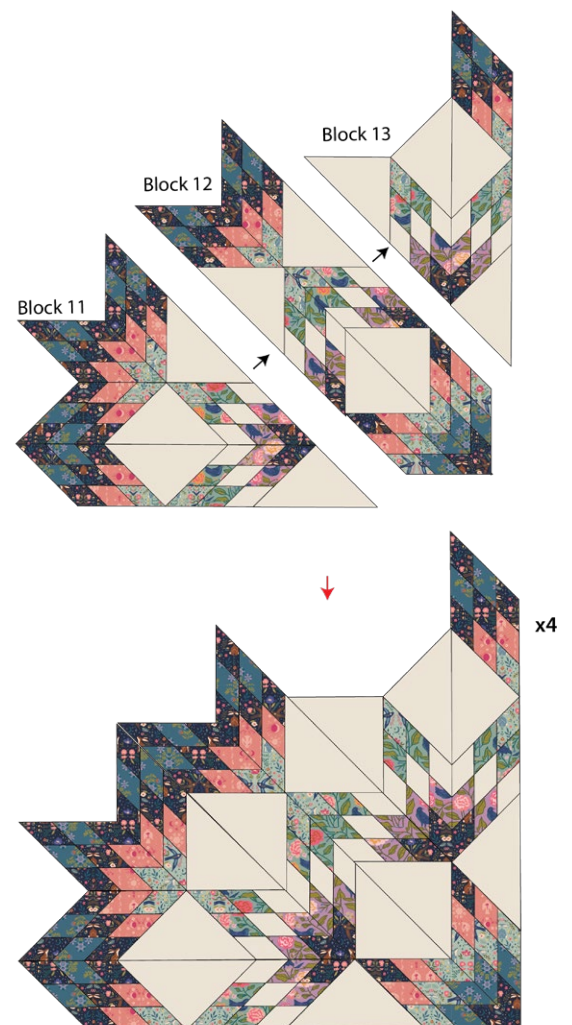


DIAGRAM 24



- Join all 4 (four) blocks 14 as shown on diagram below.

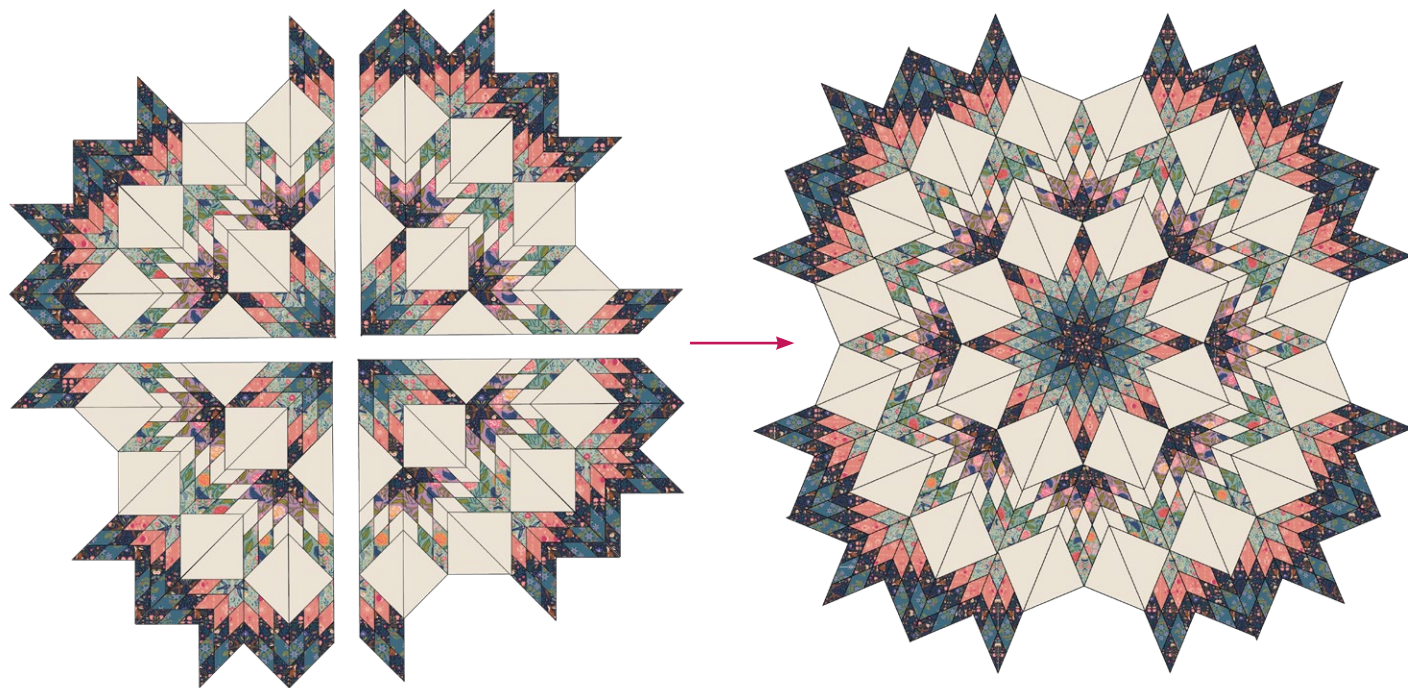


DIAGRAM 25

- Measure  $90\frac{1}{2}$ " x  $90\frac{1}{2}$ " around the quilt top and trim.

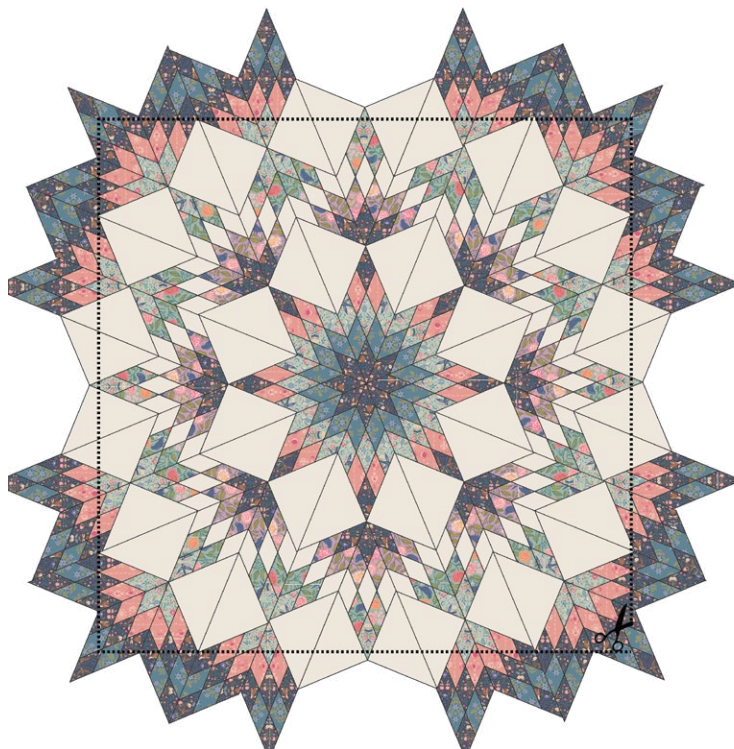
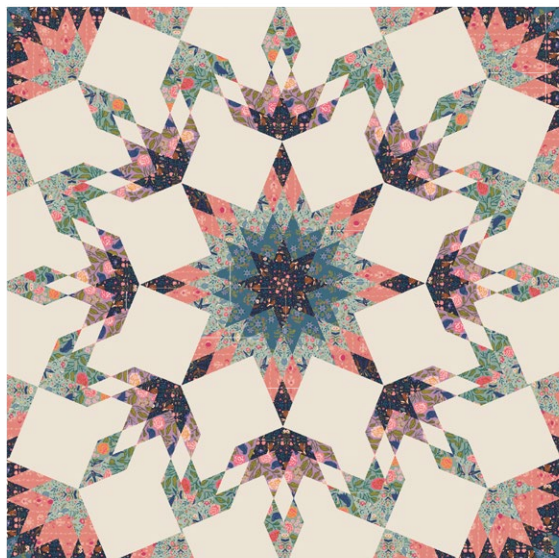


DIAGRAM 26

## QUILT TOP



## QUILT ASSEMBLY

*Sew rights sides together.*

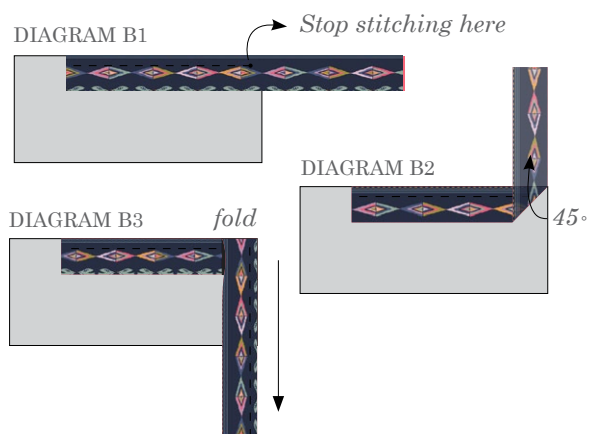
- Place BACKING FABRIC on a large surface wrong side up. Stretch it with masking tape against that surface.
- Place BATTING on top of backing fabric.
- Place TOP on top of the batting with right side facing up. Smooth away wrinkles using your hands.
- Pin all layers together and baste with basting thread, using long stitches. You can also use safety pins to join the layers.
- Machine or hand quilt starting at the center and working towards the corners. Remember that quilting motifs are a matter of personal preference. Have fun choosing yours!
- After you finished, trim excess of any fabric or batting, squaring the quilt to proceed to bind it.

## BINDING

*Sew rights sides together.*

- Cut enough strips 2½" wide by the width of the fabric **H** to make a final strip 372" long. Start sewing the binding strip in the middle of one of the sides of the quilt, placing the strip right side down and leaving an approximated 5" tail. Sew with ¼" seam allowance (using straight stitch), aligning the strip's raw edge with the quilt top's raw edge.

- Stop stitching ¼" before the edge of the quilt (DIAGRAM B 1). Clip the threads. Remove the quilt from under the machine presser foot. Fold the strip in a motion of 45° and upward, pressing with your fingers (DIAGRAM B2). Hold this fold with your finger, bring the strip down in line with the next edge, making a horizontal fold that aligns with the top edge of the quilt (DIAGRAM B3). Start sewing at ¼" of the border, stitching all the layers. Do the same in the four corners of the quilt.
- Stop stitching before you reach the last 5 or 6 inches. Cut the threads and remove the quilt from under the machine presser foot. Lay the loose ends of the binding flat along the quilt edge, folding the ends back on themselves where they meet. Press them together to form a crease. Using this crease as the stitching line, sew the two open ends of the binding with right sides together (you can help yourself marking with a pencil if the crease is difficult to see).
- Trim seam to ¼" and press open. Complete the sewing. Turn binding to back of the quilt, turn raw edge inside and stitch by hand using blind stitch.
- If you are using our 2.5 edition (binding fabric), click or scan this QR code to see a tutorial on how to use this specialty fabric.





XXXXXXXXXXXXXXXXXXXXXXXXXXXXXXXXXXXX

*Congratulations  
& enjoy*

XXXXXXXXXXXXXXXXXXXXXXXXXXXXXXXXXXXX



[artgalleryfabrics.com](http://artgalleryfabrics.com)

NOTE: While all possible care has been taken to ensure the accuracy of this pattern, We are not responsible for printing errors or the way in which individual work varies.

Please read instructions carefully before starting the construction of this quilt. If desired, wash and iron your fabrics before starting to cut.

© 2025 Courtesy of Art Gallery Quilts LLC. All Rights Reserved.