

X
X
X
X
X
X
X
X
X
X
X
X

MODERNISTA EDITION



x x x x x x x x x x x x x x x x x x



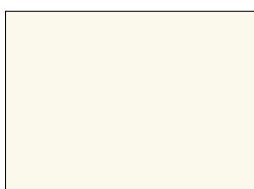
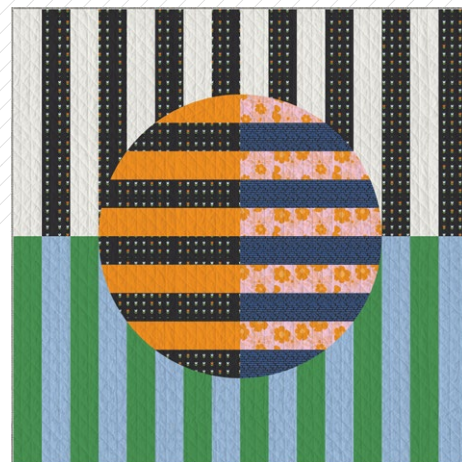
day night

MODERNISTA EDITION

QUILT DESIGNED BY AGFstudio

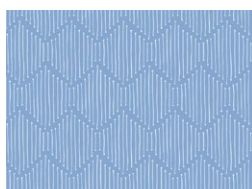
THE CUR8TOR | Modernista

FABRICS DESIGNED BY AGF STUDIO



Fabric A

PE408
WHITE LINEN



Fabric B

CUR8MO303
MINDFUL PATHS SERENE



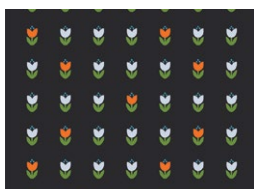
Fabric C

CUR8MO301
PLAYING DOTS OVERCAST



Fabric D

PE520
SWEET TANGERINE



Fabric E

CUR8MO306
ROOTED TULIPS



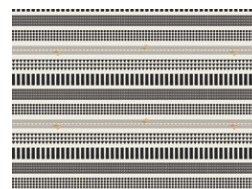
Fabric F

CUR8MO305
ASPHODEL DELIGHT



Fabric G

PE576
COLOR CRESCENTS



Fabric H

BIN25105
GEOMETRY BOUND



Backing

CUR8MO307
TIMBER ECHOES





MODERNISTA EDITION

FINISHED SIZE | 64½" x 64½"

FABRIC REQUIREMENTS

Fabric A	PE408	1 yd.
Fabric B	CUR8MO303	1 yd.
Fabric C	CUR8MO301	½ yd.
Fabric D	PE520	½ yd.
Fabric E	CUR8MO306	1½ yd.
Fabric F	CUR8MO305	½ yd.
Fabric G	PE576	1 yd.
Fabric H	BIN25105	⅝ yd.

BACKING FABRIC
CUR8MO307 5 yds *(Suggested)*

BINDING FABRIC
Fabric **H** BIN25105 *(Included)*

CUTTING DIRECTIONS

¼" seam allowances are included.
WOF means width of fabric.

Fabric A

- Cut 8 (eight) 4½" x WOF strips, then:
- Sub-cut into 8 (eight) 4½" x 32½" strips.

Fabric B

- Cut 8 (eight) 4½" x WOF strips, then:
- Sub-cut into 8 (eight) 4½" x 32½" strips.

Fabric C

- Cut 3 (three) 4½" x WOF strips, then;
- Sub-cut into 6 (six) 4½" x 21" strips.

Fabric D

- Cut 3 (three) 4½" x WOF strips, then;
- Sub-cut into 6 (six) 4½" x 21" strips.

Fabric E

- Cut 3 (three) 4½" x WOF strips, then;
- Sub-cut into 6 (six) 4½" x 21" strips.
- Cut 8 (eight) 32½" x 4½" strips.

(Follow diagram for cutting directions)

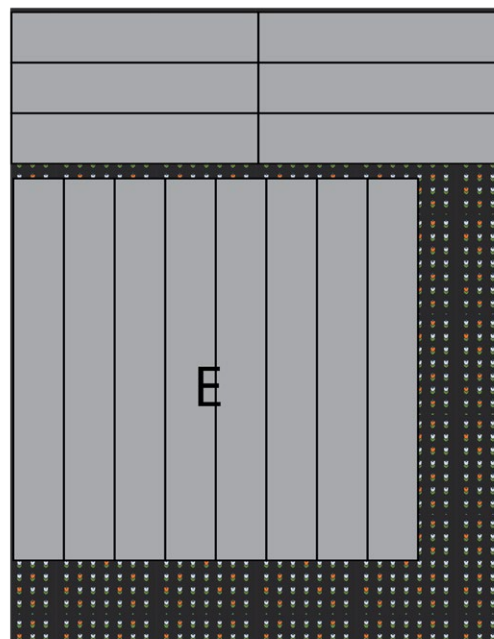


DIAGRAM 1

Fabric F

- Cut 3 (three) 4½" x WOF strips, then;
 - Sub-cut into 6 (six) 4½" x 21" strips.

Fabric G

- Cut 8 (eight) $4\frac{1}{2}$ " x WOF strips, then;
 - Sub-cut into 8 (eight) $4\frac{1}{2}$ " x $32\frac{1}{2}$ " strips.

Fabric H

- Cut 7 (seven) 2½" x WOF strips. (Binding)

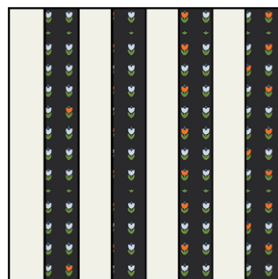
CONSTRUCTION

Sew all rights sides together with ¼" seam allowance.

- Make the following strip sets:

SS1

- Sew 4 (four) $4\frac{1}{2}$ " x $32\frac{1}{2}$ " strips from fabric **A** and 4 (four) $32\frac{1}{2}$ " x $4\frac{1}{2}$ " strips from fabric **E** right sides together.
- Make 2 (two) SS1.

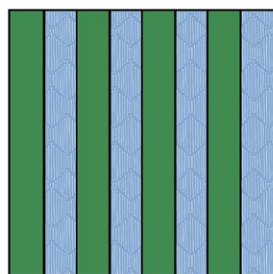


Strip Set 1

DIAGRAM 2

SS2

- Sew 4 (four) $4\frac{1}{2}$ " x $32\frac{1}{2}$ " strips from fabric **C** and 4 (four) $4\frac{1}{2}$ " x $32\frac{1}{2}$ " strips from fabric **G** right sides together.
- Make 2 (two) SS2

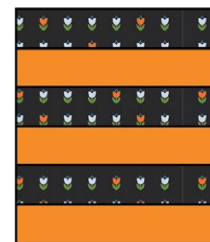


Strip Set 2

DIAGRAM 3

SS3

- Sew 3 (three) $4\frac{1}{2}$ " x 21" strips from fabric **D** and 3 (three) $4\frac{1}{2}$ " x 21" strips from fabric **E** right sides together.
- Make 2 (two) SS3.



Strip Set 3

DIAGRAM 4

SS4

- Sew 3 (three) $4\frac{1}{2}$ " x 21" strips from fabric **C** and 3 (three) $4\frac{1}{2}$ " x 21" strips from fabric **F** right sides together.
- Make 2 (two) SS4.



Strip Set 4

DIAGRAM 5

- Use **Template A** to cut the quarter circle on 2 (two) SS1 and 2 (two) SS2. Make sure to keep the strip direction vertical as shown in the diagram.

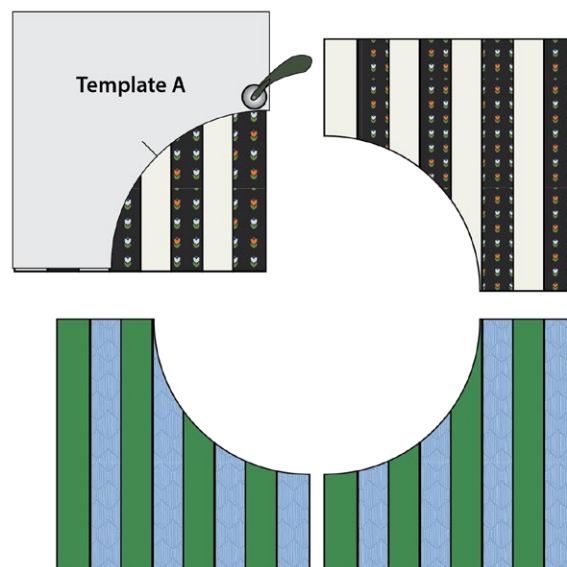


DIAGRAM 6

- Use **Template B** to cut the quarter circle on 2 (two) SS3 and 2 (two) SS4. Make sure to keep the strip direction horizontal as shown in the diagram.

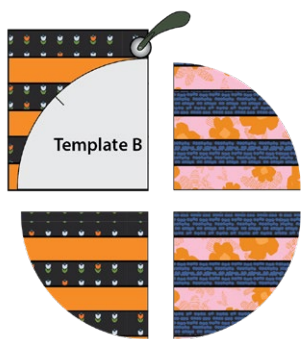


DIAGRAM 7

- Sew 1 (one) SS1 to 1 (one) SS3 , 1 (one) SS1 to 1 (one) SS4, 1 (one) SS2 to 1 (one) SS3 and 1 (one) SS2 to 1 (one) SS4.

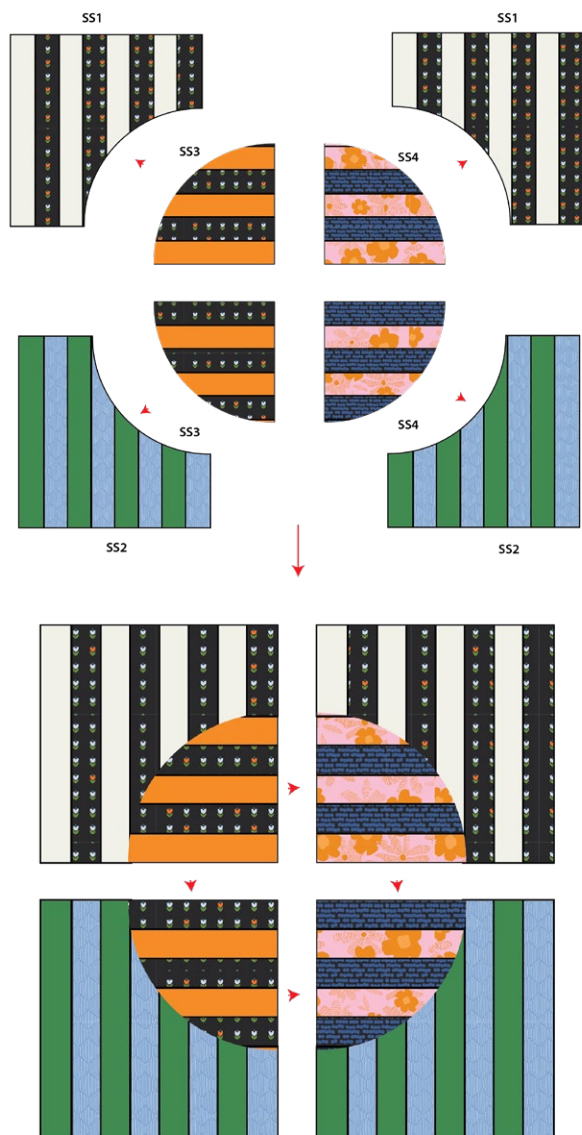


DIAGRAM 8

QUILT TOP

- Sew the 4 (four) parts together to complete the quilt top.

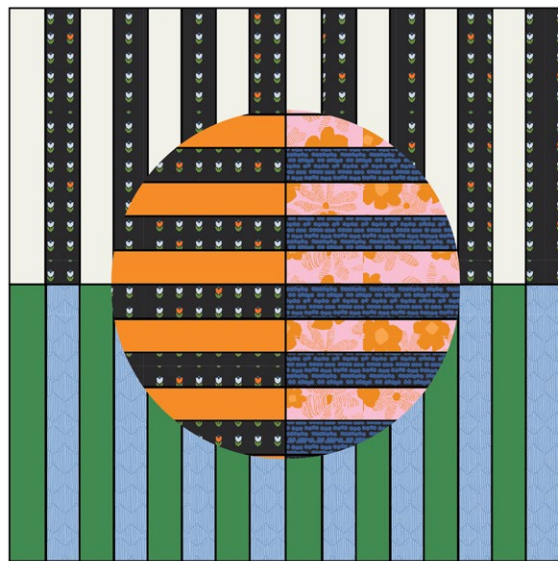


DIAGRAM 9

QUILT ASSEMBLY

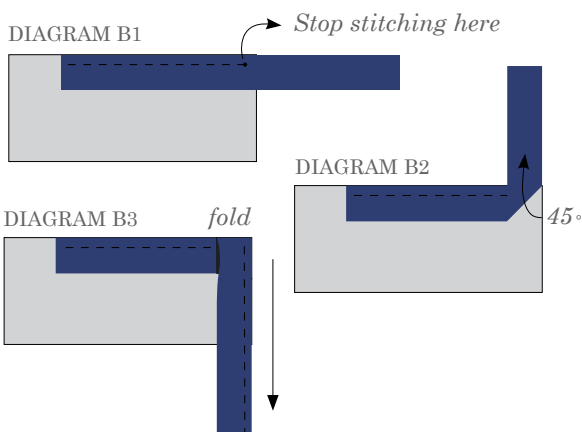
Sew rights sides together.

- Place **BACKING FABRIC** on a large surface wrong side up. Stretch it with masking tape against that surface.
- Place **BATTING** on top of backing fabric.
- Place **TOP** on top of the batting with right side facing up. Smooth away wrinkles using your hands.
- Pin all layers together and baste with basting thread, using long stitches. You can also use safety pins to join the layers.
- Machine or hand quilt starting at the center and working towards the corners. Remember that quilting motifs are a matter of personal preference. Have fun choosing yours!
- After you finished, trim excess of any fabric or batting, squaring the quilt to proceed to bind it.

BINDING

Sew rights sides together.

- Cut enough strips $2\frac{1}{2}$ " wide by the width of the fabric **H** to make a final strip 265" long. Start sewing the binding strip in the middle of one of the sides of the quilt, placing the strip right side down and leaving an approximated 5" tail. Sew with $\frac{1}{4}$ " seam allowance (using straight stitch), aligning the strip's raw edge with the quilt top's raw edge.
- Stop stitching $\frac{1}{4}$ " before the edge of the quilt (DIAGRAM B 1). Clip the threads. Remove the quilt from under the machine presser foot. Fold the strip in a motion of 45° and upward, pressing with your fingers (DIAGRAM B2). Hold this fold with your finger, bring the strip down in line with the next edge, making a horizontal fold that aligns with the top edge of the quilt (DIAGRAM B3). Start sewing at $\frac{1}{4}$ " of the border, stitching all the layers. Do the same in the four corners of the quilt.
- Stop stitching before you reach the last 5 or 6 inches. Cut the threads and remove the quilt from under the machine presser foot. Lay the loose ends of the binding flat along the quilt edge, folding the ends back on themselves where they meet. Press them together to form a crease. Using this crease as the stitching line, sew the two open ends of the binding with right sides together (you can help yourself marking with a pencil if the crease is difficult to see).
- Trim seam to $\frac{1}{4}$ " and press open. Complete the sewing. Turn binding to back of the quilt, turn raw edge inside and stitch by hand using blind stitch.



- If you are using our 2.5 edition (binding fabric), click or scan this QR code to see a tutorial on how to use this specialty fabric.



Template a 2



A minimalist black and white graphic design. The background is a light gray. A thick black horizontal bar runs across the top. Another thick black horizontal bar runs across the bottom. On the left side, there are three thick black horizontal bars stacked vertically. On the right side, there are three thick black horizontal bars stacked vertically. In the center of the page, the text "Template a 4" is written in a simple, black, sans-serif font. At the bottom center, there are four small, overlapping circles arranged in a horizontal row.

A minimalist black and white graphic design. On the left side, there is a vertical stack of four thick horizontal bars. In the center of the page, the text "Template a 5" is displayed in a clean, sans-serif font. At the bottom of the page, there is a horizontal row of five circles. The entire design is set against a plain white background.

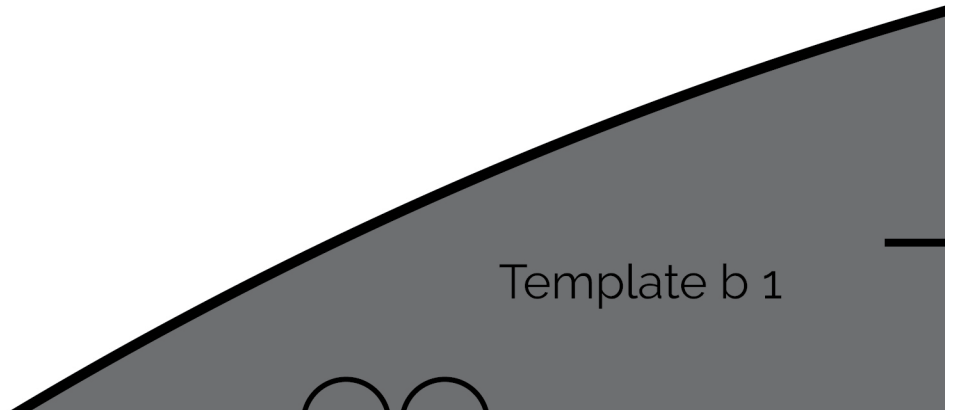
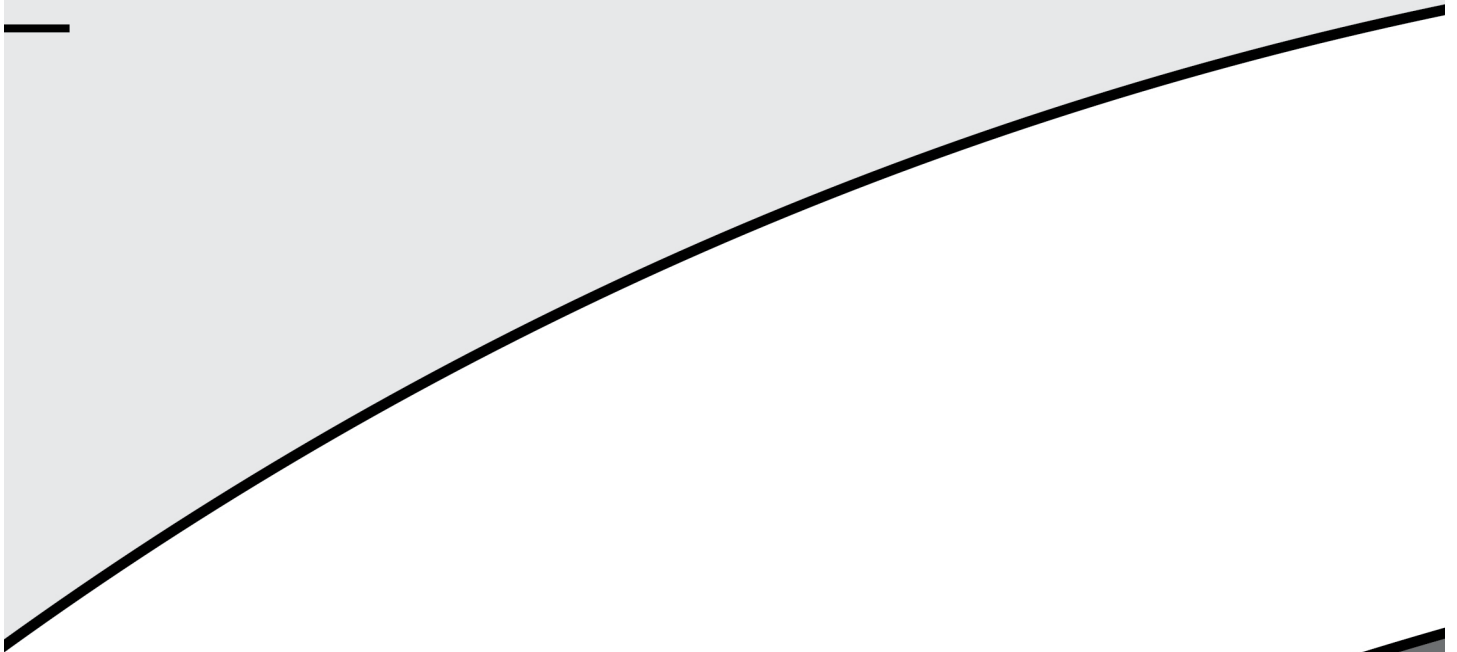




Template a 8

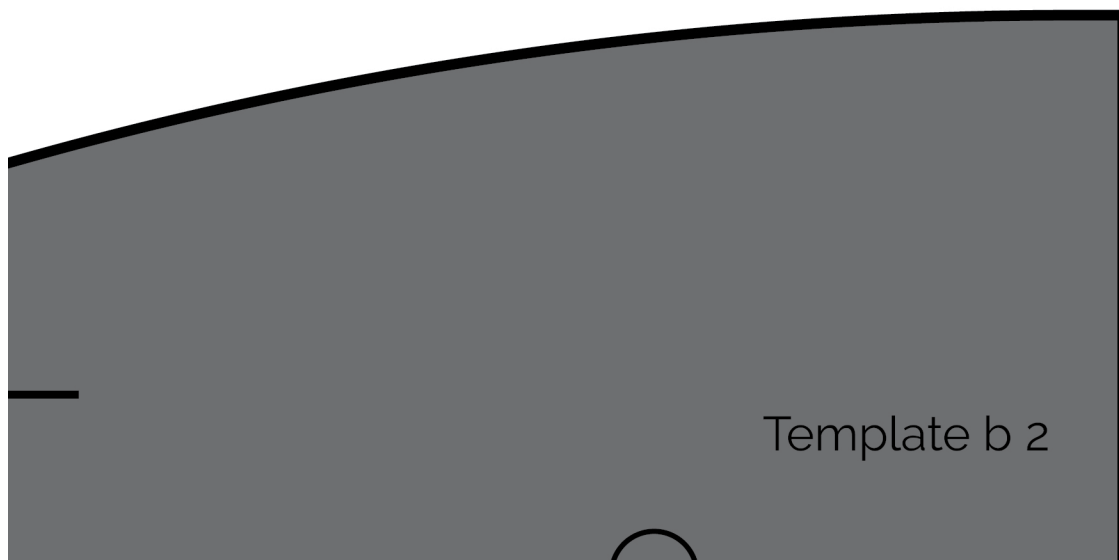
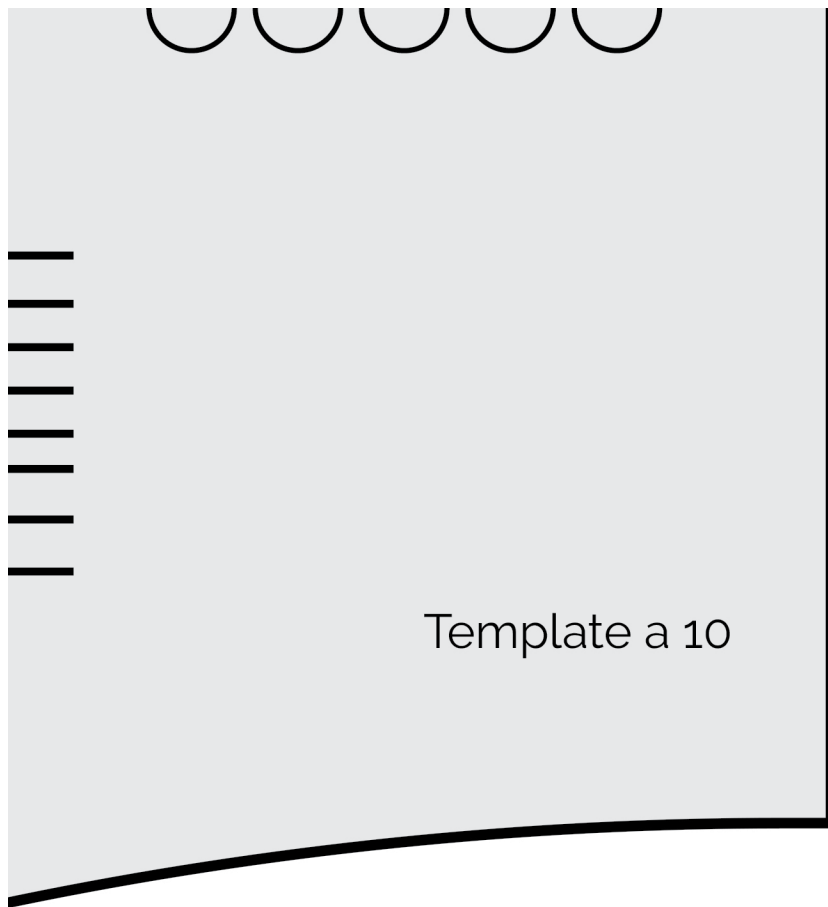


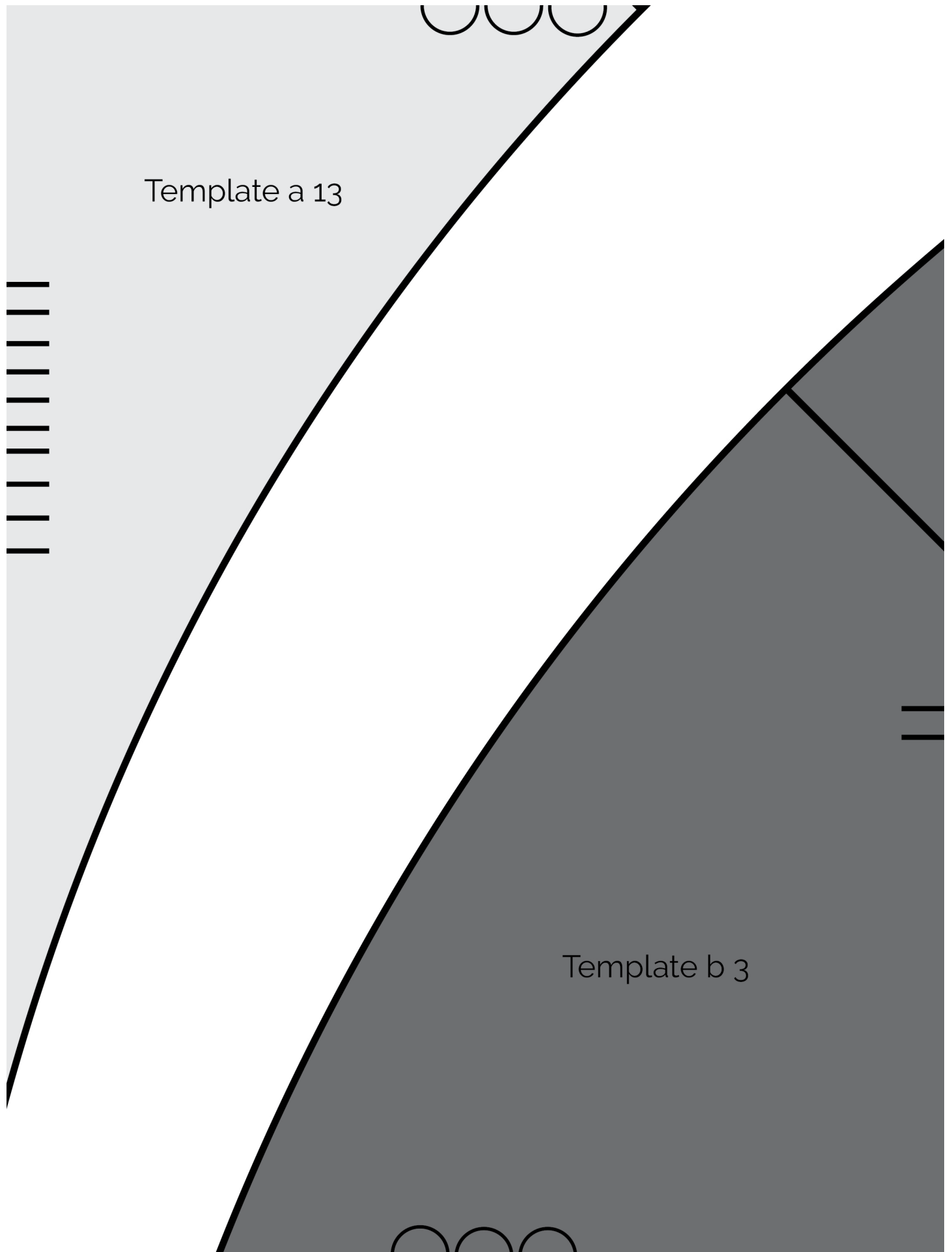
Template a 9



Template b 1

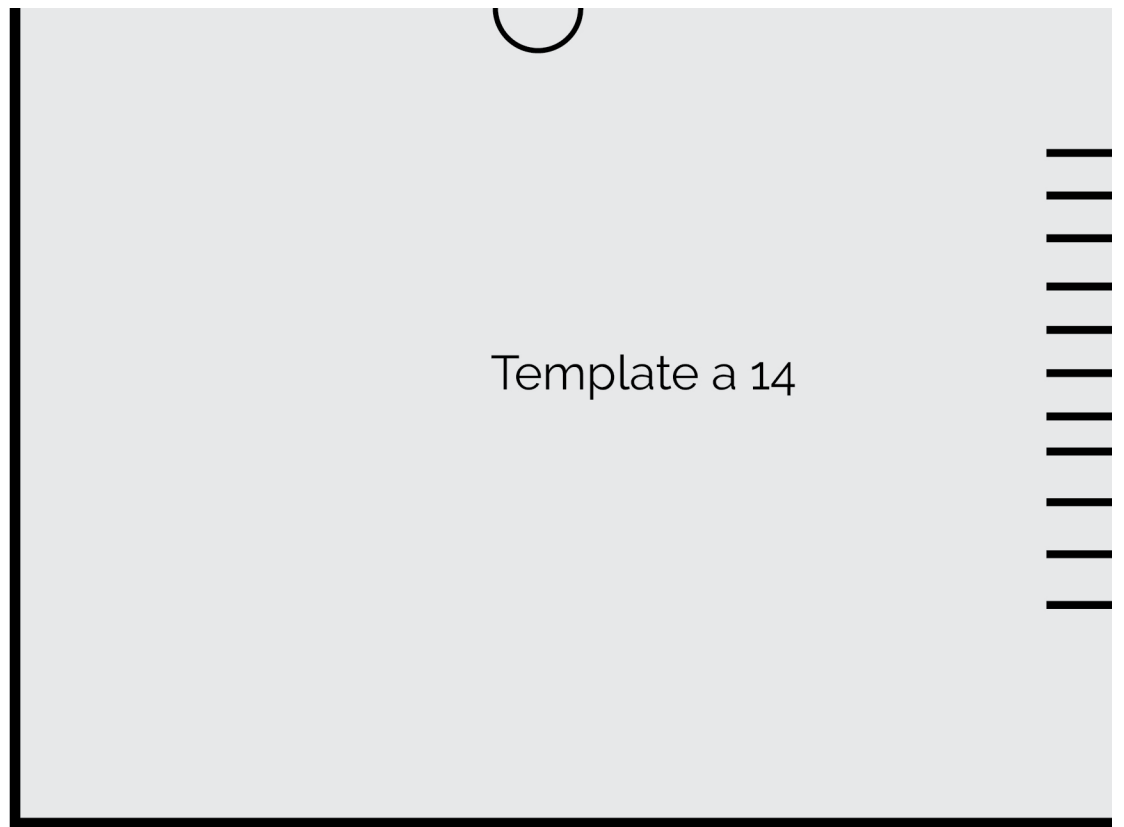






Template b 4







Template b 6



Template b 7



Template b 8

XXXXXXXXXXXXXXXXXXXXXXXXXXXXXXXXXXXX

Congratulations
& enjoy

XXXXXXXXXXXXXXXXXXXXXXXXXXXXXXXXXXXX



artgalleryfabrics.com

NOTE: While all possible care has been taken to ensure the accuracy of this pattern, We are not responsible for printing errors or the way in which individual work varies.

Please read instructions carefully before starting the construction of this quilt. If desired, wash and iron your fabrics before starting to cut.

© 2025 Courtesy of Art Gallery Quilts LLC. All Rights Reserved.