

XXXXXX

BOHEMIA EDITION



x x x x x x x x x x x x x x x x x x



ATACAMA

BOHEMIA EDITION

CLUTCH DESIGNED BY AGFstudio

THE CUR8TOR

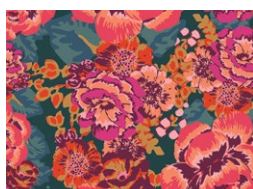
Bohemia

FABRICS DESIGNED BY AGF STUDIO



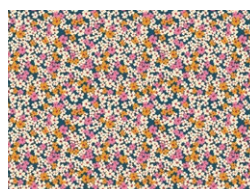
Fabric A

CUR8BH107
PARAKEET PARADISE



Fabric B

CUR8BH100
ACQUA DI ROSE MYSTIC



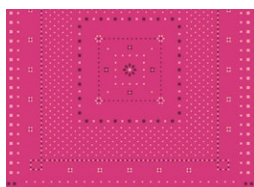
Fabric C

CUR8BH103
RETRO PRAIRIE MIRAGE



Fabric D

CUR8BH105
BOHO STITCHES AMBER



Fabric E

CUR8BH101
HANDKERCHIEF FUCHSIA



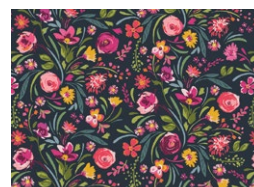
Fabric F

PE-517
EVERGREEN



Fabric G

CUR8BH104
BOHEMIAN ENIGMA



Fabric H

CUR8BH102
GRACEFUL BLOOMS



ART GALLERY FABRICS®

© 2025 Courtesy of Art Gallery Quilts LLC. All Rights Reserved.

artgalleryfabrics.com

ATACAMA

BOHEMIA EDITION

FINISHED SIZE | 9" x 7"

FABRIC REQUIREMENTS

Fabric A	CUR8BH107	Fat 8.
Fabric B	CUR8BH100	Fat 8.
Fabric C	CUR8BH103	Fat 8.
Fabric D	CUR8BH105	Fat 8.
Fabric E	CUR8BH101	Fat 8.
Fabric F	PE-517	Fat 8.
Fabric G	CUR8BH104	Fat 8.
Fabric H	CUR8BH102	Fat 8.

LINING FABRIC

Fabric **G** CUR8BH104 (Included)

EXTRA MATERIALS

10" zipper

CUTTING DIRECTIONS

*¼" seam allowances are included.
WOF means width of fabric.*

- One (1) template #1 from fabric **A**
- One (1) template #5 from fabric **B**
- One (1) template #2 from fabric **C**
- One (1) template #3 from fabric **D**
- One (1) template #4 from fabric **E**
- One (1) 1½" x 5" strip from fabric **F**
- One (1) 1½" x 9" strip from fabric **F**
- One (1) 1½" x 10" strip from fabric **F**
- One (1) 1½" x 11" strip from fabric **F**
- Two (2) 10½" x 8½" rectangles of fabric **G** (Lining)
- One (1) 10½" x 8½" rectangle of fabric **H** (Backing)

CONSTRUCTION

Sew all rights sides together with ¼" seam allowance.

- Take the template #5 from fabric **B** and one (1) 1½" x 11" strip from fabric **F**, sew the strip to the template #5 as shown in the diagram below.

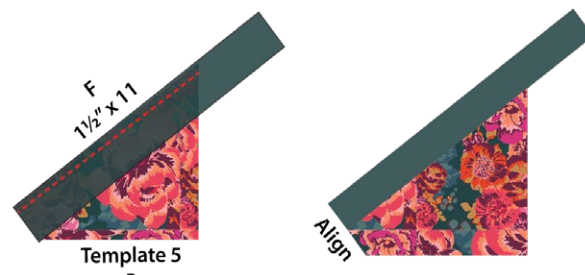


DIAGRAM 1

- Take the template #3 from fabric **D** and sew it as shown in the diagram below.



DIAGRAM 2

- Take one (1) 1½" x 10" strip and sew it as shown in the diagram below.
- Press and set aside.

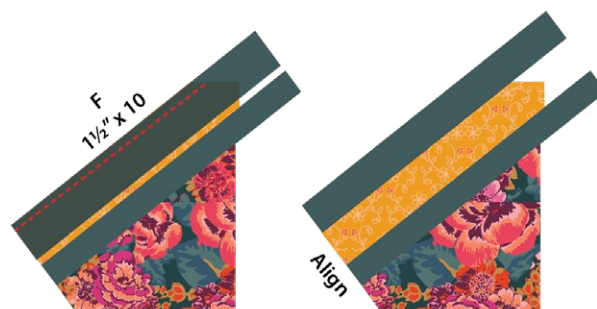


DIAGRAM 3

- Take the template #1 from fabric **A** and one (1) 1½" x 5" strip from fabric **F**, sew the strip to the template #1 as shown in the diagram below.



DIAGRAM 4

- Take the template #2 from fabric **C** and sew it as shown in the diagram below.
- Press.



DIAGRAM 5

- Sew both units together as shown in the diagram below.
- Press.

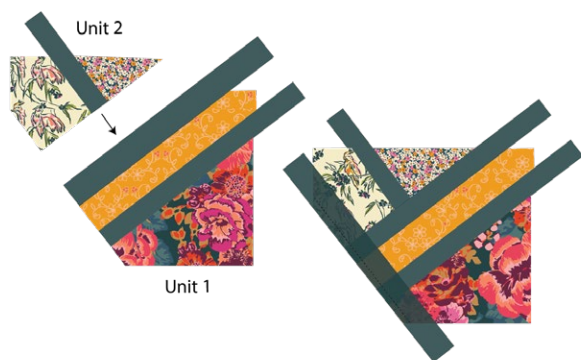


DIAGRAM 6

- Take the template #4 from fabric **E** and sew it as shown in the diagram below.
- Press.



DIAGRAM 7



DIAGRAM 8

- Trim the excess fabric to create a $10\frac{1}{2}$ " x $8\frac{1}{2}$ " rectangle.
- Quilt as desired.

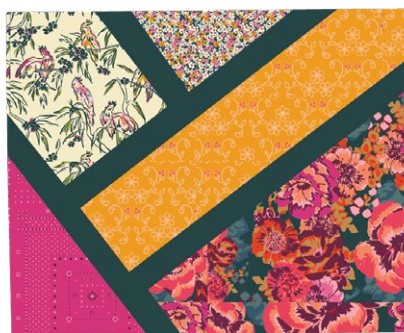


DIAGRAM 9

ASSEMBLING THE CLUTCH

- Change your sewing foot for the zipper foot.
- Place one (1) $10\frac{1}{2}$ " x $8\frac{1}{2}$ " rectangle from fabric **G** right side up on your work surface.
- Center the zipper, right side up, on top of the fabric.
- Place your Patched fabric piece on top of the lining/zipper, right side down.
- you should have lining face up, zipper face up, main face down.
- Stitch along the edge of the zipper.



DIAGRAM 10

- Fold back and press the main fabric and the lining to expose the finished edges along the zipper.

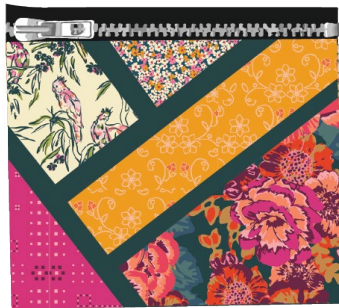


DIAGRAM 11

- Open the zipper and repeat the previous steps for the other side, but this time use one (1) 10½" x 8½" rectangle from fabric **G** and one (1) 10½" x 8½" rectangle from fabric **B** for the backing.



DIAGRAM 12

- Separate the Patched piece together with the backing and then the lining pieces together on each side of the bag fold the "flaps" so that you are matching the exterior fabrics right sides together, and the lining fabrics right sides together.
- Pin in place to form one large rectangle with exterior pieces to one side and lining pieces to the other side.
- The red line in the picture above shows your stitching line.
- Stitch, with ½" seam allowance, all the way around the clutch, leaving a 4-5 inch opening in the LINING side of the bag for turning.



DIAGRAM 13

- Turn the clutch inside out and handstitch the lining opening.
- Press.



DIAGRAM 14

XXXXXXXXXXXXXXXXXXXXXXXXXXXXXXXXXXXX

*Congratulations
& enjoy*

XXXXXXXXXXXXXXXXXXXXXXXXXXXXXXXXXXXX



artgalleryfabrics.com

NOTE: While all possible care has been taken to ensure the accuracy of this pattern, We are not responsible for printing errors or the way in which individual work varies.

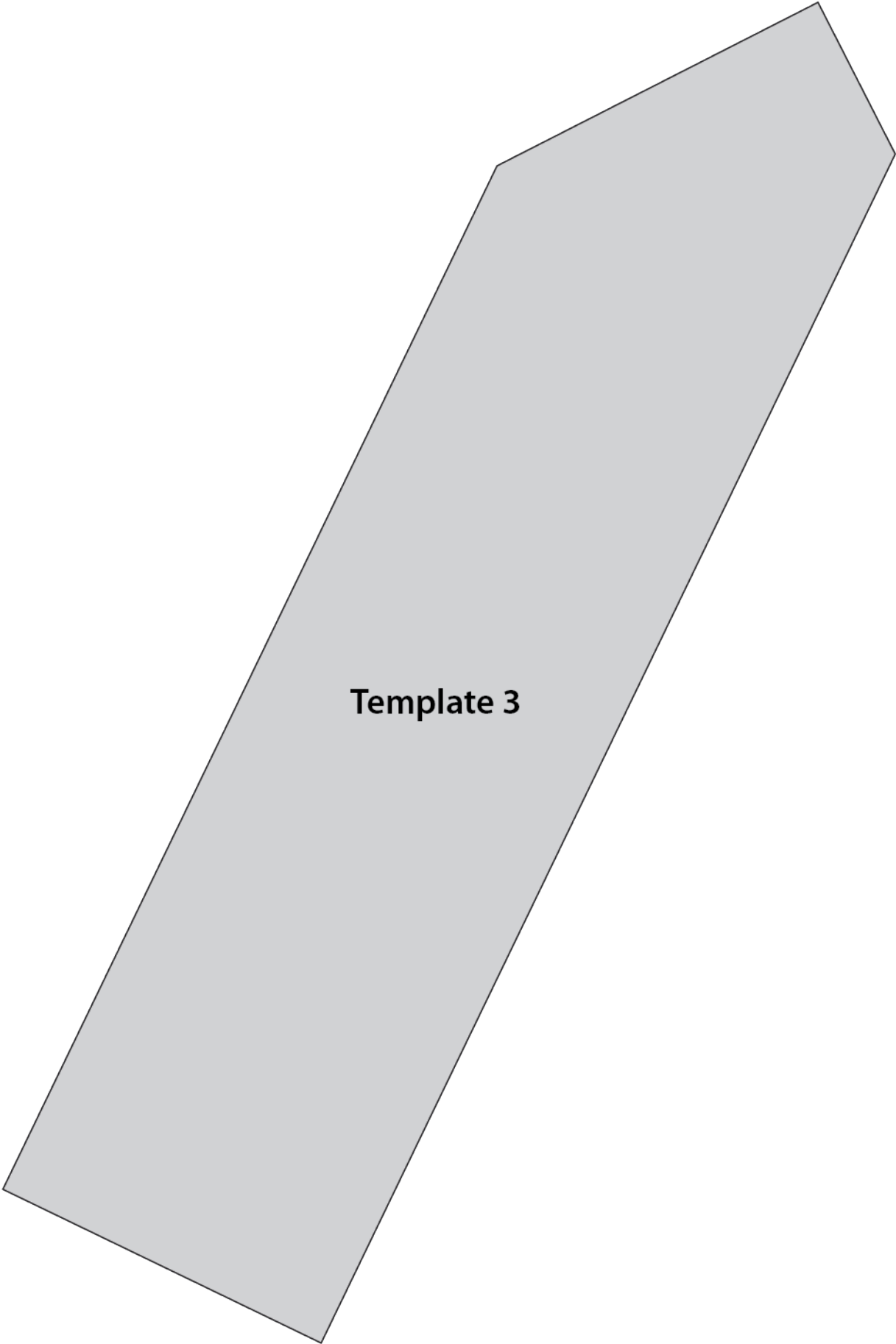
Please read instructions carefully before starting the construction of this quilt. If desired, wash and iron your fabrics before starting to cut.



Template 2

Template 4

XX



Template 3

Template 5