



Arbor

BOTANICA EDITION



FREE PATTERN



Arbor

BOTANICA EDITION

QUILT DESIGNED BY *AGFstudio*

THE CUR8TOR

Botanica

FABRICS DESIGNED BY AGF STUDIO



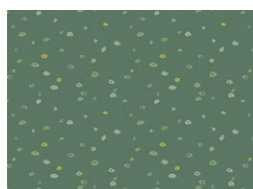
Fabric A

PE-496
CRYSTALLINE



Fabric B

PE-423
APPLETINI



Fabric C

CUR8BT206
SEED SCATTER



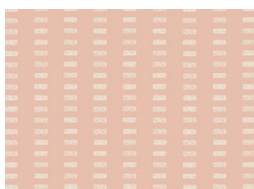
Fabric D

CUR8BT207
BRANCH REFLECTIONS



Fabric E

PE-505
BLUSHING



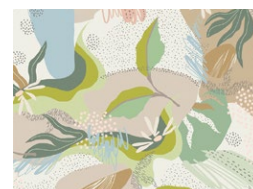
Fabric F

CUR8BT201
BRICK ROAD BLUSH



Fabric G

CUR8BT204
MOMENT OF ZEN AQUA



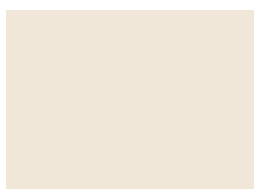
Fabric H

CUR8BT200
BOTANICAL BREEZE



Fabric I

CUR8BT202
FOLIAGE DANCE



Fabric J

PE-540
COCONUT MILK



Fabric K (Binding)

CUR8BT203
WHITE NOISE FRESH



BACKING

CUR8BT205
SPRINKLED SPRIGS



Fabric I

- Cut nine (9) leaves.
- Cut one (1) 1½" x WOF strips, then:
 - Sub-cut into (3) 1½" x 6½" strips.

Fabric J

- Cut twelve (12) 6½" x WOF strips, then:
 - Sub-cut into (72) 6½" squares.
- Cut three (3) 4½" x WOF strips, then:
 - Sub-cut two (2) 4½" x 21" strips.
- Cut seven (7) 2½" x WOF strips, then:
 - Sub-cut five (5) 2½" x 13½" strips.

Fabric K

- Cut six (6) 2½" x WOF strips. (Binding)

CONSTRUCTION

Sew all rights sides together with ¼" seam allowance.

Freezer Paper Appliqué Method

Prepare the Templates:

- Print the leaf template, cut it out, and trace it onto the matte side of freezer paper. Cut out the traced shape.
- Make at least three templates to begin with. Templates can be reused multiple times; create new ones as needed if they lose their stickiness.
- For a sturdier template, press two pieces together (sticky side to matte side) so one side remains sticky.

Prepare the Fabric

- Press the template onto the wrong side of the fabric.
- Cut around the template, leaving a ¼ seam allowance. With the template still attached, begin pressing the fabric edges over the paper. You may spray starch to help the fabric hold its shape after pressing. Once all edges are turned and the fabric has cooled, gently peel off the paper template for reuse.

Appliqué the Leaves

- Align the leaf appliqué along the diagonal of the Fabric J squares. To find the diagonal, either press the square in half diagonally or draw a line using a fabric marking pen. Center the leaf on the square, ensuring the tips stay out of the ¼ seam allowance.

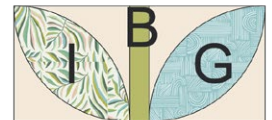
Finish the Blocks

- Continue this process until all fabric leaves are sewn onto the Fabric J squares.
- Once you have sewn all the leaves to the backing squares gather the short strips and begin to assemble them into the Leaf-Stem-Leaf combinations as shown in the diagram. Letters in the combination diagrams stand for the fabric letters.
- Make three of each combination. (DIAGRAM 1)

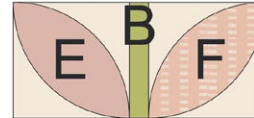
Combination 1 (x3)



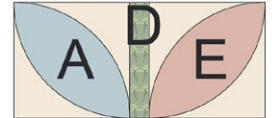
Combination 7 (x3)



Combination 2 (x3)



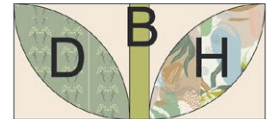
Combination 8 (x3)



Combination 3 (x3)



Combination 9 (x3)



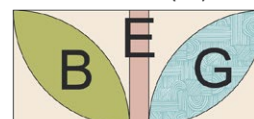
Combination 4 (x3)



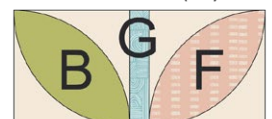
Combination 10 (x3)



Combination 5 (x3)



Combination 11 (x3)



Combination 6 (x3)



Combination 12 (x3)



DIAGRAM 1

- Arrange the combinations into columns according to the assembly diagram (DIAGRAM 2) and sew the blocks together.

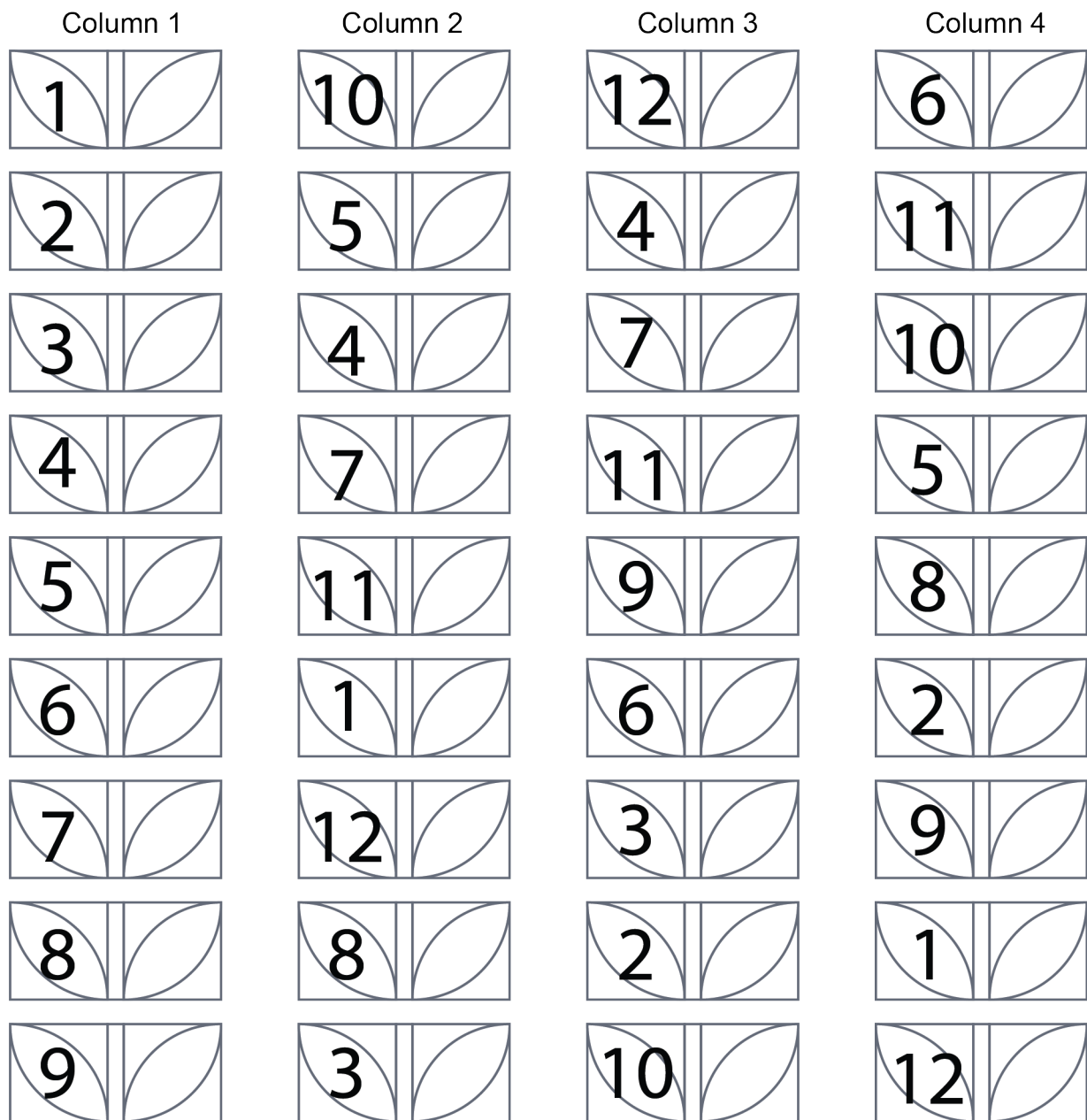


DIAGRAM 2

QUILT TOP

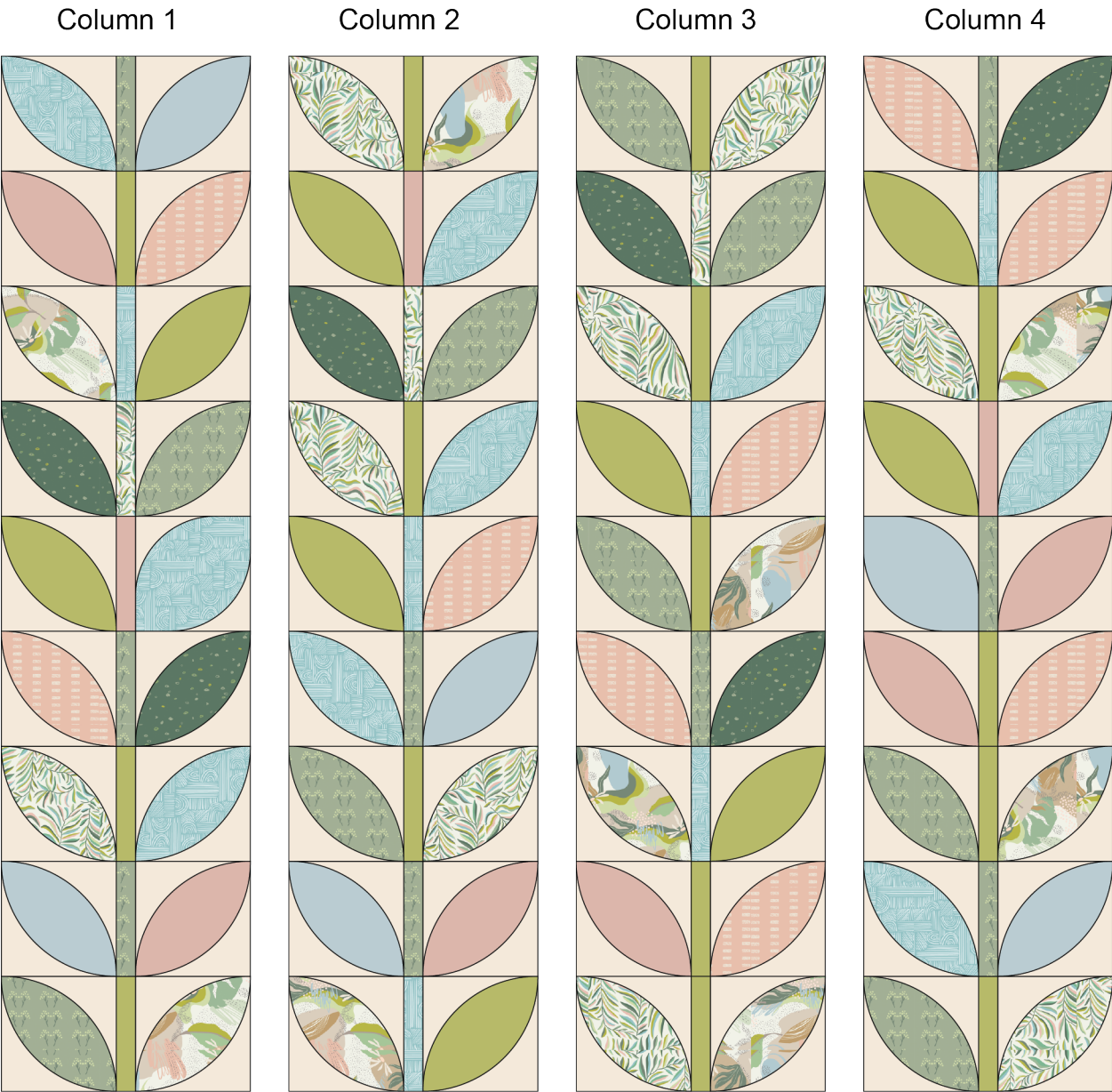


DIAGRAM 3

- Sew one (1) 2½" x 42" strip to one (1) 2½" x 13" strip from Fabric J. The resulting strip will measure 2½" x 54½". Make a total of five strips.

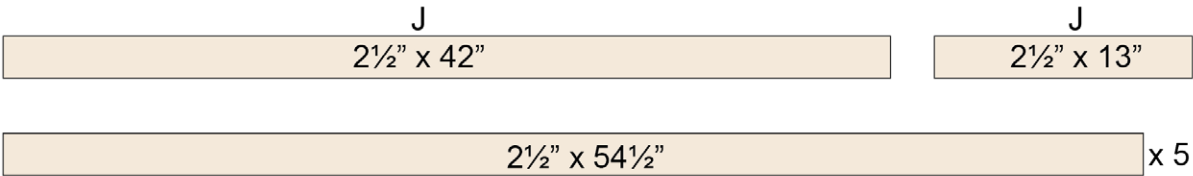


DIAGRAM 4

- Sew the columns together, placing the five (5) $2\frac{1}{2}" \times 54\frac{1}{2}"$ strips between them as shown.

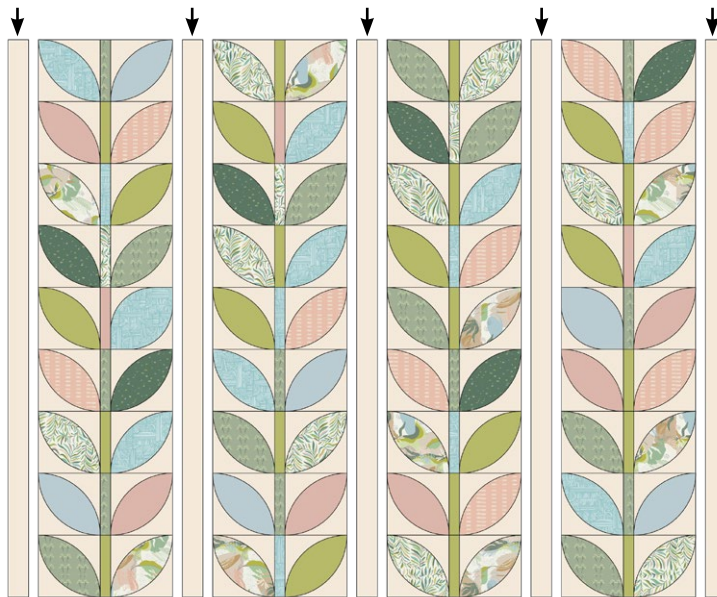


DIAGRAM 5

- Sew one (1) $4\frac{1}{2}" \times 42"$ strip to one (1) $4\frac{1}{2}" \times 21"$ strip from Fabric J. The resulting border strip will measure $4\frac{1}{2}" \times 62\frac{1}{2}"$. Make a total of two strips.

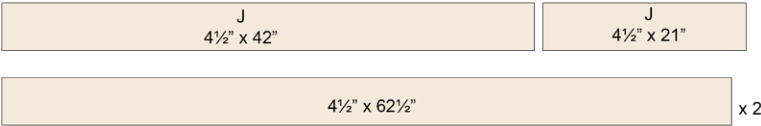


DIAGRAM 6

- Sew the two (2) $4\frac{1}{2}" \times 62\frac{1}{2}"$ border strips to the top and bottom, as shown in the diagram. Quilt as desired.



DIAGRAM 7

QUILT ASSEMBLY

Sew rights sides together.

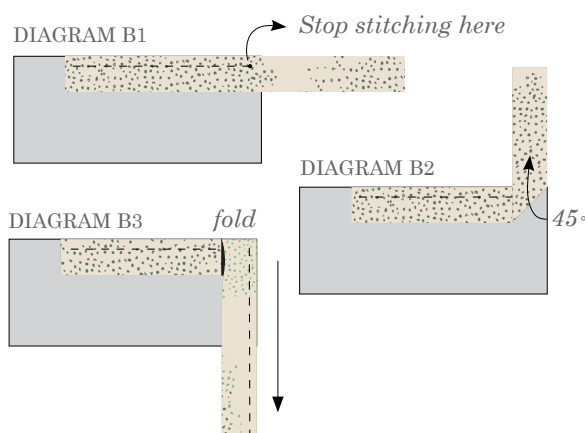
- Place BACKING FABRIC on a large surface wrong side up. Stretch it with masking tape against that surface.
- Place BATTING on top of backing fabric.
- Place TOP on top of the batting with right side facing up. Smooth away wrinkles using your hands.
- Pin all layers together and baste with basting thread, using long stitches. You can also use safety pins to join the layers.
- Machine or hand quilt starting at the center and working towards the corners. Remember that quilting motifs are a matter of personal preference. Have fun choosing yours!
- After you finished, trim excess of any fabric or batting, squaring the quilt to proceed to bind it.

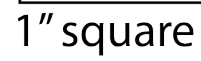
BINDING

Sew rights sides together.

- Cut enough strips $2\frac{1}{2}$ " wide by the width of the fabric **K** to make a final strip 260" long. Start sewing the binding strip in the middle of one of the sides of the quilt, placing the strip right side down and leaving an approximated 5" tail. Sew with $\frac{1}{4}$ " seam allowance (using straight stitch), aligning the strip's raw edge with the quilt top's raw edge.
- Stop stitching $\frac{1}{4}$ " before the edge of the quilt (DIAGRAM B 1). Clip the threads. Remove the quilt from under the machine presser foot. Fold the strip in a motion of 45° and upward, pressing with your fingers (DIAGRAM B2). Hold this fold with your finger, bring the strip down in line with the next edge, making a horizontal fold that aligns with the top edge of the quilt (DIAGRAM B3). Start sewing at $\frac{1}{4}$ " of the border, stitching all the layers. Do the same in the four corners of the quilt.

- Stop stitching before you reach the last 5 or 6 inches. Cut the threads and remove the quilt from under the machine presser foot. Lay the loose ends of the binding flat along the quilt edge, folding the ends back on themselves where they meet. Press them together to form a crease. Using this crease as the stitching line, sew the two open ends of the binding with right sides together (you can help yourself marking with a pencil if the crease is difficult to see).
- Trim seam to $\frac{1}{4}$ " and press open. Complete the sewing. Turn binding to back of the quilt, turn raw edge inside and stitch by hand using blind stitch.
- If you are using our 2.5 edition (binding fabric), click or scan this QR code to see a tutorial on how to use this specialty fabric.





Seam allowance
not included

XXXXXXXXXXXXXXXXXXXXXXXXXXXXXXXXXXXX

Congratulations
& enjoy

XXXXXXXXXXXXXXXXXXXXXXXXXXXXXXXXXXXX



artgalleryfabrics.com

NOTE: While all possible care has been taken to ensure the accuracy of this pattern, We are not responsible for printing errors or the way in which individual work varies.

Please read instructions carefully before starting the construction of this quilt. If desired, wash and iron your fabrics before starting to cut.

© 2025 Courtesy of Art Gallery Quilts LLC. All Rights Reserved.