

X
X
X
X
X
X
X
X
X
X
X
X

A woman with long, wavy blonde hair is shown from the chest up, smiling and looking towards the right. She is wearing a bright yellow bucket hat with a small white floral pattern. Her right hand is raised to her forehead, shielding her eyes from the sun. She is wearing a white, long-sleeved button-down shirt over a light-colored ribbed tank top. A tattoo is visible on her right forearm. She is also wearing a necklace with a small pendant. The background is a lush green garden with various plants and a stone wall.

XXXXXXXXXXXXXXXXXXXXXXXXXXXX



Sunny Brim

BUCKET HAT

MIDSUMMER EDITION

HAT DESIGNED BY AGFstudio

Midsummer

FABRICS DESIGNED BY SHARON HOLLAND



Fabric A
MID38312
HERBAL REMEDY



Fabric B
MID38315
INTERWOVEN GRASS



ART GALLERY FABRICS®

© 2025 Courtesy of Art Gallery Quilts LLC. All Rights Reserved.

Sunny Brim

BUCKET HAT

MIDSUMMER EDITION

FABRIC REQUIREMENTS

Fabric **A** MID38312 ½ yd.

Fabric **B** MID38315 ⅝ yd.

EXTRA MATERIALS

Batting Hi-Loft batting ½ yd.

CUTTING DIRECTIONS

¼" seam allowances are included.
WOF means width of fabric.

Fabric A

- Cut 1 (one) Top of the Hat template.
- Cut 1 (one) Brim template.
- Cut 1 (one) Body of the Hat template.

Fabric B

- Cut 1 (one) Top of the Hat template.
- Cut 1 (one) Brim template.
- Cut 1 (one) Body of the Hat template.
- Cut 1 (one) 2½" x WOF strip. (Binding)

CONSTRUCTION

Sew all rights sides together with ¼" seam allowance.

- Begin by sewing the batting pieces to the wrong side of the template pieces from fabric **A**. Sew around ⅛" seam away from the edge to hold the pieces together.

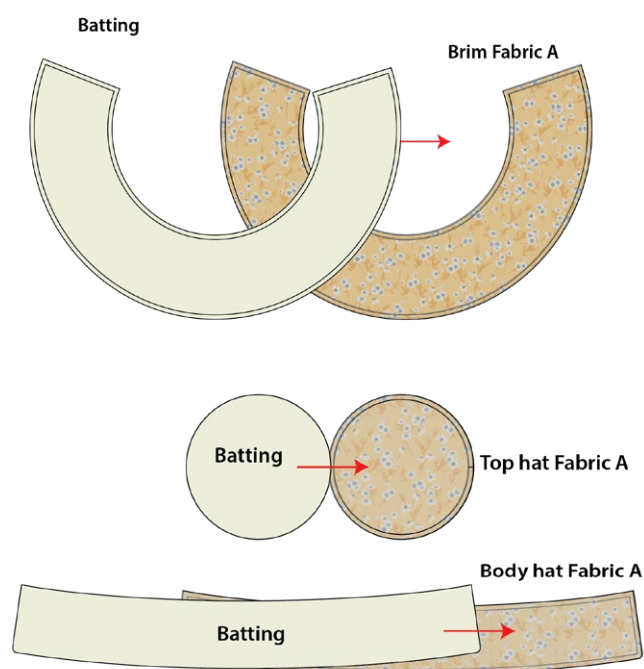


DIAGRAM 1

- Fold the brim on half until the short edges meet, align and sew $\frac{1}{4}$ " away.

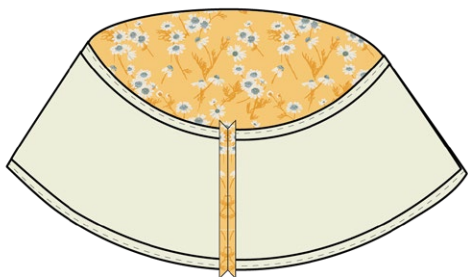


DIAGRAM 2

- Now take the Interior fabric brim and fold it on half until the short edges meet, align and sew $\frac{1}{4}$ " away.

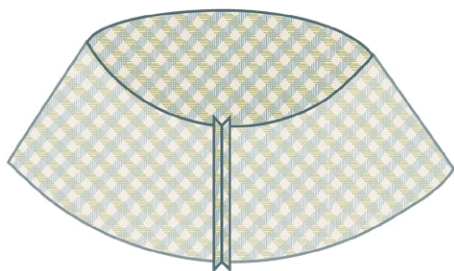


DIAGRAM 3

- Place brim from fabric A inside brim from fabric B right sides together, align them and stitch around the outer edge using $\frac{1}{4}$ " seam allowance.

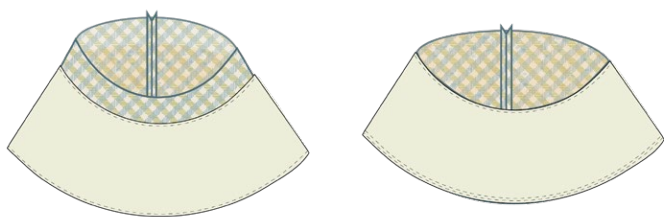


DIAGRAM 4

- Before turning the brim inside out make some notches on the sewn edge to give it some room to turn as circle.
- Turn the brim over and press.
- Quilt if desired.

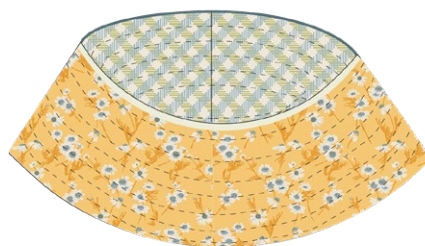
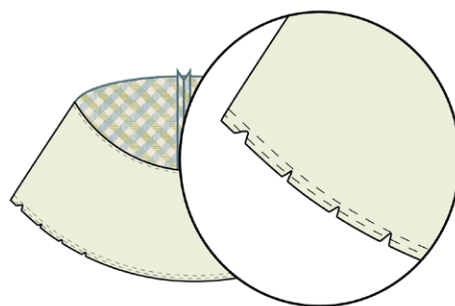


DIAGRAM 5

- Fold the hat body on half until the short edges meet, align and sew $\frac{1}{4}$ " away.
- Sew the top circle on the top edge.

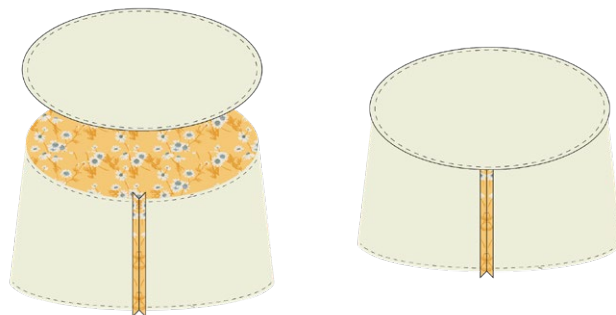


DIAGRAM 6

- Before turning the top of the hat inside out make some notches on the sewn edge to give it some room to turn as circle.
- Turn the hat over and press.

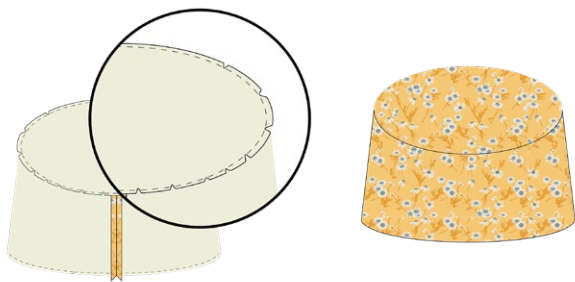


DIAGRAM 7

- Take the top circle and hat body interior pattern pieces from fabric **B**.

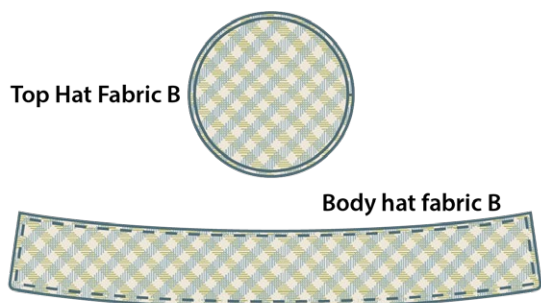


DIAGRAM 8

- Repeat the previous steps to sew the lining together.

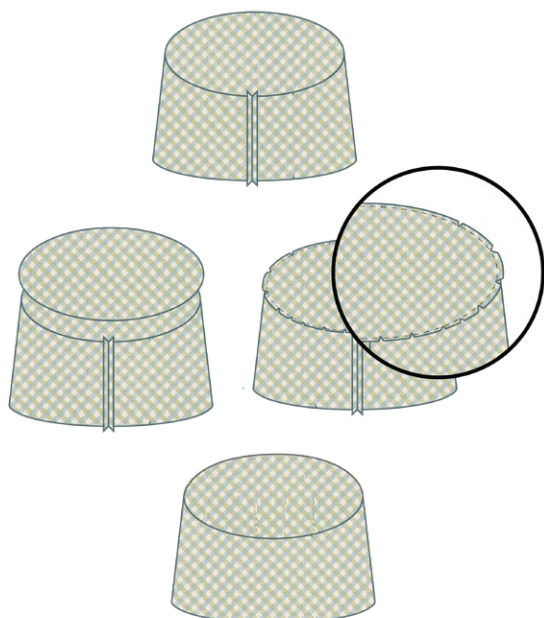


DIAGRAM 9

- Insert the lining inside the exterior hat top, wrong side of fabric and batting facing together.
- Top stitch the top.

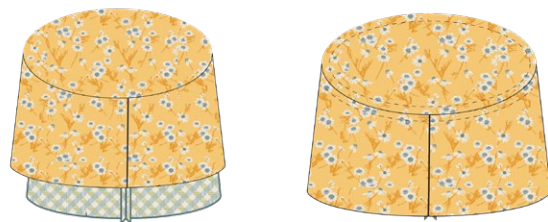


DIAGRAM 10

- Attach the brim to the hat body.

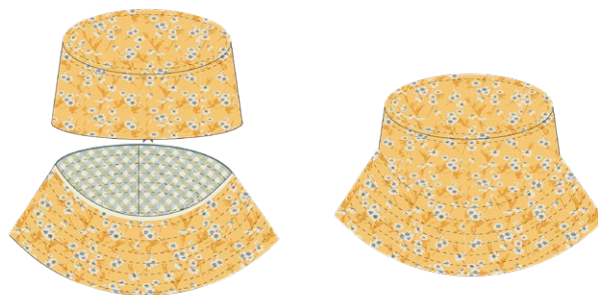


DIAGRAM 11

- Cut 1 (one) 1½" x WOF strip from fabric **B** to use it as a binding to hide the raw exposed edge on the lining side.
- When you are done adding the binding fold it and top stitch.

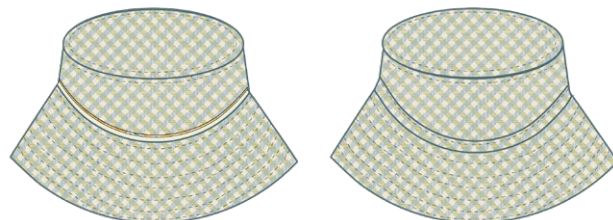


DIAGRAM 12

XXXXXXXXXXXXXXXXXXXXXXXXXXXXXXXXXXXX

*Congratulations
& enjoy*

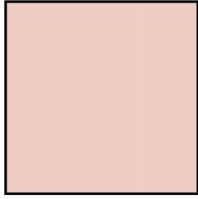
XXXXXXXXXXXXXXXXXXXXXXXXXXXXXXXXXXXX



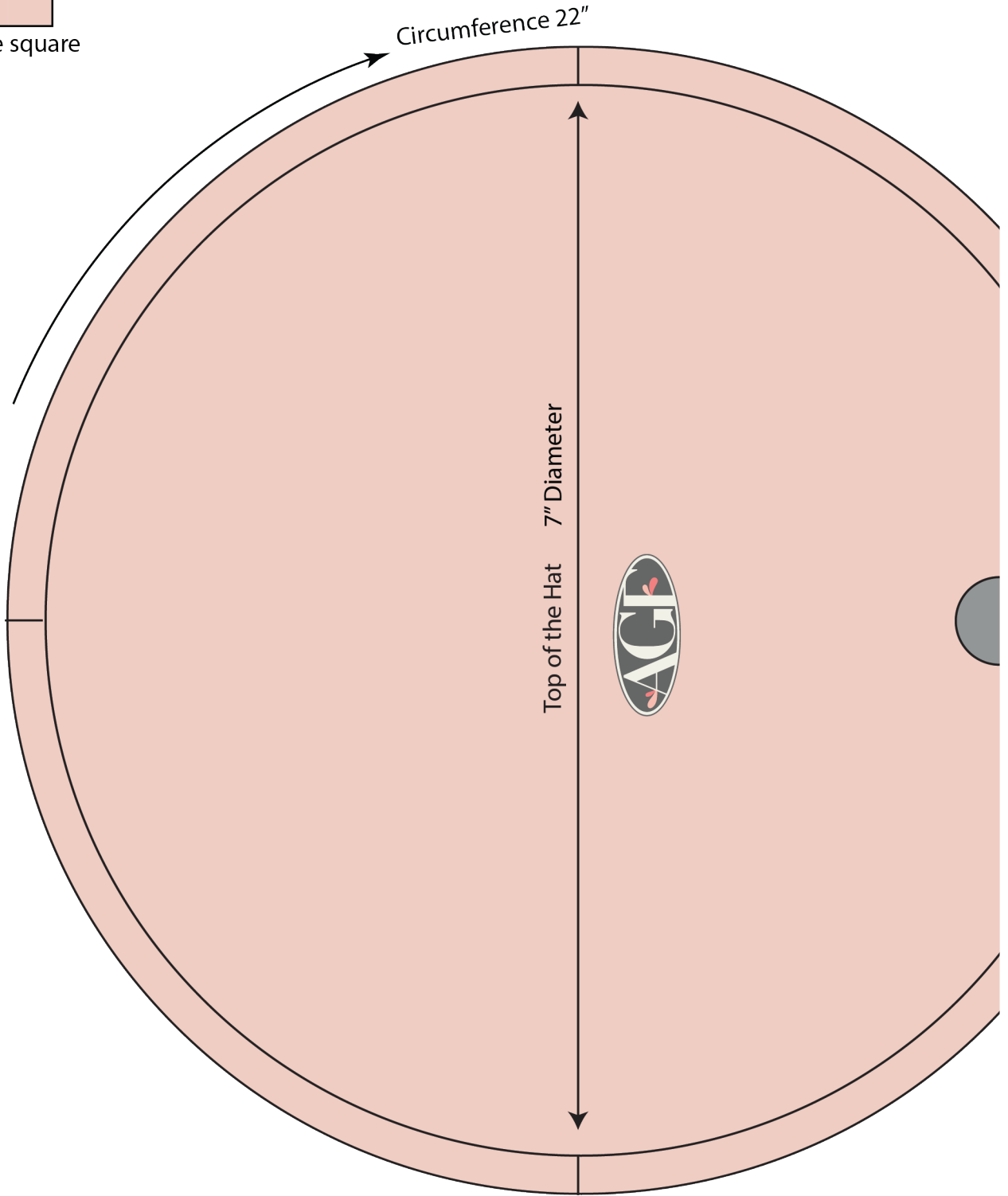
artgalleryfabrics.com

NOTE: While all possible care has been taken to ensure the accuracy of this pattern, We are not responsible for printing errors or the way in which individual work varies.

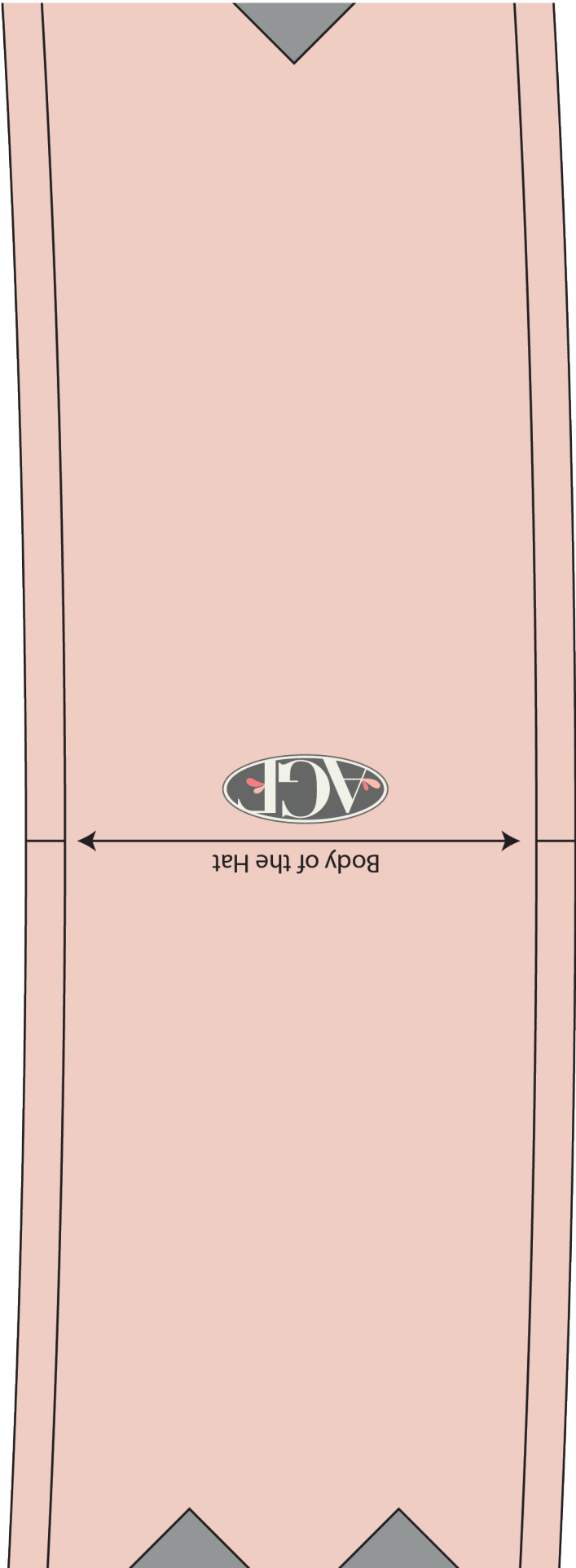
Please read instructions carefully before starting the construction of this quilt. If desired, wash and iron your fabrics before starting to cut.



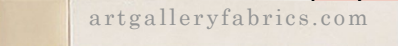
1" sample square

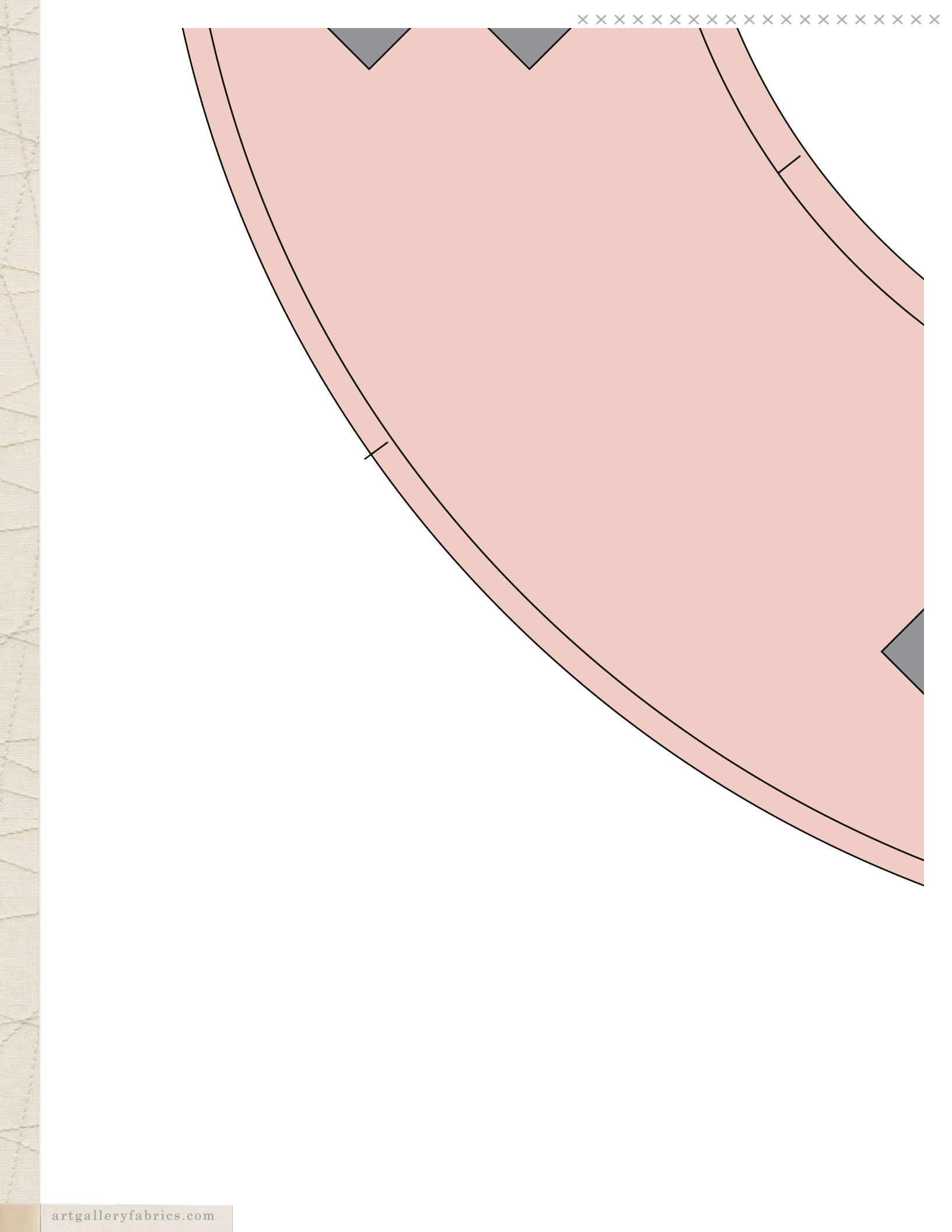


A stylized illustration featuring a pink envelope and a pink circular object. The envelope is tilted and has a grey triangular flap at the bottom. The circular object is partially visible on the left side, with a grey center. The background is white.











A stylized illustration of a red, curved, horn-like shape, possibly a chili pepper or a decorative element. The shape is filled with a solid red color and has a thin black outline. At the top, there is a small black triangle pointing downwards. At the bottom, there is a small black triangle pointing upwards. The shape is curved, with the top part being wider and the bottom part being narrower. There are also some small black lines and dots on the red surface, possibly representing seeds or texture.

