

XXXXXX

## COSTEIRA EDITION



XXXXXXXXXXXXXXXXXXXX





# Sunny

COSTEIRA EDITION

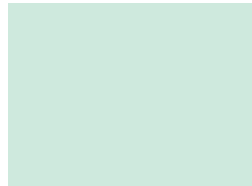
SUNGLASS CASE DESIGNED BY *AGFstudio*

*costeira*

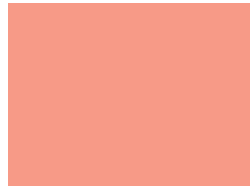
FABRICS DESIGNED BY AGF STUDIO



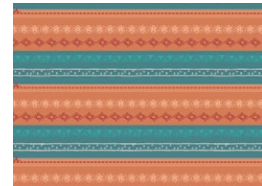
**Fabric A**  
COS77308  
MOSAICO MARINHO COSTA



**Fabric B**  
PE-451  
ICY MINT



**Fabric C**  
PE-450  
GRAPEFRUIT



**Fabric D (Binding)**  
BINLEN75  
SOUTHWEST BOUND

FINISHED SIZE | 75½" x 87½"

## FABRIC REQUIREMENTS

Fabric <b>A</b>	COS77308	F8.
Fabric <b>B</b>	PE-451	F8.
Fabric <b>C</b>	PE-450	F8.
Fabric <b>D</b>	BINLEN75	⅛ yd.

### BINDING FABRIC

Fabric **D** BINLEN75 (Included)

## CUTTING DIRECTIONS

Please ensure that all fabrics are ironed thoroughly before cutting them. ¼" seam allowances are included. WOF means width of the fabric.

### Fabric A

- Cut 1 (one) Back template.
- Cut 1 (one) Front template.

### Fabric B

- Cut 2 (two) Left front templates.
- Cut 1 (one) Right front template.

### Fabric C

- Cut 1 (one) Back template.

### Fabric D

- Cut 1 (one) 2½" x WOF strip (Binding)

## CONSTRUCTION

Sew all rights sides together with ¼" seam allowance.

### Step 1:

- Place batting in between 1 (one) Back template from fabric **A** and 1 (one) from fabric **C**.
- Quilt as desired then trim excess batting and place aside.

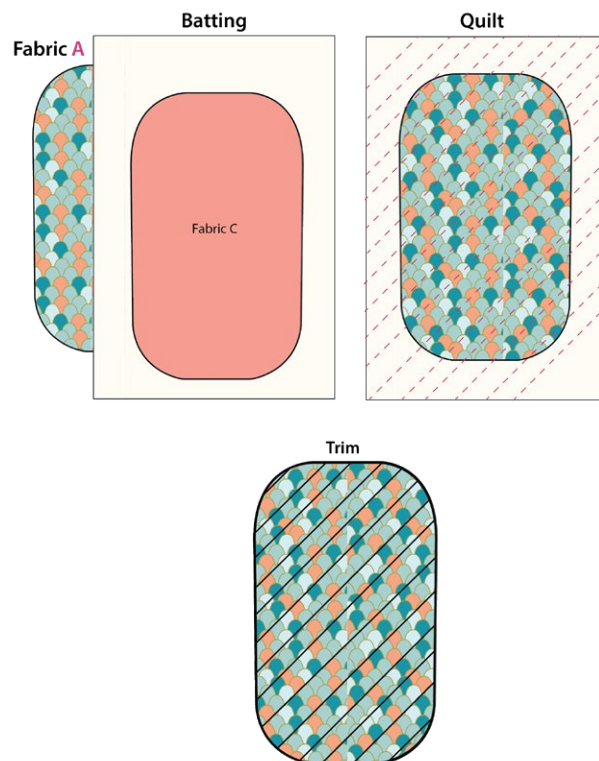


DIAGRAM 1

- Repeat **Step 1** with the 2 (two) left front templates from fabric **B**, then place the binding from fabric **D** on the top part of the quilted piece to clean the edge.

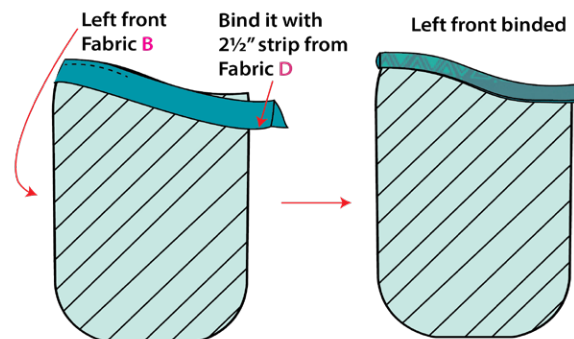


DIAGRAM 2

- Repeat **Step 1** with the right front template from fabric **A** and **B**, then place the binding from fabric **D** on the top part of the quilted piece to clean the edge.

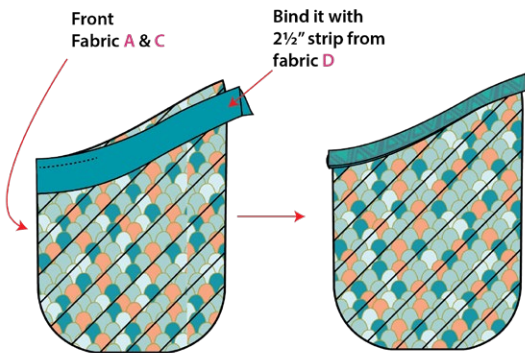


DIAGRAM 3

- Arrange the finished piece as shown on diagram below and base stitch all around it,

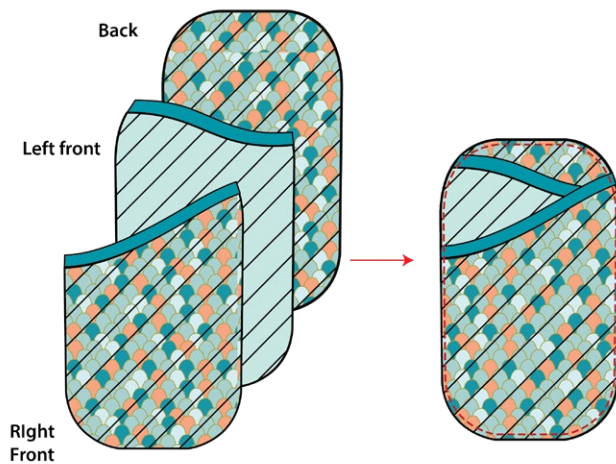
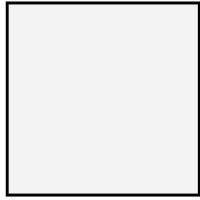


DIAGRAM 4

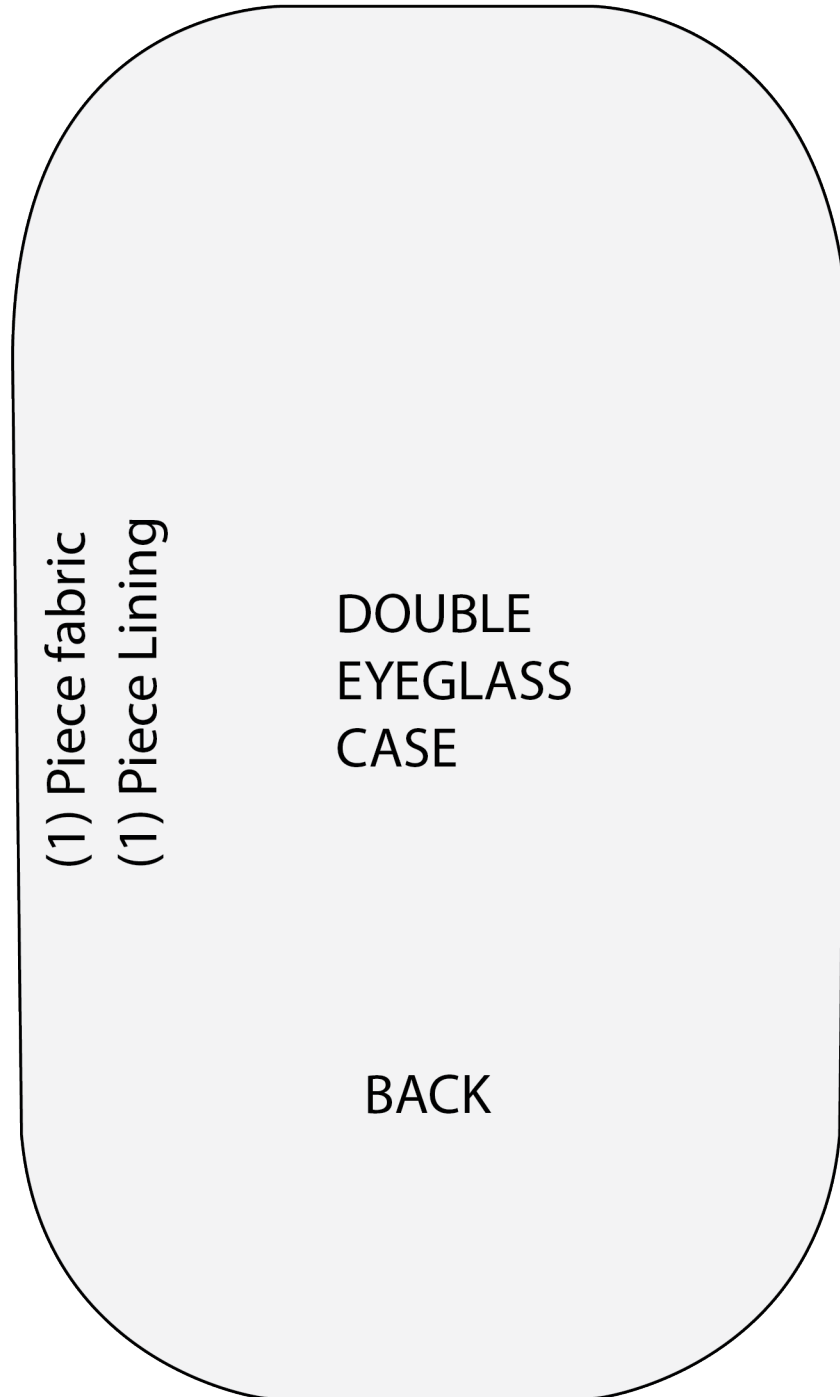
- Using the 2 1/2" strip from fabric **D**, bind around the sewn piece to finish your sunglass case.



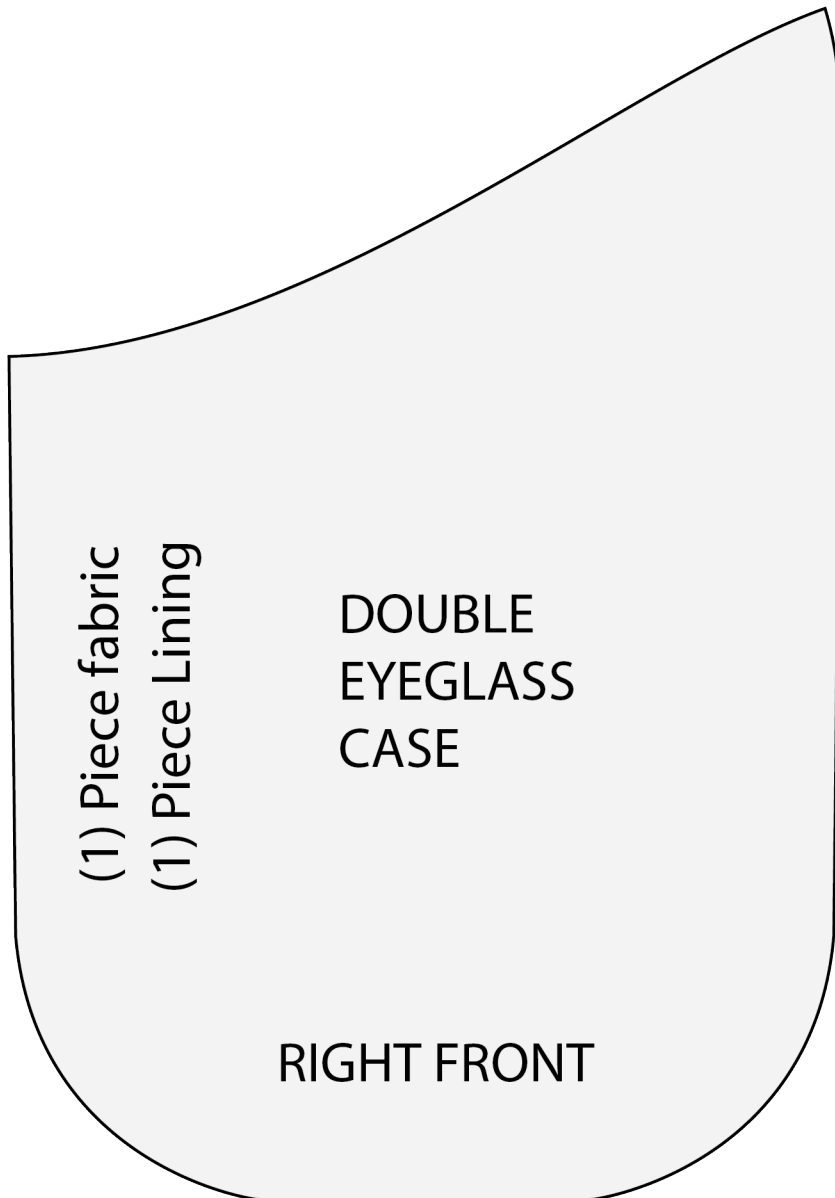
DIAGRAM 5



1" sample square







(1) Piece fabric  
(1) Piece Lining

DOUBLE  
EYEGLASS  
CASE

LEFT FRONT

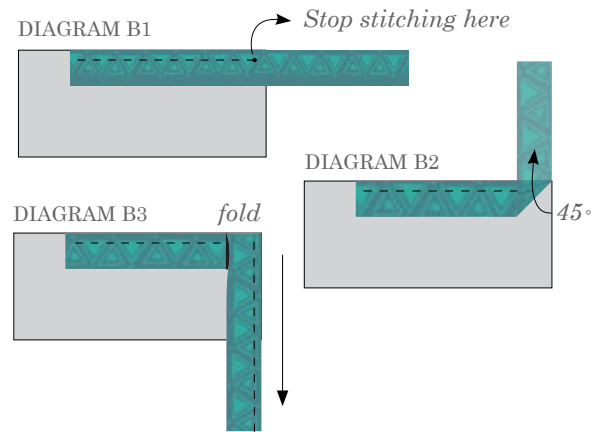
# DOUBLE EYEGLASS CASE

LEFT FRONT

## BINDING

*Sew rights sides together.*

- Cut enough 2½" wide strips by the width of the fabric **D** to make a final strip 336" long. Start sewing the binding strip in the middle of one of the sides of the quilt, placing the strip right side down and leaving an approximated 5" tail. Sew with ¼" seam allowance (using straight stitch), aligning the strip's raw edge with the quilt top's raw edge.
- Stop stitching ¼" before the edge of the quilt (DIAGRAM B 1). Clip the threads. Remove the quilt from under the machine presser foot. Fold the strip in a motion of 45° and upward, pressing with your fingers (DIAGRAM B 2). Hold this fold with your finger, bring the strip down in line with the next edge, making a horizontal fold that aligns with the top edge of the quilt (DIAGRAM B 3). Start sewing at ¼" of the border, stitching all the layers. Do the same in the four corners of the quilt.
- Stop stitching before you reach the last 5 or 6 inches. Cut the threads and remove the quilt from under the machine presser foot. Lay the loose ends of the binding flat along the quilt edge, folding the ends back on themselves where they meet. Press them together to form a crease. Using this crease as the stitching line, sew the two open ends of the binding with right sides together (you can help yourself marking with a pencil if the crease is difficult to see).
- Trim seam to ¼" and press open. Complete the sewing. Turn binding to back of the quilt, turn raw edge inside and stitch by hand using blind stitch.
- If you are using our 2.5 edition (binding fabric), click or scan this QR code to see a tutorial on how to use this specialty fabric.





XXXXXXXXXXXXXXXXXXXXXXXXXXXXXXXXXXXX

*Congratulations  
& enjoy*

XXXXXXXXXXXXXXXXXXXXXXXXXXXXXXXXXXXX



[artgalleryfabrics.com](http://artgalleryfabrics.com)

NOTE: While all possible care has been taken to ensure the accuracy of this pattern, We are not responsible for printing errors or the way in which individual work varies.

Please read instructions carefully before starting the construction of this quilt. If desired, wash and iron your fabrics before starting to cut.

© 2025 Courtesy of Art Gallery Quilts LLC. All Rights Reserved.