

# Continuous

TABLE RUNNER - COSTEIRA EDITION



# Continuous

TABLE RUNNER - COSTEIRA EDITION

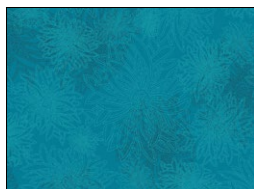
TABLE RUNNER DESIGNED BY AGFstudio

## costeira

FABRICS DESIGNED BY AGF STUDIO



**Fabric A**  
COS77305  
AZULEJOS AZUIS



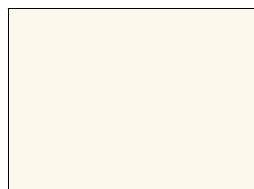
**Fabric B**  
FE-541  
BLUE LAGOON



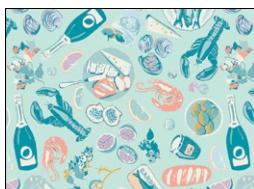
**Fabric C**  
COS87305  
AZULEJOS ROSADOS



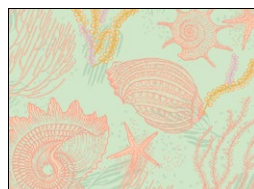
**Fabric D**  
PE573  
LAKEFRONT



**Fabric E**  
PE-408  
WHITE LINEN



**Fabric F**  
COS77302  
GOSTO DA COSTA FRESCA



**BACKING**  
COS77303  
TESOUROS DO OCEANO

# Continuous

TABLE RUNNER - COSTEIRA EDITION

FINISHED SIZE | 16" x 40"

## FABRIC REQUIREMENTS

Fabric <b>A</b>	COS77305	$\frac{1}{6}$ yd.
Fabric <b>B</b>	FE541	$\frac{1}{4}$ yd.
Fabric <b>C</b>	COS87305	$\frac{1}{8}$ yd.
Fabric <b>D</b>	PE5738	$\frac{1}{6}$ yd.
Fabric <b>E</b>	PE-408	$\frac{1}{8}$ yd.
Fabric <b>F</b>	COS77302	$\frac{1}{2}$ yd.

### BACKING FABRIC

COS77303  $1\frac{1}{3}$  yd. (Suggested)

## CUTTING DIRECTIONS

$\frac{1}{4}$ " seam allowances are included.

### Square in a Square

- Eight (8)  $4\frac{1}{2}$ " squares from Fabric **A**
- Thirty Two (32)  $2\frac{1}{2}$ " squares from Fabric **B**

### Flying Geese using the No Waste Method

- Eight (8)  $2\frac{7}{8}$ " squares from Fabric **C**
- Two (2)  $5\frac{1}{4}$ " squares from Fabric **D**
- Two (2)  $1\frac{1}{2}$ " x  $16\frac{1}{2}$ " strips from Fabric **E**
- One (1)  $16\frac{1}{2}$ " x  $26\frac{1}{2}$ " rectangle from Fabric **F**

## CONSTRUCTION

Sew all rights sides together with  $\frac{1}{4}$ " seam allowance.

- Take a  $5\frac{1}{4}$ " x  $5\frac{1}{4}$ " square from Fabric **D** and four (4)  $2\frac{7}{8}$ " x  $2\frac{7}{8}$ " squares from Fabric **C**. These are the pieces you will need to create four flying geese units.
- Draw diagonal lines using a pencil or a water soluble pen on the wrong side of the fabric on each  $2\frac{7}{8}$ " x  $2\frac{7}{8}$ " square from Fabric **C**.

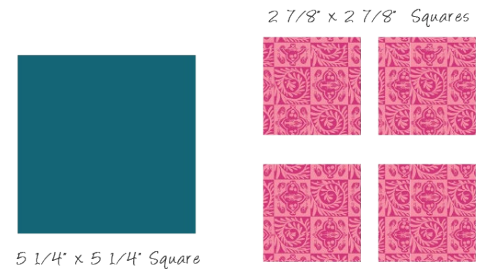


DIAGRAM 1

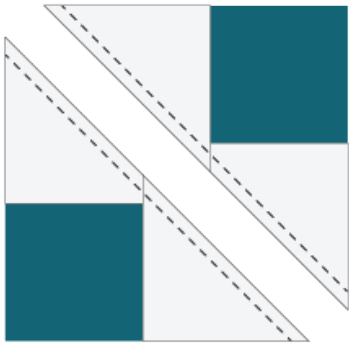
- Place two (2)  $2\frac{7}{8}$ " x  $2\frac{7}{8}$ " squares at each corner of your  $5\frac{1}{4}$ " x  $5\frac{1}{4}$ " square from Fabric **D**. Make sure right sides are together and the diagonal lines match up to make a straight line. (Diagram 2.1)
- Sew  $\frac{1}{4}$ " from the diagonal line on each side of the line. Cut piece on the diagonal line you marked. You will now have two pieces that look like Diagram 2.3.

Draw Diagonal Line



DIAGRAM 2.1

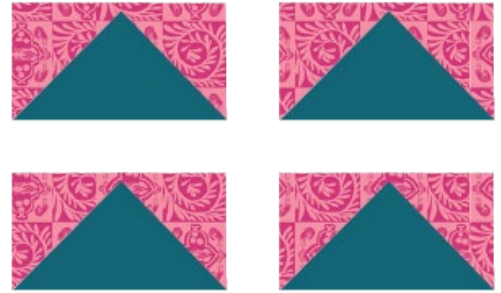
DIAGRAM 2.2



- Press seams toward Fabric **C**. (Diagram 3.1) Now place a 2 7/8" x 2 7/8" rectangle from Fabric **C** at the lower corner of your piece. Follow Diagram 3.2. Sew on each side of the diagonal line you marked at 1/4".
- Cut piece on diagonal line. You will now have two pieces that look like Diagram 3.3.
- Repeat steps in Diagram 3.1-3.3 for the other piece created in Diagram 2.3



- You will now have four flying geese using the no waste method!
- Repeat this flying geese no waste method with the remaining fabric pieces.



- To make your square in a square units, draw a diagonal line from corner to corner on all your 2 1/2" squares from Fabric **B** with a fabric marking pen.
- Place right sides together on the left corner of your 4 1/2" square from Fabric **A** and stitch on the line you drew. Trim your seam allowance to 1/4". Repeat this process with your remain 2 1/2" squares to each corner of your 4 1/2" squares from Fabric **A**.

artgalleryfabrics.com

## ASSEMBLING THE TOP

- You now have all the units to create your quilt top. Piece your quilt top together following Diagram 6.



DIAGRAM 6

- Quilt as desired!
- If you want to add tassel trim pin in place before pinning the backing to the quilt top and tack down tassels.
- Use your quilt top as a template to cut your backing and sew right sides together leaving a small unsewn portions and flip right side out.
- Feel free to add some medium weight fusible to the backing fabric to add a bit more stiffness to your rug!
- To close up unsewn portion tuck under raw edges and top stitch around your entire piece.
- Place on your dinning room table, desk, or hang on a decorative ladder for some extra flare!



[artgalleryfabrics.com](http://artgalleryfabrics.com)

*NOTE: While all possible care has been taken to ensure the accuracy of this pattern, We are not responsible for printing errors or the way in which individual work varies. Please read instructions carefully before starting the construction of this quilt. If desired, wash and iron your fabrics before starting to cut.*

© 2025 Courtesy of Art Gallery Quilts LLC. All Rights Reserved.