



# Tracery

TABLE RUNNER

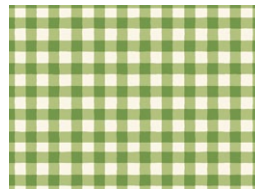
TABLE RUNNER DESIGNED BY *AGFstudio*

*Marigold*

FABRICS DESIGNED BY MAUREEN CRACKNELL



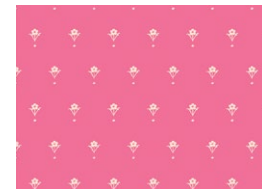
**Fabric A**  
MRG55308  
EPHEMERAL BLOOMS



**Fabric B**  
PLDS910  
SMALL PLAID OF MY  
DREAMS FERN



**Fabric C**  
MRG55306  
BUMBLE BLUSH



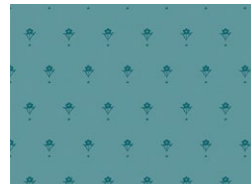
**Fabric D**  
MRG55301  
PAINTED PORCELAIN ROSE



**Fabric E**  
MRG55305  
HUMBLE BEAUTY



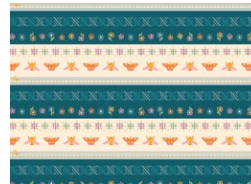
**Fabric F**  
PE-542  
ASPARAGUS



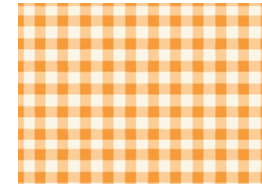
**Fabric G**  
MRG55311  
PAINTED PORCELAIN  
SPRUCE



**Fabric H**  
MRGL55313  
FORAGING FLUTTER SUN



**Fabric I**  
**BINDING**  
BINMRG55  
FLUTTER BOUND



**BACKING**  
PLDS911  
SMALL PLAID OF MY  
DREAMS MARIGOLD



# Tracery

TABLE RUNNER

FINISHED SIZE | 21½" x 63½"

## FABRIC REQUIREMENTS

Fabric <b>A</b>	MRG55308	⅛ yd.
Fabric <b>B</b>	PLDS901	⅛ yd.
Fabric <b>C</b>	MRG55306	⅛ yd.
Fabric <b>D</b>	MRG55301	⅛ yd.
Fabric <b>E</b>	MRG55305	¼ yd.
Fabric <b>F</b>	PE542	¼ yd.
Fabric <b>G</b>	MRG55311	¼ yd.
Fabric <b>H</b>	MRG55313	1½ yd.
Fabric <b>I</b>	BINMRG55	½ yd.

### BACKING FABRIC

PLDS911 1½ yds *(Suggested)*

### BINDING FABRIC

Fabric **I** BINMRG55 *(Included)*

## CUTTING DIRECTIONS

Please ensure that all fabrics are ironed thoroughly before cutting them. ¼" seam allowances are included. WOF means width of the fabric.

### Fabric A

- Cut 1 (one) 2⅝" x WOF strip, then;
  - Subcut 6 (Six) 2⅝" squares.

### Fabric B

- Cut 1 (one) 2⅝" x WOF strip, then;
  - Subcut 12 (Twelve) 2⅝" squares.

### Fabric C

- Cut 1 (one) 2⅝" x WOF strip, then;
  - Subcut 6 (Six) 2⅝" squares.

### Fabric D

- Cut 1 (one) 2⅝" x WOF strip, then;
  - Subcut 12 (Twelve) 2⅝" squares.

### Fabric E

- Cut 2 (two) 2⅝" x WOF strip, then;
  - Subcut 24 (Twenty four) 2⅝" squares.

### Fabric F

- Cut 2 (two) 2⅝" x WOF strip, then;
  - Subcut 60 (Sixty) 2⅝" squares.

### Fabric G

- Cut 3 (three) 2⅝" x WOF strip, then;
  - Subcut 36 (Thirty six) 2⅝" squares.

### Fabric H

- Cut 9 (nine) 2⅝" x WOF strips, then;
  - Subcut 126 (One hundred and twenty six) 2⅝" squares.
- Cut 2 (two) 2¼" x WOF strips, then;
  - Subcut 30 (Thirty) 2¼" squares.
- Cut 2 (two) 9¼" x WOF strips, then;
  - Subcut 6 (Six) 9¼" squares.

### Fabric I

- Cut 5 (five) 2½" x WOF strips. **(BINDING)**

# CONSTRUCTION

*Sew all rights sides together with 1/4" seam allowance.*

## Half Square Triangle (HST) Construction.

- Start by placing 1 (one) 2<sup>5</sup>/<sub>8</sub>" square from fabrics **A** and **H** right sides facing each other and mark a diagonal line on the wrong side of the top fabric square.

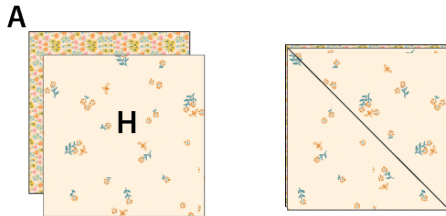


DIAGRAM 1

- Sew a **SCANT** 1/4" seam on each side of the diagonal line.
- Press the sewn square to set the seams and with a rotary cutter cut through the drawn line.
- Open each half square triangle (HST) outward and lightly press. Be careful to only press up and down, NOT back and forth so as not to stretch them. Your seams should be
- pressed (both layers) towards the darker color. Trim each hst (half square triangle) unit to a 2<sup>1</sup>/<sub>4</sub>" square. Make a total of 12 (twelve) **A-H** hst (half square triangle) Units.

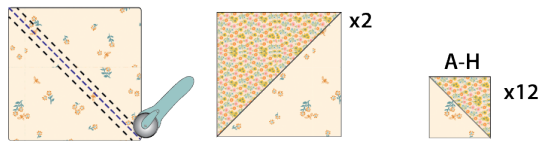


DIAGRAM 2

- Using the hst (half square triangle) technique, make the following combinations.

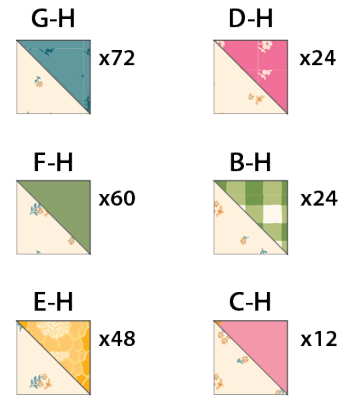


DIAGRAM 3

- Cut 30 (thirty) 2<sup>1</sup>/<sub>4</sub>" square from fabric **H** diagonally, you should have a total of 60 (Sixty) 2<sup>1</sup>/<sub>4</sub>" hst units.

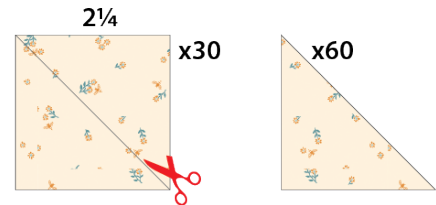


DIAGRAM 4

- Cut 6 (six) 9<sup>1</sup>/<sub>4</sub>" squares from fabric **H** diagonally, you should have a total of 12 (Twelve) 9<sup>1</sup>/<sub>4</sub>" hst units.

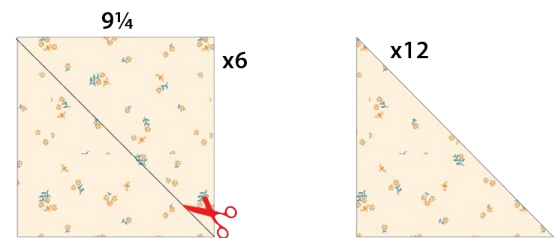


DIAGRAM 5

- Arrange 26 (twenty six)  $2\frac{1}{4}$ " hst units into 6 (six) rows and sew them by rows.
- For fabric placement and attachment. See diagram below.

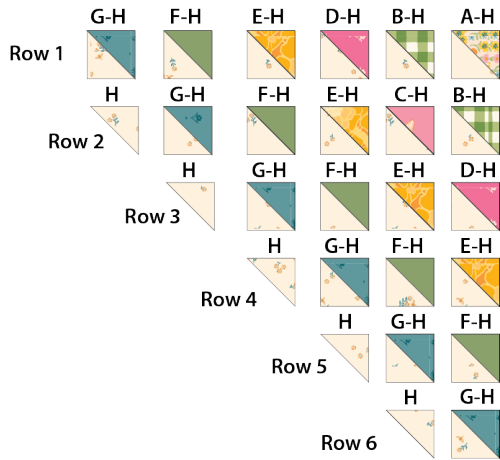


DIAGRAM 6

- Now, join all 6 (six) rows and make a total of 12 (twelve) section 1.

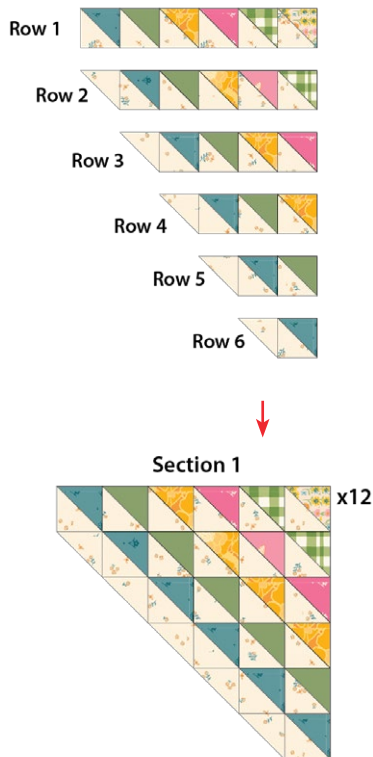


DIAGRAM 7

- Join 1 (one) section 1 and 1 (one)  $9\frac{1}{4}$ " HST unit from fabric H.

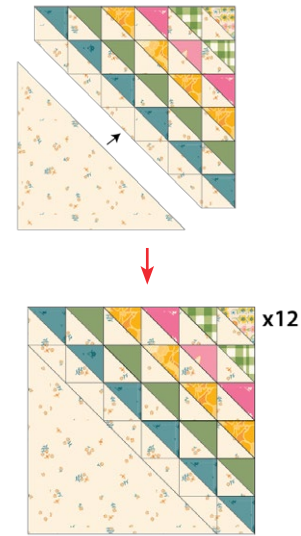


DIAGRAM 8

- Arrange all block 1 into 2 (two) columns of 6 (six) blocks each, then; sew columns.

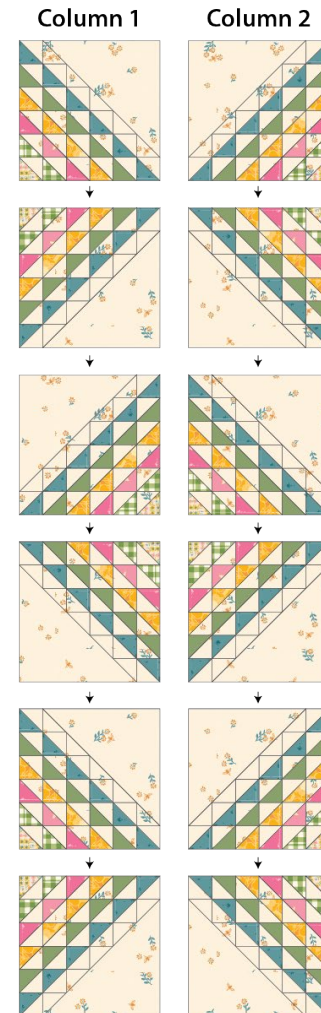


DIAGRAM 9



- Pin all layers together and baste with basting thread, using long stitches. You can also use safety pins to join the layers.
- Machine or hand quilt starting at the center and working towards the corners. Remember that quilting motifs are a matter of personal preference. Have fun choosing yours!
- After you finished, trim excess of any fabric or batting, squaring the quilt to proceed to bind it.

## BINDING

*Sew rights sides together.*

- Cut enough strips  $2\frac{1}{2}$ " wide by the width of the fabric **I** to make a final strip 180" long. Start sewing the binding strip in the middle of one of the sides of the quilt, placing the strip right side down and leaving an approximated 5" tail. Sew with  $\frac{1}{4}$ " seam allowance (using straight stitch), aligning the strip's raw edge with the quilt top's raw edge.
- Stop stitching  $\frac{1}{4}$ " before the edge of the quilt (DIAGRAM B 1). Clip the threads. Remove the quilt from under the machine presser foot. Fold the strip in a motion of  $45^\circ$  and upward, pressing with your fingers (DIAGRAM B2). Hold this fold with your finger, bring the strip down in line with the next edge, making a horizontal fold that aligns with the top edge of the quilt (DIAGRAM B3). Start sewing at  $\frac{1}{4}$ " of the border, stitching all the layers. Do the same in the four corners of the quilt.
- Stop stitching before you reach the last 5 or 6 inches. Cut the threads and remove the quilt from under the machine presser foot. Lay the loose ends of the binding flat along the quilt edge, folding the ends back on themselves where they meet. Press them together to form a crease. Using this crease as the stitching line, sew the two open ends of the binding with right sides together (you can help yourself marking with a pencil if the crease is difficult to see).
- Trim seam to  $\frac{1}{4}$ " and press open. Complete the sewing. Turn binding to back of the quilt, turn raw edge inside and stitch by hand using blind stitch.

- If you are using our 2.5 edition (binding fabric), click or scan this QR code to see a tutorial on how to use this specialty fabric.

