

X  
X  
X  
X  
X  
X  
X  
X  
X  
X  
X  
X

## ANTHOLOGY EDITION



XXXXXXXXXXXXXXXXXXXX





# Coming HOME

ANTHOLOGY EDITION

QUILT DESIGNED BY AGFstudio

## Anthology

FABRICS DESIGNED BY BARI J.



**FABRIC A**

ANT52104

BELOVED MEMOIR FERN



**FABRIC B**

ANT52100A

GARDEN STUDY FRESH



**FABRIC C**

DSE719

PINK POWDER



**FABRIC D**

FE536

FUCSIA



**FABRIC E**

PE515

OLIVE OIL



**FABRIC F**

ANT42100

GARDEN STUDY BLUSH



**FABRIC G**

ANT52101

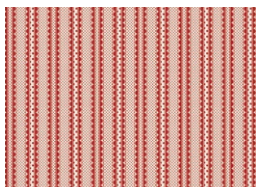
RIBBONED BLOSSOMS TART



**FABRIC H**

PE516

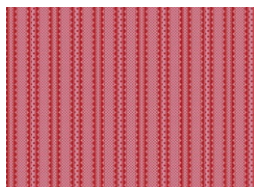
GARDEN FERN



**FABRIC I**

LEG32106

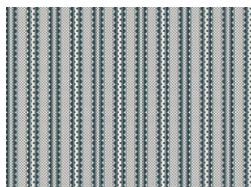
LEGACY STRIPE CHERRY



**FABRIC J**

LEG32107

LEGACY STRIPE ROUGE



**FABRIC K**

LEG32103

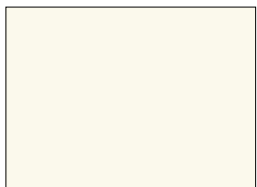
LEGACY STRIPE TEAL



**FABRIC L**

ANT42102

HEATHLAND ALLUSION VERT



**FABRIC M**

PE408

WHITE LINEN



**FABRIC N**

ANT42104

BELOVED MEMOIR PLUM



**FABRIC O**

LEG32100

LEGACY STRIPE HONEY



**FABRIC P**

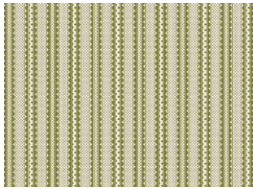
ANT42101

RIBBONED BLOSSOMS SWEET

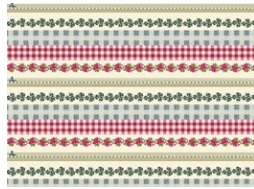


ART GALLERY FABRICS®

© 2025 Courtesy of Art Gallery Quilts LLC. All Rights Reserved.



**Fabric Q**  
LEG32101  
LEGACY STRIPE MOSS



**Fabric R (Binding)**  
BINANT42  
MEMOIR BOUND



**Backing**  
ANT42103  
FLORAL METAPHOR CERISE

# Coming HOME

ANTHOLOGY EDITION

FINISHED SIZE | 74½" x 74½"

## FABRIC REQUIREMENTS

Fabric <b>A</b>	ANT52104	½ yd.
Fabric <b>B</b>	ANTL52100a	¾ yd.
Fabric <b>C</b>	DSE719	¾ yd.
Fabric <b>D</b>	FE536	FQ.
Fabric <b>E</b>	PE515	FQ.
Fabric <b>F</b>	ANTL42100	½ yd.
Fabric <b>G</b>	ANT52101	⅝ yd.
Fabric <b>H</b>	PE516	FQ.
Fabric <b>I</b>	LEG32106	⅝ yd.
Fabric <b>J</b>	LEG32107	⅝ yd.
Fabric <b>K</b>	LEG32103	1½ yd.
Fabric <b>L</b>	ANT42102	⅞ yd.
Fabric <b>M</b>	PE408	⅞ yd.
Fabric <b>N</b>	ANT42104	½ yd.
Fabric <b>O</b>	LEG32100	⅝ yd.
Fabric <b>P</b>	ANT42101	⅝ yd.
Fabric <b>Q</b>	LEG32101	⅝ yd.
Fabric <b>R</b>	BINANT42	¾ yd.

### BACKING FABRIC

ANT42103 5 yds (Suggested)

### BINDING FABRIC

Fabric **R** BINANT42 ¾ yd. (Included)

## CUTTING DIRECTIONS

Please ensure that all fabrics are ironed thoroughly before cutting them. ¼" seam allowances are included. WOF means width of the fabric.

### Fabric A

- Cut 1 (one) 9¾" x WOF strip, then;
  - Sub-cut into 3 (three) 9¾" squares.
- Cut 1 (one) 4½" x WOF strip then;
  - Sub-cut into 8 (eight) 4½" squares.

### Fabric B

- Cut 1 (one) 4½" x WOF strip then;
  - Sub-cut into 8 (eight) 4½" squares.
- Cut 2 (two) 9¾" x WOF strips, then;
  - Sub-cut into 6 (six) 9¾" squares.
- Cut 1 (one) 2" x WOF strip, then;
  - Sub-cut into 4 (four) 2" squares.

### Fabric C

- Cut 2 (two) 9¾" x WOF strips, then;
  - Sub-cut into 6 (six) 9¾" squares.
  - Sub-cut into 8 (eight) 4¼" squares.
- Cut 1 (one) 4½" x WOF strip, then;
  - Sub-cut into 8 (eight) 4½" squares.

### Fabric D

- Cut 2 (two) 9¾" squares.

### Fabric E

- Cut 2 (two) 9¾" squares.

### Fabric F

- Cut 1 (one) 4½" x WOF strip, then;
  - Sub-cut into 8 (eight) 4½" squares.
- Cut 1 (one) 9¾" x WOF strip, then;
  - Sub-cut into 2 (two) 9¾" squares.
- Cut 1 (one) 2" x WOF strip, then;
  - Sub-cut into 8 (eight) 2" squares.



### Fabric G

- Cut 3 (three)  $9\frac{3}{4}$ " squares.

### Fabric H

- Cut 1 (one)  $9\frac{3}{4}$ " square.

### Fabric I

- Cut 4 (four)  $2\frac{1}{2}$ " x  $26\frac{1}{2}$ " strips.

### Fabric J

- Cut 1 (one)  $9\frac{3}{4}$ " x WOF strip, then  
-Sub-cut into 2 (two)  $9\frac{3}{4}$ " squares.
- Cut 1 (one)  $2\frac{1}{2}$ " x WOF strip, then;  
-Sub-cut into 4 (four)  $2\frac{1}{2}$ " squares.

### Fabric K

- Cut 1 (one)  $9\frac{3}{4}$ " x WOF strip, then;  
-Sub-cut into 4 (four)  $9\frac{3}{4}$ " squares.
- Cut 3 (three)  $4\frac{1}{2}$ " x WOF strips, then;  
-Sub-cut into 24 (twenty four)  $4\frac{1}{2}$ " squares.
- Cut 1 (one)  $2\frac{1}{2}$ " x WOF strip, then;  
-Sub-cut into 8 (eight)  $2\frac{1}{2}$ " x  $26\frac{1}{2}$ " strips.

### Fabric L

- Cut 9 (nine)  $9\frac{3}{4}$ " squares.

### Fabric M

- Cut 2 (two)  $9\frac{3}{4}$ " x WOF strips, then;  
-Sub-cut into 6 (six)  $9\frac{3}{4}$ " squares.  
-Sub-cut into 8 (eight)  $4\frac{1}{2}$ " squares.
- Cut 4 (four)  $2\frac{1}{2}$ " x  $26\frac{1}{2}$ " strips.

### Fabric N

- Cut 1 (one)  $9\frac{3}{4}$ " x WOF strip, then;  
-Sub-cut into 4 (four)  $9\frac{3}{4}$ " squares.
- Cut 1 (one)  $4\frac{1}{2}$ " x WOF strip, then;  
-Sub-cut into 8 (eight)  $4\frac{1}{2}$ " squares.

### Fabric O

- Cut 3 (three)  $9\frac{3}{4}$ " squares.

### Fabric P

- Cut 1 (one)  $9\frac{3}{4}$ " x WOF strips, then;  
-Sub-cut into 4 (four)  $9\frac{3}{4}$ " squares.
- Cut 1 (one) 2" x WOF strip, then;  
-Sub-cut into 4 (four) 2" squares.

### Fabric Q

- Cut 1 (one)  $9\frac{3}{4}$ " x WOF strip, then;  
-Sub-cut into 3 (three)  $9\frac{3}{4}$ " squares.
- Cut 2 (two)  $4\frac{1}{2}$ " x WOF strips, then;  
-Sub-cut into 16 (sixteen)  $4\frac{1}{2}$ " squares.

### Fabric R

- Cut 8 (eight)  $2\frac{1}{2}$ " x WOF strips. (Binding)

## CONSTRUCTION

*Sew all rights sides together with  $\frac{1}{4}$ " seam allowance.*

### Half Square Triangle (HST) Construction.

Magic 8 method:

- Start by placing one (1)  $9\frac{3}{4}$ " square from fabric **A** and **C** right sides facing together.

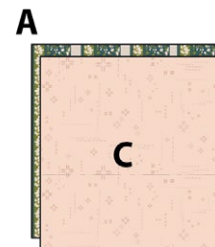


DIAGRAM 1

- Mark a diagonal line across both diagonals on the wrong side of the top fabric square (Fig. 1)

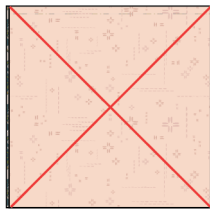


Fig. 1

DIAGRAM 2

- Sew a SCANT 1/4" seam on each side of each diagonal line and press the sewn square to set the seams (Fig. 2)

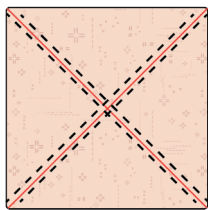


Fig. 2

DIAGRAM 3

- To separate the square into 8 (eight) units you will be making 4 (four) cuts: a vertical, a horizontal, and 2 (two) diagonal. As you make the cuts, don't rotate the fabric or your pieces may shift position. Instead, rotate the mat or walk around it.

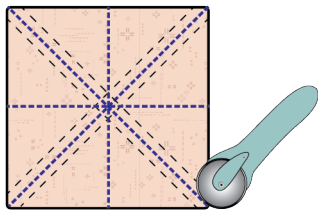


Fig. 3

DIAGRAM 4

- Open the blocks outward and lightly press. Be very careful to only press up and down, NOT back and forth so as not to stretch them. Your seam should be pressed (both layers) toward the darker color.
- Trim each half square triangle (HST) to a 4½" square.

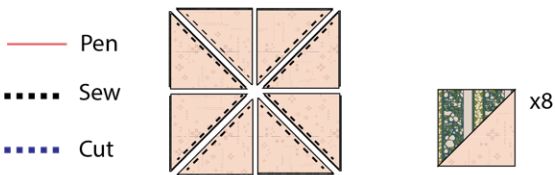


DIAGRAM 5

- Follow the same method to make the following combinations:

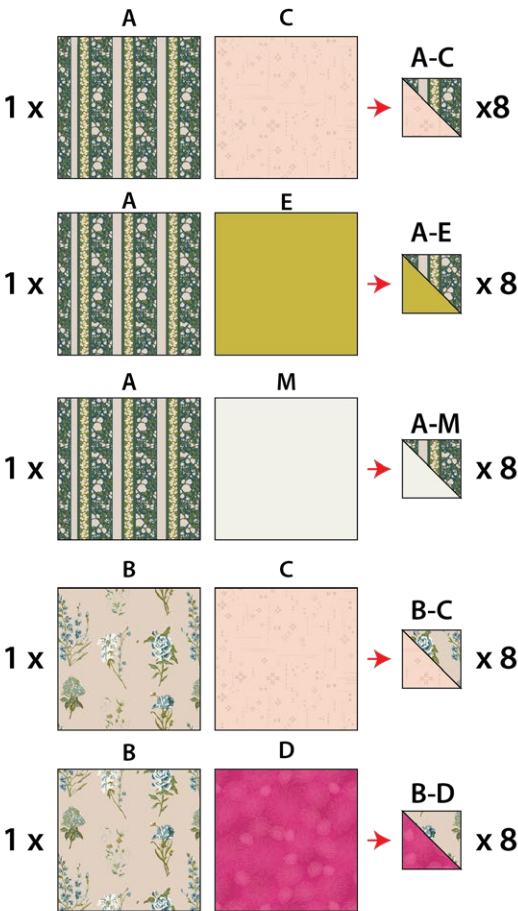


DIAGRAM 6

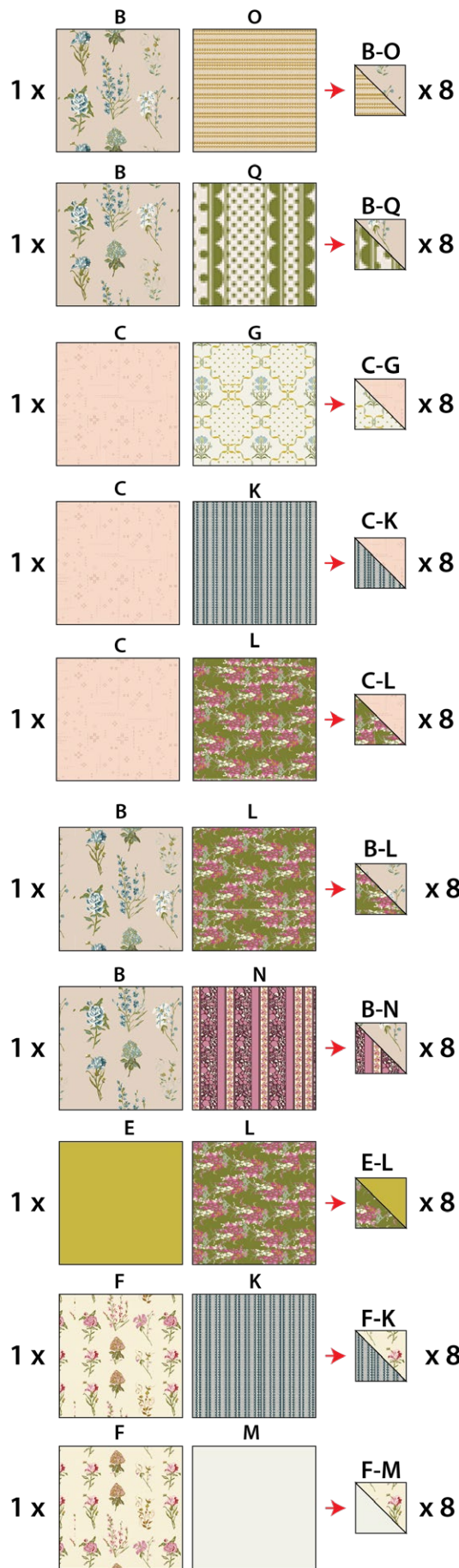


DIAGRAM 7

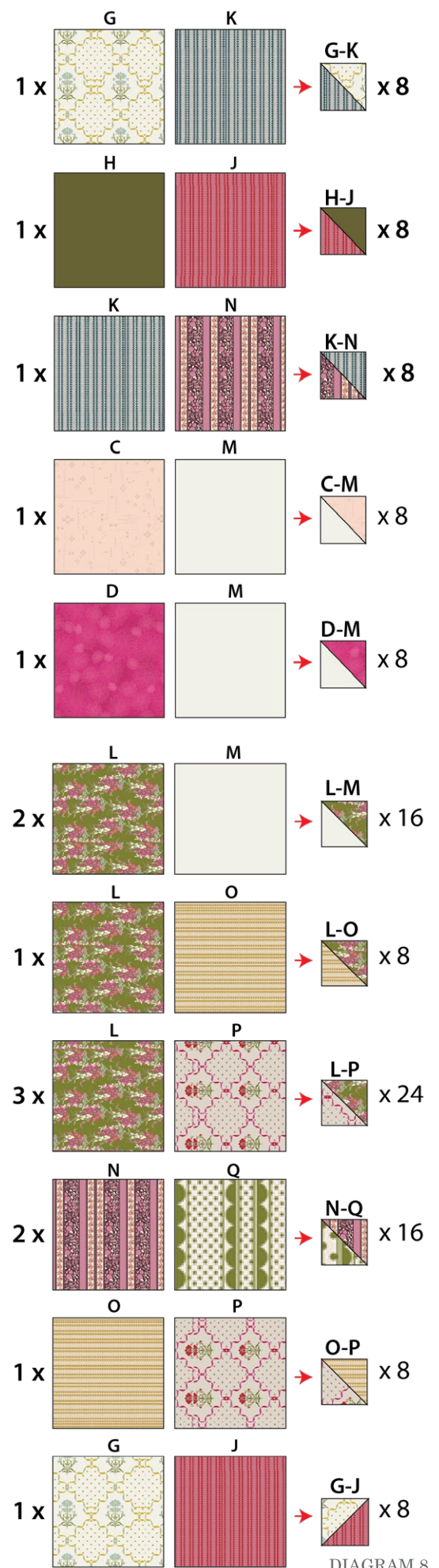


DIAGRAM 8



### Block 1:

- We will assemble rows from 1 thru 6 with the following combinations:
- **Row 1:** 1 (one)  $4\frac{1}{2}$ " square from fabric **N**.
- **Row 2:** 1 (one)  $4\frac{1}{2}$ " square from fabric **B** and 1 (one) (**H-J**) HST unit.
- **Row 3:** 1 (one)  $4\frac{1}{2}$ " square from fabric **C**, 1 (one) (**C-G**), (**B-N**) HST units.
- **Row 4:** 1 (one)  $4\frac{1}{2}$ " square from fabric **C**, 1 (one) (**A-C**), (**B-O**) and (**A-E**) HST units.
- **Row 5:** 1 (one)  $4\frac{1}{2}$ " square from fabric **K**, 1 (one) (**B-C**), (**G-K**), (**K-N**) and (**F-M**) HST units.
- **Row 6:** 1 (one)  $4\frac{1}{2}$ " square from fabric **A**, 1 (one) (**G-J**), (**L-P**), (**B-L**), (**B-D**) and (**F-K**) HST units.

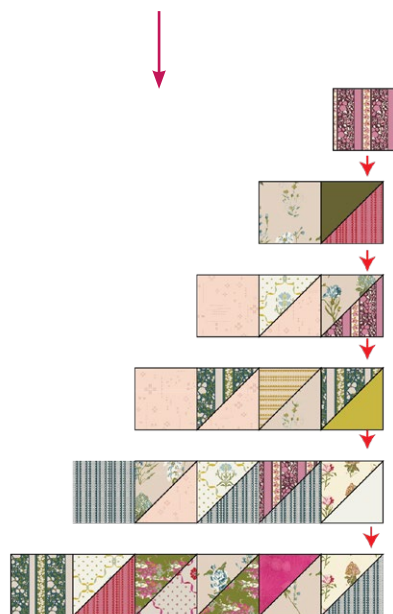
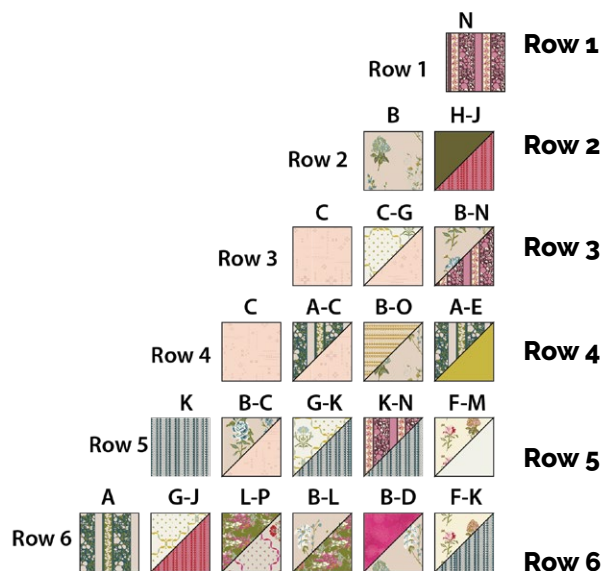


DIAGRAM 9

- Press block 1 and trim the squares as shown on the diagram below. Make a total of four (4) block 1



## Block 1

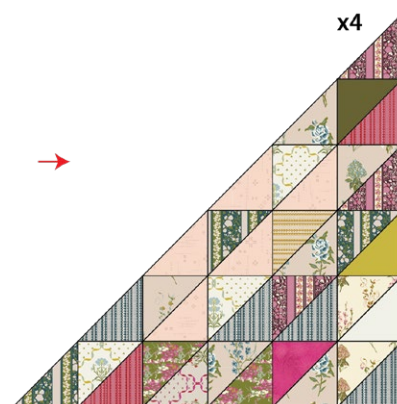


DIAGRAM 10

## Block 2:

- We will assemble rows from 1 thru 6 with the following combinations:
- **Row 1:** 1 (one)  $4\frac{1}{2}$ " square from fabric **N**.
- **Row 2:** 1 (one) (**H-J**) HST unit and 1 (one)  $4\frac{1}{2}$ " square from fabric **B**.
- **Row 3:** 1 (one) (**B-N**), (**C-G**) HST units and 1 (one)  $4\frac{1}{2}$ " square from fabric **C**.
- **Row 4:** 1 (one) (**A-E**) (**B-O**) and (**A-C**) HST units and 1 (one)  $4\frac{1}{2}$ " square from fabric **C**
- **Row 5:** 1 (one) (**F-M**), (**K-N**), (**G-K**) and (**B-C**) HST units and 1 (one)  $4\frac{1}{2}$ " square from fabric **K**.
- **Row 6:** 1 (one) (**F-K**), (**B-D**), (**B-L**), (**L-P**) and (**G-J**) HST units and 1 (one)  $4\frac{1}{2}$ " square from fabric **A**.



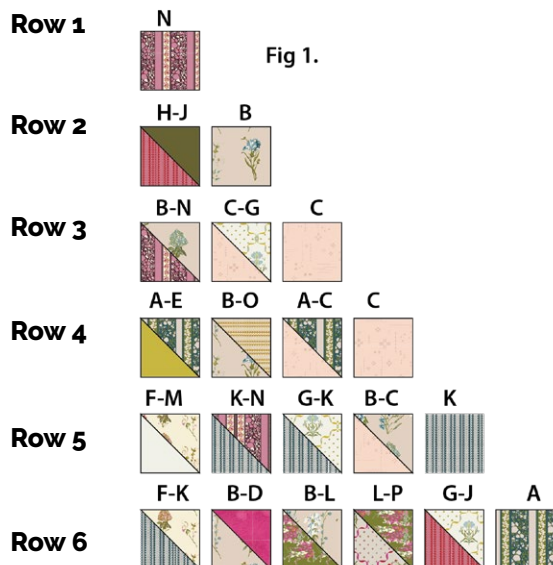


Fig 1.

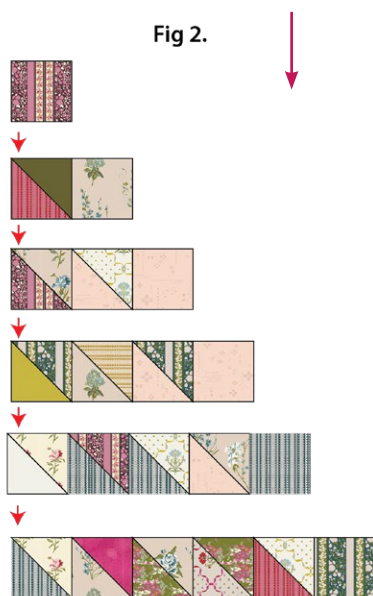
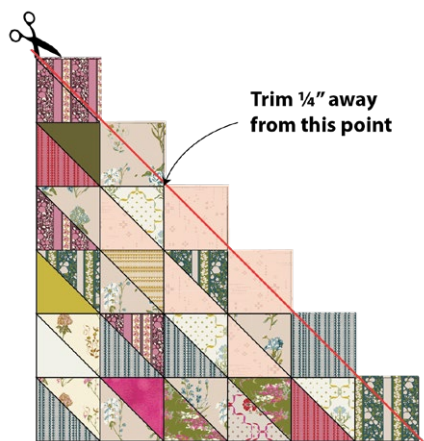


Fig 2.

DIAGRAM 11

- Press block 2 and trim the squares as shown on the diagram below. Make a total of 4 (four) block 2.



Block 2

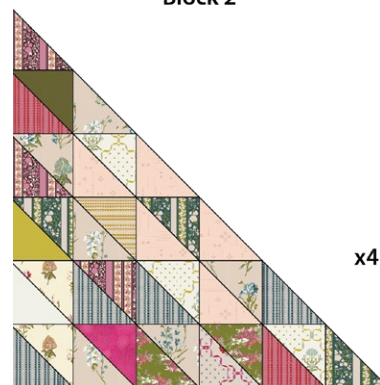


DIAGRAM 11

### Block 3:

- We will assemble rows from 1 thru 6 with the following combinations, make sure to follow the diagram for fabric placement:
- **Row 6:** 1 (one)  $4\frac{1}{2}$ " square from fabric **F**, 1 (one) (**L-P**) (**C-M**), (**L-P**), (**C-K**) and (**A-M**) HST units.
- **Row 5:** 1 (one)  $4\frac{1}{2}$ " square from fabric **K**, 1 (one) (**E-L**), (**L-M**), (**C-L**) and (**N-Q**) HST units.
- **Row 4:** 1 (one)  $4\frac{1}{2}$ " square from fabric **K**, 1 (one) (**O-P**), (**L-M**) and (**B-Q**) HST units.
- **Row 3:** 1 (one)  $4\frac{1}{2}$ " square from fabric **M**, 1 (one) (**L-O**) and (**N-Q**) HST units.
- **Row 2:** 1 (one)  $4\frac{1}{2}$ " square from fabric **Q** and 1 (one) (**D-M**) HST unit.
- **Row 1:** 1 (one)  $4\frac{1}{2}$ " square from fabric **Q**.

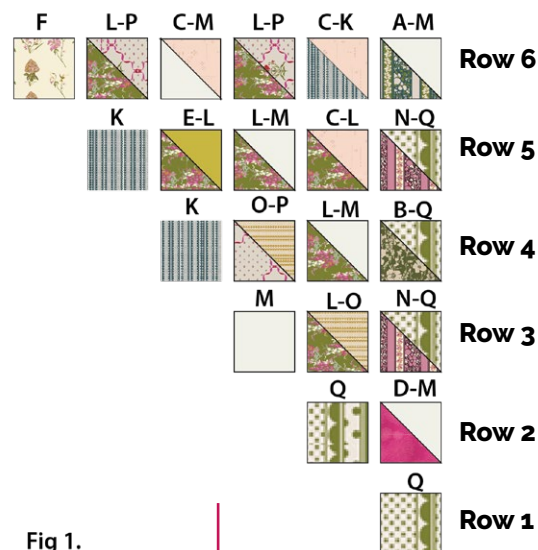


Fig 1.

DIAGRAM 12

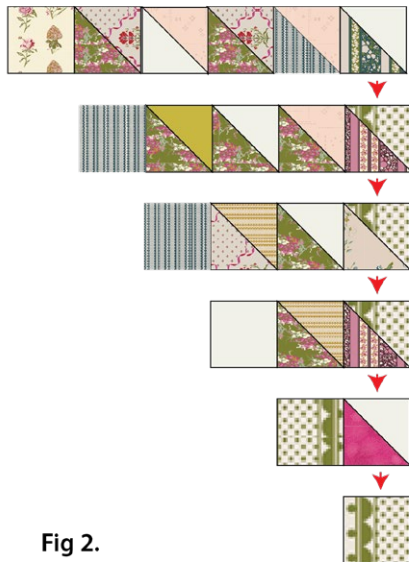
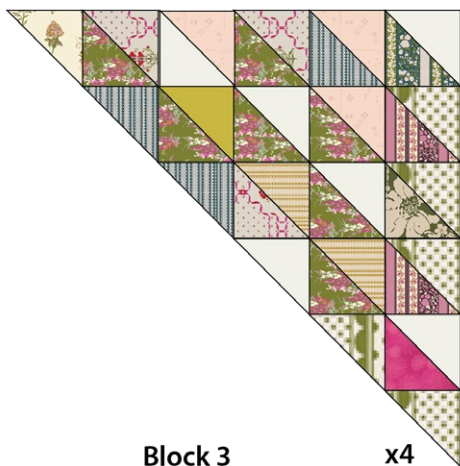
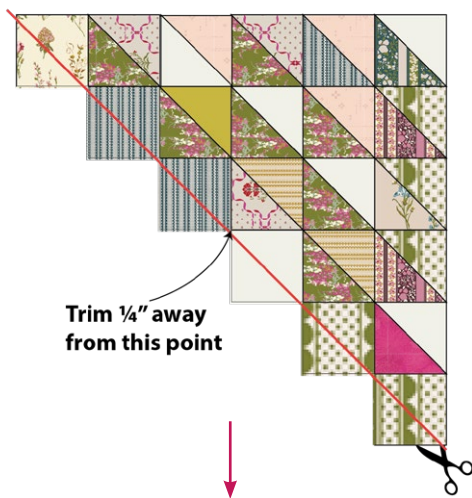


Fig 2.

DIAGRAM 13

- Press block 3 and trim the squares as shown on the diagram below. Make a total of 4 (four) block 3.



Block 3

x4

DIAGRAM 14

#### • Block 4:

- We will assemble rows from 1 thru 6 with the following combinations, make sure to follow the diagram for fabric placement:
- **Row 6:** Join 1 (one) (A-M) (C-K), (L-P), (C-M) HST units and 1 (one) 4½" square from fabric F.
- **Row 5:** Join 1 (one) (N-Q), (C-L), (L-M), (E-L) HST units 1 (one) 4½" square from fabric K.
- **Row 4:** Join 1 (one) (B-Q), (L-M), (O-P) HST units 1 (one) 4½" square from fabric K.
- **Row 3:** Join 1 (one) 1 (one) (N-Q) and (L-O) HST units and 1 (one) 4½" square from fabric M.
- **Row 2:** Join 1 (one) (D-M) HST unit and 1 (one) 4½" square from fabric Q.
- **Row 1:** Join 1 (one) 4½" square from fabric Q.

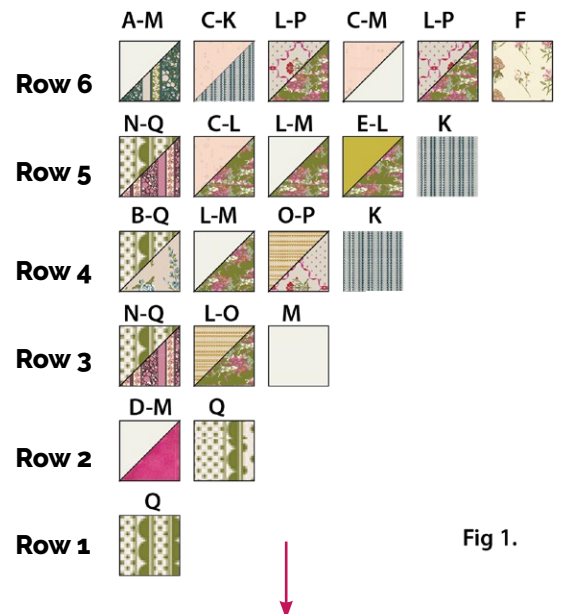


Fig 1.

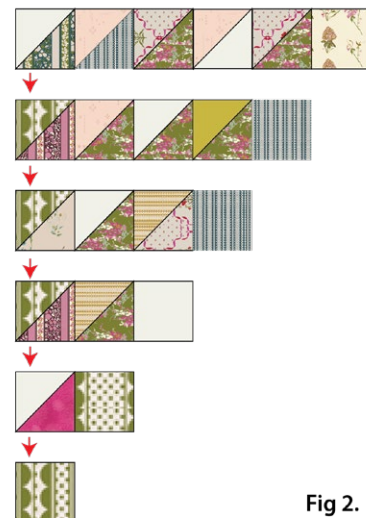


Fig 2.

DIAGRAM 15



- Press block 4 and trim the squares as shown on the diagram below. Make a total of 4 (four) block 4.

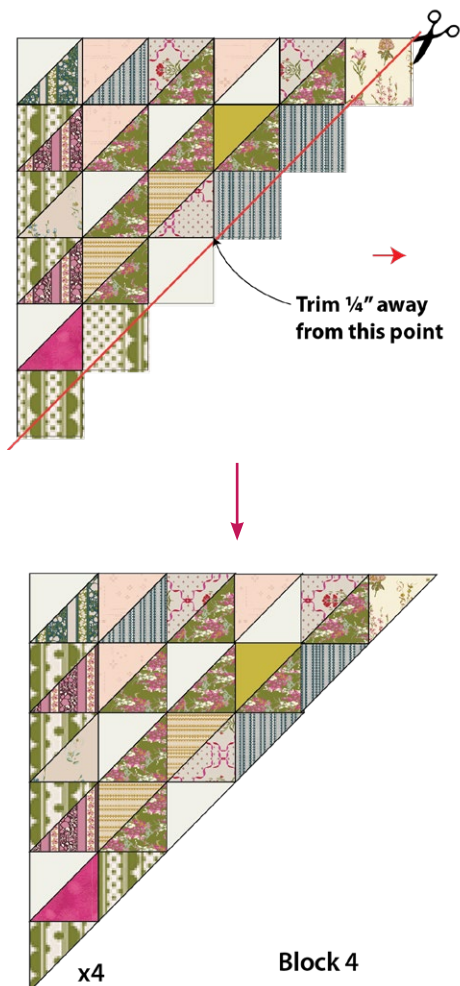


DIAGRAM 16

### Block 5:

- Take 4 (four)  $2\frac{1}{2}$ " squares from fabric **J**, four (4)  $26\frac{1}{2}$ " x  $2\frac{1}{2}$ " strips from fabrics **I** and **M**, 8 (eight)  $26\frac{1}{2}$ " x  $2\frac{1}{2}$ " strips from fabric **K** and all the Blocks.
- Join them as follows:
- Row 1: Block 1 - **I** - Block 2
- Row 1: **K** - **J** - **K**
- Row 1: Block 3 - **M** - Block 4
- Make sure the square from fabric **J** is aligned with the strips from fabrics **I** and **M**.
- Make four (4) of these.

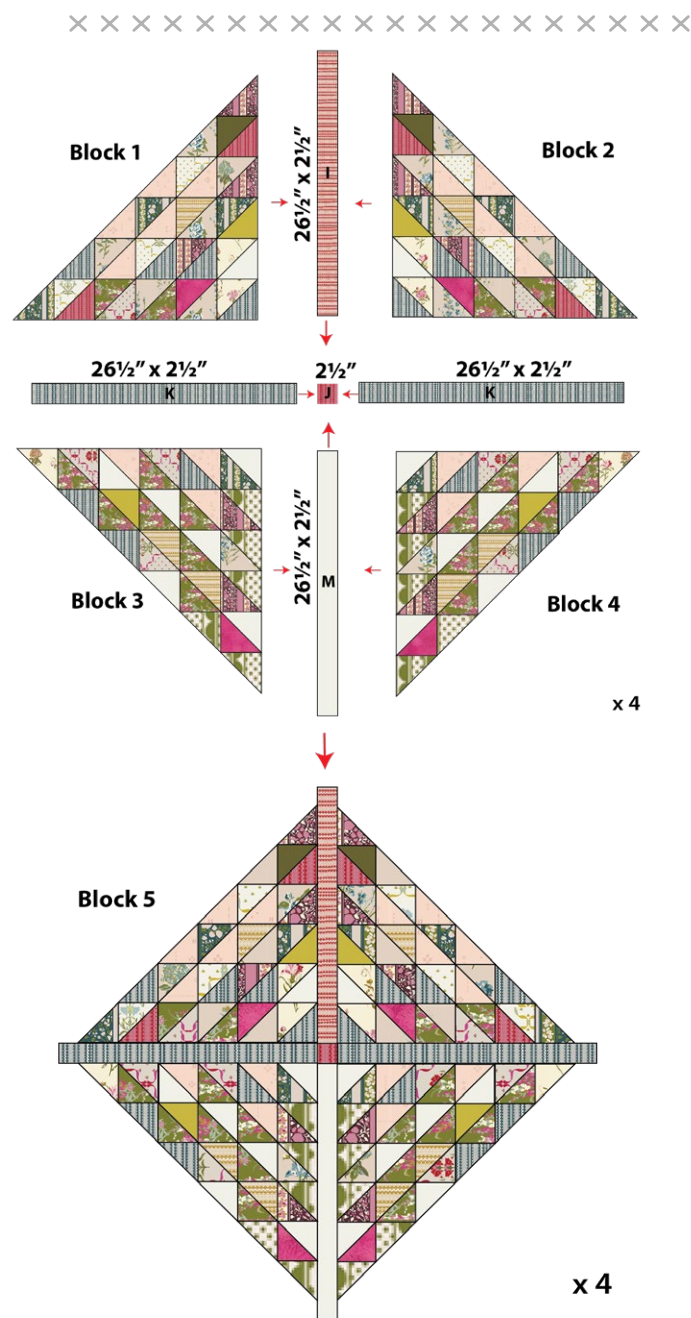


DIAGRAM 17

- Follow the lines of the blocks to trim the tips of the strips from fabrics **I**, **K**, and **M**.

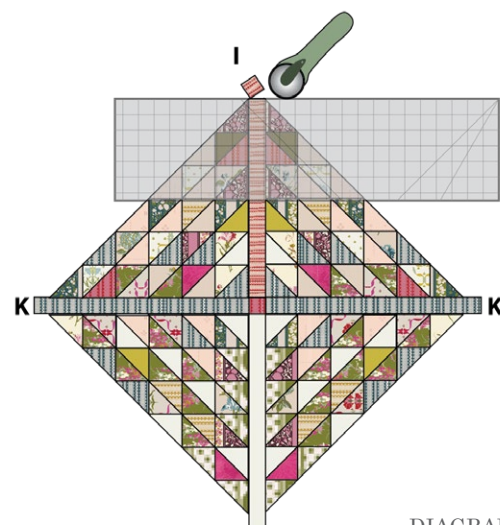


DIAGRAM 18



- Take 4 (four) 2" squares from fabrics **B** and **P**, and 8 (eight) 2" squares from fabric **F**.

### Corner Square triangle technique:

- Start by placing one (1) 2" squares from fabric **B** on the top left corner of 1 (one) Block 5.
- Sew diagonally, trim  $\frac{1}{4}$ " away from seam allowance and press open.
- Place another 2" squares from fabric **F** to the top right corner of the same Block 5, sew diagonally, trim  $\frac{1}{4}$ " away from seam allowance and press open.
- Keep repeating the same steps with the other 1 (one) 2" squares from fabric **F** on the bottom left corner of the same Block 5 and 1 (one) 2" square from fabric **P** on the bottom right corner of Block 5.

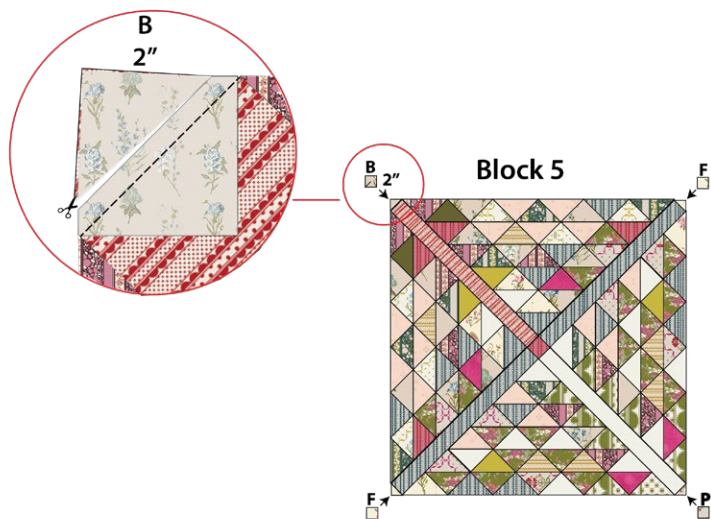


DIAGRAM 19

- Join all 4 (four) Block 5, following the diagram:

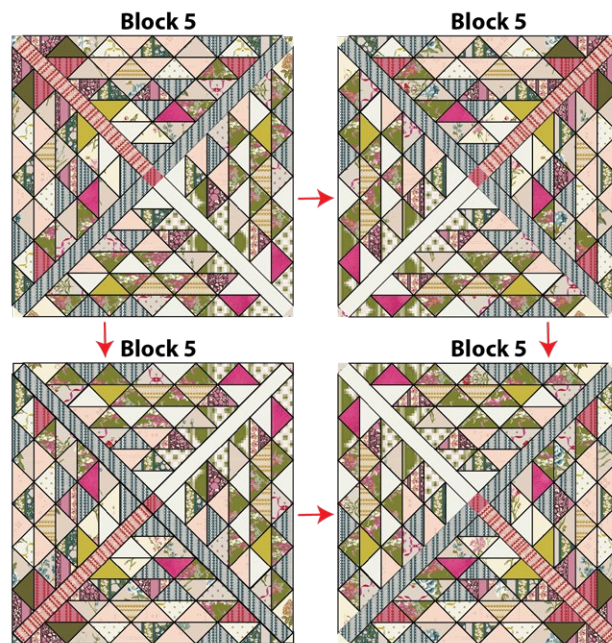


DIAGRAM 20

### QUILT TOP

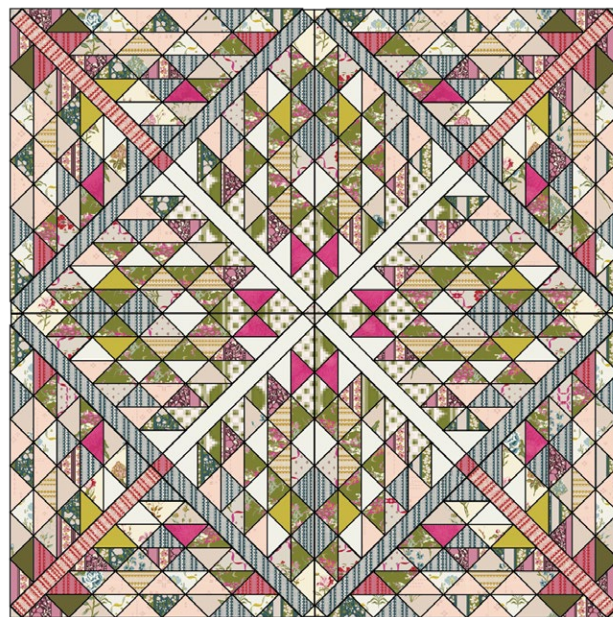


DIAGRAM 21



## QUILT ASSEMBLY

*Sew rights sides together.*

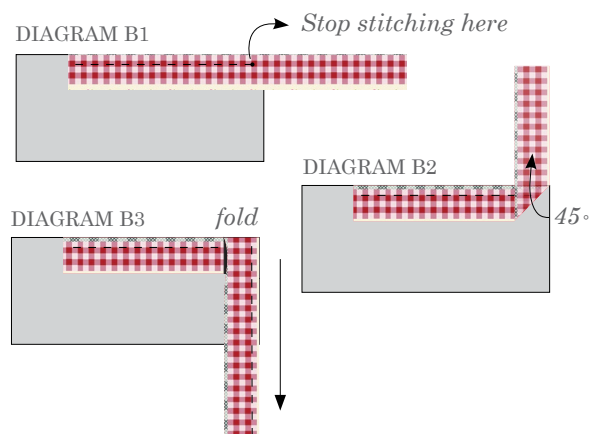
- Place BACKING FABRIC on a large surface wrong side up. Stretch it with masking tape against that surface.
- Place BATTING on top of backing fabric.
- Place TOP on top of the batting with right side facing up. Smooth away wrinkles using your hands.
- Pin all layers together and baste with basting thread, using long stitches. You can also use safety pins to join the layers.
- Machine or hand quilt starting at the center and working towards the corners. Remember that quilting motifs are a matter of personal preference. Have fun choosing yours!
- After you finished, trim excess of any fabric or batting, squaring the quilt to proceed to bind it.

## BINDING

*Sew rights sides together.*

- Sew 8 (eight) 2½" wide by the width of the fabric **R** to make a final strip 308" long. Start sewing the binding strip in the middle of one of the sides of the quilt, placing the strip right side down and leaving an approximated 5" tail. Sew with ¼" seam allowance (using straight stitch), aligning the strip's raw edge with the quilt top's raw edge.
- Stop stitching ¼" before the edge of the quilt (DIAGRAM B 1). Clip the threads. Remove the quilt from under the machine presser foot. Fold the strip in a motion of 45° and upward, pressing with your fingers (DIAGRAM B2). Hold this fold with your finger, bring the strip down in line with the next edge, making a horizontal fold that aligns with the top edge of the quilt (DIAGRAM B3). Start sewing at ¼" of the border, stitching all the layers. Do the same in the four corners of the quilt.

- Stop stitching before you reach the last 5 or 6 inches. Cut the threads and remove the quilt from under the machine presser foot. Lay the loose ends of the binding flat along the quilt edge, folding the ends back on themselves where they meet. Press them together to form a crease. Using this crease as the stitching line, sew the two open ends of the binding with right sides together (you can help yourself marking with a pencil if the crease is difficult to see).
- Trim seam to ¼" and press open. Complete the sewing. Turn binding to back of the quilt, turn raw edge inside and stitch by hand using blind stitch.
- If you are using our 2.5 edition (binding fabric), click or scan this QR code to see a tutorial on how to use this specialty fabric.



XXXXXXXXXXXXXXXXXXXXXXXXXXXXXXXXXXXX

*Congratulations  
& enjoy*

XXXXXXXXXXXXXXXXXXXXXXXXXXXXXXXXXXXX



[artgalleryfabrics.com](http://artgalleryfabrics.com)

NOTE: While all possible care has been taken to ensure the accuracy of this pattern, We are not responsible for printing errors or the way in which individual work varies.

Please read instructions carefully before starting the construction of this quilt. If desired, wash and iron your fabrics before starting to cut.

© 2025 Courtesy of Art Gallery Quilts LLC. All Rights Reserved.