



Boheme Stripes

PILLOW

ANTHOLOGY EDITION



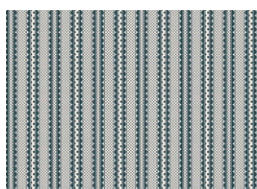
Boheme Stripes

ANTHOLOGY EDITION

PILLOW DESIGNED BY AGFstudio

Anthology

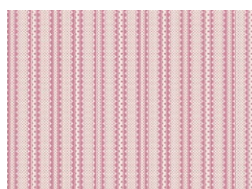
FABRICS DESIGNED BY BARI J.



Fabric A
LEG32103
LEGACY STRIPE TEAL



Fabric B
LEG32100
LEGACY STRIPE HONEY



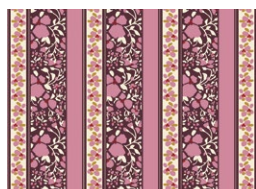
Fabric C
LEG32105
LEGACY STRIPE ROSE



Fabric D
ANT42102
HEATHLAND ALLUSION VERT



Fabric E
ANT62105
TILTED HORIZON ROSE



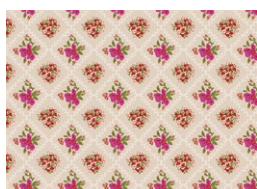
Fabric F
ANT42104
BELOVED MEMOIR PLUM



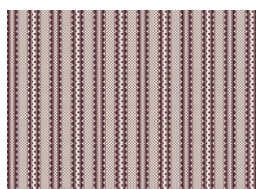
Fabric G
ANT42101
RIBBONED BLOSSOMS
SWEET



Fabric H
ANT52103
FLORAL METAPHOR LEMON



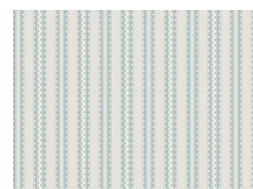
Fabric I
ANT42103
FLORAL METAPHOR CERISE



Fabric J
LEG32104
LEGACY STRIPE FIG



Fabric K
ANT52104
BELOVED MEMOIR FERN



Fabric L
LEG32102
LEGACY STRIPE MIST



Fabric M
PE466
HUNTER FIELDS



Boheme Stripes

ANTHOLOGY EDITION

FINISHED SIZE | 14" x 20"

FABRIC REQUIREMENTS

Fabric A	LEG3213	F8.
Fabric B	LEG32100	F8.
Fabric C	LEG32105	F8.
Fabric D	ANT42102	F8.
Fabric E	ANT62105	F8.
Fabric F	ANT42104	$\frac{3}{8}$ yd.
Fabric G	ANT42101	F8.
Fabric H	ANT52103	F8.
Fabric I	ANT42103	F8.
Fabric J	LEG32104	F8.
Fabric K	ANT52104	F8.
Fabric L	LEG3212	F8.
Fabric M	PE466	$\frac{1}{4}$ yd.

BACKING FABRIC

Fabric **F** $\frac{3}{8}$ yd (Included)

CUTTING DIRECTIONS

Please ensure that all fabrics are ironed thoroughly before cutting them. $\frac{1}{4}$ " seam allowances are included. WOF means width of the fabric.

Fabric A

- Cut 1 (one) $12\frac{1}{2}$ " x $2\frac{1}{2}$ " strip.
- Cut 1 (one) $5\frac{1}{2}$ " x $1\frac{1}{2}$ " strip.
- Cut 1 (one) $2\frac{1}{2}$ " x $1\frac{1}{2}$ " rectangle.

Fabric B

- Cut 1 (one) $6\frac{1}{2}$ " x $2\frac{1}{2}$ " strip.

Fabric C

- Cut 1 (one) $3\frac{1}{2}$ " x $2\frac{1}{2}$ " rectangle.
-

Fabric D

- Cut 1 (one) $6\frac{1}{2}$ " x $2\frac{1}{2}$ " strip.
- Cut 1 (one) $5\frac{1}{2}$ " x $2\frac{1}{2}$ " rectangle.
- Cut 2 (two) $2\frac{1}{2}$ " x $1\frac{1}{2}$ " rectangles.

Fabric E

- Cut (one) $2\frac{1}{2}$ " x $8\frac{1}{2}$ " strip.

Fabric F

- Cut 2 (two) $12\frac{1}{2}$ " x $14\frac{1}{2}$ " rectangles.
- Cut 1 (one) $7\frac{1}{2}$ " x $2\frac{1}{2}$ " strip.
- Cut 1 (one) $5\frac{1}{2}$ " x $1\frac{1}{2}$ " strip.

Fabric G

- Cut 1 (one) $12\frac{1}{2}$ " x $3\frac{1}{2}$ " strip.

Fabric H

- Cut 1 (one) $8\frac{1}{2}$ " x $1\frac{1}{2}$ " strip.

Fabric I

- Cut 1 (one) $12\frac{1}{2}$ " x $2\frac{1}{2}$ " strip.
- Cut 1 (one) $12\frac{1}{2}$ " x $1\frac{1}{2}$ " strip.

Fabric J

- Cut 1 (one) $12\frac{1}{2}$ " x $2\frac{1}{2}$ " strip.

Fabric K

- Cut 1 (one) $8\frac{1}{2}$ " x $2\frac{1}{2}$ " strip.

Fabric L

- Cut 1 (one) $4\frac{1}{2}$ " x $2\frac{1}{2}$ " rectangle.

Fabric M

- Cut 1 (one) $1\frac{1}{2}$ " x WOF strip, then;
-Sub-cut into 2 (two) $1\frac{1}{2}$ " x $20\frac{1}{2}$ " strips.

CONSTRUCTION

Sew all rights sides together with $\frac{1}{4}$ " seam allowance, unless otherwise specified

- Join 1 (one) $5\frac{1}{2}$ " x $2\frac{1}{2}$ " strip from fabric **D** and 1 (one) $7\frac{1}{2}$ " x $2\frac{1}{2}$ " strip from fabric **F** right sides together. We will call this SS1.

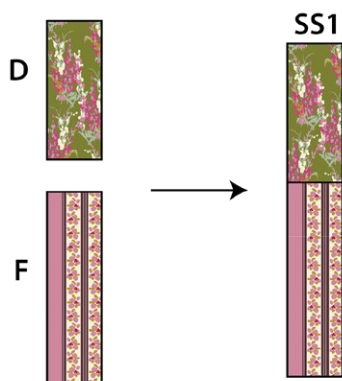


DIAGRAM 1

- Join 1 (one) $5\frac{1}{2}$ " x $1\frac{1}{2}$ " strip from fabric **A**, 1 (one) $5\frac{1}{2}$ " x $1\frac{1}{2}$ " strip from fabric **F** and 1 (one) $2\frac{1}{2}$ " x $1\frac{1}{2}$ " rectangle from fabric **D** right sides together. We will call this SS2.

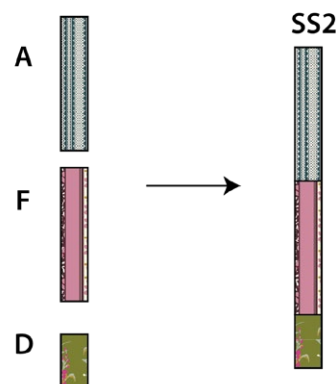


DIAGRAM 2

- Join 1 (one) $8\frac{1}{2}$ " x $2\frac{1}{2}$ " strip from fabric **K** and 1 (one) $4\frac{1}{2}$ " x $2\frac{1}{2}$ " rectangle from fabric **L** right sides together. We will call this SS3.

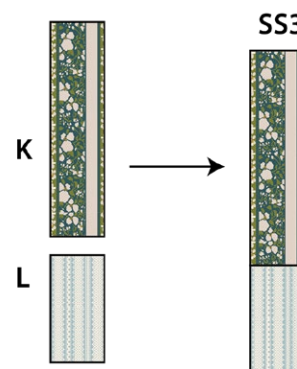


DIAGRAM 3

- Join 1 (one) $2\frac{1}{2}$ " x $1\frac{1}{2}$ " rectangle from fabric **A**, 1 (one) $8\frac{1}{2}$ " x $1\frac{1}{2}$ " strip from fabric **H** and 1 (one) $2\frac{1}{2}$ " x $1\frac{1}{2}$ " rectangle from fabric **D** right sides together. We will call this SS4.

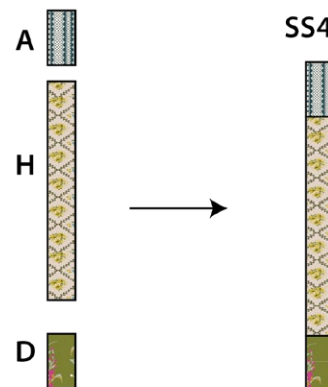


DIAGRAM 4

- Join 1 (one) $8\frac{1}{2}" \times 2\frac{1}{2}"$ strip from fabric **E** and 1 (one) $4\frac{1}{2}" \times 2\frac{1}{2}"$ rectangle from fabric **C** right sides together. We will call this SS5.

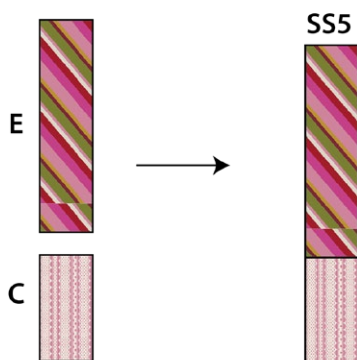


DIAGRAM 5

- Join 1 (one) $6\frac{1}{2}" \times 2\frac{1}{2}"$ strip from fabric **B** and 1 (one) $6\frac{1}{2}" \times 2\frac{1}{2}"$ strip from fabric **D** right sides together. We will call this SS6.

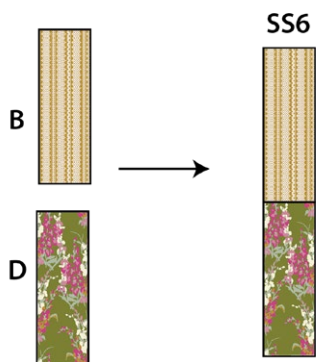


DIAGRAM 6

- Next, Join all the strips in the following order:
- Take 1 (one) $12\frac{1}{2}" \times 2\frac{1}{2}"$ strip from fabric **A**, 1 (one) SS1, 1 (one) $12\frac{1}{2}" \times 2\frac{1}{2}"$ strip from fabric **I**, 1 (one) SS2, 1 (one) $12\frac{1}{2}" \times 3\frac{1}{2}"$ strip from fabric **G**, 1 (one) SS3, 1 (one) SS4, 1 (one) SS5, 1 (one) SS6, 1 (one) $12\frac{1}{2}" \times 1\frac{1}{2}"$ strip from fabric **I** and 1 (one) $12\frac{1}{2}" \times 2\frac{1}{2}"$ strip from fabric **J**.
- Sew them all right sides together. This should measure $12\frac{1}{2}" \times 20\frac{1}{2}"$ rectangle.



$12\frac{1}{2}" \times 20\frac{1}{2}"$



DIAGRAM 7

- Sew the $12\frac{1}{2}" \times 20\frac{1}{2}"$ previously sewn rectangle in between 2 (two) $1\frac{1}{2}" \times 20\frac{1}{2}"$ strips from fabric **M** right sides together. This should measure $14\frac{1}{2}" \times 20\frac{1}{2}"$.

$1\frac{1}{2}" \times 20\frac{1}{2}"$

$12\frac{1}{2}" \times 20\frac{1}{2}"$



DIAGRAM 8

14½" x 20½"



DIAGRAM 9

Creating the back of the pillow:

- To make the envelope back for your pillow take both 12½" x 14½" rectangles from fabric **F** and on the 12½" side fold ½" twice, top stitch and press.

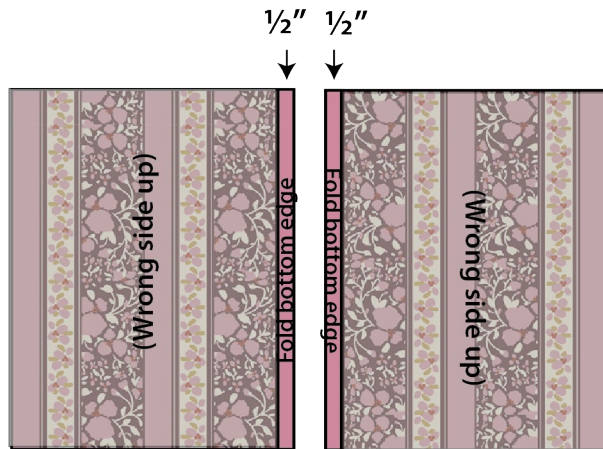


DIAGRAM 10

- Take the quilted pillow top and lay it flat right side up. Take one rectangle from fabric **F** and align it wrong side up to the left side of the pillow top.



DIAGRAM 11

- Take the other rectangle from fabric **F** and align it wrong side up to the right side of the pillow top.

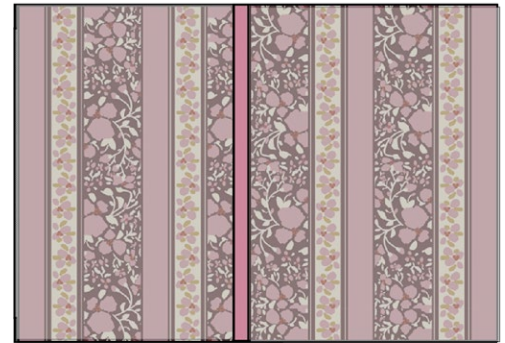


DIAGRAM 12

- Pin the three pieces in place and sew around the edges at ¼" seam allowance.



DIAGRAM 13

- Clip the corners and flip the piece to the right side of the fabric.
- Fill the pillow with a 14" x 20" pillow form and enjoy!

14" x 20"



DIAGRAM 14

XXXXXXXXXXXXXXXXXXXXXXXXXXXXXXXXXXXX

*Congratulations
& enjoy*

XXXXXXXXXXXXXXXXXXXXXXXXXXXXXXXXXXXX



artgalleryfabrics.com

NOTE: While all possible care has been taken to ensure the accuracy of this pattern, We are not responsible for printing errors or the way in which individual work varies.

Please read instructions carefully before starting the construction of this quilt. If desired, wash and iron your fabrics before starting to cut.

© 2025 Courtesy of Art Gallery Quilts LLC. All Rights Reserved.