

XXXXXX

A large, colorful quilt pattern composed of many small squares in various colors and patterns, including red, blue, green, and yellow, arranged in a grid-like fashion. The pattern is dense and intricate, featuring a variety of floral and geometric designs. The colors are vibrant and the overall effect is one of a traditional, handcrafted textile.

XXXXXXXXXXXXXXXXXXXXXXXXXXXX



AZULEJOS

QUILT DESIGNED BY AGFstudio

costeira

FABRICS DESIGNED BY AGF STUDIO



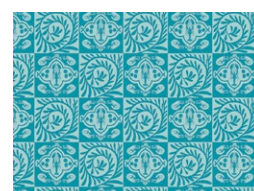
Fabric A
DSE-710
BLUE MINERALE



Fabric B
COS87304
NATURAL BOUQUET
MADEIRA



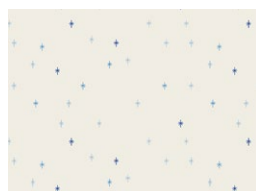
Fabric C
DSE727
AIRY



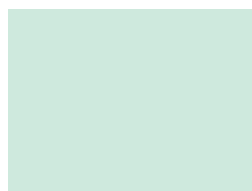
Fabric D
COS77305
AZULEJOS AZUIS



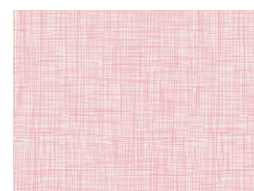
Fabric E
COS87300
BELOS CORAIS AZUIS



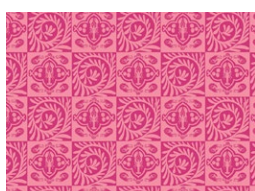
Fabric F
SKE80106
COBALT SPARKLE



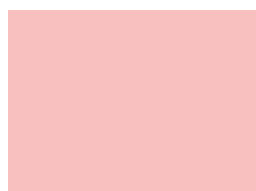
Fabric G
PE-451
ICY MINT



Fabric H (Binding)
COS87301
PORTO WEAVE DOCE



Fabric I
COS87305
AZULEJOS ROSADOS



Fabric J
PE-420
CRYSTAL PINK



Fabric K
COS87308
MOSAICO MARINHO MAR



Fabric L
COS77301
PORTO WEAVE SOL



BACKING
COS77306
ALGARVE SHORES

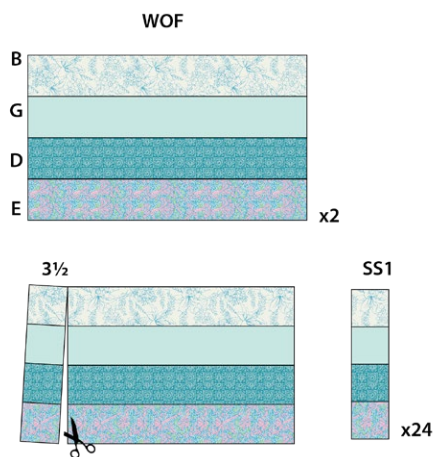


DIAGRAM 1

Strip Set 2:

- Take 1 (one) $3\frac{1}{2}$ " x WOF strip from fabrics **F**, **B**, **G**, **D** and sew them tight sides together in the order shown on diagram 2, repeat the same step 1 (one) more time.
- Cut 24 (twenty four) vertical strips every $3\frac{1}{2}$ ".

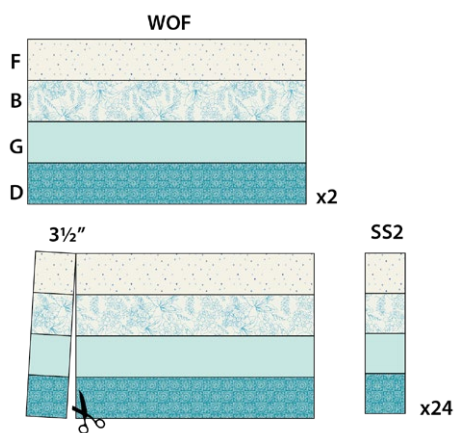


DIAGRAM 2

Strip Set 3:

- Take 1 (one) $3\frac{1}{2}$ " x WOF strip from fabrics **J**, **F**, **B** and **G**, sew them right sides together in the order shown on the diagram below and repeat the same step 1 (one) more time.
- Cut 24 (twenty four) vertical strips every $3\frac{1}{2}$ ".

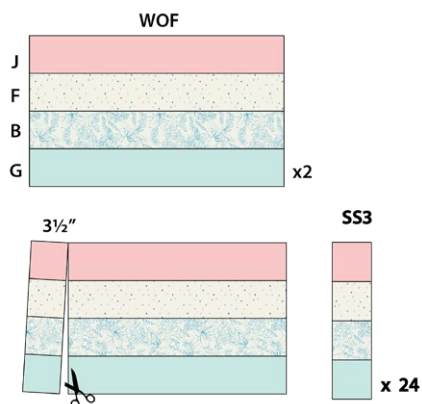


DIAGRAM 3

Strip Set 4:

- Take 1 (one) $3\frac{1}{2}$ " x WOF strip from fabrics **I**, **J**, **F** and **B**, sew them right sides together in the order shown on the diagram below, repeat the same step 1 (one) more time.
- Cut 24 (twenty four) vertical strips every $3\frac{1}{2}$ ".

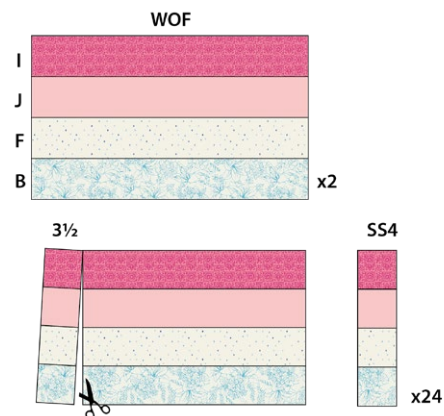


DIAGRAM 4

Stripe Set 5:

- Take 1 (one) $3\frac{1}{2}$ " x WOF strip from fabrics **H**, **I**, **J** and **F**, sew them right sides together in the order shown on diagram 5, repeat the same step 1 (one) more time.
- Cut 24 (twenty four) vertical strips every $3\frac{1}{2}$ ".

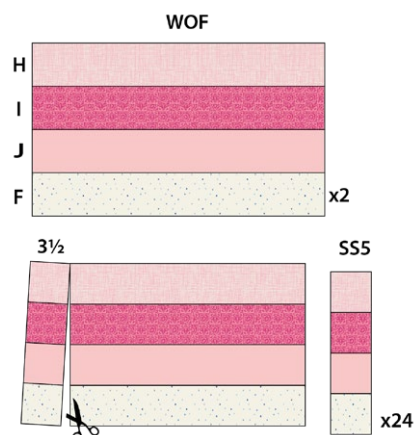


DIAGRAM 5

Stripe Set 6:

- Take 1 (one) 3½" x WOF strip from fabrics **G, D, E** and **A**, sew them right sides together in the order shown on the diagram below, repeat the same step 1 (one) more time.
- Cut 18 (eighteen) vertical strips every 3½".

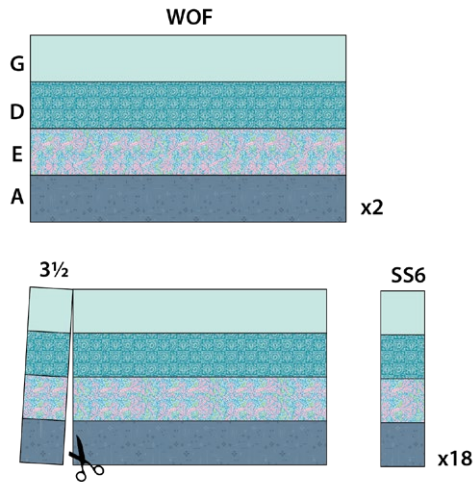


DIAGRAM 6

Stripe Set 7:

- Take 1 (one) 3½" x WOF strip from fabrics **C, H, I** and **J**, sew them right sides together in the order shown on the diagram below.
- Cut 12 (twelve) vertical strips every 3½".

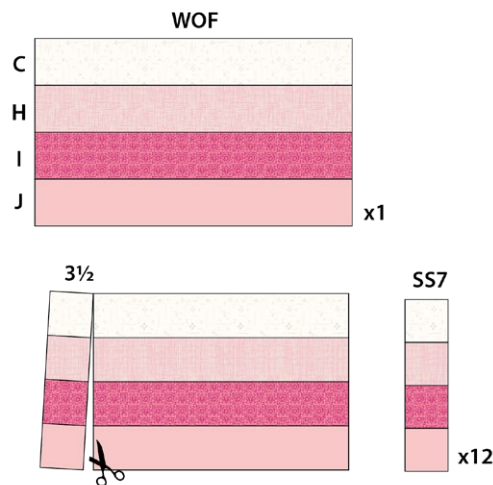


DIAGRAM 7

Stripe Set 8:

- Take 1 (one) 3½" x WOF strip from fabrics **B** and **L** and 2 (two) 3½" x WOF strips from fabrics **F, J, I, H** and **C**, sew them right sides together in the order shown on the diagram below.
- Cut 4 (four) strips every 3½".

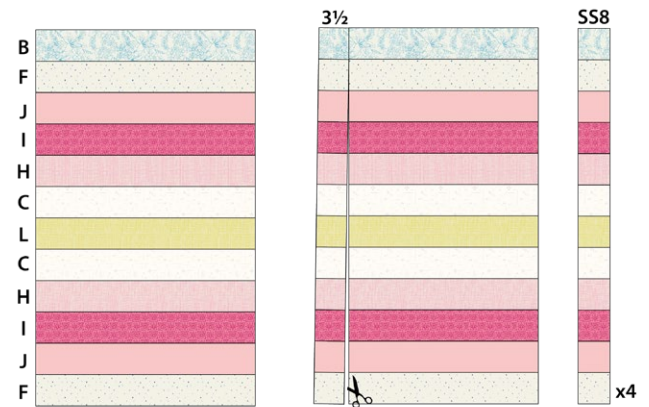


DIAGRAM 8

Stripe Set 9:

- Take 1 (one) $3\frac{1}{2}$ " x WOF strip from fabrics **K** and **F**, 2 (two) $3\frac{1}{2}$ " x WOF strips from fabrics **A**, **E**, **D**, **G** and **B**, sew them right sides together in the order shown on the diagram below.
- Cut 6 (six) strips every $3\frac{1}{2}$ ".

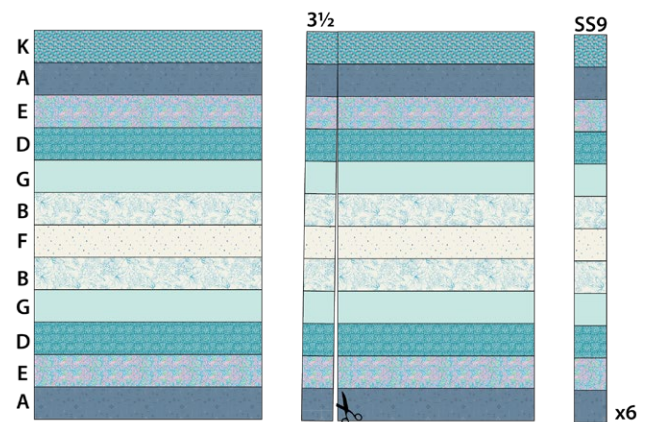


DIAGRAM 9

Block 1:

- Take 1 (one) Strip Set 1 (SS1), Strip Set 2 (SS2), Strip Set 3 (SS3), Strip Set 4 (SS4), Strip Set 5 (SS5) and sew them right sides together.
- This will be Block 1. and it should measure 12½" x 15½". Repeat these step 11 (eleven) more times.
- You should have 12 (twelve) Blocks 1 in total.

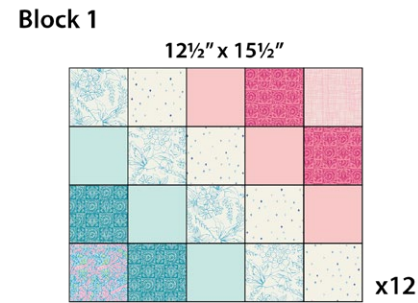
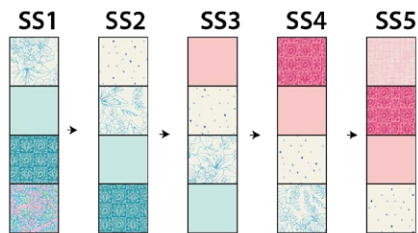


DIAGRAM 10

Block 2:

- Take 1 (one) Strip Set 5 (SS5), Strip Set 4 (SS4), Strip Set 3 (SS3), Strip Set 2 (SS2), Strip Set 1 (SS1) and sew them together.
- This will be Block 2. and it should measure 12½" x 15½". Repeat these step 11 (eleven) more times.
- You should have twelve (12) Blocks 2 in total.

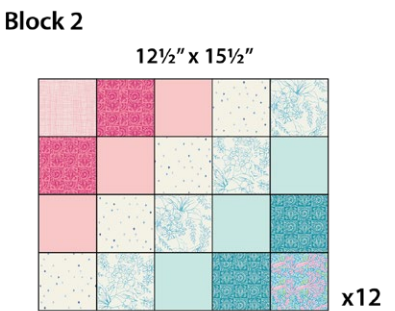
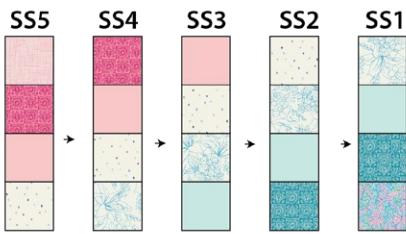


DIAGRAM 11

QUILT TOP

- For blocks and strip sets placement and arrangement see diagram below.

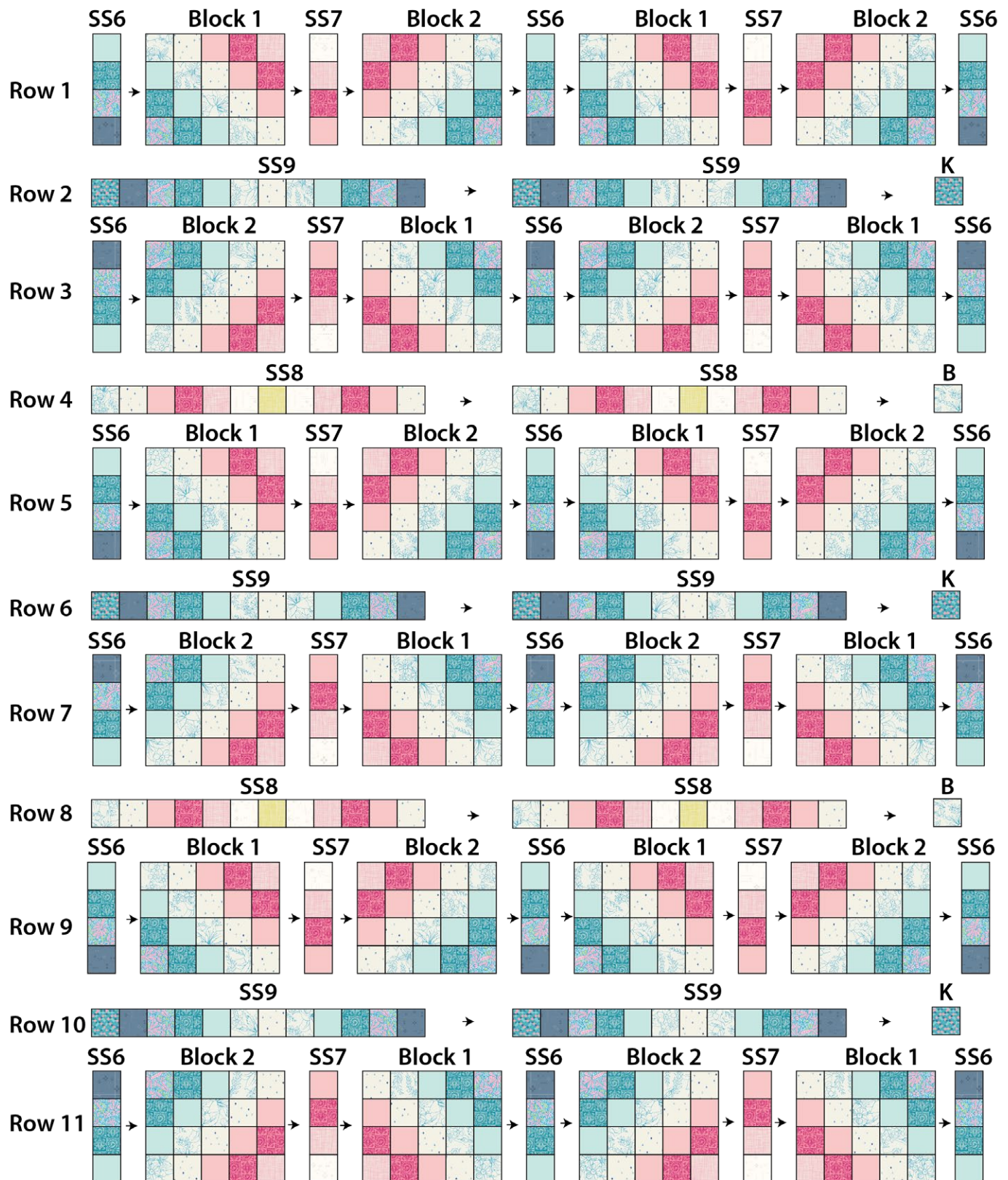


DIAGRAM 12

- Sew rows 1 through 11.

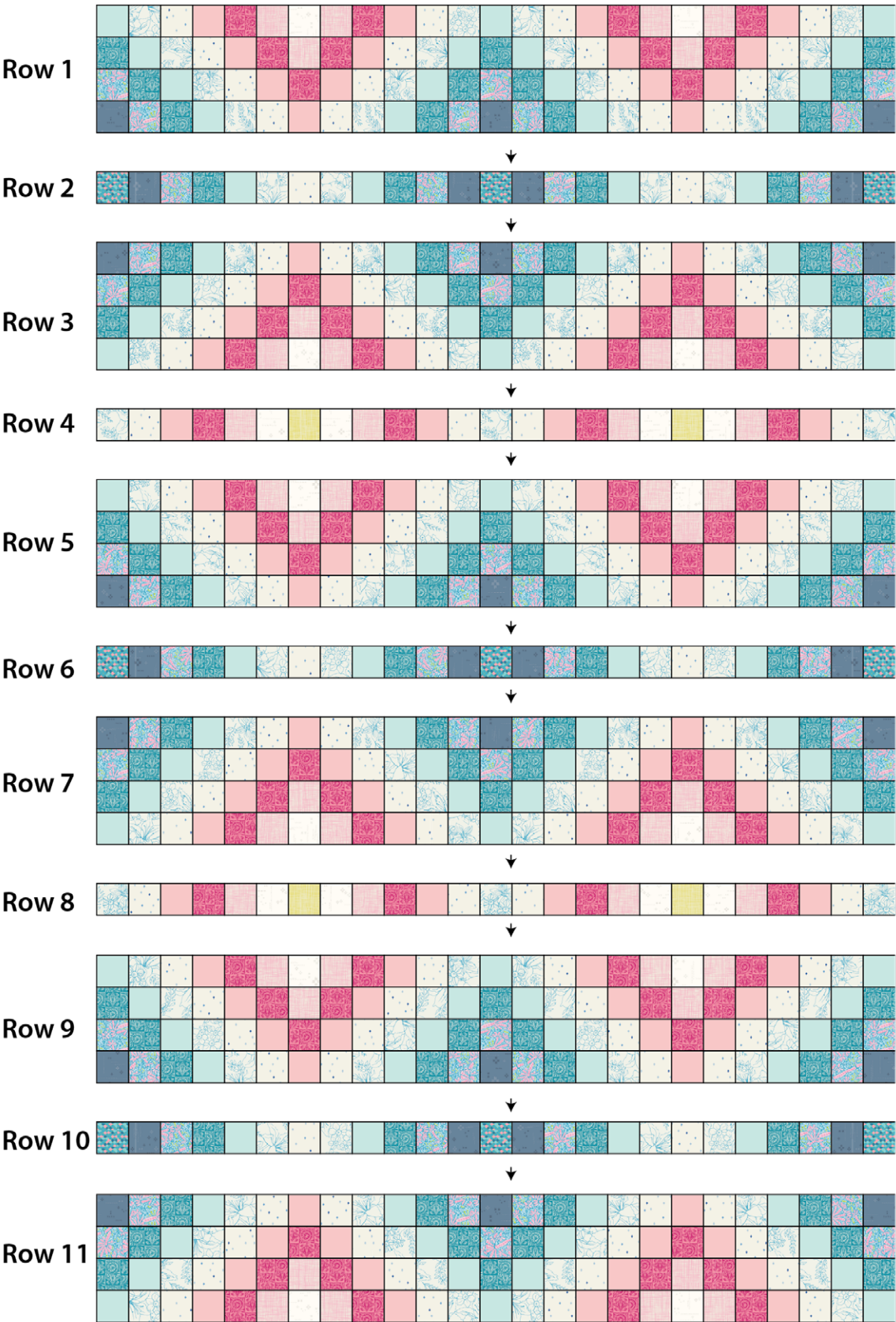


DIAGRAM 13

- Quilt as desired.

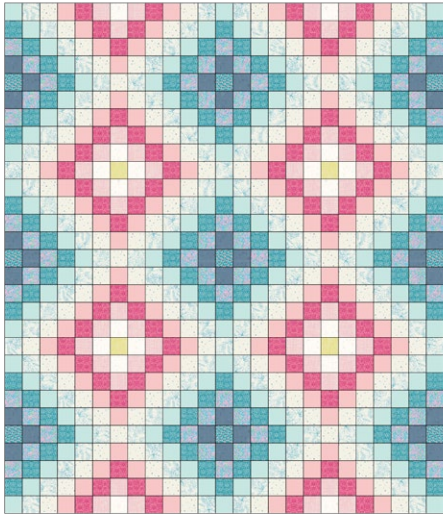


DIAGRAM 14

QUILT ASSEMBLY

Sew rights sides together.

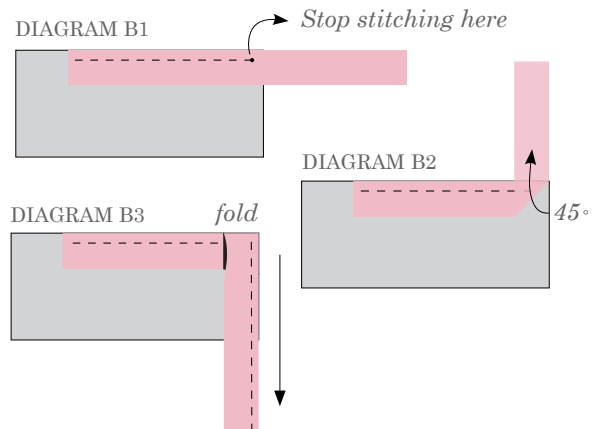
- Place BACKING FABRIC on a large surface wrong side up. Stretch it with masking tape against that surface.
- Place BATTING on top of backing fabric.
- Place TOP on top of the batting with right side facing up. Smooth away wrinkles using your hands.
- Pin all layers together and baste with basting thread, using long stitches. You can also use safety pins to join the layers.
- Machine or hand quilt starting at the center and working towards the corners. Remember that quilting motifs are a matter of personal preference. Have fun choosing yours!
- After you finished, trim excess of any fabric or batting, squaring the quilt to proceed to bind it.

BINDING

Sew rights sides together.

- Cut enough 1½" wide strips by the width of the fabric **H** to make a final strip 336" long. Start sewing the binding strip in the middle of one of the sides of the quilt, placing the strip right side down and leaving an approximated 5" tail. Sew with ¼" seam allowance (using straight stitch), aligning the strip's raw edge with the quilt top's raw edge.

- Stop stitching ¼" before the edge of the quilt (DIAGRAM B 1). Clip the threads. Remove the quilt from under the machine presser foot. Fold the strip in a motion of 45° and upward, pressing with your fingers (DIAGRAM B2). Hold this fold with your finger, bring the strip down in line with the next edge, making a horizontal fold that aligns with the top edge of the quilt (DIAGRAM B3). Start sewing at ¼" of the border, stitching all the layers. Do the same in the four corners of the quilt.
- Stop stitching before you reach the last 5 or 6 inches. Cut the threads and remove the quilt from under the machine presser foot. Lay the loose ends of the binding flat along the quilt edge, folding the ends back on themselves where they meet. Press them together to form a crease. Using this crease as the stitching line, sew the two open ends of the binding with right sides together (you can help yourself marking with a pencil if the crease is difficult to see).
- Trim seam to ¼" and press open. Complete the sewing. Turn binding to back of the quilt, turn raw edge inside and stitch by hand using blind stitch.
- If you are using our 2.5 edition (binding fabric), click or scan this QR code to see a tutorial on how to use this specialty fabric.



XXXXXXXXXXXXXXXXXXXXXXXXXXXXXXXXXXXX

*Congratulations
& enjoy*

XXXXXXXXXXXXXXXXXXXXXXXXXXXXXXXXXXXX



artgalleryfabrics.com

NOTE: While all possible care has been taken to ensure the accuracy of this pattern, We are not responsible for printing errors or the way in which individual work varies.

Please read instructions carefully before starting the construction of this quilt. If desired, wash and iron your fabrics before starting to cut.

© 2025 Courtesy of Art Gallery Quilts LLC. All Rights Reserved.