

SLOW SUMMER Collection

PROJECT SHEET



Some of the projects featured in our lookbooks link back to patterns that were originally created in the past with different fabric selections. This project sheet will serve you as a quick reference to find and replace with the specific fabrics we used for this project. Happy sewing!



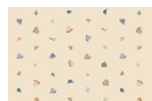
FABRICS DESIGNED BY SUZY QUILTS



FABRIC A
SLS99311
TINY MOON RAIN



FABRIC B (BACKING)
SLS99302
COLOR BLOCKS HAZE



FABRIC C
SLS99308
SHELLS PEARL



FABRIC D
SLS99301
SUSANS LILAC



FABRIC E
PE-444
PEACH SHERBET



FABRIC F
PE-425
MAUVELOUS



FABRIC G
PE-426
APRICOT CREPE



FABRIC H (BINDING)
BINEVO60417
BOUND TO EVOLVE

PROJECT INFO



PROJECT NAME: HONEYMOON TABLE RUNNER

DESIGNED BY: AGF STUDIO

FINISHED SIZE: 64½" x 18½"

[CLICK HERE FOR PATTERN](#)

FREE PATTERN

PLEASE CONSULT PATTERN FOR YARDAGE REQUIREMENTS.