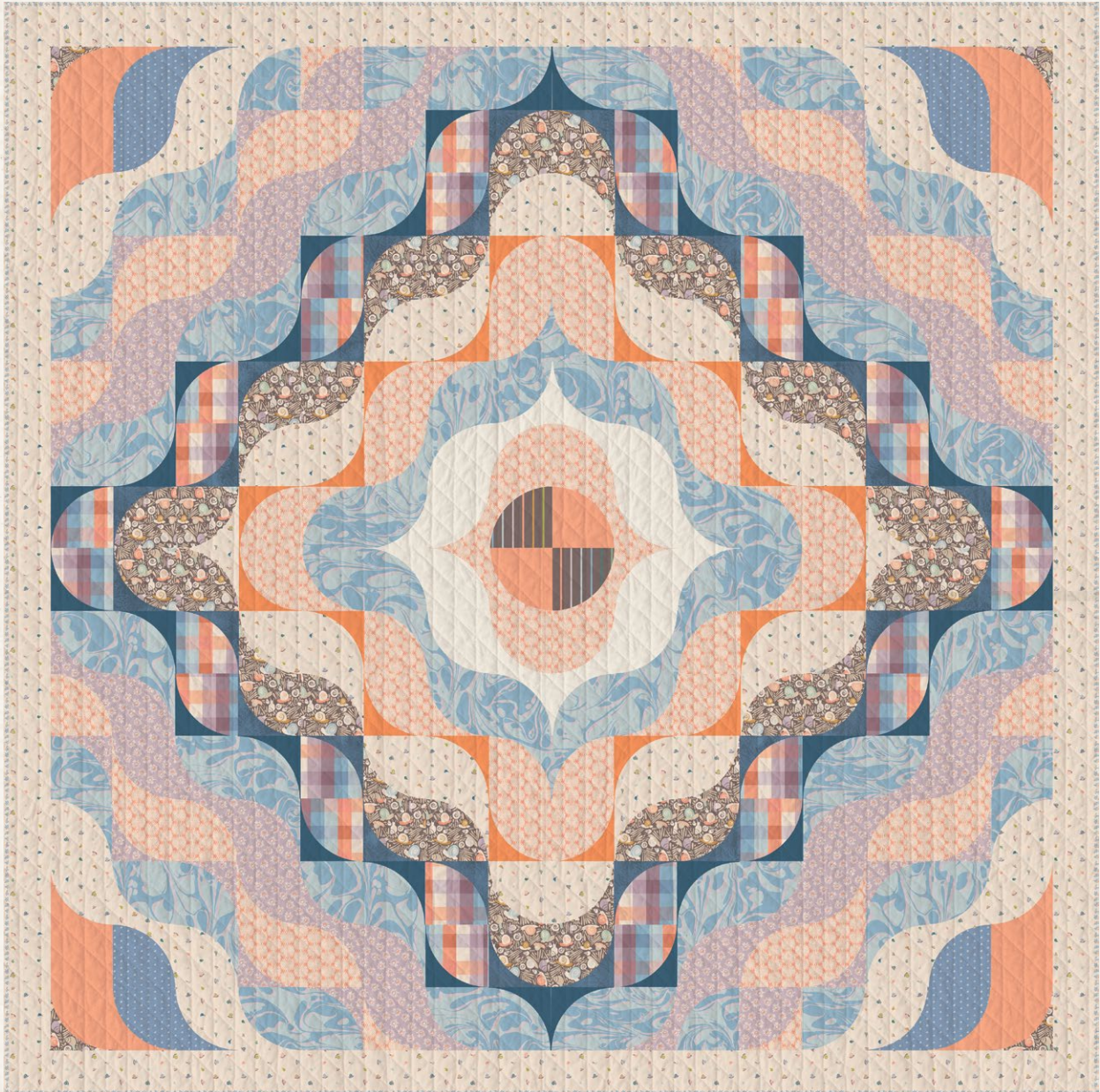


# radiant waves





# radiant waves

QUILT DESIGNED BY *AGFstudio*

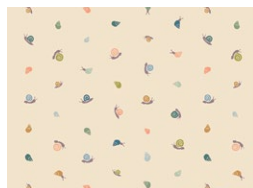
*slow*  *summer*

FABRICS DESIGNED BY SUZY QUILTS



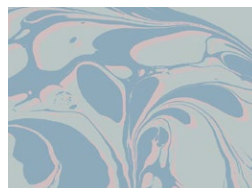
**Fabric A**

SLS99311  
TINY MOON RAIN



**Fabric B**

SLS99308  
SHEELS PEARL



**Fabric C**

SLS99310  
MARBLE GLACIER



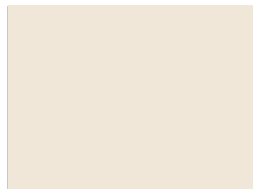
**Fabric D**

SLS99303  
FIREWORKS SWEET PEACH



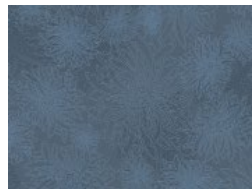
**Fabric E**

SLS99300  
SNAIL DRIFTWOOD



**Fabric F**

PE540  
COCONUT MILK



**Fabric G**

FE546  
WASHED DENIM



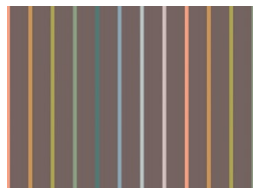
**Fabric H**

PE454  
MEDITERRANEO



**Fabric I**

SLS99302  
COLOR BLOCK HAZE



**Fabric J**

SLS99309  
TINY STRIPE DRIFTWOOD



**Fabric K**

PE426  
APRICOT CREPE



**Fabric L**

SLS99301  
SUSANS LILAC



**Fabric M**

PE539  
MARMALADE



**Fabric N (Binding)**

BINEVO60417  
BOUND TO DIVORCE



**Backing**

SLS99304  
TINY STRIPE PEARL



# radiant waves

FINISHED SIZE | 86½" x 86½"

## FABRIC REQUIREMENTS

Fabric <b>A</b>	SLS99311	½ yd.
Fabric <b>B</b>	SLS99308	2 ⅜ yd.
Fabric <b>C</b>	SLS99310	2 ¼ yd.
Fabric <b>D</b>	SLS99303	1 ⅞ yd.
Fabric <b>E</b>	SLS99300	1 yd.
Fabric <b>F</b>	PE540	⅝ yd.
Fabric <b>G</b>	FE546	⅝ yd.
Fabric <b>H</b>	PE454	⅝ yd.
Fabric <b>I</b>	SLS99302	⅞ yd.
Fabric <b>J</b>	SLS99309	¼ yd.
Fabric <b>K</b>	PE426	⅝ yd.
Fabric <b>L</b>	SLS99301	1 ⅜ yd.
Fabric <b>M</b>	PE539	⅜ yd.
Fabric <b>N</b>	BINEVO60417	¾ yd.

BACKING FABRIC  
SLS99304 8 yds (Suggested)

BINDING FABRIC  
Fabric **N** BINEVO60417 ¾ yd. (Included)

## CUTTING DIRECTIONS

Please ensure that all fabrics are ironed thoroughly before cutting them. ¼" seam allowances are included. WOF means width of the fabric.

### Fabric A

- Cut 8 (eight) Template 1.
- Cut 4 (four) Template 2.

### Fabric B

- Cut 36 (thirty six) Template 1.
- Cut 24 (twenty four) Template 2.
- Cut 9 (nine) 3½" x WOF strips.

### Fabric C

- Cut 68 (sixty eight) Template 1.
- Cut 32 (thirty two) Template 2.

### Fabric D

- Cut 44 (forty four) Template 1.
- Cut 28 (twenty eight) Template 2.

### Fabric E

- Cut 28 (twenty eight) Template 1.
- Cut 16 (sixteen) Template 2.

### Fabric F

- Cut 8 (eight) Template 1.
- Cut 12 (twelve) Template 2.

### Fabric G

- Cut 28 (twenty eight) Template 2.

### Fabric H

- Cut 32 (thirty two) Template 2.



















## QUILT ASSEMBLY

*Sew rights sides together.*

- Place BACKING FABRIC on a large surface wrong side up. Stretch it with masking tape against that surface.
- Place BATTING on top of backing fabric.
- Place TOP on top of the batting with right side facing up. Smooth away wrinkles using your hands.
- Pin all layers together and baste with basting thread, using long stitches. You can also use safety pins to join the layers.
- Machine or hand quilt starting at the center and working towards the corners. Remember that quilting motifs are a matter of personal preference. Have fun choosing yours!
- After you finished, trim excess of any fabric or batting, squaring the quilt to proceed to bind it.

## BINDING

*Sew rights sides together.*

- Cut enough strips  $2\frac{1}{2}$ " wide by the width of the fabric **N** to make a final strip 356" long. Start sewing the binding strip in the middle of one of the sides of the quilt, placing the strip right side down and leaving an approximated 5" tail. Sew with  $\frac{1}{4}$ " seam allowance (using straight stitch), aligning the strip's raw edge with the quilt top's raw edge.
- Stop stitching  $\frac{1}{4}$ " before the edge of the quilt (DIAGRAM B 1). Clip the threads. Remove the quilt from under the machine presser foot. Fold the strip in a motion of  $45^\circ$  and upward, pressing with your fingers (DIAGRAM B2). Hold this fold with your finger, bring the strip down in line with the next edge, making a horizontal fold that aligns with the top edge of the quilt (DIAGRAM B3). Start sewing at  $\frac{1}{4}$ " of the border, stitching all the layers. Do the same in the four corners of the quilt.

- Stop stitching before you reach the last 5 or 6 inches. Cut the threads and remove the quilt from under the machine presser foot. Lay the loose ends of the binding flat along the quilt edge, folding the ends back on themselves where they meet. Press them together to form a crease. Using this crease as the stitching line, sew the two open ends of the binding with right sides together (you can help yourself marking with a pencil if the crease is difficult to see).
- Trim seam to  $\frac{1}{4}$ " and press open. Complete the sewing. Turn binding to back of the quilt, turn raw edge inside and stitch by hand using blind stitch.
- If you are using our 2.5 edition (binding fabric), click or scan this QR code to see a tutorial on how to use this specialty fabric.

