



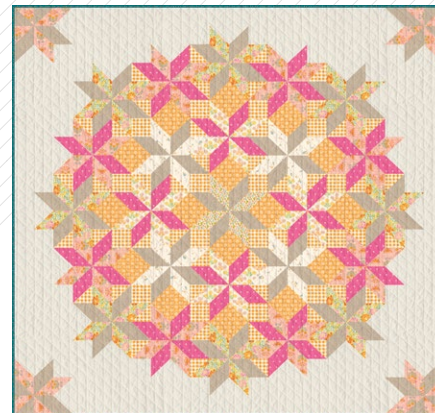


# PRIMROSE

QUILT DESIGNED BY *AGEstudio*

## Marigold

FABRICS DESIGNED BY MAUREEN CRACKNELL



**Fabric A**  
MRG55304  
TOKENBLOOMS



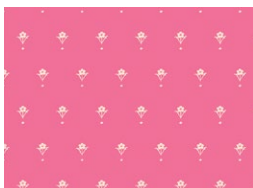
**Fabric B**  
DEN-L-4000  
SOFT-SAND



**Fabric C**  
MRG55308  
EPHEMERAL BLOOMS



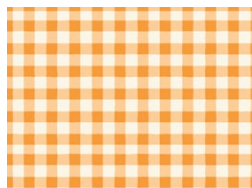
**Fabric D**  
MRGL55313  
FORAGING FLUTTER SUN



**Fabric E**  
MRG55301  
PAINTED PORCELAIN ROSE



**Fabric F**  
MRG55300  
WOODS ROSE GARDEN



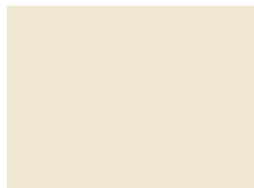
**Fabric G**  
PLDS911  
SMALL PLAID OF MY DREAMS MARIGOLD



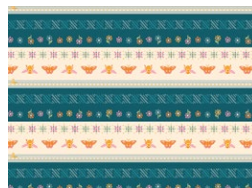
**Fabric H**  
MRG55307  
ANNUAL MIGRATION



**Fabric I**  
MRG55303  
IN A ROW



**Fabric J**  
PE-436  
CREME DE LA CREME



**Fabric K**  
**BINDING**  
BINMRG55  
FLUTTER BOUND



**BACKING**  
MRG55312  
FOLKHOUSE DREAM



# PRIMROSE

FINISHED SIZE | 88½" x 88½"

## FABRIC REQUIREMENTS

Fabric <b>A</b>	MRG55304	5⁄8 yd.
Fabric <b>B</b>	DEN-L-4000	1½ yd.
Fabric <b>C</b>	MRG55308	¾ yd.
Fabric <b>D</b>	MRGL55313	¾ yd.
Fabric <b>E</b>	MRG55301	1½ yd.
Fabric <b>F</b>	MRG55300	7⁄8 yd.
Fabric <b>G</b>	PLDS911	1½ yd.
Fabric <b>H</b>	MRG55307	1 yd.
Fabric <b>I</b>	MRG55303	7⁄8 yd.
Fabric <b>J</b>	PE-436	3¼ yd.
Fabric <b>K</b>	BINMRG55	¾ yd.

BACKING FABRIC  
MRG55312 8 yds *(Suggested)*

BINDING FABRIC  
Fabric **K** BINMRG55 *(Included)*

## CUTTING DIRECTIONS

*Please ensure that all fabrics are ironed thoroughly before cutting them. ¼" seam allowances are included. WOF means width of the fabric.*

### Fabric A

- Cut 2 (two) 9¾" x WOF strips, then:  
Sub-cut into 5 (five) 9¾" squares.

### Fabric B

- Cut 4 (four) 9¾" x WOF strips, then:  
Sub-cut into 18 (eighteen) 9¾" squares.

### Fabric C

- Cut 1 (one) 9¾" x WOF strip, then:  
Sub-cut into 2 (two) 9¾" squares.

### Fabric D

- Cut 1 (one) 9¾" x WOF strip, then:  
Sub-cut into 5 (five) 9¾" squares.

### Fabric E

- Cut 4 (four) 9¾" x WOF strips, then:  
Sub-cut into 13 (thirteen) 9¾" squares.

### Fabric F

- Cut 3 (three) 9¾" x WOF strips, then:  
Sub-cut into 9 (nine) 9¾" squares.

### Fabric G

- Cut 4 (four) 9¾" x WOF strips, then:  
Sub-cut into 16 (sixteen) 9¾" squares.

### Fabric H

- Cut 3 (three) 9¾" x WOF strips, then:  
Sub-cut into 9 (nine) 9¾" squares.  
Sub-cut into 7 (seven) 4½" squares.

- Cut 1 (one)  $4\frac{1}{2}$ " x WOF strip, then:  
Sub-cut into 9 (nine)  $4\frac{1}{2}$ " squares.

### Fabric I

- Cut 3 (three)  $9\frac{3}{4}$ " x WOF strips, then:  
Sub-cut into 9 (nine)  $9\frac{3}{4}$ " squares.

### Fabric J

- Cut 2 (two)  $9\frac{3}{4}$ " x WOF strips, then:  
Sub-cut into 8 (eight)  $9\frac{3}{4}$ " squares.
- Cut 19 (nineteen)  $4\frac{1}{2}$ " x WOF strips, then:  
Sub-cut into:  
4 (four)  $32\frac{1}{2}$ " x  $4\frac{1}{2}$ " strips.  
4 (four)  $28\frac{1}{2}$ " x  $4\frac{1}{2}$ " strips.  
4 (four)  $20\frac{1}{2}$ " x  $4\frac{1}{2}$ " strips.  
4 (four)  $16\frac{1}{2}$ " x  $4\frac{1}{2}$ " strips.  
8 (eight)  $12\frac{1}{2}$ " x  $4\frac{1}{2}$ " strips.  
8 (eight)  $8\frac{1}{2}$ " x  $4\frac{1}{2}$ " rectangles.

### Fabric K

- Cut 9 (nine)  $2\frac{1}{2}$ " x WOF strips. **(Binding)**

## CONSTRUCTION

*Sew all rights sides together with  $\frac{1}{4}$ " seam allowance.*

### Half Square Triangle (HST) Construction.

#### Magic 8 Construction:

- Start by placing 1 (one)  $9\frac{3}{4}$ " square from fabric **A** and **E** right sides facing together.
- Mark a diagonal line across both diagonals on the wrong side of the top fabric square.

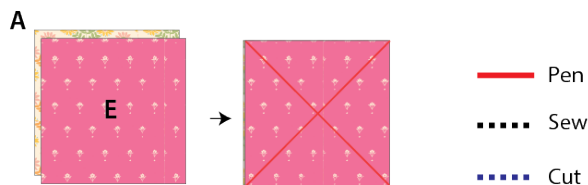


DIAGRAM 1

- Sew a SCANT  $\frac{1}{4}$ " seam on each side of both diagonal line and press the sewn square to set the seams.
- To separate the square into 8 (eight) units you will be making four cuts: a vertical, a horizontal, and two diagonal. As you make the cuts, don't rotate the fabric or your pieces may shift position. Instead, rotate the mat or walk around it.

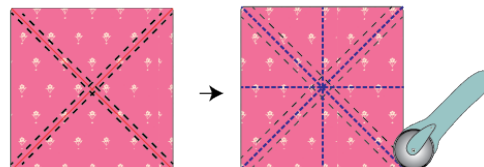


DIAGRAM 2

- Open the blocks outward and lightly press. Be very careful to only press up and down, NOT back and forth so as not to stretch them. Your seam should be pressed (both layers) toward the darker color.
- Trim each half square triangle (HST) to a  $4\frac{1}{2}$ " square.
- Repeat this step one more time with the same fabrics. You should get a total of 16 (sixteen) **A-E** HST units.

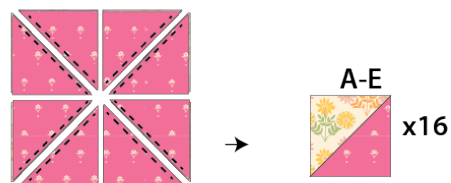


DIAGRAM 3



- Repeat the eight at a time HST method and make the following combinations. See diagrams 4 and 5.

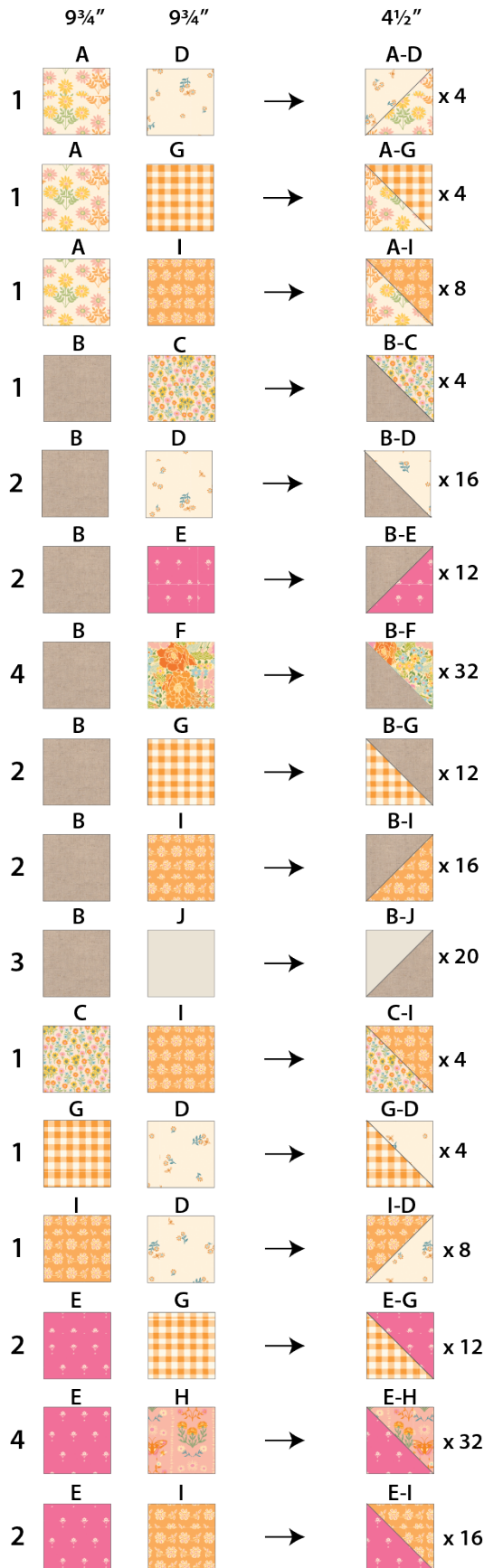


DIAGRAM 4

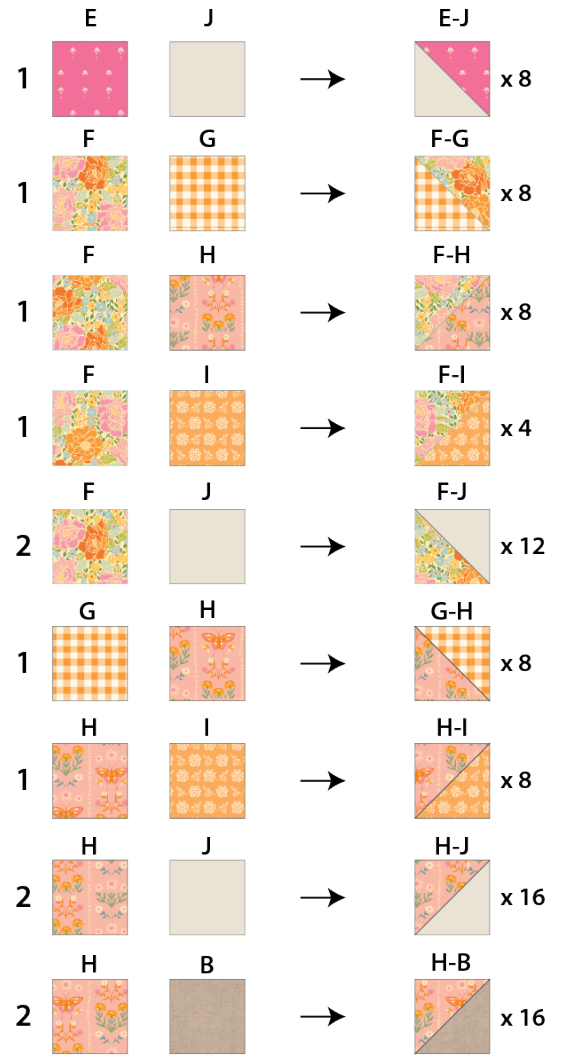


DIAGRAM 5

- After you have all the HST units ready we will make 4 (four) identical blocks.
- For HST placements and attachments see diagram 6.







## QUILT ASSEMBLY

*Sew rights sides together.*

- Place BACKING FABRIC on a large surface wrong side up. Stretch it with masking tape against that surface.
- Place BATTING on top of backing fabric.
- Place TOP on top of the batting with right side facing up. Smooth away wrinkles using your hands.
- Pin all layers together and baste with basting thread, using long stitches. You can also use safety pins to join the layers.
- Machine or hand quilt starting at the center and working towards the corners. Remember that quilting motifs are a matter of personal preference. Have fun choosing yours!
- After you finished, trim excess of any fabric or batting, squaring the quilt to proceed to bind it.

## BINDING

*Sew rights sides together.*

- Cut enough strips  $2\frac{1}{2}$ " wide by the width of the fabric **K** to make a final strip 308" long. Start sewing the binding strip in the middle of one of the sides of the quilt, placing the strip right side down and leaving an approximated 5" tail. Sew with  $\frac{1}{4}$ " seam allowance (using straight stitch), aligning the strip's raw edge with the quilt top's raw edge.
- Stop stitching  $\frac{1}{4}$ " before the edge of the quilt (DIAGRAM B 1). Clip the threads. Remove the quilt from under the machine presser foot. Fold the strip in a motion of  $45^\circ$  and upward, pressing with your fingers (DIAGRAM B2). Hold this fold with your finger, bring the strip down in line with the next edge, making a horizontal fold that aligns with the top edge of the quilt (DIAGRAM B3). Start sewing at  $\frac{1}{4}$ " of the border, stitching all the layers. Do the same in the four corners of the quilt.

- Stop stitching before you reach the last 5 or 6 inches. Cut the threads and remove the quilt from under the machine presser foot. Lay the loose ends of the binding flat along the quilt edge, folding the ends back on themselves where they meet. Press them together to form a crease. Using this crease as the stitching line, sew the two open ends of the binding with right sides together (you can help yourself marking with a pencil if the crease is difficult to see).
- Trim seam to  $\frac{1}{4}$ " and press open. Complete the sewing. Turn binding to back of the quilt, turn raw edge inside and stitch by hand using blind stitch.
- If you are using our 2.5 edition (binding fabric), click or scan this QR code to see a tutorial on how to use this specialty fabric.

