

This image shows a vertical strip of a quilt pattern. The design consists of a repeating sequence of overlapping circles. Each circle is filled with a dense floral print in shades of blue, red, and green. The circles are arranged in a grid-like fashion, with some overlapping horizontally and vertically. The background of the quilt is a light cream color, featuring a subtle, wavy or ribbed texture. The entire quilt strip is bordered by a dark blue material with a small, repeating geometric pattern. The overall aesthetic is traditional and colorful.

XXXXXXXXXXXXXXXXXXXX



ABUNDANT BLOOMS



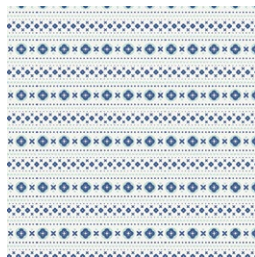
DESIGNED BY AGFstudio



FABRICS DESIGNED BY AGF STUDIO



Fabric A
FWR-34886
WILDFLOWER FIELDS



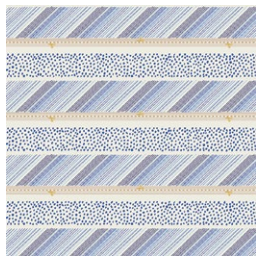
Fabric B
FWR-34891
GREENHOUSE BLOOMS



Fabric C
FE-533
WINTER WHEAT



Fabric D
DEN-S-2001
INDIGO SHADOW



Fabric E
BIN25111
DOTTED SLANT BOUND





FINISHED SIZE | 69½" x 20½"

FABRIC REQUIREMENTS

Fabric A	FWR-34886	1¼ yds.
Fabric B	FWR-34891	⅝ yd.
Fabric C	FE-533	1⅝ yds.
Fabric D	DEN-S-2001	¾ yd.
Fabric E	BIN-25111	¾ yd.

BINDING FABRIC

Fabric **E** BIN-25111 (Included)

BACKING FABRIC

FWR-34886 2⅝ yds (Suggested)

CUTTING DIRECTIONS

¼" seam allowances are included.

WOF means width of fabric.

- Fifty six (56) template 1 from fabric **A**
- Fourteen (14) 5⅞" squares from fabric **B**
- Fourteen (14) 5⅞" squares from fabric **C**
- Four (4) 12" squares from fabric **C**
- Four (4) 12" squares from fabric **D**
- Five (5) 1½" x WOF strips from fabric **E**

CONSTRUCTION

Sew all rights sides together with ¼" seam allowance.

HST construction

- Because we want fabric **B** print face the lines vertically, make sure to pay attention on your fabric placement when constructing your hst's.
- Take seven (7) **B** and **C** 5⅞" squares to have a total of fourteen (14) hst's.
- Draw a line diagonally corner to corner using a mechanical pencil or frixion pen.
- Stitch ¼" on each side of the drawn lines.
- Cut the pieces apart along the marked diagonal line.
- Press and trim to 5½" x 5½".

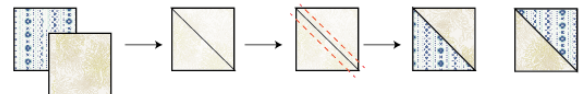


DIAGRAM 1

- Repeat the same method, taking seven (7) **B** and **C** 5⅞" squares to have a total of fourteen (14) hst's and cutting the hst's on the opposite direction.

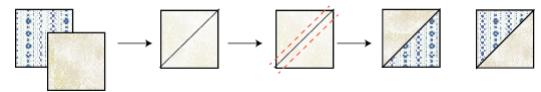


DIAGRAM 2

Magic 8 technique:

- Take one (1) fabric **C** and fabric **D** 12" squares and place them with right sides together.
- Draw a line diagonally corner to corner using a mechanical pencil or Frixion pen.
- Stitch $\frac{1}{4}$ " on each side of the drawn lines.
- Cut the squares in both directions.
- Cut the squares diagonally corner to corner.
- Trim excess fabric. Your eight (8) HST should measure $5\frac{1}{2}$ " x $5\frac{1}{2}$ "

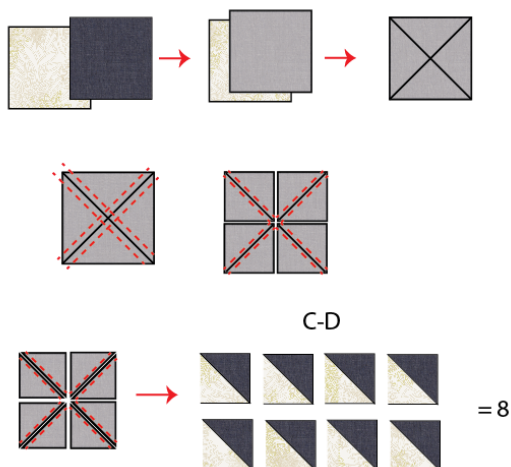


DIAGRAM 3

- Repeat the same magic 8 construction to create a total of thirty two (32) **C-D** hst's.
- You will use a total of twenty eight (28).

- Now, take fifty six (56) fabric **A** petal cut outs from template 1 and place steam-a-seam double side fusible tape on the wrong side of the petal fabric (following the instructions of the seam-a-seam).
- Take twenty eight (28) **B-C**, twenty eight (28) **C-D** blocks and fifty six (56) petals from fabric **A** and place one petal on each block following the diagram below.
- Press and steam carefully.
- Secure the petals with a decorative stitch.

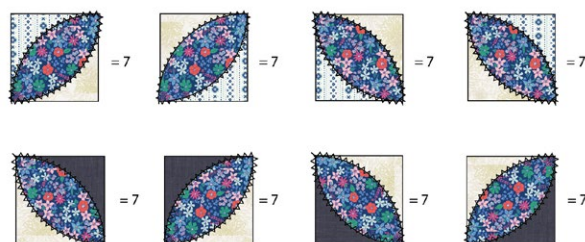


DIAGRAM 4

- Follow the diagram below for each block assembly.
- Then sew each row.

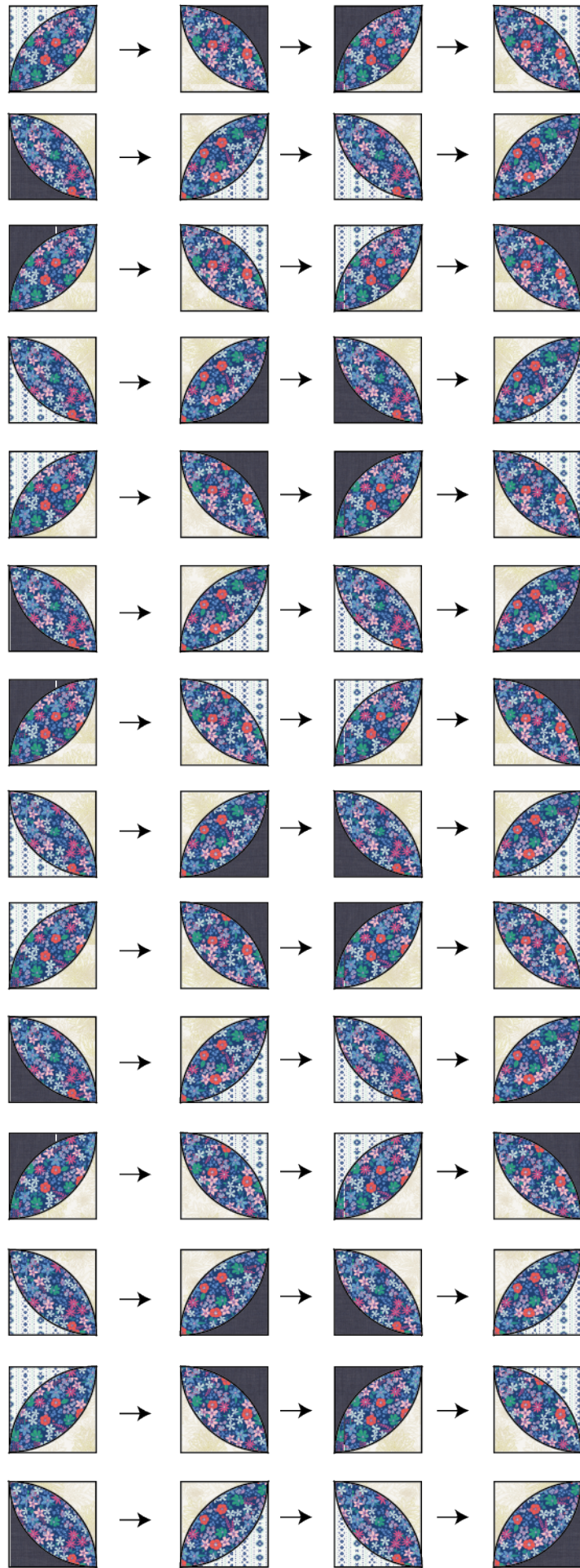


DIAGRAM 5



DIAGRAM 6

TABLE RUNNER ASSEMBLY

Sew rights sides together.

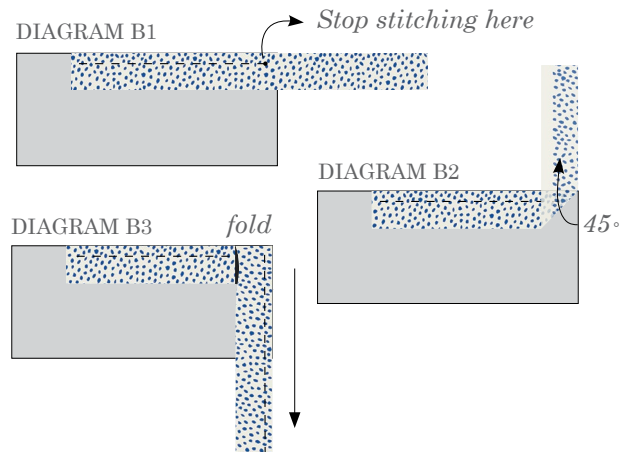
- Place BACKING FABRIC on a large surface wrong side up. Stretch it with masking tape against that surface.
- Place BATTING on top of backing fabric.
- Place TOP on top of the batting with right side facing up. Smooth away wrinkles using your hands.
- Pin all layers together and baste with basting thread, using long stitches. You can also use safety pins to join the layers.
- Machine or hand quilt starting at the center and working towards the corners. Remember that quilting motifs are a matter of personal preference. Have fun choosing yours!
- After you finished, trim excess of any fabric or batting, squaring the quilt to proceed to bind it.

BINDING

Sew rights sides together.

- Cut enough strips 2½" wide by the width of the fabric **E** to make a final strip 190" long. Start sewing the binding strip in the middle of one of the sides of the quilt, placing the strip right side down and leaving an approximated 5" tail. Sew with ¼" seam allowance (using straight stitch), aligning the strip's raw edge with the quilt top's raw edge.
- Stop stitching ¼" before the edge of the quilt (DIAGRAM B 1). Clip the threads. Remove the quilt from under the machine presser foot. Fold the strip in a motion of 45° and upward, pressing with your fingers (DIAGRAM B2). Hold this fold with your finger, bring the strip down in line with the next edge, making a horizontal fold that aligns with the top edge of the quilt (DIAGRAM B3). Start sewing at ¼" of the border, stitching all the layers. Do the same in the four corners of the quilt.

- Stop stitching before you reach the last 5 or 6 inches. Cut the threads and remove the quilt from under the machine presser foot. Lay the loose ends of the binding flat along the quilt edge, folding the ends back on themselves where they meet. Press them together to form a crease. Using this crease as the stitching line, sew the two open ends of the binding with right sides together (you can help yourself marking with a pencil if the crease is difficult to see).
- Trim seam to ¼" and press open. Complete the sewing. Turn binding to back of the quilt, turn raw edge inside and stitch by hand using blind stitch.



- If you are using our 2.5 edition (binding fabric), click or scan this QR code to see a tutorial on how to use this specialty fabric.



XXXXXXXXXXXXXXXXXXXXXXXXXXXXXXXXXXXX

*Congratulations
& enjoy*

XXXXXXXXXXXXXXXXXXXXXXXXXXXXXXXXXXXX



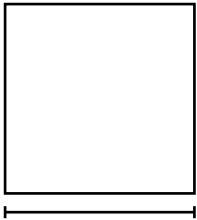
artgalleryfabrics.com

NOTE: While all possible care has been taken to ensure the accuracy of this pattern, We are not responsible for printing errors or the way in which individual work varies.

Please read instructions carefully before starting the construction of this quilt. If desired, wash and iron your fabrics before starting to cut.

© 2025 Courtesy of Art Gallery Quilts LLC. All Rights Reserved.

Printer Test



1"
Square

