

Home GROWN

QUILT DESIGNED BY AGFstudio

POTAGER

FABRICS DESIGNED BY SHARON HOLLAND



Fabric A
PTG43403
PEACEFUL MEADOW DUSK



Fabric B
PTGL43410
DELICATE BALANCE RAW



Fabric C
PTG33406
HENS AND CHICKS



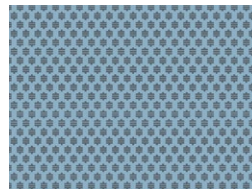
Fabric D
PTG33404
DELICATE BALANCE
GOLDEN



Fabric E
PTG33401
COTTAGE GARDEN ABLOOM



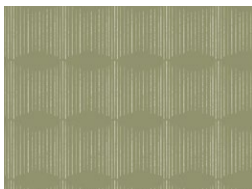
Fabric F
PTG43400
SPRING BOUNTY
HEIRLOOM



Fabric G
PTG43402
BOBBIN SKY BLUE



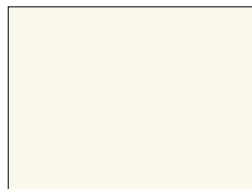
Fabric H
PTG33400
SPRING BOUNTY FRESH



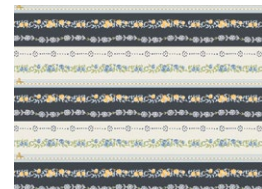
Fabric I
PTG43408
DREAM WEAVER POTAGER



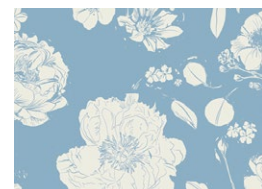
Fabric J
PE496
CRYSTALLINE



Fabric K
PE408
WHITE LINEN



Fabric L
BINPTG33
ORGANIC BOUND



Backing
WIDEPTG33
FLOWERS FOR MOM
PORCELAIN



FINISHED SIZE | 84½" x 84½"

FABRIC REQUIREMENTS

Fabric A	PTG43403	1¼ yd.
Fabric B	PTGL43410	1¾ yd.
Fabric C	PTG33406	¾ yd.
Fabric D	PTG33404	¾ yd.
Fabric E	PTG33401	¾ yd.
Fabric F	PTG43400	⅝ yd.
Fabric G	PTG43402	¾ yd.
Fabric H	PTG33400	¾ yd.
Fabric I	PTG43408	⅝ yd.
Fabric J	PE496	½ yd.
Fabric K	PE408	¾ yd.
Fabric L	BINPTG33	½ yd.

BACKING FABRIC

WIDEPTG33 3⅝ yds (Suggested)

BINDING FABRIC

Fabric **L** BINPTG33 ½ yd. (Included)

CUTTING DIRECTIONS

Please ensure that all fabrics are ironed thoroughly before cutting them. ¼" seam allowances are included. WOF means width of the fabric.

Fabric A

- Cut 48 (Forty eight) 4" squares.
- Cut 16 (Sixteen) 5" x 8¾" rectangles.

Fabric B

- Cut 32 (Thirty two) 5" x 8¾" rectangles.
- Cut 6 (Six) 8¾" squares.

Fabric C

- Cut 4 (Four) 8¾" squares.

Fabric D

- Cut 4 (Four) 8¾" squares.

Fabric E

- Cut 4 (Four) 8¾" squares.

Fabric F

- Cut 8 (Eight) 8¾" squares.

Fabric G

- Cut 4 (Four) 8¾" squares.

Fabric H

- Cut 4 (Four) 8¾" squares.

Fabric I

- Cut 16 (Sixteen) 5" x 8¾" rectangles.

Fabric J

- Cut 2 (Two) 8¾" squares.
- Cut 16 (Sixteen) 4" squares.

Fabric K

- Cut 160 (One hundred and sixty) 4" squares.
- Cut 20 (Twenty) 8¾" squares.

Fabric L

- Cut 9 (Nine) 2½" x WOF strips.

CONSTRUCTION

Sew all rights sides together with 1/4" seam allowance.

Half Rectangle Triangle 1:

- Place 1 (one) 5" x 8 3/4" rectangle from fabric **A** right sides together with 1 (one) 5" x 8 3/4" rectangle from fabric **B**. Mark a diagonal line on the wrong side of fabric **A**, that will connect the top left corner with the bottom right corner of the rectangle. (See figure 1 of diagram 1)
- Rotate fabric **A** rectangle slightly towards the right and match the top left corner of fabric **A** rectangle to the top right corner of fabric **B** rectangle, and the bottom right corner of fabric **A** rectangle with the bottom left corner of fabric **B** rectangle (See figure 2 of diagram 1)
- Using the diagonal line as a guide, sew at 1/4" on either side of the line and cut through the drawn line.
- Trim each half rectangle triangle to 7 1/2" x 4" using the HRT template located at the end of the instructions, make sure to center it and align the diagonal lines of the template with each seams of the half rectangle triangle. (See figure 4 of diagram 1) **Repeat these steps 7 more times.** We will call this combination HRT1 (A-B).
- Note that with this method you will get two HRT1 (A-B) of the same direction.
- You will need one (1) HRT1 (A-B) for row 1 in block 1, and one (1) HRT1 (A-B) for row 2 block 2.

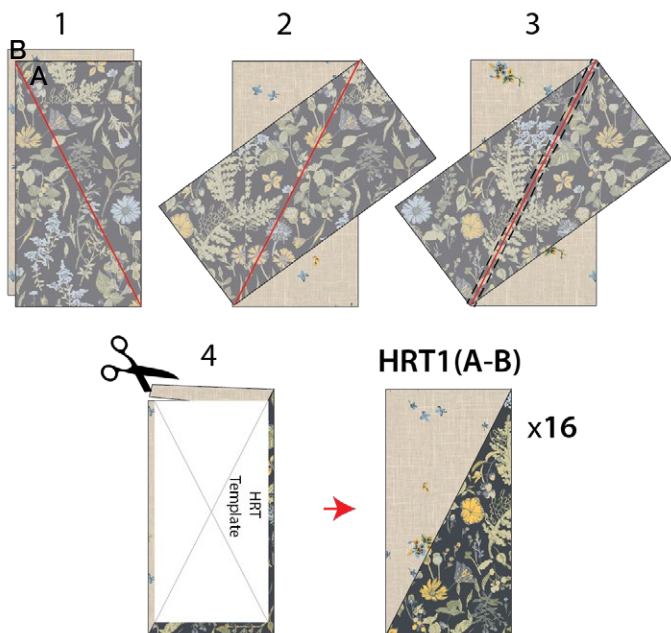


DIAGRAM 1

- Repeat the same steps with 8 (eight) 5" x 8 3/4" rectangles from fabric **B** and 8 (eight) 5" x 8 3/4" rectangles from fabric **I**, placing fabric **B** on top. This will be HRT1 (I-B).
- From HRT1 (I-B) combination you will use one (1) for row 3 in block 2 and one (1) for row 4 in block 1.

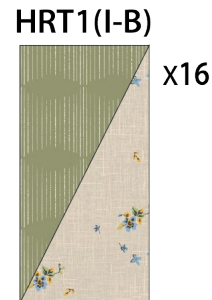


DIAGRAM 2

Half Rectangle Triangle 2:

- Place 1 (one) 5" x 8 3/4" rectangle from fabric **A** right sides together with 1 (one) 5" x 8 3/4" rectangle from fabric **B**. Mark a diagonal line on the wrong side of fabric **A** that will connect the right top corner with the bottom left corner of the rectangle. (See figure 1 of diagram 3)
- Rotate fabric **A** rectangle slightly towards the left and match the right top corner of fabric **A** to the left top corner of fabric **B** rectangle, and the bottom left corner of fabric **A** rectangle with the bottom right corner of fabric **B** rectangle (See Figure 2 of diagram 3)
- Using the diagonal line as a guide, sew at 1/4" on either side of the line and cut through the drawn line.
- Trim each half rectangle triangle to 7 1/2" x 4" using the HRT template located at the end of the instructions, make sure to center and align the diagonal lines of the template with the seams of the half rectangle triangle. (See figure 4) **Repeat these steps 7 more times** We will call this combination HRT2 (A-B)
- Note that this way of placing the top rectangles will give you two HRT in the opposite direction of HRT1(A-B).
- You will need one (1) HRT2 (A-B) for row 2 in block 1 and one (1) HRT2 (A-B) for row 1 block 2.

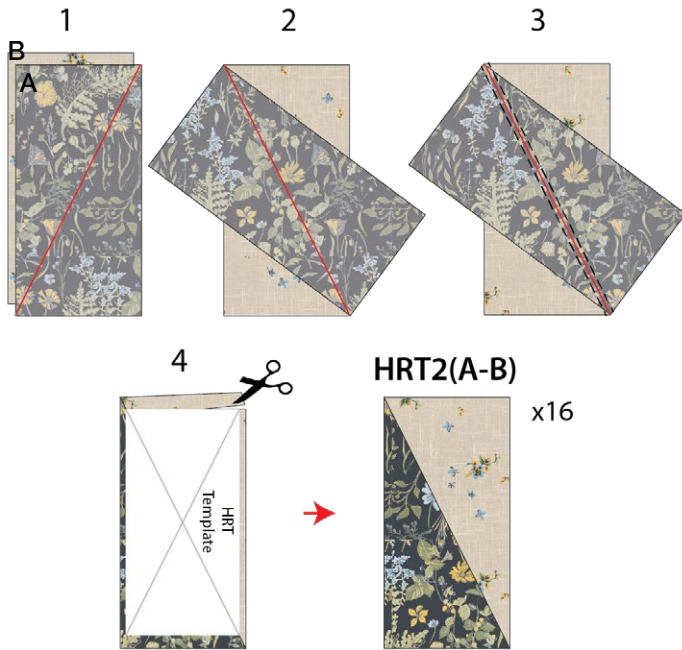


DIAGRAM 3

- Repeat the same steps with 8 (eight) 5" x 8¾" rectangles from fabric **B** and 8 (eight) 5" x 8¾" rectangles from fabric **I**, placing fabric **B** on top.
- From this combination you will use (1) for row 4 in block 2 and (1) for row 3 in block 1.

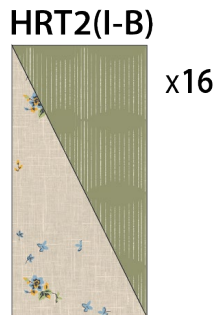


DIAGRAM 4

Half Square Triangle (HST) Construction.

Magic 8 Construction

- Start by placing 1 (one) 8¾" square from fabric **D** and **K** right sides together.

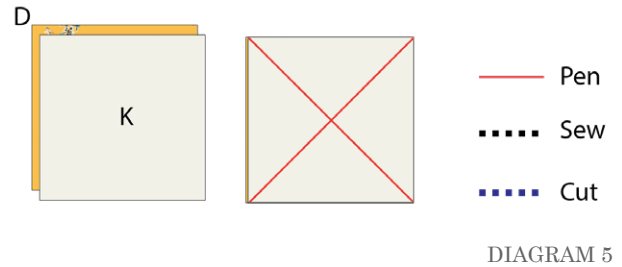


DIAGRAM 5

- Sew a SCANT ¼" seam on each side of each diagonal line and press the sewn square to set the seams. To separate the square into eight units you will be making four cuts: a vertical, a horizontal, and two diagonal. As you make the cuts, don't rotate the fabric or your pieces may shift position. Instead, rotate the mat or walk around it.

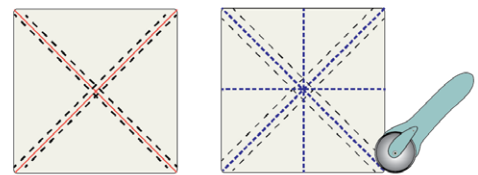


DIAGRAM 6

- Open the blocks outward and lightly press. Be very careful to only press up and down, NOT back and forth so as not to stretch them. Your seam should be pressed (both layers) toward the darker color.
- Trim each half square triangle (HST) to a 4" square.
- Repeat this steps with the remaining 1 (one) 8¾" square from fabric **D** and **K**. You should end up with sixteen (16) **DK** half square triangles (HST) units.

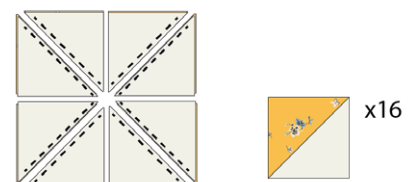


DIAGRAM 7

