

featuring EVE COLLECTION BY BARI J.

X
X
X
X
X
X
X
X
X
X
X
X
X
X
X

GARDEN
of Eden

A pink butterfly with black spots on its wings is positioned to the left of the word 'GARDEN'. To the right of 'GARDEN' is a small branch with red flowers and green leaves.

FREE PATTERN

XX



GARDEN of Eden

QUILT DESIGNED BY AGFstudio



EVE

FABRICS DESIGNED BY BARI J.



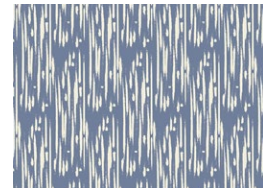
Fabric A
EVE-39806
UNTAMED NATURE SOOTHE



Fabric B
EVE-29800
JARDIN ROBUST



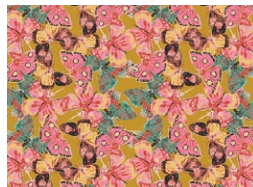
Fabric C
EVE-39800
JARDIN DELICATE



Fabric D
EVE-39803
SHIBORI AZURE



Fabric E (BINDING)
EVE-39804
FLUTTERFLIES-WIND



BACKING
EVE-29804
FLUTTERFLIES-EARTH





FINISHED SIZE | 60" x 60"

FABRIC REQUIREMENTS

Fabric A	EVE-39806	1¼ yd.
Fabric B	EVE-29800	1¼ yd.
Fabric C	EVE-39800	2 yd.
Fabric D	EVE-39803	1¼ yd.
Fabric E	EVE-39804	½ yd.

BACKING FABRIC
EVE-29804 4 yds (Suggested)

BINDING FABRIC
Fabric **E** EVE-39804 (Included)

CUTTING DIRECTIONS

¼" seam allowances are included.
WOF means width of fabric.

- Six (6) 2¼" X WOF from fabric **A**.
- Eight (8) 3" X WOF from fabric **A**.
- Six (6) 2¼" X WOF from fabric **B**.
- Eight (8) 3" X WOF from fabric **B**.
- Twelve (12) 1" X WOF from fabric **C**.
- Fifteen (15) 1¼" X WOF from fabric **C**.
- Six (6) 1⅜" X WOF from fabric **C**.
- Eight (8) 2½" X WOF from fabric **C**.
- Eighteen (18) 3⅞" squares from fabric **C**.
- Six (6) 2¼" X WOF from fabric **D**.
- Eight (8) 3" X WOF from fabric **D**.

CONSTRUCTION

Sew all rights sides together with ¼" seam allowance.

- Start with the top section of the block.
- Bring one (1) 3" x WOF strip from fabrics **A**, **B** & **D**, two (2) 1¼" x WOF from fabric **C**, and one (1) 2½" x WOF from fabric **C**.
- Attach them in the order **ACDCBC** as shown in the diagram below, the 2 ½" x WOF strips from fabric **C** will be the last strip attached next to fabric **B**.



DIAGRAM 1

- Sub-cut into five (5) 7½" rectangles, as shown in the diagram below.



DIAGRAM 2

- Repeat the previous steps until you reach a total of thirty six (36) 7½" rectangles.
- Set aside.



DIAGRAM 3

- Continue with the bottom section of the block.
- Bring one (1) 2¼" X WOF strip from fabrics **A**, **B** & **D**, Two (2) 1" X WOF from fabric **C** and one (1) 1⅜" X WOF from fabric **C**.
- Attach them in the order **ACDCBC** as shown in diagram 4, the 1⅜" x WOF strip from fabric **C** will be the last strip attached next to fabric **B**.



DIAGRAM 4

- Sub-cut using a clear ruler with a 45° angle, starting from right to left cut in a straight line a 45° angle.
- Use your clear ruler to sub-cut and measure 3½" away parallel to the previous cut, until you end up with a total of six (6).



DIAGRAM 5

- Repeat the previous steps until you reach a total of thirty six (36) bottom section of the block.
- Set aside.



DIAGRAM 6

- Now, take all the 3⅞" squares from fabric C and make a diagonal cut using the rotary cutter to all of them.
- You should end up with thirty-six (36) halves.



DIAGRAM 7

- Attach one half to the right corner of the bottom section of the block.
- Refer to diagram 8 for placement, make sure to attach C to A.



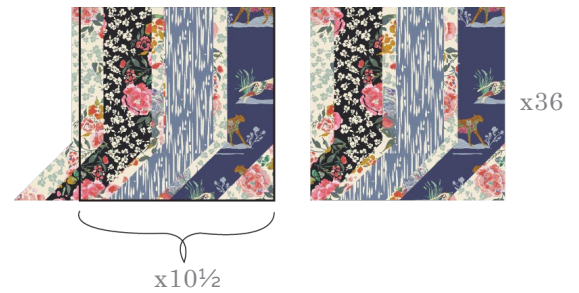
DIAGRAM 8

- Attach the top and bottom of the block as shown in the diagram below, align the bottom strip from left to right, make sure that all the strips are perfectly align with its respective fabric.



DIAGRAM 9

- Trim the square to 10½"

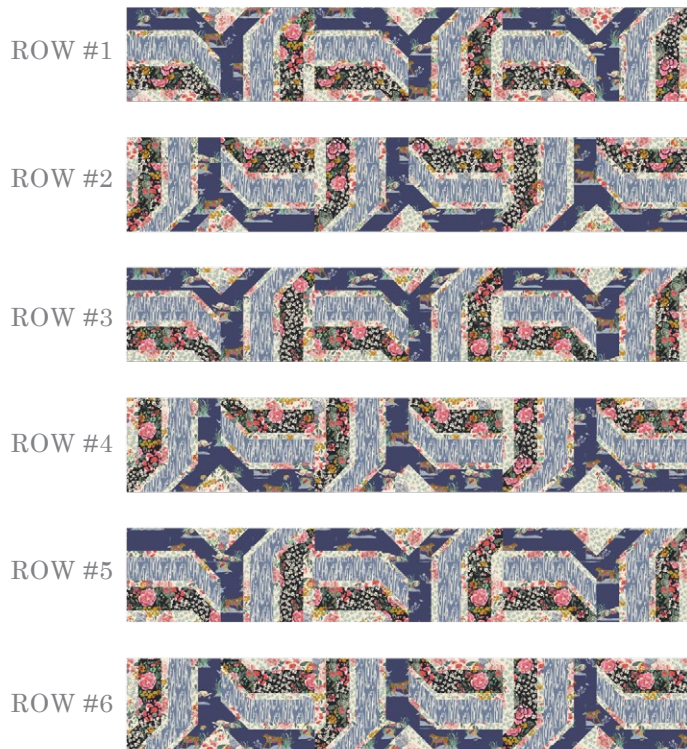


QUILT TOP ASSEMBLY

- This quilt is made of six (6) rows with six (6) blocks each.
- Follow the diagram on the next page or the cover photo to help you in the assembling of each row needed for this quilt top.
- Attach the blocks together to create each row.
- Press seams open as you sew.

QUILT ASSEMBLY

Sew rights sides together.



- Attach the rows together.



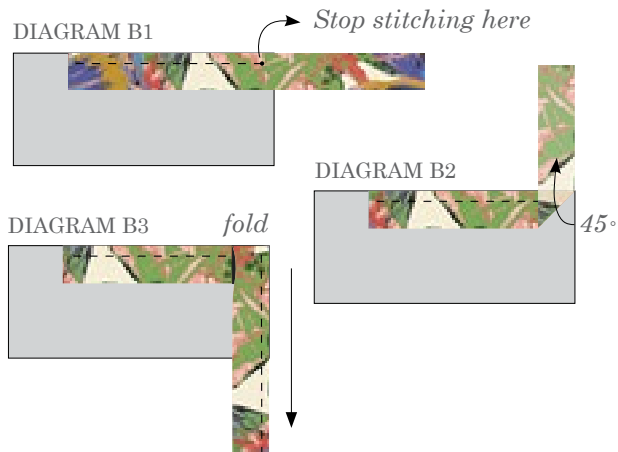
- Place BACKING FABRIC on a large surface wrong side up. Stretch it with masking tape against that surface.
- Place BATTING on top of backing fabric.
- Place TOP on top of the batting with right side facing up. Smooth away wrinkles using your hands.
- Pin all layers together and baste with basting thread, using long stitches. You can also use safety pins to join the layers.
- Machine or hand quilt starting at the center and working towards the corners. Remember that quilting motifs are a matter of personal preference. Have fun choosing yours!
- After you finished, trim excess of any fabric or batting, squaring the quilt to proceed to bind it.

BINDING

Sew rights sides together.

- Cut enough strips $2\frac{1}{2}$ " wide by the width of the fabric **E** to make a final strip 250" long. Start sewing the binding strip in the middle of one of the sides of the quilt, placing the strip right side down and leaving an approximated 5" tail. Sew with $\frac{1}{4}$ " seam allowance (using straight stitch), aligning the strip's raw edge with the quilt top's raw edge.
- Stop stitching $\frac{1}{4}$ " before the edge of the quilt (DIAGRAM B 1). Clip the threads. Remove the quilt from under the machine presser foot. Fold the strip in a motion of 45° and upward, pressing with your fingers (DIAGRAM B2). Hold this fold with your finger, bring the strip down in line with the next edge, making a horizontal fold that aligns with the top edge of the quilt (DIAGRAM B3). Start sewing at $\frac{1}{4}$ " of the border, stitching all the layers. Do the same in the four corners of the quilt.

- Stop stitching before you reach the last 5 or 6 inches. Cut the threads and remove the quilt from under the machine presser foot. Lay the loose ends of the binding flat along the quilt edge, folding the ends back on themselves where they meet. Press them together to form a crease. Using this crease as the stitching line, sew the two open ends of the binding with right sides together (you can help yourself marking with a pencil if the crease is difficult to see).
- Trim seam to $\frac{1}{4}$ " and press open. Complete the sewing. Turn binding to back of the quilt, turn raw edge inside and stitch by hand using blind stitch.



- If you are using our 2.5 edition (binding fabric), click or scan this QR code to see a tutorial on how to use this specialty fabric.



XX

*Congratulations
& enjoy*

XX



artgalleryfabrics.com

NOTE: While all possible care has been taken to ensure the accuracy of this pattern, We are not responsible for printing errors or the way in which individual work varies.

Please read instructions carefully before starting the construction of this quilt. If desired, wash and iron your fabrics before starting to cut.

© 2025 Courtesy of Art Gallery Quilts LLC. All Rights Reserved.