

featuring MAYFAIR COLLECTION BY AMY SINIBALDI

x
x
x
x
x
x
x
x
x
x
x
x
x
x
x

FLOWER BREEZE



ANGLES

A DIVISION OF AGF

FREE PATTERN

xxxxxxxxxxxxxxxxxxxxxxxxxxxxxxxx

FLOWER BREEZE



MAYFAIR

FABRICS DESIGNED BY AMY SINIBALDI



FABRIC A
MAF-79200
BLAKE



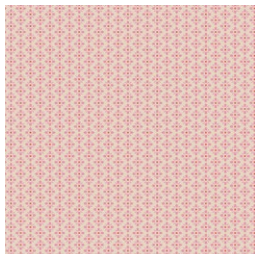
FABRIC B
PE-492
WEATHERED BRICK



FABRIC C
MAF-79202
PROMENADE PLUM



FABRIC D
DSE-711
BORGOGNA



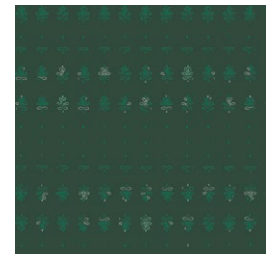
FABRIC E
MAF-79201
ROYAL ARCADE



FABRIC F
MAF-79207
CHELSEA



FABRIC G
PE-419
LIGHT GREY



FABRIC H
MAF-79205
SHEPHERD MARKET



FABRIC I
PE-463
ZAMBIA STONE



FABRIC J
DSE-700
CLOUD



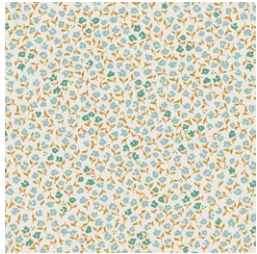
FABRIC K
MAF-79204
BROOKS MEWS



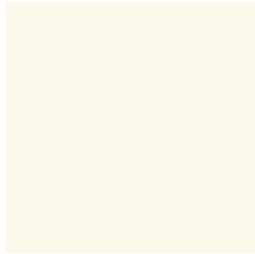
FABRIC L
PE-418
TILE BLUE



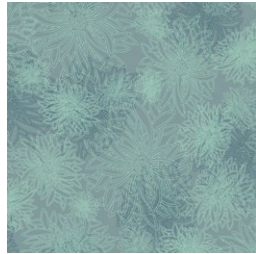
ADDITIONAL BLENDERS FOR THIS PROJECT



FABRIC M
MAF-79206
PROMENADE MINT



FABRIC N
PE-408
WHITE LINEN



FABRIC O
FE-529
AQUARIUM



FABRIC P
MAF-79203
COVENT GARDEN



FABRIC Q
PE-484
LEMON TART



FABRIC R
MAF-79211
HYDE PARK FRESH



FABRIC S
DSE-706
SUNGLOW



FABRIC T
DEN-S-2003
AFTERNOON SAIL

FLOWER BREEZE

FINISHED SIZE | 10½" x 10

FABRIC REQUIREMENTS

BLOCK 1

Fabric A	MAF-79200	F8.
Fabric B	PE-492	F8.
Fabric C	MAF-79202	F8.
Fabric D	DSE-711	F8.
Fabric E	MAF-79201	F8.

BLOCK 2

Fabric A	MAF-79207	F8.
Fabric B	PE-419	F8.
Fabric C	MAF-79205	F8.
Fabric D	PE-463	F8.
Fabric E	DSE-700	F8.

BLOCK 3

Fabric A	MAF-79204	F8.
Fabric B	PE-418	F8.
Fabric C	MAF-79206	F8.
Fabric D	PE-408	F8.
Fabric E	FE-529	F8.

BLOCK 4

Fabric A	MAF-79203	F8.
Fabric B	PE-484	F8.
Fabric C	MAF-79211	F8.
Fabric D	DSE-706	F8.
Fabric E	DEN-S-2003	F8.

CUTTING DIRECTIONS

¼" seam allowances are included.
WOF means width of fabric.

Start by choosing the block you want to make to use its corresponding fabric combinations.

- One (1) 8" x 8" square from Fabric **A**
- Four (4) 3½" x 3½" square from Fabric **B**
- One (1) 5" x 5" square from Fabric **B, C**
- Four (4) 2" x 2" square from Fabric **C, D, E**
- Two (2) 5" x 5" square from Fabric **E**

CONSTRUCTION

Sew all rights sides together with ¼" seam allowance.

- Pair Fabric **B** 3½" square and Fabric **C** 2" square, right sides facing aligned on the bottom right corner side of Fabric **B** square.
- Stitch at the diagonal and trim excess fabric.
- Repeat three more times
- Place the assembled units face together on each corner of 1 (one) 8" square from fabric Fabric **A**.
- Sew at the diagonal and trim excess fabric.
- Make 1 (one) Section 1.

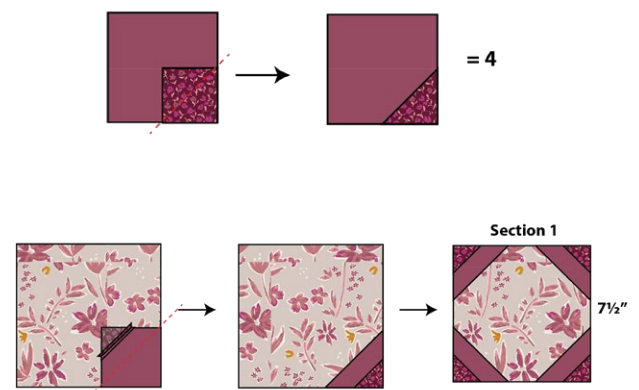


DIAGRAM 1

- Follow the Magic 8 HST technique in order to assemble the following pieces using 5" x 5" fabric squares below.
- Trim each block to a 2" x 2".

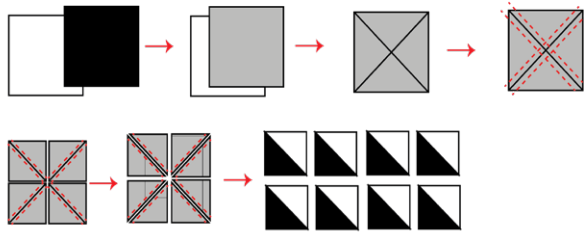


DIAGRAM 2

- Pair the following HST units to create Set 1 and Set 2.

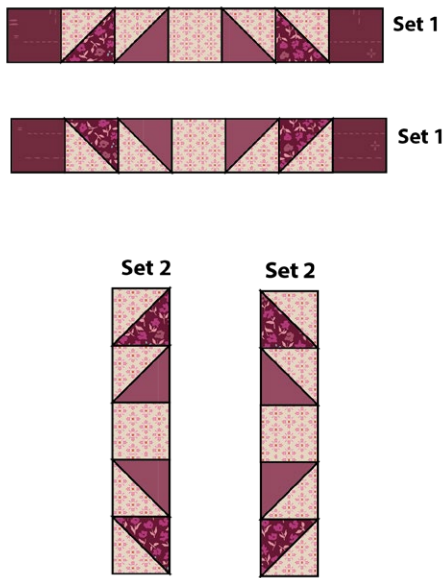


DIAGRAM 3

- Sew 1 (one) Section 1 in between 2 (two) Set 2. Make sure to place the Sets following the diagram orientation.



DIAGRAM 4

XXXXXXXXXXXXXXXXXXXXXXXXXXXXXXXXXXXXXXXXXXXXXXXXXXXXXXXXXXXX

- In the same manner, sew 1 (one) previously sewn piece in between 2 (two) Set 1.
- Make sure to follow the diagram to place the sets with the correct orientation.

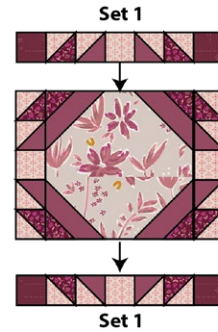


DIAGRAM 5

- The final Block should measure 10½" x 10½".



DIAGRAM 6

- Quilt as desired.
- Repeat the same instructions for the rest of the blocks.



DIAGRAM 7



artgalleryfabrics.com

NOTE: While all possible care has been taken to ensure the accuracy of this pattern, We are not responsible for printing errors or the way in which individual work varies.
Please read instructions carefully before starting the construction of this quilt. If desired, wash and iron your fabrics before starting to cut.

© 2025 Courtesy of Art Gallery Quilts LLC. All Rights Reserved.