

Buds & Petals

FINISHED SIZE | 77½" x 85½"

Please read all instructions thoroughly before beginning.

FABRIC REQUIREMENTS

Fabric A	PLE86106	½ yd.
Fabric B	DSE719	⅝ yd.
Fabric C	PLE86109	½ yd.
Fabric D	PLE96109	⅝ yd.
Fabric E	PE559	⅝ yd.
Fabric F	PLE86107	½ yd.
Fabric G	PLE96105	⅝ yd.
Fabric H	PE419	⅝ yd.
Fabric I	PLE86101	½ yd.
Fabric J	PLE86100	½ yd.
Fabric K	PE470	⅝ yd.
Fabric L	PLE96101	⅝ yd.
Fabric M	PLE96106	½ yd.
Fabric N	PLE86103	½ yd.
Fabric O	DSE727	5½ yd.
Fabric P	BINPLE86	⅝ yd.

BACKING FABRIC

PLE96108 5½ yds (*Suggested*)

BINDING FABRIC

Fabric **P** BINPLE86 ⅝ yd (*Included*)

CUTTING DIRECTIONS

Please ensure that all fabrics are ironed thoroughly before cutting them. ¼" seam allowances are included. WOF means width of the fabric.

Fabric A

- Cut 2 (two) 3⅝" x WOF strips, then,
 - Sub-cut into 12 (twelve) template 2.
- Cut 1 (one) 6½" x WOF strip, then;
 - Sub-cut into 3 (three) 6½" squares.

Fabric B:

- Cut 2 (two) 3⅝" x WOF strips, then;
 - Sub-cut into 12 (twelve) template 2.
- Cut 3 (three) 2¼" x WOF strips, then
 - Sub-cut into 24 (twenty four) template 1.
- Cut 1 (one) 6½" x WOF strip, then
 - Sub-cut into 3 (three) 6½" squares.

Fabric C:

- Cut 2 (two) 3⅝" x WOF strips, then;
 - Sub-cut into 12 (twelve) template 2.
- Cut 1 (one) 6½" x WOF strip, then
 - Sub-cut into 3 (three) 6½" squares.

Fabric D:

- Cut 2 (two) 3⅝" x WOF strips, then;
 - Sub-cut into 12 (twelve) template 2.
- Cut 3 (three) 2¼" x WOF strips, then;
 - Sub-cut into 24 (twenty four) template 1.
- Cut 1 (one) 6½" x WOF strip, then;
 - Sub-cut into 3 (three) 6½" squares.

Fabric E:

- Cut 2 (two) 3⅝" x WOF strips, then;
 - Sub-cut into 12 (twelve) template 2.
- Cut 3 (three) 2¼" x WOF strips, then;
 - Sub-cut into 24 (twenty four) template 1.
- Cut 1 (one) 6½" x WOF strip, then;
 - Sub-cut into 3 (three) 6½" squares.

CONSTRUCTION

Sew all rights sides together with 1/4" seam allowance.

- Pair two template 1 from fabric **B** and make a small cut in the center of 1 (one) of the templates.

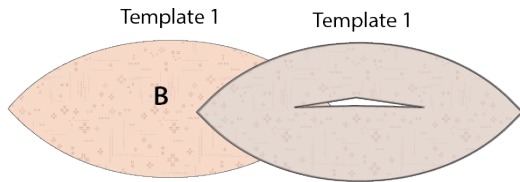


DIAGRAM 1

- Align them face to face and join them stitching at 1/4" from the edge.

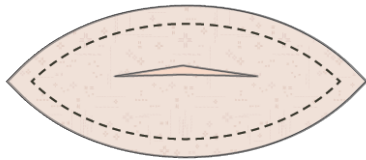


DIAGRAM 2

- Trim the seam allowance of the points of each petal. Make sure not to cut the stitch line.

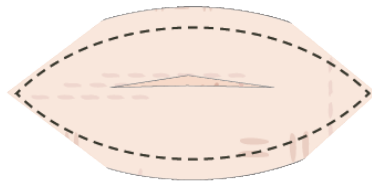


DIAGRAM 3

- With the help of a tool, turn your piece toward the right side through the cut.
- Take a template 4 from Stem-A-Seam and apply it to the center of the wrong side of the petal.

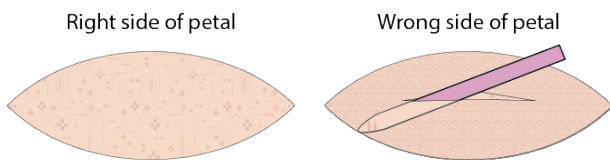


DIAGRAM 4

- Repeat the same steps with all template 1 from fabrics **D, E, G, K, L** and **O**.

- Sew 1 (one) template 2 from fabrics **A** and 1 (one) template 3 from fabric **O**.
- Make a total of 12 (twelve) Unit 1.

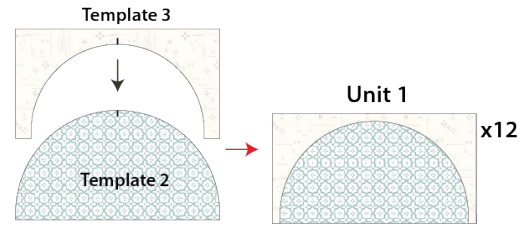


DIAGRAM 5

- Repeat the previous step with 12 (twelve) template 2 from fabrics **B** through **N** and 156 (one hundred and fifty six) template 3 from fabric **O**.
- You should have a 12 (twelve) units per fabric combination. See diagram below for reference.

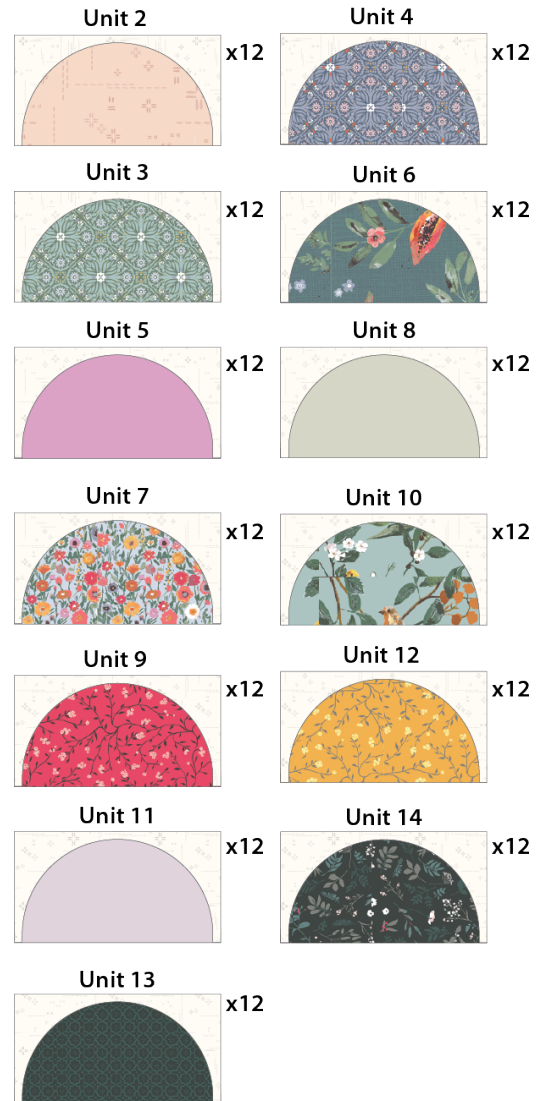


DIAGRAM 6

- Sew 2 (two) unit 1 and 1 (one) $6\frac{1}{2}$ " squares from fabric **A**. See diagram below for reference.
- Make total of 3 (three) section 1.

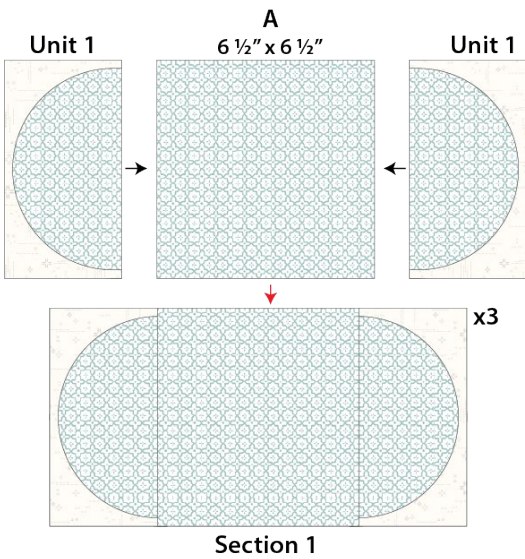


DIAGRAM 7

- Sew 2 (two) $3\frac{1}{2}$ " squares from fabric **O** and 1 (one) unit 1.
- Make a total of 6 (six) section 2.

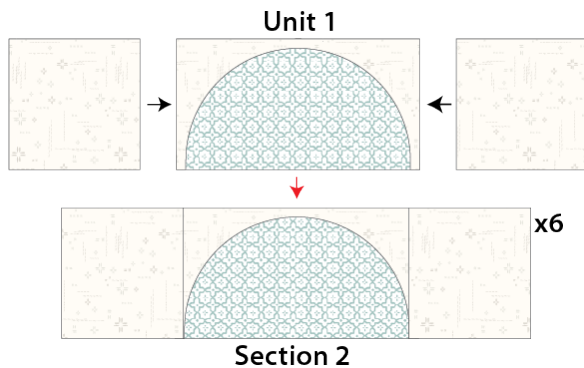


DIAGRAM 8

- Join 1 (one) section 1 and 2 (two) section 2.
- Make a total of 3 (three) block 1.

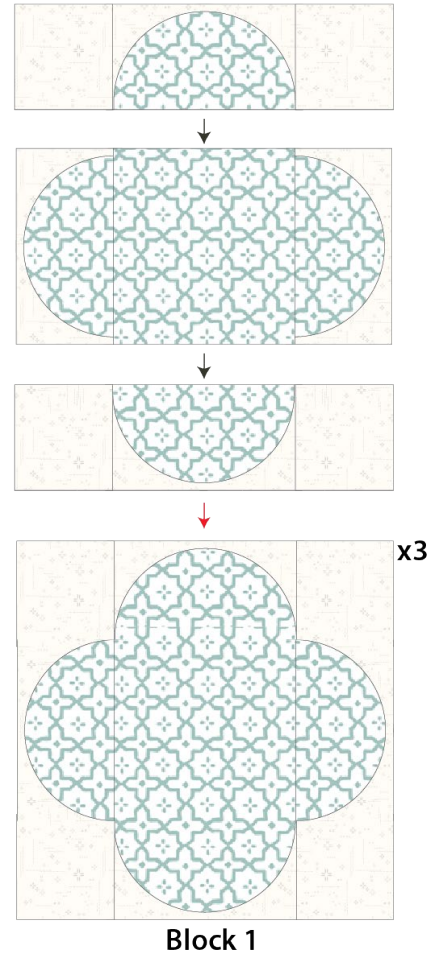


DIAGRAM 9

- Press block 1 on both diagonal sides to get crease lines.
- The diagonal crease lines will be your guide to place, fuse, and apply the petals.

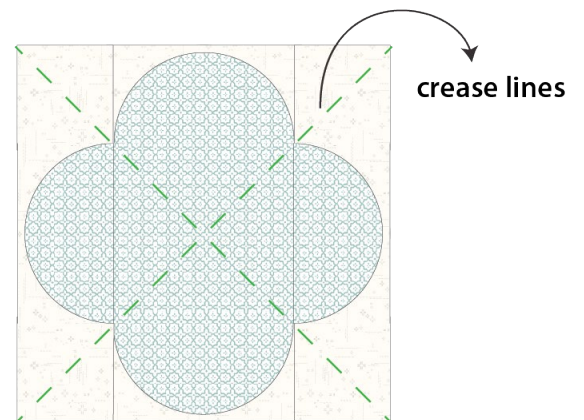


DIAGRAM 10



DIAGRAM 26

QUILT ASSEMBLY

Sew rights sides together.

- Place BACKING FABRIC on a large surface wrong side up. Stretch it with masking tape against that surface.
- Place BATTING on top of backing fabric.
- Place TOP on top of the batting with right side facing up. Smooth away wrinkles using your hands.
- Pin all layers together and baste with basting thread, using long stitches. You can also use safety pins to join the layers.
- Machine or hand quilt starting at the center and working towards the corners. Remember that quilting motifs are a matter of personal preference. Have fun choosing yours!
- After you finished, trim excess of any fabric or batting, squaring the quilt to proceed to bind it.

BINDING

Sew rights sides together.

- Cut enough strips $2\frac{1}{2}$ " wide by the width of the fabric **P** to make a final strip 336" long. Start sewing the binding strip in the middle of one of the sides of the quilt, placing the strip right side down and leaving an approximated 5" tail. Sew with $\frac{1}{4}$ " seam allowance (using straight stitch), aligning the strip's raw edge with the quilt top's raw edge.

- Stop stitching $\frac{1}{4}$ " before the edge of the quilt (DIAGRAM B 1). Clip the threads. Remove the quilt from under the machine presser foot. Fold the strip in a motion of 45° and upward, pressing with your fingers (DIAGRAM B2). Hold this fold with your finger, bring the strip down in line with the next edge, making a horizontal fold that aligns with the top edge of the quilt (DIAGRAM B3). Start sewing at $\frac{1}{4}$ " of the border, stitching all the layers. Do the same in the four corners of the quilt.
- Stop stitching before you reach the last 5 or 6 inches. Cut the threads and remove the quilt from under the machine presser foot. Lay the loose ends of the binding flat along the quilt edge, folding the ends back on themselves where they meet. Press them together to form a crease. Using this crease as the stitching line, sew the two open ends of the binding with right sides together (you can help yourself marking with a pencil if the crease is difficult to see).
- Trim seam to $\frac{1}{4}$ " and press open. Complete the sewing. Turn binding to back of the quilt, turn raw edge inside and stitch by hand using blind stitch.
- If you are using our 2.5 edition (binding fabric), click or scan this QR code to see a tutorial on how to use this specialty fabric.

