





# ECLIPSE

QUILT DESIGNED BY AGFstudio

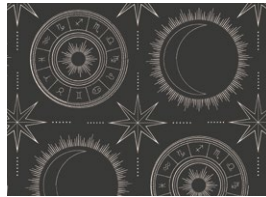


## luna & laurel

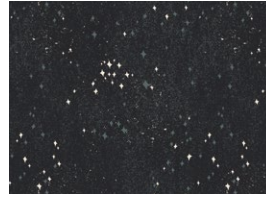
FABRICS DESIGNED BY AGF STUDIO



LUL-28502  
VISIONS WOODBLOCK



LUL-28506  
ESOTERIC ALIGNMENT



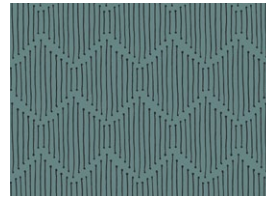
LUL-28510  
STARDUST



LUL-28503  
PERFECTLY IMPERFECT



LUL-28505  
EYE SEE YOU DAY



LUL-28507  
MINDFUL PATHS



LUL-28504  
SOLASTA SPECKS







FINISHED SIZE | 77½" x 70½"

## FABRIC REQUIREMENTS

Fabric <b>A</b>	LUL-28502	⅞ yd.
Fabric <b>B</b>	LUL-28506	⅞ yd.
Fabric <b>C</b>	LUL-28510	1 ¾ yd.
Fabric <b>D</b>	LUL-28503	⅝ yd.
Fabric <b>E</b>	LUL-28505	½ yd.
Fabric <b>F</b>	LUL-28507	⅞ yd.
Fabric <b>G</b>	LUL-28504	⅝ yd.
Fabric <b>H</b>	PE-452	½ yd.
Fabric <b>I</b>	PE-508	½ yd.
Fabric <b>J</b>	PE-436	¼ yd.
Fabric <b>K</b>	PE-432	1 ⅜ yd.

### BACKING FABRIC

LUL-28510 5yds (*Suggested*)

### BINDING FABRIC

Fabric **F** LUL-28507 (*Included*)

## CUTTING DIRECTIONS

¼" seam allowances are included.

### Cutting direction for directional fabric

- One (1) template 1a from fabric **A** (follow diagram 1)
- One (1) template 1b from fabric **A** (follow diagram 1)
- Seven (7) template 2a from fabric **A** (follow diagram 1)
- Eight (8) template 2b from fabric **A** (follow diagram 1)
- One (1) template 1a from fabric **D** (follow diagram 2)
- One (1) template 1b from fabric **D** (follow diagram 2)
- Five (5) template 2a from fabric **D** (follow diagram 2)
- Four (4) template 2b from fabric **D** (follow diagram 2)
- One (1) template 1a from fabric **F** (follow diagram 3)
- One (1) template 1b from fabric **F** (follow diagram 3)
- Four (4) template 2a from fabric **F** (follow diagram 3)
- Four (4) template 2b from fabric **F** (follow diagram 3)

### Cutting direction for non-directional fabric

- Two (2) template 1a from fabric **B**
- Two (2) template 1b from fabric **B**
- Seven (7) template 2a from fabric **B**
- Six (6) template 2b from fabric **B**
- Seventeen (17) template 1a from fabric **C**
- Eighteen (18) template 1b from fabric **C**
- Three (3) template 2a from fabric **C**
- One (1) template 2b from fabric **C**
- Two (2) 7½" squares from fabric **C**
- Six (6) 14½" x 7½" rectangles from fabric **C**

- Three (3) template 2a from fabric E
- Three (3) template 2b from fabric E
- One (1) template 1a from fabric G
- Two (2) template 1b from fabric G
- Four (4) template 2a from fabric G
- Four (4) template 2b from fabric G
- Three (3) template 2a from fabric H
- Six (6) template 2b from fabric H
- One (1) template 1a from Fabric I
- One (1) template 1b from Fabric I
- Four (4) template 2a from fabric I
- Three (3) template 2b from fabric I
- Two (2) template 2a from fabric J
- One (1) template 2b from fabric J
- Nineteen (19) template 1a from Fabric K
- Fifteen (15) template 1b from fabric K
- One (1) template 2a from fabric K
- One (1) template 2b from fabric K
- Six (6) 14½" x 7½" rectangles from fabric K

Use diagram 1-3 as a guide to cut your templates since they are directional fabrics.

Rotate your templates to cut your pieces according to your diagrams.

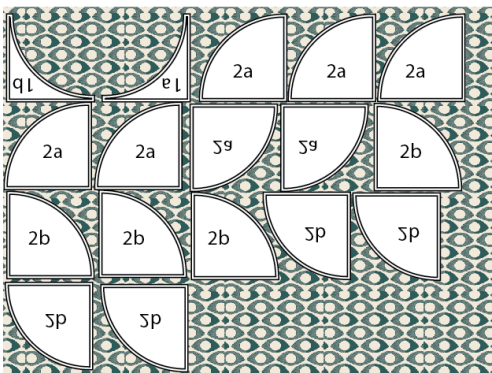


DIAGRAM 1

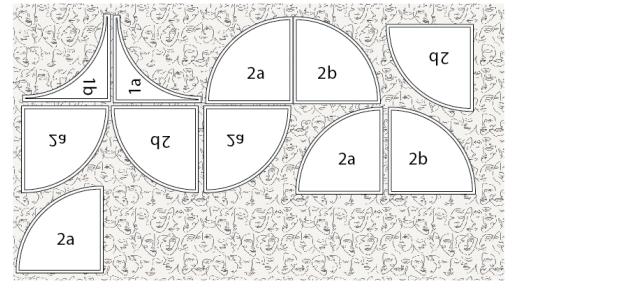


DIAGRAM 2

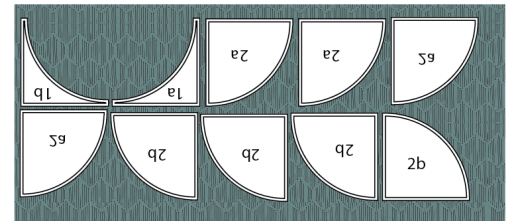


DIAGRAM 3

Use the diagram below as a guide for cutting the templates on your non-directional fabrics.

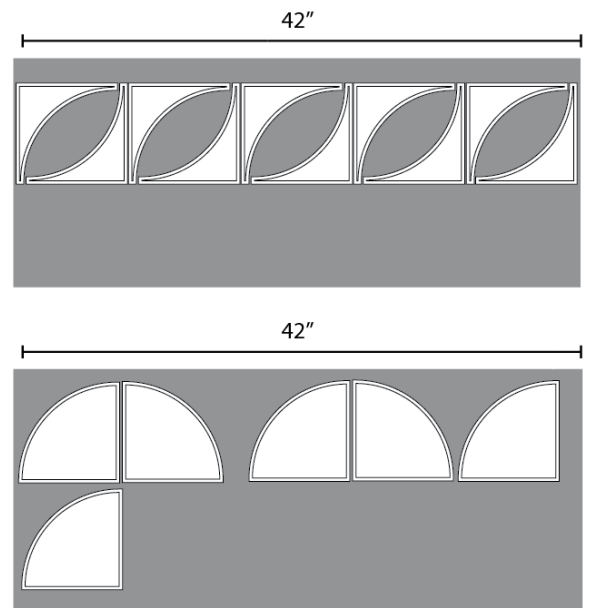


DIAGRAM 4





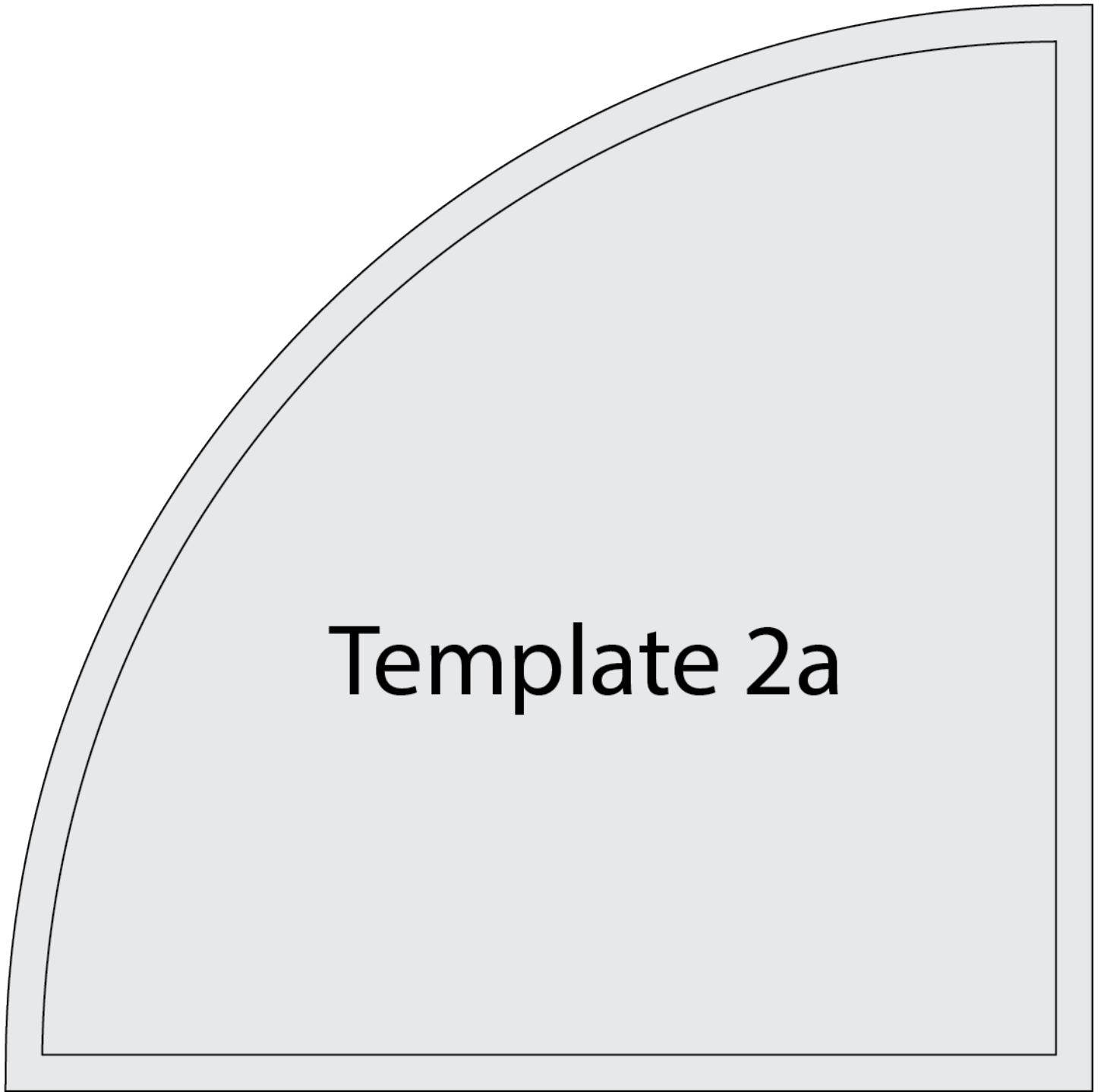






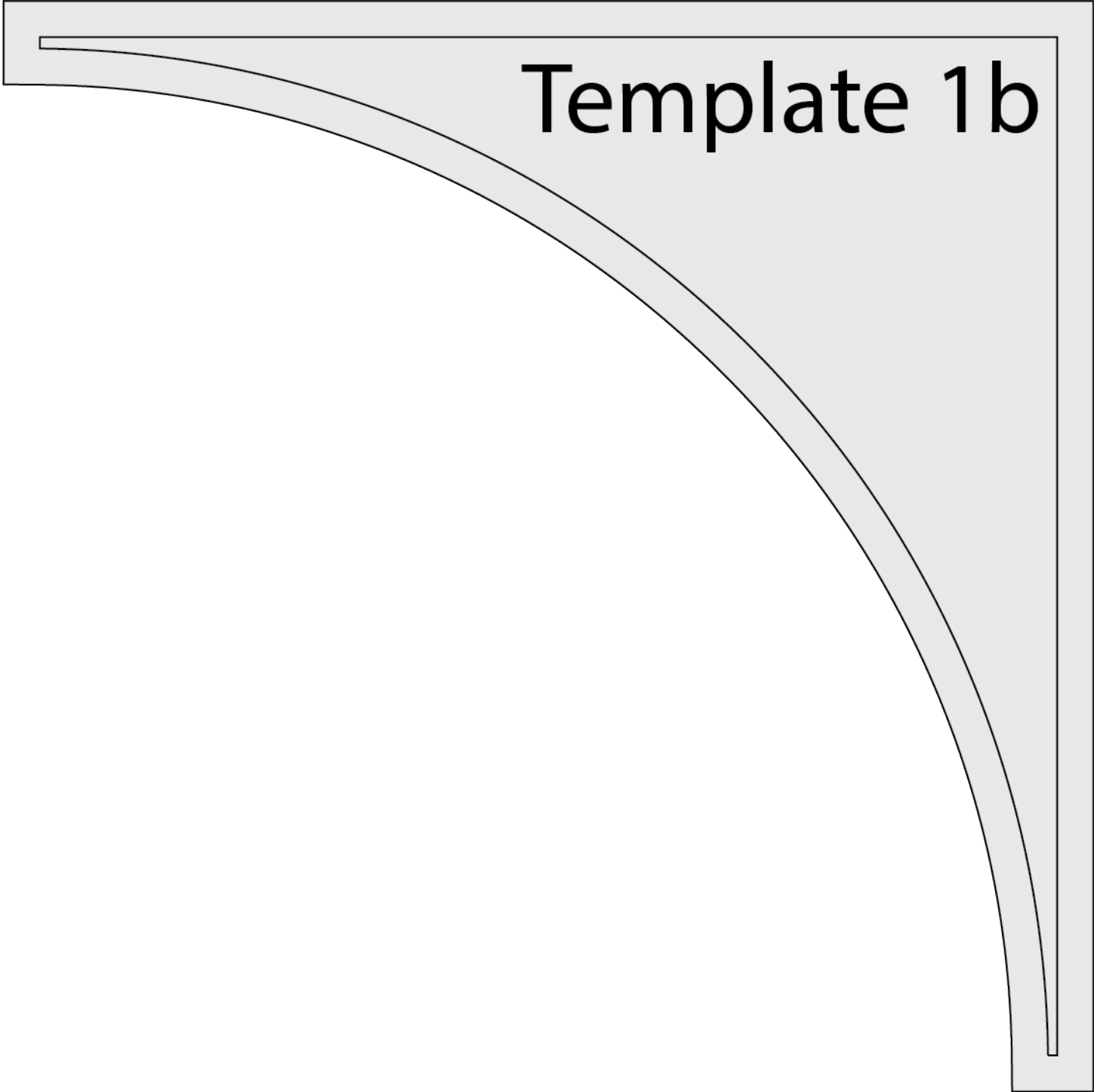






Template 2a





Template 1b

