

p^{▲▲▲▲▲}enum_▼

× × × × ×



*fabric
wonders*

FQ

FRIENDLY

FREE PATTERN



penum

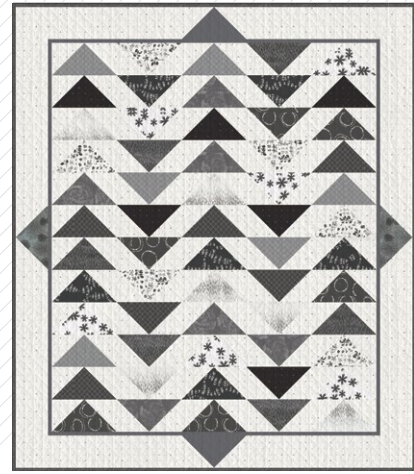
XXXXX

QUILT DESIGNED BY AGFstudio

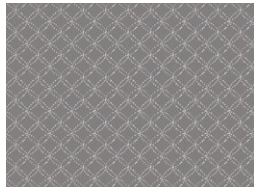
INK PERFECT

CARBON EDITION

FABRICS DESIGNED BY AGF STUDIO



Fabric A
PE430
MOONSTONE



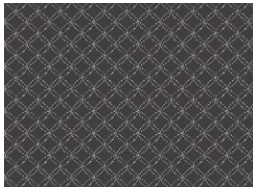
Fabric B
INK21906
INTERWOVEN ASH



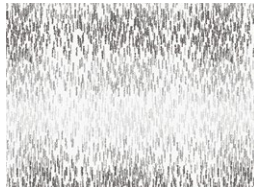
Fabric C
INK21908
ROUND MARKINGS CARBON



Fabric D
INKL21913
FERNLIKE IMPRESSIONS



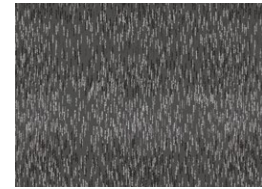
Fabric E
INKL21909
INTERWOVEN CHAR



Fabric F
INK21905
LINEAR STORM ASH



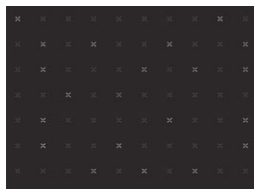
Fabric G
INK21901
BOTANICAL IMPRINT



Fabric H
INK21907
LINEAR STORM CHAR



Fabric I
INK21900
INKED PETALS CARBON



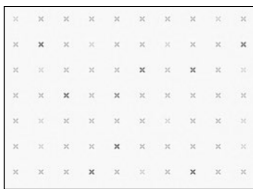
Fabric J
INKL21912
CROSSED GRID CHAR



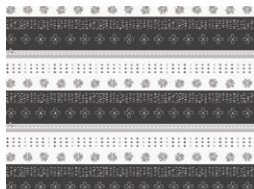
Fabric K
INK21910
ECHOES OF CARBON



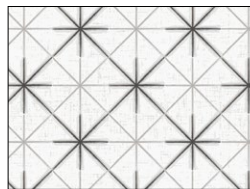
Fabric L
FE507
STORMY SEA



Fabric M
INKL21903
CROSSED GRID ASH



Fabric N- (Binding)
BININK21
INK BOUND



Backing
INK21904
ITAJIME BLOCKS CARBON





× × × × ×

FINISHED SIZE | 56½" x 65½"

Please read all instructions thoroughly before beginning.

A fat quarter width of fabric (WOF) is typically 22"-wide.

Cutting instructions are based on 22"-wide and 42"-wide fabrics.

FABRIC REQUIREMENTS

Fabric A	PE430	FQ.
Fabric B	INK21906	FQ.
Fabric C	INK21908	FQ.
Fabric D	INKL21913	FQ.
Fabric E	INK21909	FQ.
Fabric F	INK21905	FQ.
Fabric G	INK21901	FQ.
Fabric H	INK21907	FQ.
Fabric I	INK21900	FQ.
Fabric J	INKL21912	FQ.
Fabric K	INK21910	FQ.
Fabric L	FE507	FQ.
Fabric M	INK21903	3½ yd.
Fabric N	BININK21	½ yd.

BACKING FABRIC

INK21904 4¼ yds (Suggested)

BINDING FABRIC

Fabric **N** BININK21 ½ yd. (Included)

Our Fat Quarter measurement is 22" x 18"

CUTTING DIRECTIONS

Please ensure that all fabrics are ironed thoroughly before cutting them. ¼" seam allowances are included. WOF means width of the fabric.

Fabric A

- Cut 1 (one) 5" x WOF strip, then;
Sub-cut into 2 (two) 5" x 9½" rectangles.
- Cut 11 (eleven) 1" x WOF strips, then;
Sub-cut into 11 (eleven) 1" x 21" strips.

Fabric B through K

- Cut 3 (three) 5" x WOF strips, then;
Sub-cut into 6 (six) 5" x 9½" rectangles.

Fabric L

- Cut 1 (one) 5" x WOF strips, then;
Sub-cut into 2 (two) 5" x 9½" rectangles.

Fabric M

- Cut 24 (twenty four) 5" x WOF strips, then;
Sub-cut 8 (eight) strips into
8 (eight) 5" x 23½" strips.
and 16 (sixteen) strips into 128
(one hundred and twenty eight) 5"
squares.

Fabric N

- Cut 7 (seven) 2½" x WOF strips. (Binding).

CONSTRUCTION

Sew all rights sides together with 1/4" seam allowance.

Flying Geese Construction.

- Place 1 (one) 5" square from fabric **M** on the right edge of 1 (one) 5" x 9 1/2" rectangle from fabric **A** and mark a diagonal line from the top left to the bottom right corner of the square. Sew on the drawn line and trim 1/4" away from the seam and press.

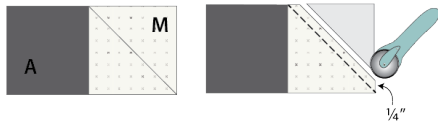


DIAGRAM 1

- Place another 5" square from fabric **M** on the left edge of the same piece, mark a diagonal line from the top right to the bottom left corner of the square and sew through the line.
- Trim 1/4" away from the seam and press.
- Each flying geese unit should measure 5" x 9 1/2".

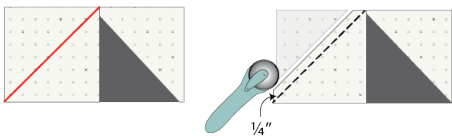


DIAGRAM 2

- Make a total of 2 (two) **MAM** flying geese combination.

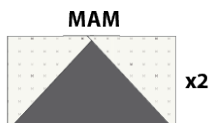


DIAGRAM 3

- Repeat the Flying Geese Construction with the following fabric combinations: **L-B-C-D-E-F-G-H-I-J** and **K**.

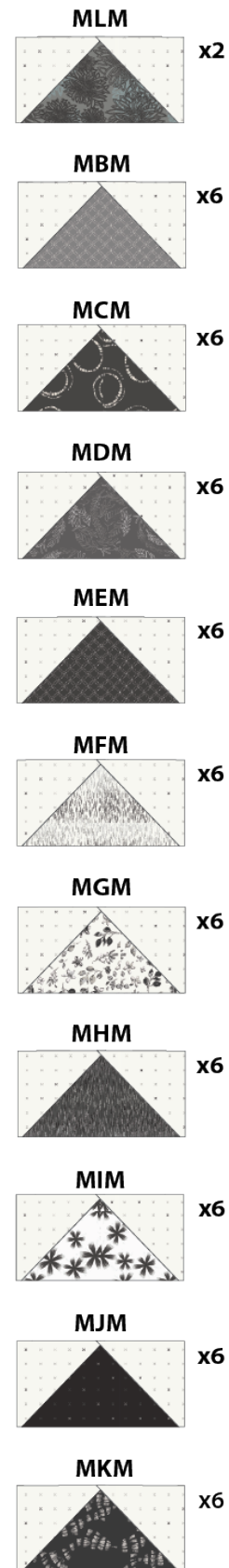


DIAGRAM 4

• Sew all flying geese units into 12 (twelve) rows of 5 (five) units each, then sew rows together.

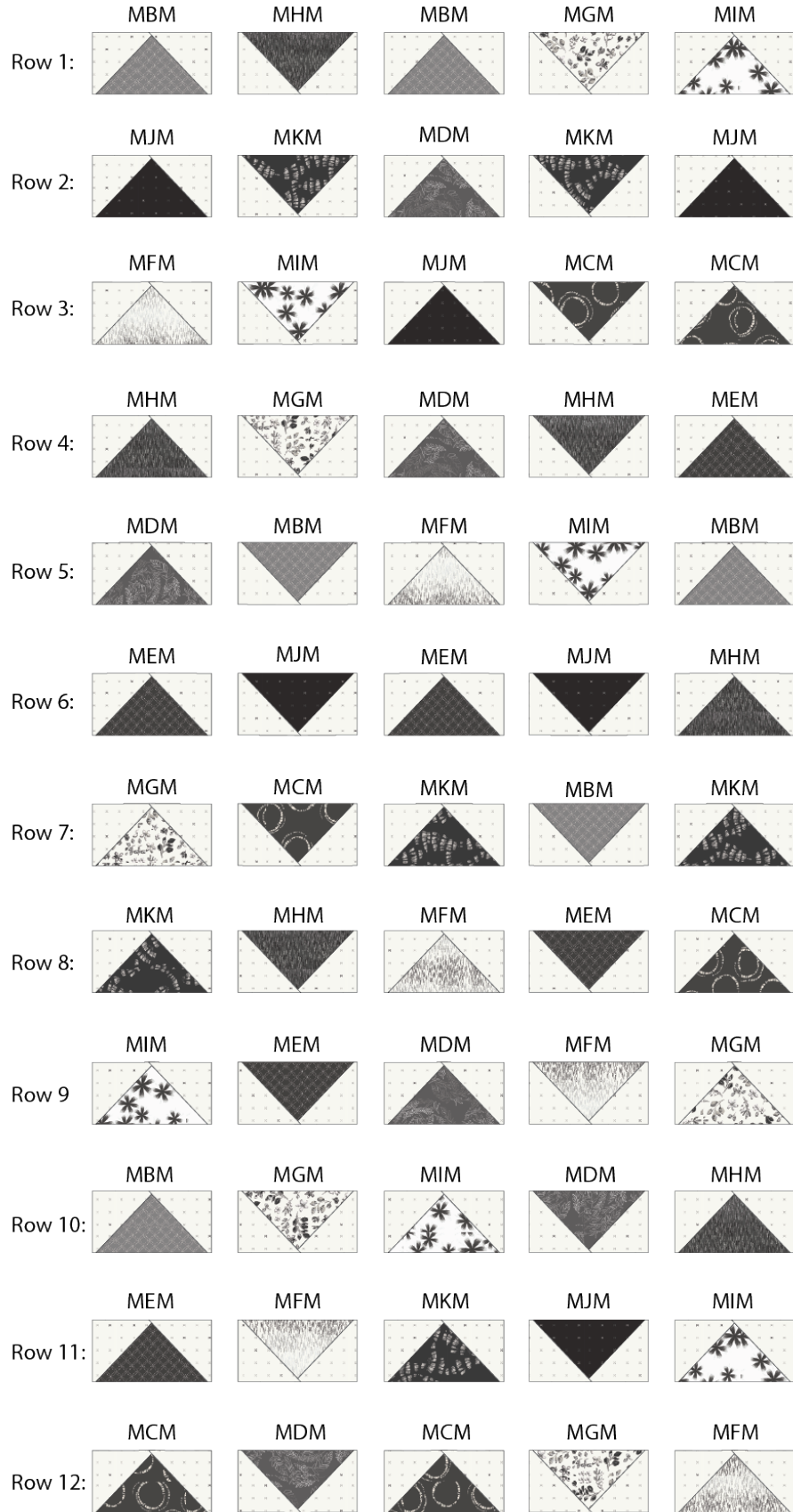


DIAGRAM 5

- Join all 10 (ten) 1" x 21" fabric **A** strips, short ends together to make one long strip.
- Measure the length of each side of the quilt. Average those numbers and cut 2 border strip to that measurement or to 54½" long if quilt top is true to size. Sew to the sides of the quilt.

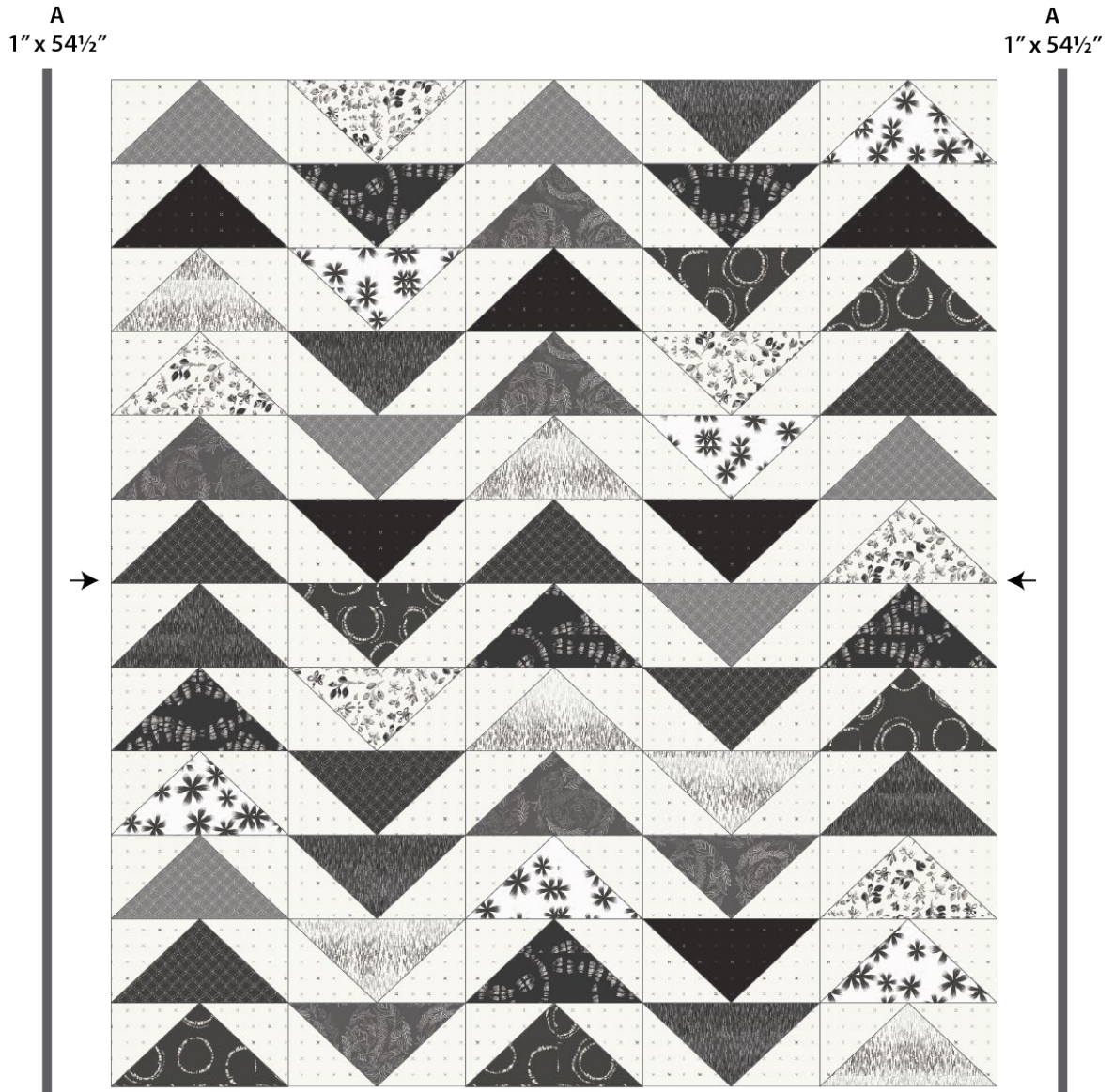


DIAGRAM 6

- Measure the top and bottom of the quilt. Average those numbers and cut 2 border strip to that measurement or to 46½" long if quilt top is true to size. Sew to the top and bottom of the quilt.

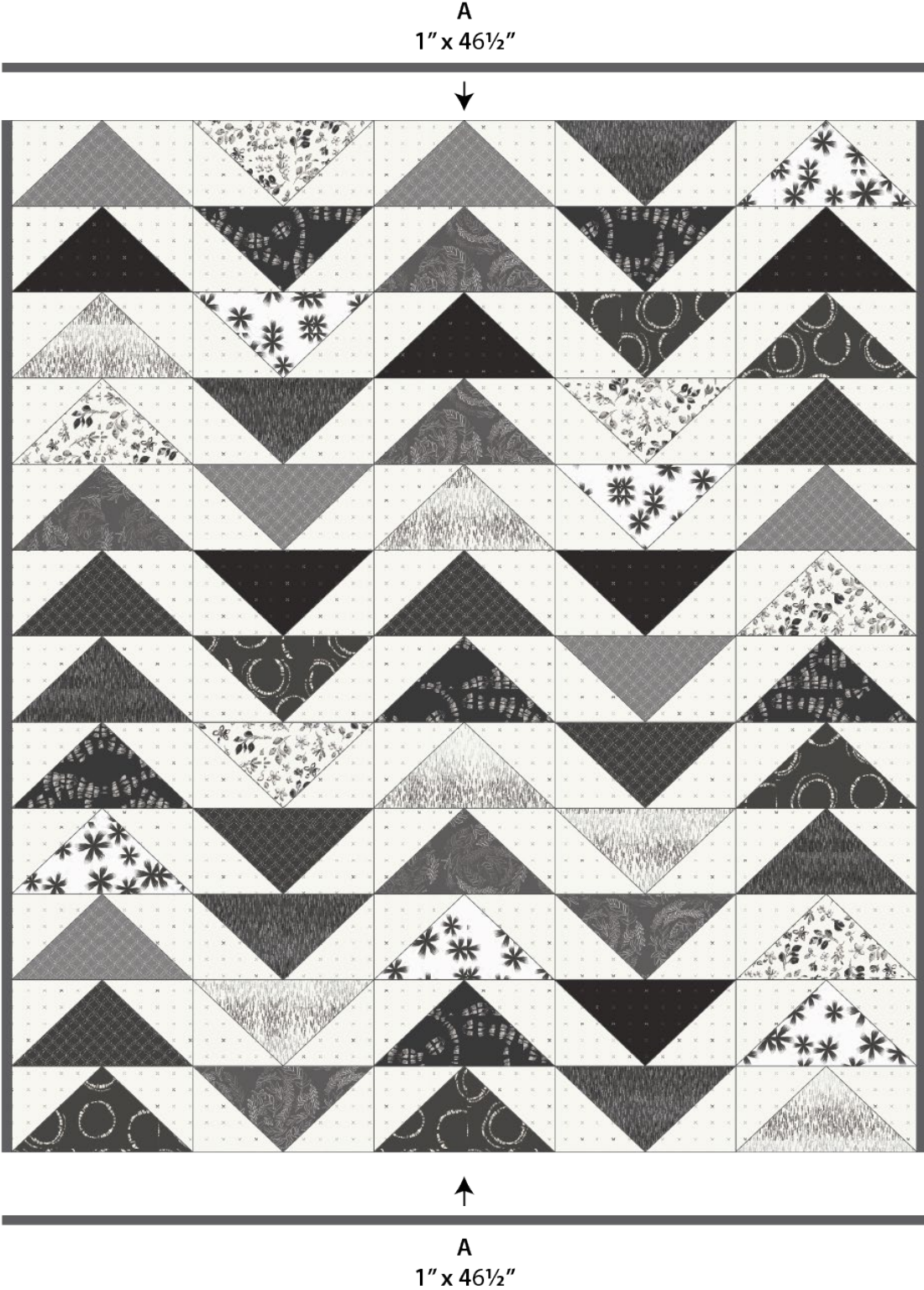


DIAGRAM 7

TOP ASSEMBLY

- Join 2 (two) 5" x 23½" strips from Fabric **M** with one **MLM** unit, as shown in the diagram below.
- Make a total of 2 (two) of these units.

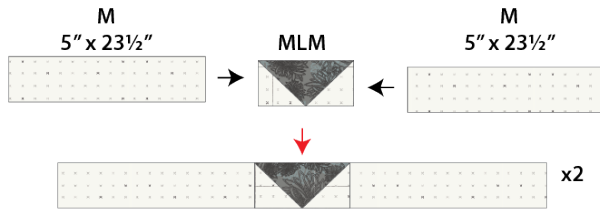


DIAGRAM 8

- Sew the strips made in the diagram above to each long side of the quilt, as shown.

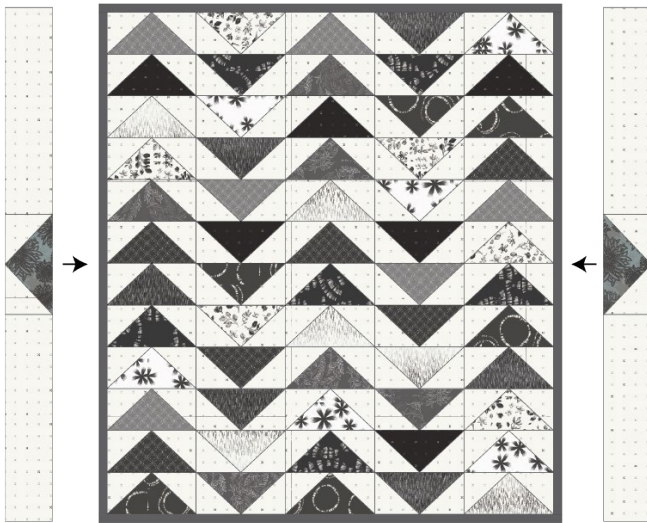


DIAGRAM 9

- Join 2 (two) 5" x 23½" strips from Fabric **M** with one **MAM** unit, as shown in the diagram below.
- Make a total of 2 (two) of these units.

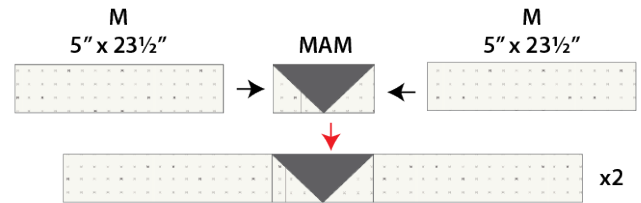


DIAGRAM 10

- Sew the strips made in the diagram above to top and bottom of the quilt, as shown, making sure all edges are matched.

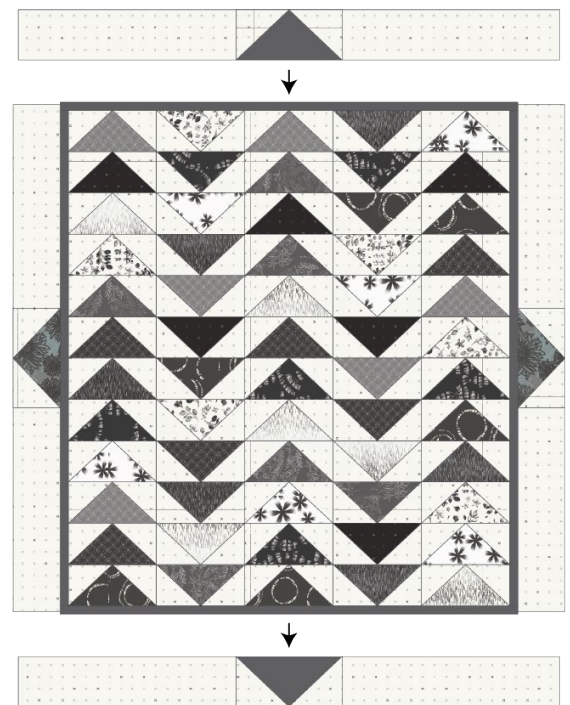


DIAGRAM 11

- See the pattern cover image for the finished quilt.

QUILT ASSEMBLY

Sew rights sides together.

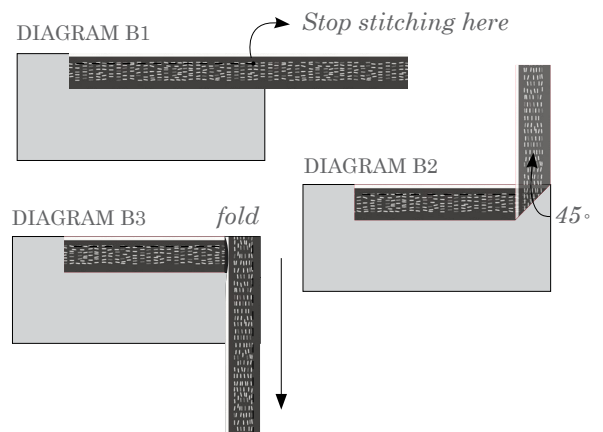
- Place BACKING FABRIC on a large surface wrong side up. Stretch it with masking tape against that surface.
- Place BATTING on top of backing fabric.
- Place TOP on top of the batting with right side facing up. Smooth away wrinkles using your hands.
- Pin all layers together and baste with basting thread, using long stitches. You can also use safety pins to join the layers.
- Machine or hand quilt starting at the center and working towards the corners. Remember that quilting motifs are a matter of personal preference. Have fun choosing yours!
- After you finished, trim excess of any fabric or batting, squaring the quilt to proceed to bind it.

BINDING

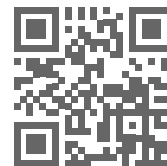
Sew rights sides together.

- Sew 7 (seven) 2½" strips of fabric **N** to make a long strip. Start sewing the binding strip in the middle of one of the sides of the quilt, placing the strip right side down and leaving an approximated 5" tail. Sew with ¼" seam allowance (using straight stitch), aligning the strip's raw edge with the quilt top's raw edge.
- Stop stitching ¼" before the edge of the quilt (DIAGRAM B 1). Clip the threads. Remove the quilt from under the machine presser foot. Fold the strip in a motion of 45° and upward, pressing with your fingers (DIAGRAM B2). Hold this fold with your finger, bring the strip down in line with the next edge, making a horizontal fold that aligns with the top edge of the quilt (DIAGRAM B3). Start sewing at ¼" of the border, stitching all the layers. Do the same in the four corners of the quilt.

- Stop stitching before you reach the last 5 or 6 inches. Cut the threads and remove the quilt from under the machine presser foot. Lay the loose ends of the binding flat along the quilt edge, folding the ends back on themselves where they meet. Press them together to form a crease. Using this crease as the stitching line, sew the two open ends of the binding with right sides together (you can help yourself marking with a pencil if the crease is difficult to see).
- Trim seam to ¼" and press open. Complete the sewing. Turn binding to back of the quilt, turn raw edge inside and stitch by hand using blind stitch.



- If you are using our 2.5 edition (binding fabric), click or scan this QR code to see a tutorial on how to use this specialty fabric.



XXXXXXXXXXXXXXXXXXXXXXXXXXXXXXXXXXXX

*Congratulations
& enjoy*

XXXXXXXXXXXXXXXXXXXXXXXXXXXXXXXXXXXX



artgalleryfabrics.com

NOTE: While all possible care has been taken to ensure the accuracy of this pattern, We are not responsible for printing errors or the way in which individual work varies.

Please read instructions carefully before starting the construction of this quilt. If desired, wash and iron your fabrics before starting to cut.

© 2024 Courtesy of Art Gallery Quilts LLC. All Rights Reserved.