



Luminous



FREE PATTERN



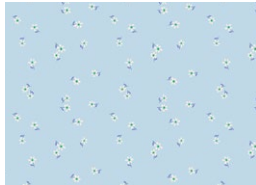
Luminous

QUILT DESIGNED BY *AGEstudio*

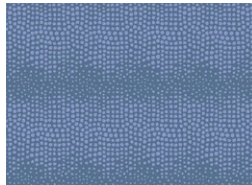


Daisy

FABRICS DESIGNED BY MAUREEN CRACKNELL



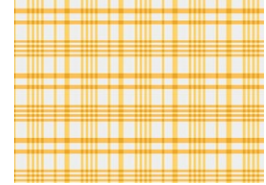
DSY24401
DRIFTING FLORETS AIRY



DSY24405
FALLEN STONES



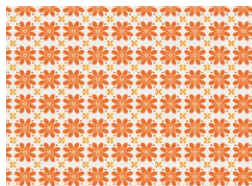
DSY24410
REFLECTIVE MEADOW



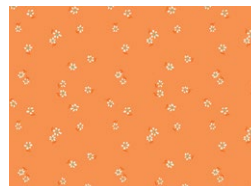
PLD700
HAPPY PLAID SUN



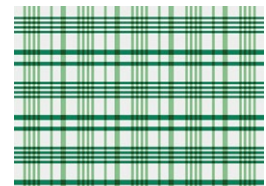
DSY24411
HAZY DAISIES GLOW



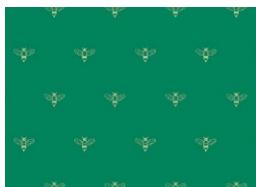
DSY24413
FOLLOW THE SUN



DSY24414
DRIFTING FLORETS MARMALADE



PLD701
HAPPY PLAID VERT



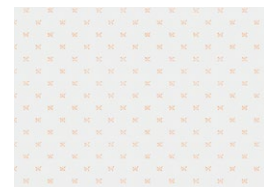
DSY24408
HONEYBEE LANE



DSY24415
GARDEN PATH DEEP



DSY24406
FLORAL TRELLIS



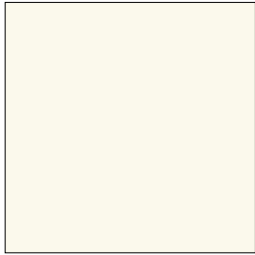
DSY24412
FLUTTERING FIREFLIES



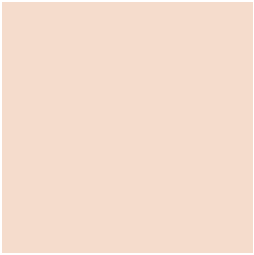
DSY24407
RAISING DAISY



ADDITIONAL BLENDERS FOR THIS PROJECT



PE-408
WHITE LINEN



PE-471
SWEET MACADAMIA



PE-467
NIGHT SEA



PE-415
PARISIAN BLUE



FINISHED SIZE | 78" x 90"

FABRIC REQUIREMENTS

Fabric A	DSY24401	½.
Fabric B	DSY24405	½.
Fabric C	DSY24410	¼.
Fabric D	PLD700	¼.
Fabric E	DSY24411	½.
Fabric F	DSY24413	½.
Fabric G	DSY24414	½.
Fabric H	PLD701	½.
Fabric I	DSY24402	½.
Fabric J	DSY24408	½.
Fabric K	DSY24415	½.
Fabric L	DSY24406	¼.
Fabric M	DSY24412	½.
Fabric N	PE408	4½.
Fabric O	PE467	½ yd.
Fabric P	PE471	¼ yd.
Fabric Q	PE415	¾ yd.

BACKING FABRIC
DSY24407 6½ yds (Suggested)

BINDING FABRIC
Fabric **Q** PE415 (Included)

CUTTING DIRECTIONS

¼" seam allowances are included.
WOF means width of the fabric.

- Seven (7) 7¼" squares from fabric **A**.
- Nine (9) 7¼" squares from fabric **B**.
- Three (3) 7¼" squares from fabric **C**.
- Four (4) 7¼" squares from fabric **D**.
- Six (6) 7¼" squares from fabric **E**.
- Seven (7) 7¼" squares from fabric **F**.
- Eight (8) 7¼" squares from fabric **G**.
- Eight (8) 7¼" squares from fabric **H**.
- Eight (8) 7¼" squares from fabric **I**.
- Eight (8) 7¼" squares from fabric **J**.
- Eight (8) 7¼" squares from fabric **K**.
- Five (5) 7¼" squares from fabric **L**.
- Ten (10) 7¼" squares from fabric **M**.
- One hundred and four (104) 7¼" squares from fabric **N**.
- Eight (8) 7¼" squares from fabric **O**.
- Five (5) 7¼" squares from fabric **P**.

CONSTRUCTION

Sew all rights sides together with ¼" seam allowance.

Quarter Square Triangle construction

Step 1

- Start by placing one (1) 7¼" square from fabrics **N** and **G** right sides facing together.
- Mark a diagonal line on the wrong side of the square, and sew a scant ¼" on both side of the drawn line.
- Use a rotary cutter to cut the squares on the drawn line.
- You should end up with two **N-G** HST, trim each piece to a 6⅞" square.
- See diagram 1 for reference.

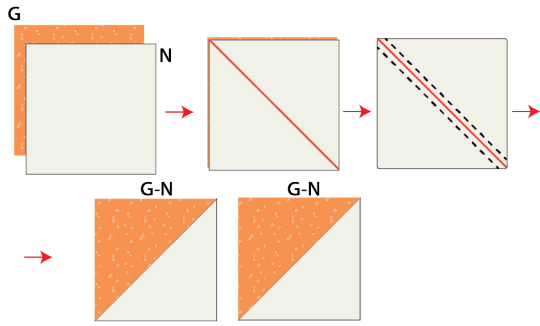


DIAGRAM 1

Step 2

- Take one **G-N** HST and mark a line perpendicular to the seam line on the wrong side of the fabric. See Figure 1.
- With RST, alternating dark and light fabrics, align the outside edges of the two HST and nest the seam allowances together. If you feel more comfortable, use a pin or two to hold both pieces together. See Figure 2.
- Stitch a scant $\frac{1}{4}$ " away from each side of the drawn line. See Figure 3.
- Using a rotary cutter cut on the drawn line. You will end up with two (2) **N-G QST** (Quarter Square Triangles). Trim each piece to a $6\frac{1}{2}$ " square.
- Repeat these step with the same fabrics seven (7) more times. You should end up with a total of sixteen (16) **N-G** (QST).

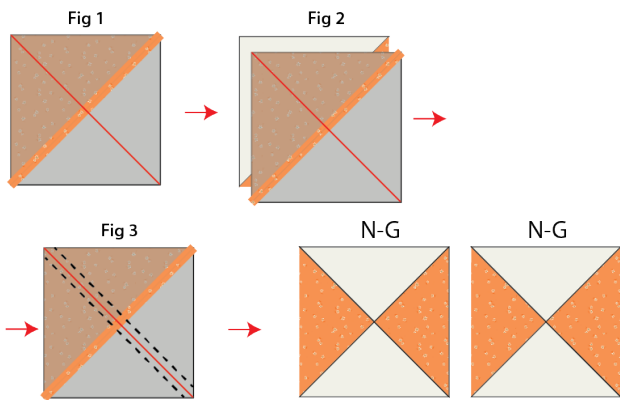


DIAGRAM 2

- Repeat the quarter square triangle (QST) method with eight (8) $7\frac{1}{4}$ " squares from fabrics **N** and **H**. You should get a total of sixteen (16) **N-H** (QST). You will only need fifteen (15) **N-H** QST.

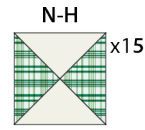


DIAGRAM 3

- Repeat the quarter square triangle (QST) method with seven (7) $7\frac{1}{4}$ " squares from fabrics **N** and **F**. You should get a total of thirteen (13) **N-F** (QST). You will only need thirteen (13) **N-F** QST.

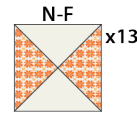


DIAGRAM 4

- Repeat the quarter square triangle (QST) method with eight (8) $7\frac{1}{4}$ " squares from fabrics **N** and **I**. You should get a total of sixteen (16) **N-I** (QST). You will only need fifteen (15) **N-I** QST.

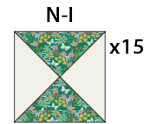


DIAGRAM 5

- Repeat the quarter square triangle (QST) method with eight (8) $7\frac{1}{4}$ " squares from fabrics **N** and **J**. You should get a total of sixteen (16) **N-J** (QST). You will only need fifteen (15) **N-J** QST.

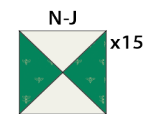


DIAGRAM 6

- Repeat the quarter square triangle (QST) method with six (6) $7\frac{1}{4}$ " squares from fabrics **N** and **E**. You should get a total of twelve (12) **N-E** (QST). You will only need eleven (11) **N-E** QST.

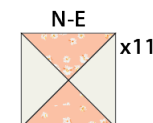


DIAGRAM 7

- Repeat the quarter square triangle (QST) method with eight (8) $7\frac{1}{4}$ " squares from fabrics **N** and **K**. You should get a total of sixteen (16) **N-K** (QST). You will only need fifteen (15) **N-K** QST.

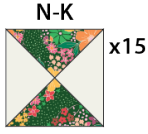


DIAGRAM 8

- Repeat the quarter square triangle (QST) method with eight (8) $7\frac{1}{4}$ " squares from fabrics **N** and **O**. You should get a total of sixteen (16) **N-O** (QST). You will only need fifteen (15) **N-O** QST.

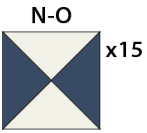


DIAGRAM 9

- Repeat the quarter square triangle (QST) method with nine (9) $7\frac{1}{4}$ " squares from fabrics **N** and **B**. You should get a total of eighteen (18) **N-B** (QST). You will only need seventeen (17) **N-B** QST.

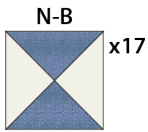


DIAGRAM 10

- Repeat the quarter square triangle (QST) method with seven (7) $7\frac{1}{4}$ " squares from fabrics **N** and **A**. You should get a total of fourteen (14) **N-A** (QST). You will only need thirteen (13) **N-A** QST.

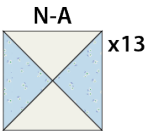


DIAGRAM 11

- Repeat the quarter square triangle (QST) method with five (5) $7\frac{1}{4}$ " squares from fabrics **N** and **P**. You should get a total of ten (10) **N-P** (QST). You will only need nine (9) **N-P** QST.

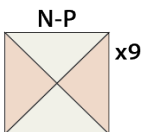


DIAGRAM 12

- Repeat the quarter square triangle (QST) method with four (4) $7\frac{1}{4}$ " squares from fabrics **N** and **D**. You should get a total of eight (8) **N-D** (QST). You will only need seven (7) **N-D** QST.

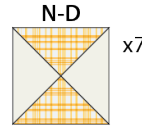


DIAGRAM 13

- Repeat the quarter square triangle (QST) method with three (3) $7\frac{1}{4}$ " squares from fabrics **N** and **C**. You should get a total of six (6) **N-C** (QST). You will only need five (5) **N-C** QST.

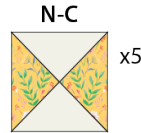


DIAGRAM 14

- Repeat the quarter square triangle (QST) method with five (5) $7\frac{1}{4}$ " squares from fabrics **N** and **L**. You should get a total of ten (10) **N-L** (QST).

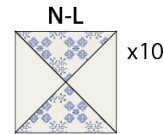


DIAGRAM 15

- Repeat the quarter square triangle (QST) method with ten (10) $7\frac{1}{4}$ " squares from fabrics **N** and **M**. You should get a total of twenty (20) **N-M** (QST).

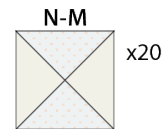


DIAGRAM 16

QUILT TOP

- Arrange all QST into fifteen rows of thirteen (13) pieces each and sew each row.
- See diagram below for reference.

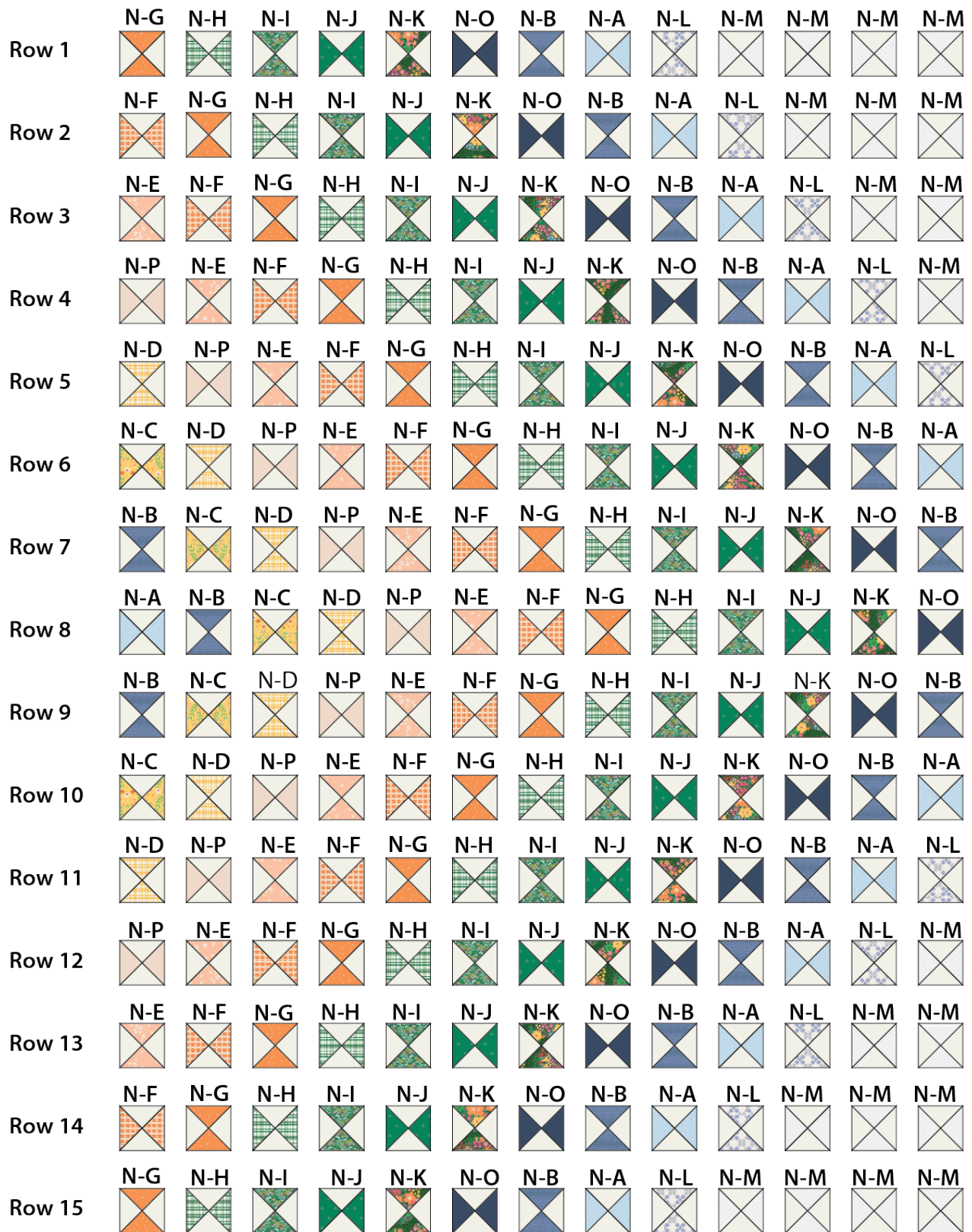


DIAGRAM 17

- Sew all rows together.

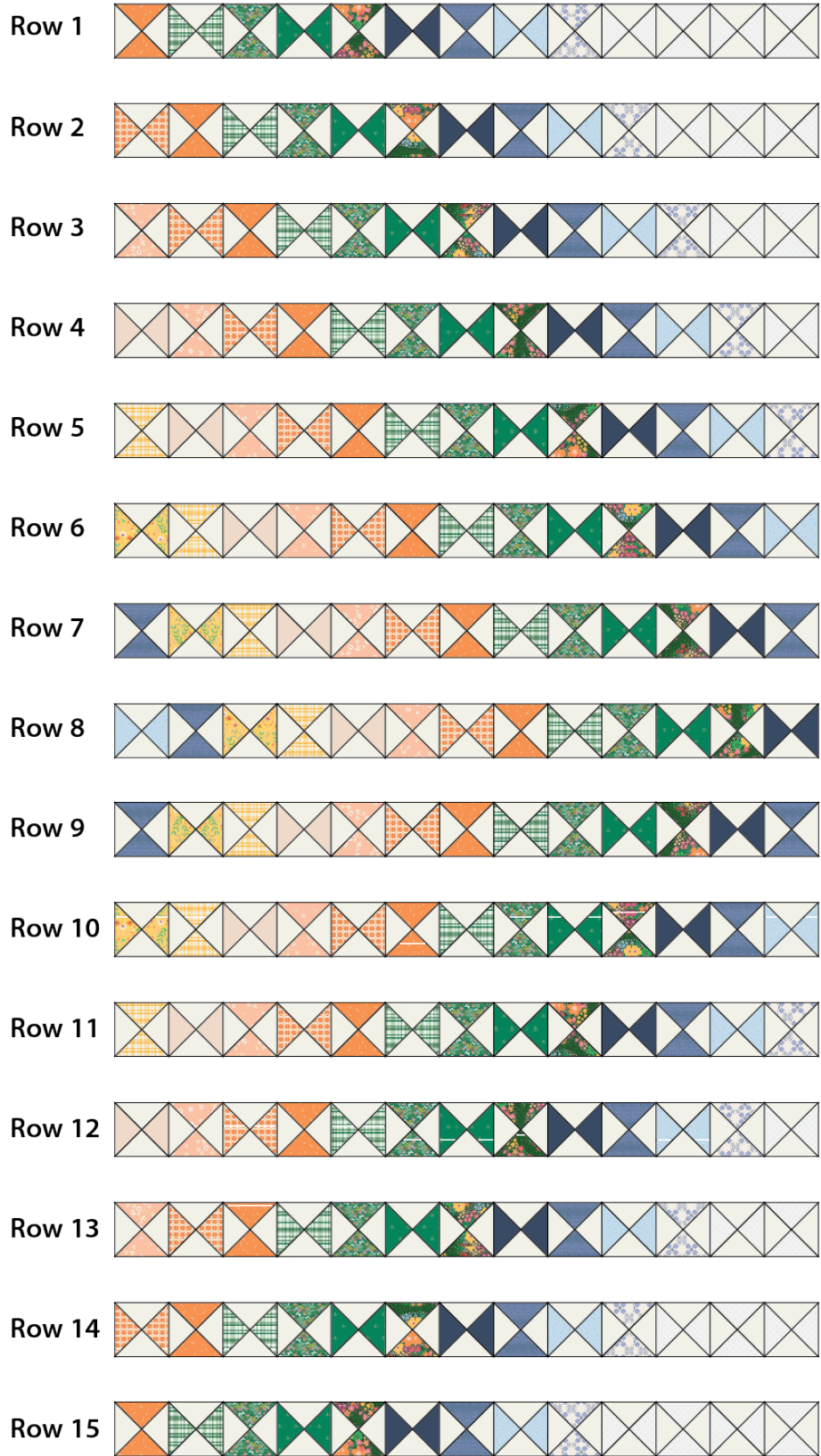


DIAGRAM 18

- Quilt as desired

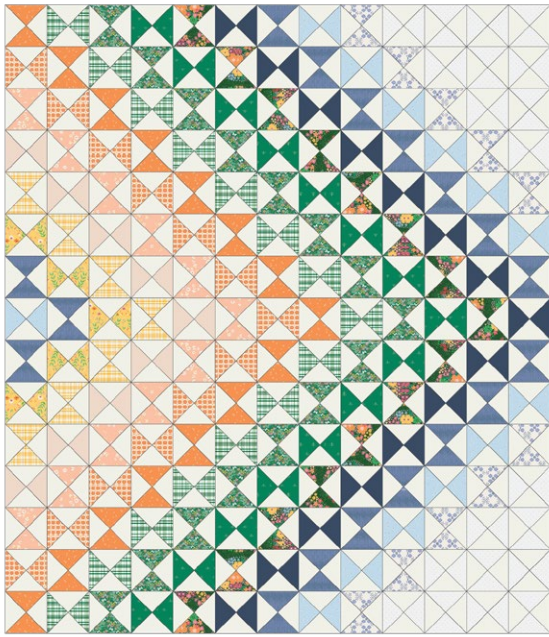


DIAGRAM 18

QUILT ASSEMBLY

Sew rights sides together.

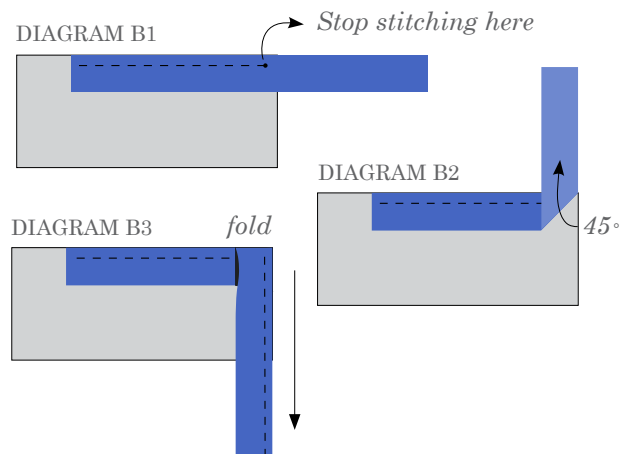
- Place BACKING FABRIC on a large surface wrong side up. Stretch it with masking tape against that surface.
- Place BATTING on top of backing fabric.
- Place TOP on top of the batting with right side facing up. Smooth away wrinkles using your hands.
- Pin all layers together and baste with basting thread, using long stitches. You can also use safety pins to join the layers.
- Machine or hand quilt starting at the center and working towards the corners. Remember that quilting motifs are a matter of personal preference. Have fun choosing yours!
- After you finished, trim excess of any fabric or batting, squaring the quilt to proceed to bind it.

BINDING

Sew rights sides together.

- Cut enough strips $2\frac{1}{2}$ " wide by the width of the fabric Q to make a final strip 346" long. Start sewing the binding strip in the middle of one of the sides of the quilt, placing the strip right side down and leaving an approximated 5" tail. Sew with $\frac{1}{4}$ " seam allowance (using straight stitch), aligning the strip's raw edge with the quilt top's raw edge.

- Stop stitching $\frac{1}{4}$ " before the edge of the quilt (DIAGRAM B 1). Clip the threads. Remove the quilt from under the machine presser foot. Fold the strip in a motion of 45° and upward, pressing with your fingers (DIAGRAM B2). Hold this fold with your finger, bring the strip down in line with the next edge, making a horizontal fold that aligns with the top edge of the quilt (DIAGRAM B3). Start sewing at $\frac{1}{4}$ " of the border, stitching all the layers. Do the same in the four corners of the quilt.
- Stop stitching before you reach the last 5 or 6 inches. Cut the threads and remove the quilt from under the machine presser foot. Lay the loose ends of the binding flat along the quilt edge, folding the ends back on themselves where they meet. Press them together to form a crease. Using this crease as the stitching line, sew the two open ends of the binding with right sides together (you can help yourself marking with a pencil if the crease is difficult to see).
- Trim seam to $\frac{1}{4}$ " and press open. Complete the sewing. Turn binding to back of the quilt, turn raw edge inside and stitch by hand using blind stitch.



- If you are using our 2.5 edition (binding fabric), click or scan this QR code to see a tutorial on how to use this specialty fabric.



