

featuring A YEAR IN PETALS COLLECTION BY BONNIE CHRISTINE

# LAZY PILLOW

10" EDITION

X  
X  
X  
X  
X  
X  
X  
X  
X  
X  
X  
X  
X  
X  
X  
X  
X



fabric  
wonders

10"

FRIENDLY

FREE PATTERN

X X



XX

# LAZY PILLOW

10" EDITION

PILLOW DESIGNED BY *AGFstudio*

A YEAR IN  
*petals*

FABRICS DESIGNED BY BONNIE CHRISTINE



**Fabric A**  
AYP39200  
GARDEN SONNET DUSK



**Fabric B**  
AYP39201  
APPALACHIAN GOLDEN HOUR



**Fabric C**  
AYP39203  
BOUNTIFUL GARDEN DAY



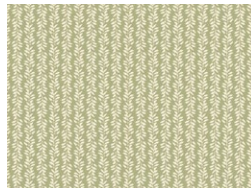
**Fabric D**  
AYP39204  
HARVEST HONEY



**Fabric E**  
AYP39205  
SMOKY BLOSSOMS CLOUD



**Fabric F**  
AYP39206  
MEADOW CLEAR SKIES



**Fabric G**  
AYP39207  
DELICATE VINES SAGE



**Fabric H**  
AYP39208  
MOUNTAIN BUDS WHISPER



**Fabric I**  
AYP49200  
GARDEN SONNET DAWN



**Fabric J**  
AYP49202  
BLUE RIDGE BUTTERCUP



**Fabric K**  
AYP49203  
BOUNTIFUL GARDEN NIGHT



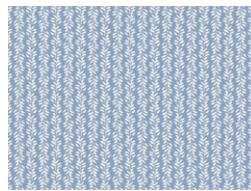
**Fabric L**  
AYP49204  
HARVEST BLUSH



**Fabric M**  
AYP49205  
SMOKY BLOSSOMS FIR



**Fabric N**  
AYP49206  
MEADOW SUNNY SKIES



**Fabric O**  
AYP49207  
DELICATE VINES MIST



**Fabric P**  
AYP49209  
MOUNTAIN FLORA BLOOM



# LAZY PILLOW



10" EDITION

FINISHED SIZE | 31" x 54"

*Please read all instructions thoroughly before beginning.*

## FABRIC REQUIREMENTS

*One set of 10" fabric wonder squares are needed to complete this pillow.*

**Fabric A** AYP39200 (3) 10" squares.

**Fabric B** AYP39201 (3) 10" squares.

**Fabric C** AYP39203 (3) 10" squares.

**Fabric D** AYP39204 (3) 10" squares.

**Fabric E** AYP39205 (3) 10" squares.

**Fabric F** AYP39206 (3) 10" squares.

**Fabric G** AYP39207 (2) 10" squares.

**Fabric H** AYP39208 (2) 10" squares.

**Fabric I** AYP49200 (2) 10" squares.

**Fabric J** AYP49202 (3) 10" squares.

**Fabric K** AYP49203 (2) 10" squares.

**Fabric L** AYP49204 (4) 10" squares.

**Fabric M** AYP49205 (2) 10" squares.

**Fabric N** AYP49206 (3) 10" squares.

**Fabric O** AYP49207 (2) 10" squares.

**Fabric P** AYP49209 (2) 10" squares.

## CUTTING DIRECTIONS

*Please ensure that all fabrics are ironed thoroughly before cutting them. ¼" seam allowances are included. WOF means width of the fabric.*

*For this project don't cut off the pinked edges of each 10" pre-cut fabric wonder square.*

### Fabric A

- Cut into 12 (twelve) 5" squares.

### Fabric B

- Cut into 12 (twelve) 5" squares.

### Fabric C

- Cut into 12 (twelve) 5" squares.

### Fabric D

- Cut into 12 (twelve) 5" squares.

### Fabric E

- Cut into 12 (twelve) 5" squares.

### Fabric F

- Cut into 12 (twelve) 5" squares.

### Fabric G

- Cut into 8 (eight) 5" squares.

### Fabric H

- Cut into 8 (eight) 5" squares.

### Fabric I

- Cut into 8 (eight) 5" squares.

### Fabric J

- Cut into 12 (twelve) 5" squares.

### Fabric K

- Cut into 8 (eight) 5" squares.

### Fabric L

- Cut into 16 (sixteen) 5" squares.

### Fabric M

- Cut into 8 (eight) 5" squares.

### Fabric N

- Cut into 12 (twelve) 5" squares.

### Fabric O

- Cut into 8 (eight) 5" squares.

### Fabric P

- Cut into 8 (eight) 5" squares.

- Begin by folding your 10" square into 4 (four) sections to create a crease. This will be your cutting guide.

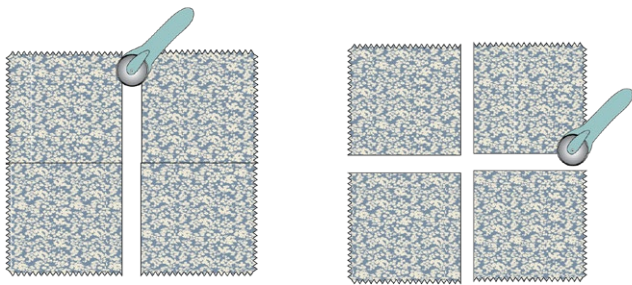
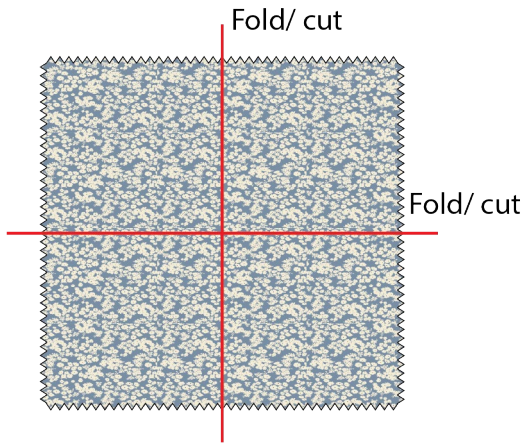


DIAGRAM 1

- When sewing the 5" squares, make sure to align the vertex of the pinked edges to the straight edge from the following 5" square to be sewn, sew them using 1/4" seam allowance.

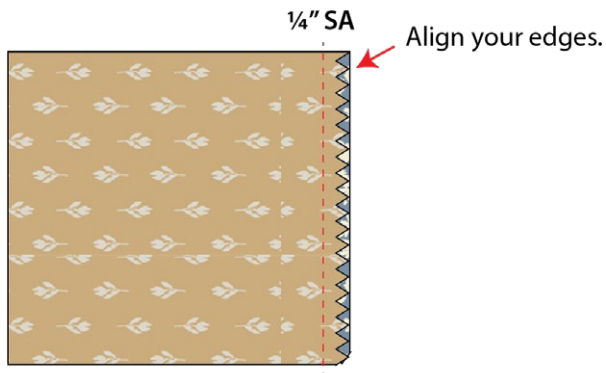


DIAGRAM 2

• Arrange the following 5" squares into 7 (seven) rows of 12 units each..

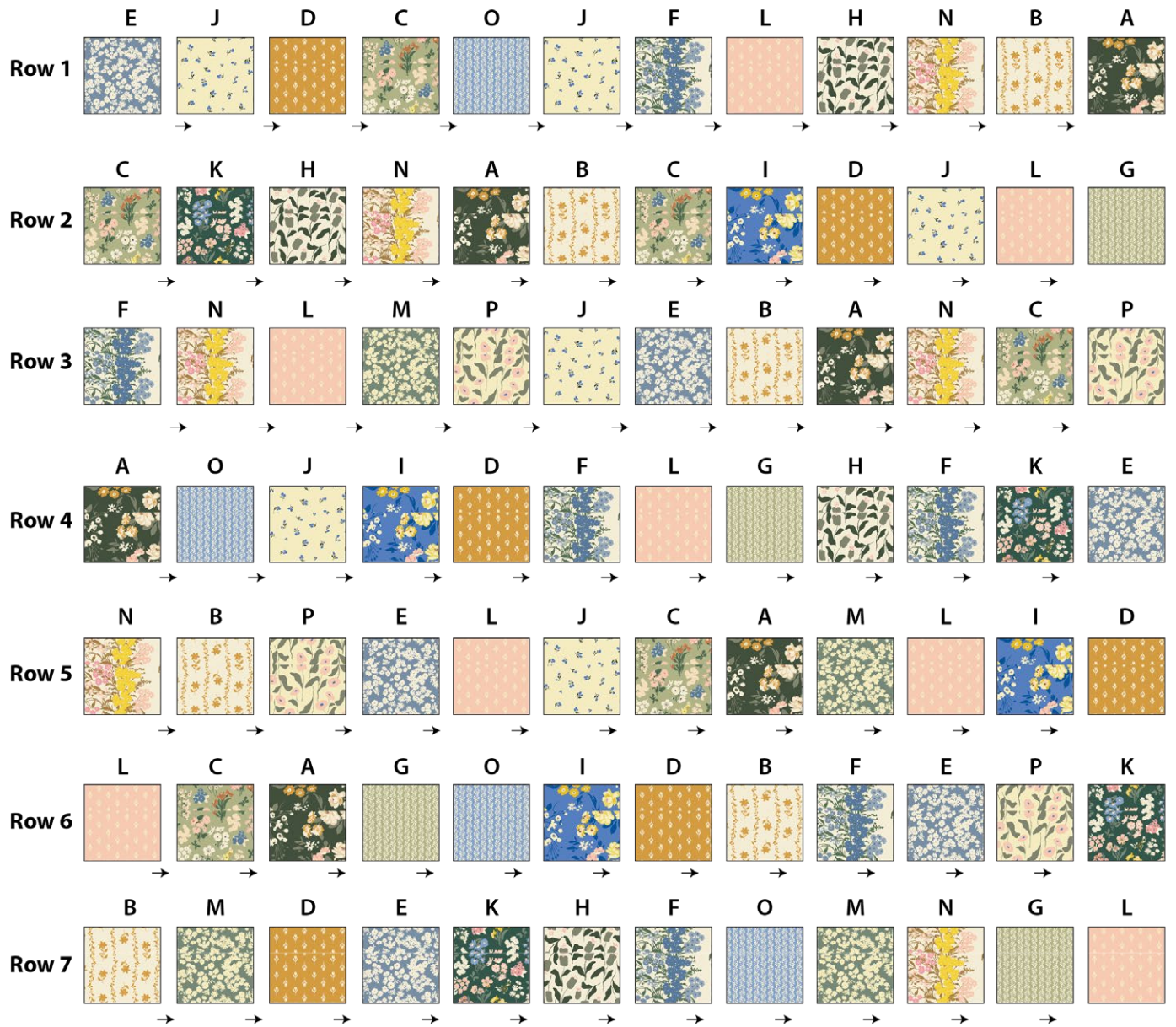


DIAGRAM 3

- Now sew the rows from 1 - 7 together.
- Make 2 (two) of these panels, 1 (one) for the top and 1 (one) for the bottom.



DIAGRAM 4

- Now that you have your panels complete, sew them around leaving a space to stuff the pillow.
- Once its stuffed, close it by hand or edge stitch.

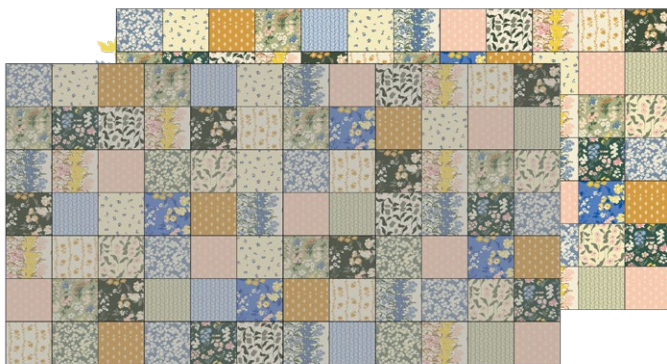


DIAGRAM 5

- Finally every 2 (two) or 3 (three) squares handstitch a knot through all layers to create a cushion effect.
- Add tassels at the 4 corners.

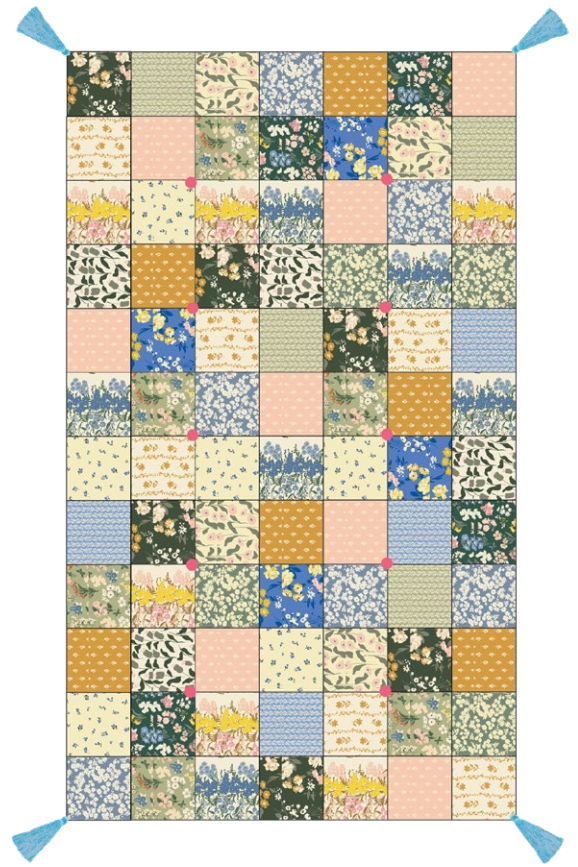


DIAGRAM 6

XXXXXXXXXXXXXXXXXXXXXXXXXXXXXXXXXXXX

Congratulations  
& enjoy

XXXXXXXXXXXXXXXXXXXXXXXXXXXXXXXXXXXX



[artgalleryfabrics.com](http://artgalleryfabrics.com)

NOTE: While all possible care has been taken to ensure the accuracy of this pattern, We are not responsible for printing errors or the way in which individual work varies.

Please read instructions carefully before starting the construction of this quilt. If desired, wash and iron your fabrics before starting to cut.

© 2024 Courtesy of Art Gallery Quilts LLC. All Rights Reserved.