

INKPERFECT-CARBON Collection

PROJECT SHEET



Some of the projects featured in our lookbooks link back to patterns that were originally created in the past with different fabric selections. This project sheet will serve you as a quick reference to find and replace with the specific fabrics we used for this project. Happy sewing!

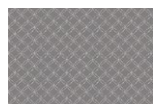
INK PERFECT

× × × CARBON EDITION

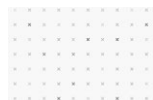
FABRICS DESIGNED BY AGF STUDIO



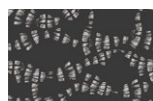
FABRIC A
INKL21913
FERNLIKE
IMPRESSIONS



FABRIC B
INK21906
INTERWOVEN
ASH



FABRIC C
INK21903
CROSSED
GRID ASH



FABRIC D
INK21910
ECHOES OF
CARBON



FABRIC E
INK21912
CROSSED
GRID CHAR



FABRIC F
INK21914
WASHED
STROKES



FABRIC G
PE431
MYSTIC GREY



FABRIC H
BININK21
INK BOUND



BACKING
INK21911
SASHIKO
CRAFT CHAR

PROJECT INFO



PROJECT NAME: UNWIND AND CHILL

DESIGNED BY: AGF STUDIO

FINISHED SIZE: 56"×14"

[CLICK HERE FOR PATTERN](#)

FREE PATTERN

PLEASE CONSULT PATTERN FOR YARDAGE REQUIREMENTS.