

TUMBLEWEED *Collection*

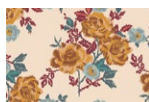
PROJECT SHEET



Some of the projects featured in our lookbooks link back to patterns that were originally created in the past with different fabric selections. This project sheet will serve you as a quick reference to find and replace with the specific fabrics we used for this project. Happy sewing!

Tumbleweed

FABRICS DESIGNED BY SHARON HOLLAND



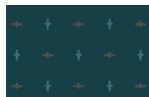
FABRIC A
TBW65610
DESERT ROSE OPAL



FABRIC B
TBW65611
LITTLE JEWEL STAR VALLEY



FABRIC C
TBW65608
DIRECTION



FABRIC D
TBW65615
FOUR CORNERS

FABRIC REQUIREMENTS

PROJECT INFO



PROJECT NAME: NARAH

DESIGNED BY: AGF STUDIO

FINISHED SIZE: 24" x 24"

[CLICK HERE FOR PATTERN](#)

FREE PATTERN

PLEASE CONSULT PATTERN FOR YARDAGE REQUIREMENTS.