

Kool PILLOW

DESIGNED BY AGF STUDIO

AGFstudio



pine LULLABY

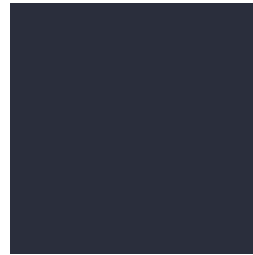
FABRICS DESIGNED BY AGF STUDIO



Fabric I
KC-1305
FURRIES SWEET



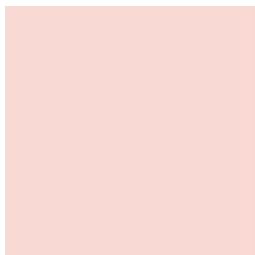
Fabric B
KC-1302
LOBLOLLY PINE



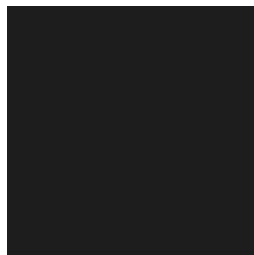
Fabric C
KS-101
DEEP DARK OCEAN



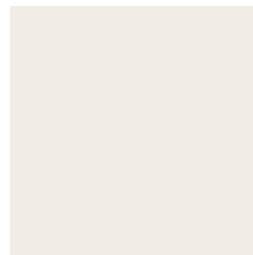
Fabric D
KS-125
DENIM BLUE



Fabric E
KS-110
CRYSTAL PINK



Fabric F
KS-107
CAVIAR



Fabric G
KS-109
WHITE LINEN



Wool Pillow

FINISHED SIZE | 16" x 13"

Please read all instructions thoroughly before beginning.

FABRIC REQUIREMENTS

Fabric A	KC-1305	1/8 yd.
Fabric B	KC-1302	F8.
Fabric C	KS-101	1 1/2 yd.
Fabric D	KS-125	3/4 yd.
Fabric E	KS-110	1/8 yd.
Fabric F	KS-107	1/8 yd.
Fabric G	KS-109	1/8 yd.

This pattern is specifically designed for knit fabric. If you decide to use flannel fabric, please be aware that you will need to add an extra 1/4" seam allowance to all templates.

CUTTING DIRECTIONS

WOF means width of the fabric. Please ensure that all fabrics are ironed thoroughly before cutting them. 1/4" seam allowances are included.

Fabric A:

- Template 5 (Cut 2)

Fabric B:

- Template 3 (Cut 1)

Fabric C:

- Template 1 (Cut 2)
- Template 4 (Cut 4)

Fabric D:

- Template 2 (Cut 1)

Fabric E:

- Template 6 (Cut 2)

Fabric F:

- Template 7 (Cut 2)

- Template 8 (Cut 2)

- Template 9 (Cut 1)

Fabric G:

- Template 10 and 11 (Cut 1)

CONSTRUCTION

Sew all rights sides together with 1/4" seam allowance.

- Start by putting the pieces of the template together.
- Match the notches and use tape to put them together.
- Cut around each piece and the template will be ready to use. Fabric letters are also written on each template.

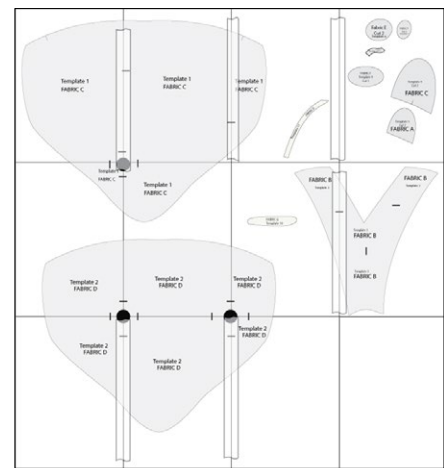


DIAGRAM 1

- Take fabric **D** (Template 2) and place it on top of fabric **C** (Template 1).
- Place batting under it and pin it around to secure the two fabrics together and batting.

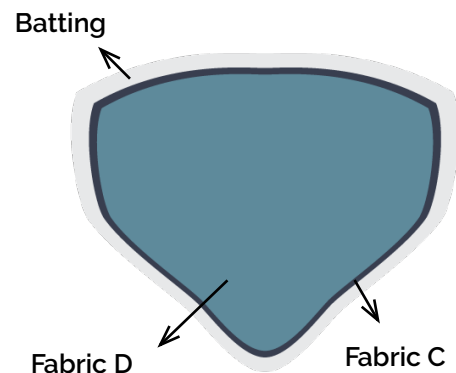


DIAGRAM 2

- Place fabric **B** (Template 3) on the top center.
- Sew it with Zig-Zag stitch all around fabric **B** (Template 3)
- Take fabric **F** (Template 9) and place it at the bottom of fabric B (Template 3)

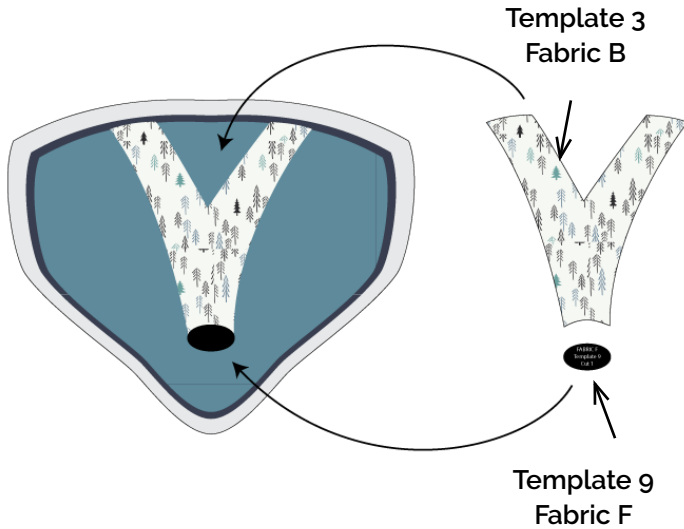


DIAGRAM 3

- Take fabric **F** (Template 7) which are the eyes and place it on each side of Fabric **B** (Template 3)
- Take fabric **F** (Template 8) the eyebrows; and place it above the eyes.
- Take fabric **E** (Template 6) rosy cheeks and place it around cheek level (See Diagram)

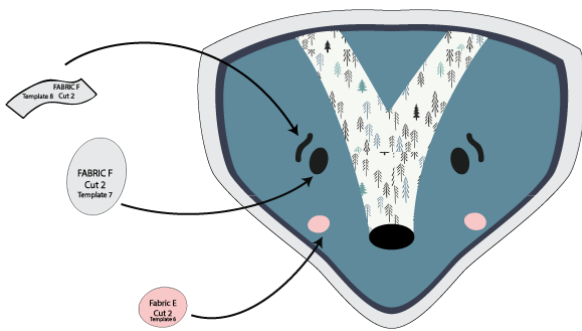


DIAGRAM 4

- Take two (2) fabric **A** (Template 5) and place it on fabric **C** (Template 4) the ears, and with a Zig-Zag stitch sew it all around.
- Take the other two (2) fabric **A** (Template 5) and place it right sides together with batting in between, sew around except for the bottom which allow you to flip it inside out.

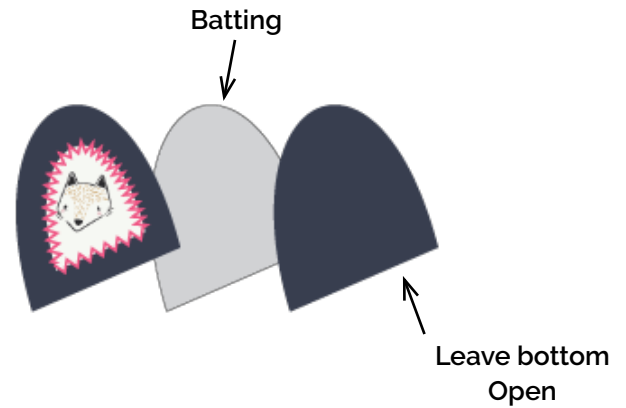


DIAGRAM 5

- Trim excess batting.
- Pin the ears matching the notches of the pattern on the top sides of face.
- Place the Fabric **C** (Template 1) on top and sew all around it. Leave a little opening, in order for you to flip it inside out and stuff it with pillow fill

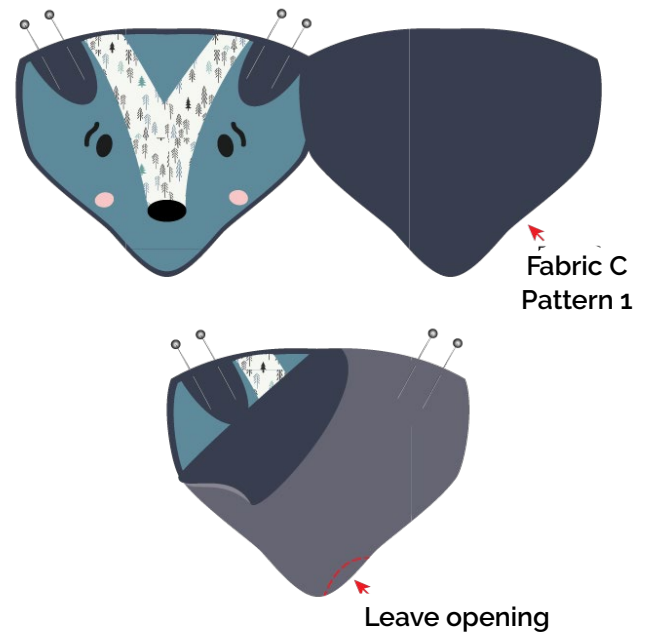


DIAGRAM 6

