



# Morning GLORY

QUILT DESIGNED BY AGFstudio

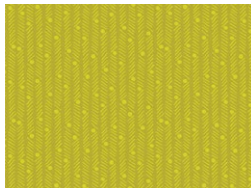
## SUNRISE SUNSET

FABRICS DESIGNED BY JESSICA SWIFT



**Fabric A**

SST85107  
MIDNIGHT MOONLIGHT



**Fabric B**

SST85110  
LIVELY LUMINOUS



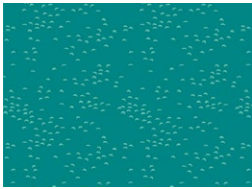
**Fabric C**

SST85108  
BEHIND THE VEIL



**Fabric D**

SST85103  
GREETING CHIRPS



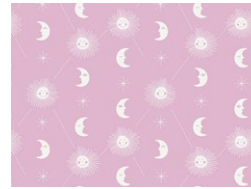
**Fabric E**

SST85101  
ETERNAL DRIFTING



**Fabric F**

SST85102  
MIRACLE MORNING



**Fabric G**

SST85106  
DAWN DUSK RHYTHM



**Fabric H**

SST85105  
JOYFUL-HOWL



**Fabric I**

DSE727  
AIRY



**Fabric J**

BINSST85  
GOOD DAY BOUND



# Morning GLORY

FINISHED SIZE | 64½" x 64½"

Please read all instructions thoroughly before beginning.

## FABRIC REQUIREMENTS

Fabric <b>A</b>	SST85107	5/8 yd.
Fabric <b>B</b>	SST85110	5/8 yd.
Fabric <b>C</b>	SST85108	5/8 yd.
Fabric <b>D</b>	SST85103	5/8 yd.
Fabric <b>E</b>	SST85101	5/8 yd.
Fabric <b>F</b>	SST85102	5/8 yd.
Fabric <b>G</b>	SST85106	5/8 yd.
Fabric <b>H</b>	SST85105	5/8 yd.
Fabric <b>I</b>	DSE727	3½ yd.
Fabric <b>J</b>	BINSST85	5/8 yd.

### BINDING FABRIC

Fabric **J** BINSST85 ½ yd. (Included)

### BACKING FABRIC

F85106a 4 yds (Suggested)

## CUTTING DIRECTIONS

Iron your fabrics thoroughly before cutting them. ¼" seam allowances are included. WOF means width of fabric.

### From EACH of the **A** through **H** fabrics:

- Cut three (3) 6" x WOF strips, then, SUB-CUT into sixteen (16) 6" squares for a total of one hundred and twenty-eight (128) 6" squares.

### Fabric **I**

- Cut Nineteen (19) 6" x WOF strips, then, SUB-CUT into one hundred and twenty eight (128) 6" squares.

### Fabric **J**

- Cut seven (7) WOF x 2½" strips (Binding).

## CONSTRUCTION

Sew all rights sides together with ¼" seam allowance. The use of starch is recommended when making HST.

### MAGIC EIGHT METHOD

- Take one (1) 6" square from fabrics **A** and **I**.
- Place one (1) 6" fabric **A** square right sides together with one (1) 6" fabric **I** square.



DIAGRAM 1

- Using a fabric marker and a clear quilting ruler, draw two (2) diagonal lines across the squares, as shown in the diagram below.
- Sew a **SCANT** ¼" seam on each side of each diagonal line creating a total of four (4) seams as illustrated in the diagram below.
- Press the sewn square to set the seams.
- Draw two (2) additional lines, one (1) vertical and one (1) horizontal, through the center of the square, forming a cross.
- Refer to the diagram for guidance.

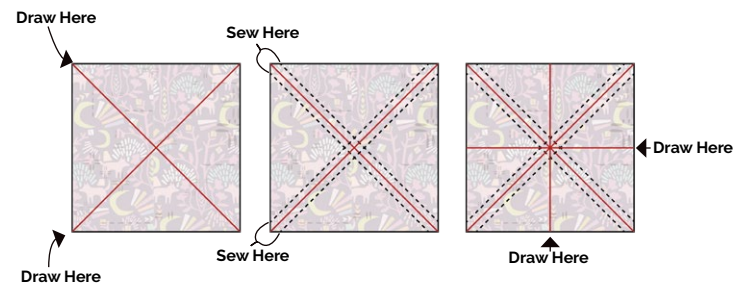


DIAGRAM 2

- Using a rotary cutter, cut along all the drawn lines. You will now have eight (8) triangle pieces.

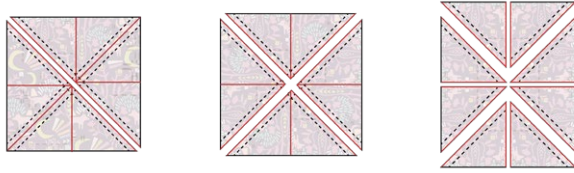


DIAGRAM 3

- Press seams to the side to create eight (8) HST units in the **AI** fabric combination.
- Trim the HST units to  $2\frac{1}{2}$ "
- Set the HST units aside for later use.



DIAGRAM 4

- Repeat the Magic Eight Method with the remaining 6" squares by pairing an **I** fabric with fabrics **A** through **H** to make a total of one hundred and twenty eight (128)  $2\frac{1}{2}$ " square HST units.

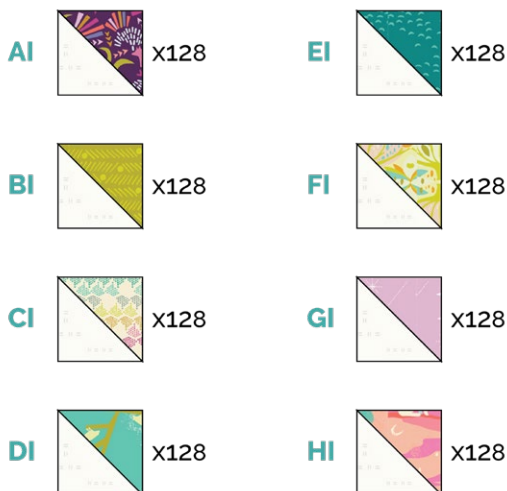


DIAGRAM 5

## BLOCK CONSTRUCTION

- Arrange sixteen (16) **AI** HST units into four (4) rows of four (4) units each.
- Join the units to make four (4) rows.
- Join the rows to make an  $8\frac{1}{2}$ " square block.
- Press seams open and set aside.

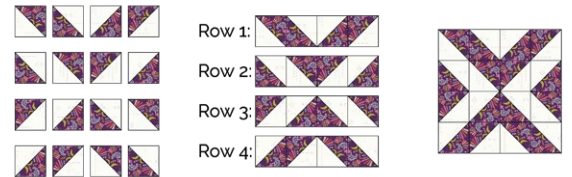


DIAGRAM 6

- Repeat the steps above for all HST combination units to create eight (8) blocks from each combination.
- In total, you should have eight (8) different block combinations, with eight (8) blocks made from each, for a total of sixty four (64) blocks.

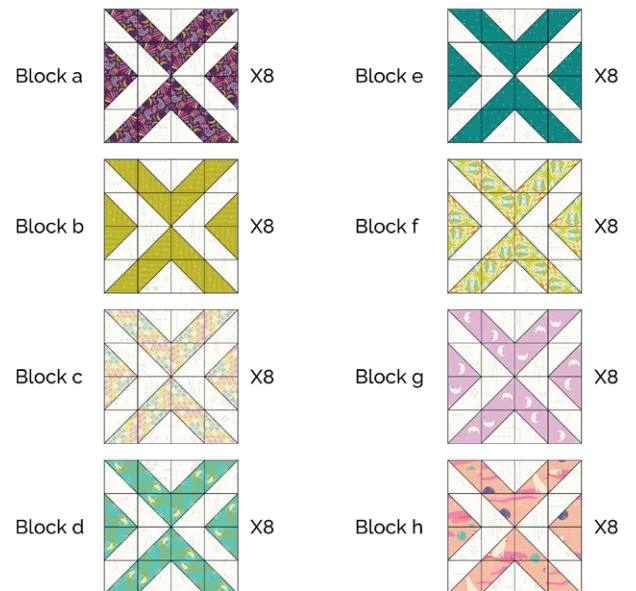


DIAGRAM 7







