

X
X
X
X
X
X
X
X
X
X
X
X
X

A stylized illustration of a pink and red flower with green leaves and a small blue butterfly. The flower is the central focus, with vibrant pink and red petals. Several green leaves are scattered around it, some with simple veins. A small blue butterfly is perched on one of the petals. The background is a light, textured cream color.



XXXXXXXXXXXXXXXXXXXX



Fierce

TABLE RUNNER

DESIGNED BY AGFstudio



EVE

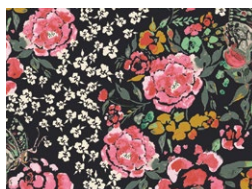
FABRICS DESIGNED BY BARI J.



Fabric A
EVE39800
JARDIN DELICATE



Fabric B
EVE39805
ROSEFIELD EMERALD



Fabric C
EVE29800
JARDIN ROBUST



Fabric D
EVE29804
FLUTTERFLIES EARTH



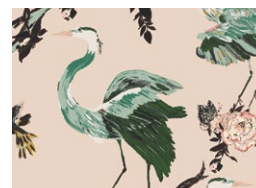
Fabric E
FE536
FUCHSIA



Fabric F
PE503
EUCALYPTUS



Fabric G (BINDING)
PE482
FOREST NIGHT



BACKING
EVE29802
HERONS GRACE



FEEL THE DIFFERENCE © 2021 Courtesy of Art Gallery Quilts LLC. All Rights Reserved.



FINISHED SIZE | 70" x 14"

FABRIC REQUIREMENTS

Fabric A	EVE39800	1¼ yd.
Fabric B	EVE39805	¼ yd.
Fabric C	EVE29800	¾ yd.
Fabric D	EVE29804	¼ yd.
Fabric E	FE536	¼ yd.
Fabric F	PE503	¼ yd.
Fabric G	PE482	¾ yd.

BACKING FABRIC
EVE29802 1 yds (Suggested)

BINDING FABRIC
Fabric **G** PE482 (Included)

CUTTING DIRECTIONS

Please ensure that all fabrics are ironed thoroughly before cutting them. ¼" seam allowances are included. WOF means width of the fabric.

Fabric A

- Four (4) 10½" x WOF strips.
- Sub-cut
- Ten (10) 10½" squares.

Fabric B

- Five (5) 1½" x WOF strips.
- Sub-cut
- Twelve (12) 5½" x 1½" strips.
 - Twenty four (24) 4½" x 1½" strips.
 - Twelve (12) 3½" x 1½" rectangles.

Fabric C

- Five (5) 1½" x WOF strips.
- Sub-cut
- Twelve (12) 5½" x 1½" strips.
 - Twenty four (24) 4½" x 1½" strips.

Fabric D

- One (1) 2½" x WOF strip.
- Sub-cut
- Twelve (12) 2½" squares.
- Two (2) 1½" x WOF strips.
- Sub-cut
- Twelve (12) 3½" x 1½" rectangles.
 - Twelve (12) 2½" x 1½" rectangles.

Fabric E

- One (1) 2½" x WOF strip.
- Sub-cut
- Twelve (12) 2½" squares.

Fabric F

- Four (4) 1½" x WOF strips.
- Sub-cut
- Twelve (12) 4½" x 1½" strips.
 - Twenty Four (24) 3½" x 1½" rectangles.
 - Twelve (12) 2½" x 1½" rectangles.

Fabric G

- Five (5) 2½" x WOF strips. (Binding)

CONSTRUCTION

Sew all rights sides together with $\frac{1}{4}$ " seam allowance.

Construction of Block Y:

We will need a total of twelve (12) block Y.

For this block we will need:

- One (1) $5\frac{1}{2}$ " x $1\frac{1}{2}$ " strip from fabric **C**.
- One (1) $4\frac{1}{2}$ " x $1\frac{1}{2}$ " strip from fabric **C**.
- One (1) $4\frac{1}{2}$ " x $1\frac{1}{2}$ " strip from fabric **B**.
- One (1) $3\frac{1}{2}$ " x $1\frac{1}{2}$ " rectangle from fabric **B**.
- One (1) $3\frac{1}{2}$ " x $1\frac{1}{2}$ " rectangle from fabric **F**.
- One (1) $2\frac{1}{2}$ " x $1\frac{1}{2}$ " rectangle from fabric **F**.
- One (1) $2\frac{1}{2}$ " square from fabric **D**.

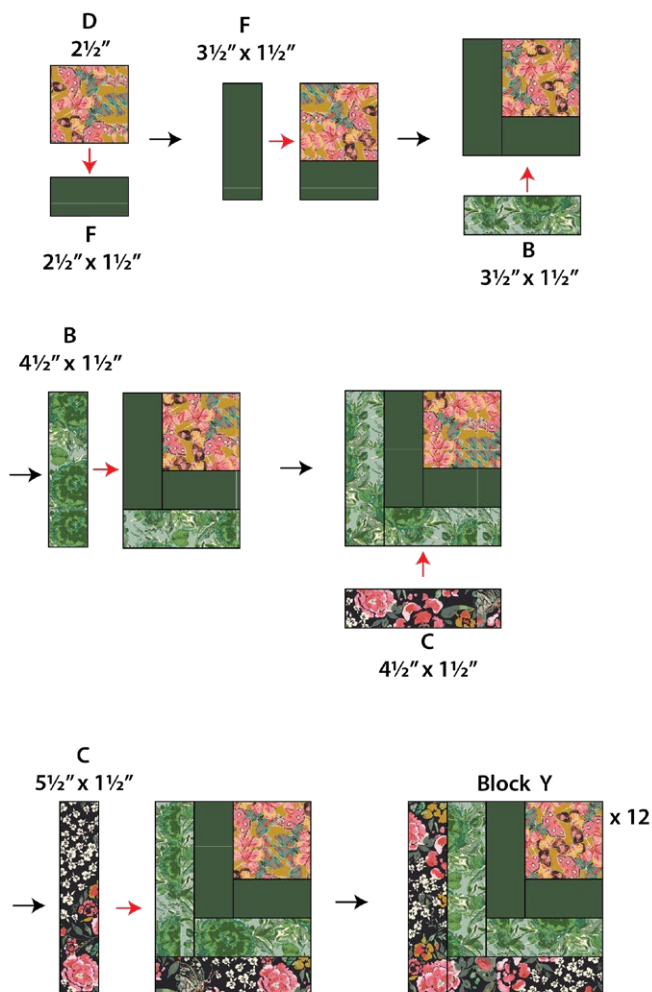


DIAGRAM 1

Construction of Block X:

We will need a total of twelve (12) block X.

For this block we will need:

- One (1) $5\frac{1}{2}$ " x $1\frac{1}{2}$ " strip from fabric **B**.
- One (1) $4\frac{1}{2}$ " x $1\frac{1}{2}$ " strip from fabric **B**.
- One (1) $4\frac{1}{2}$ " x $1\frac{1}{2}$ " strip from fabric **F**.
- One (1) $3\frac{1}{2}$ " x $1\frac{1}{2}$ " rectangle from fabric **F**.
- One (1) $3\frac{1}{2}$ " x $1\frac{1}{2}$ " rectangle from fabric **D**.
- One (1) $2\frac{1}{2}$ " x $1\frac{1}{2}$ " rectangle from fabric **D**.
- One (1) $2\frac{1}{2}$ " square from fabric **E**.

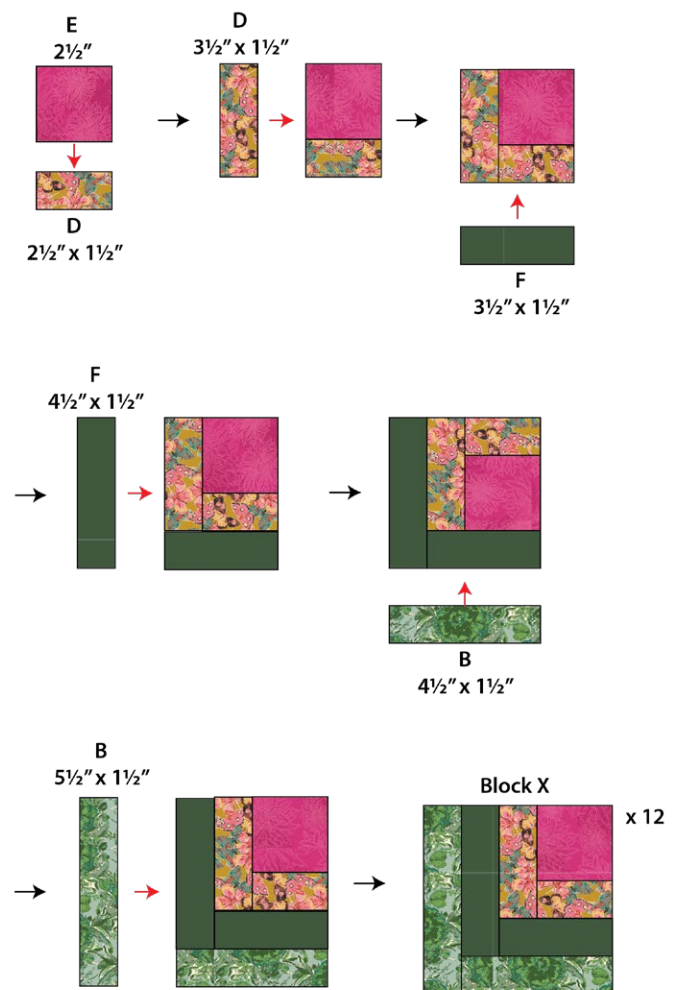


DIAGRAM 2

- Arrange and sew two (2) block **Y** and **X** into two rows. See diagram below for reference. This unit will be called block **Z**.
- Repeat the same steps to get a total of six (6) block **Z**.

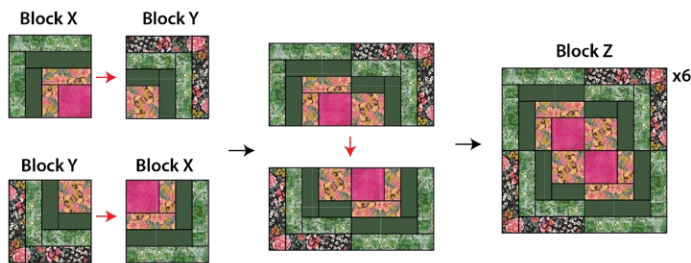


DIAGRAM 3

- Sew one (1) block **Z** and one (1) 10½" square from fabric **A**. Make a total of two identical sections.
- You will use this section in row 1 and 6

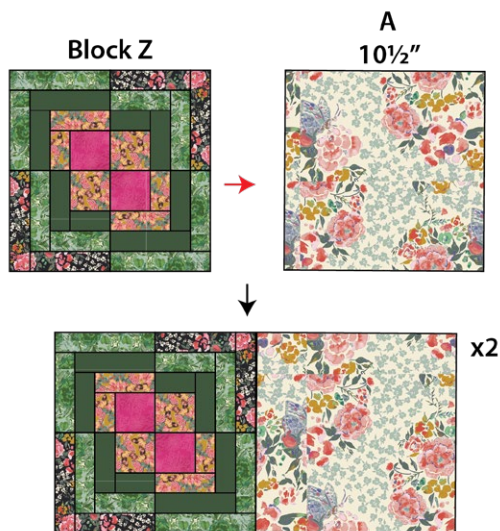


DIAGRAM 4

- Sew two (2) 10½" squares from fabric **A** and one (1) block **Z**. See diagram below for reference.
- Make a total of 4 identical sections. You will use this section from row 2 through 5.

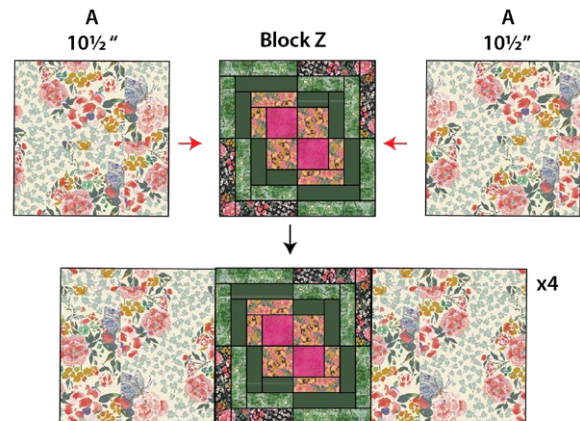


DIAGRAM 5

- Align all sections as shown on diagram below.

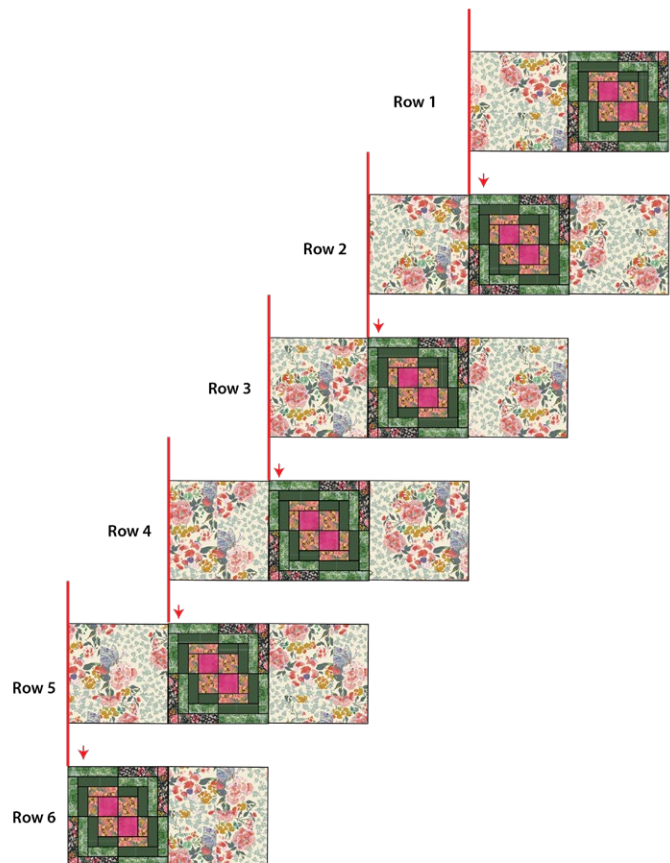


DIAGRAM 6

- Trim to a 70" x 14".



DIAGRAM 7

- Quilt as desired.



DIAGRAM 8

QUILT ASSEMBLY

Sew rights sides together.

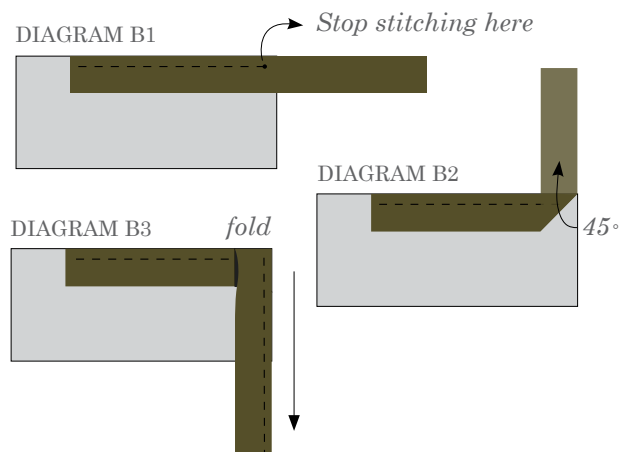
- Place BACKING FABRIC on a large surface wrong side up. Stretch it with masking tape against that surface.
- Place BATTING on top of backing fabric.
- Place TOP on top of the batting with right side facing up. Smooth away wrinkles using your hands.
- Pin all layers together and baste with basting thread, using long stitches. You can also use safety pins to join the layers.
- Machine or hand quilt starting at the center and working towards the corners. Remember that quilting motifs are a matter of personal preference. Have fun choosing yours!
- After you finished, trim excess of any fabric or batting, squaring the quilt to proceed to bind it.

BINDING

Sew rights sides together.

- Cut enough strips $2\frac{1}{2}$ " wide by the width of the fabric **G** to make a final strip 178" long. Start sewing the binding strip in the middle of one of the sides of the quilt, placing the strip right side down and leaving an approximated 5" tail. Sew with $\frac{1}{4}$ " seam allowance (using straight stitch), aligning the strip's raw edge with the quilt top's raw edge.
- Stop stitching $\frac{1}{4}$ " before the edge of the quilt (DIAGRAM B 1). Clip the threads. Remove the quilt from under the machine presser foot. Fold the strip in a motion of 45° and upward, pressing with your fingers (DIAGRAM B2). Hold this fold with your finger, bring the strip down in line with the next edge, making a horizontal fold that aligns with the top edge of the quilt (DIAGRAM B3). Start sewing at $\frac{1}{4}$ " of the border, stitching all the layers. Do the same in the four corners of the quilt.

- Stop stitching before you reach the last 5 or 6 inches. Cut the threads and remove the quilt from under the machine presser foot. Lay the loose ends of the binding flat along the quilt edge, folding the ends back on themselves where they meet. Press them together to form a crease. Using this crease as the stitching line, sew the two open ends of the binding with right sides together (you can help yourself marking with a pencil if the crease is difficult to see).
- Trim seam to $\frac{1}{4}$ " and press open. Complete the sewing. Turn binding to back of the quilt, turn raw edge inside and stitch by hand using blind stitch.



- If you are using our 2.5 edition (binding fabric), click or scan this QR code to see a tutorial on how to use this specialty fabric.



XXXXXXXXXXXXXXXXXXXXXXXXXXXXXXXXXXXX

*Congratulations
& enjoy*

XXXXXXXXXXXXXXXXXXXXXXXXXXXXXXXXXXXX



artgalleryfabrics.com

NOTE: While all possible care has been taken to ensure the accuracy of this pattern, We are not responsible for printing errors or the way in which individual work varies.

Please read instructions carefully before starting the construction of this quilt. If desired, wash and iron your fabrics before starting to cut.

© 2024 Courtesy of Art Gallery Quilts LLC. All Rights Reserved.