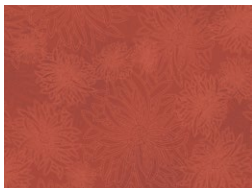


ENCANTO

QUILT DESIGNED BY *AGFstudio*

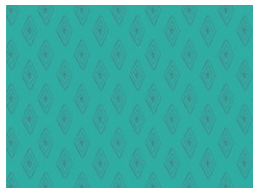
Land of ENCHANTMENT

FABRICS DESIGNED BY BECCA PLYMALE



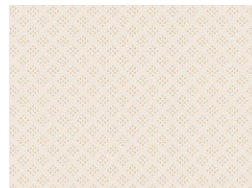
Fabric A

FE551
VICTORIAN BRICK



Fabric B

LEN75710
ANCIENT ECHOES



Fabric C

LEN75701
WHITE SANDS



Fabric D

LEN75706
DESERT SPROUTS



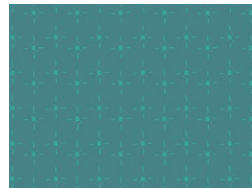
Fabric E

LEN75707
WOVEN ESSENCE



Fabric F

LEN75702
TERRA IMPRINTS



Fabric G

LEN75711
LUMINARIA TURQUOISE



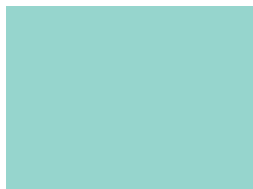
Fabric H

LEN75703
CHARMING PUEBLO



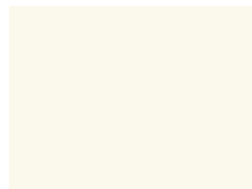
Fabric I

FE504
SAND



Fabric J

PE403
FRESH WATER



Fabric K

PE408
WHITE LINEN



Fabric L (BINDING)

BINLEN75
SOUTHWEST BOUND



BACKING

LEN75700
BEYOND THE CLOUDS



ENCANTO

FINISHED SIZE | 64" x 73"

Please read all instructions thoroughly before beginning.

FABRIC REQUIREMENTS

Fabric A	FE551	$\frac{3}{8}$ yd.
Fabric B	LEN75710	1 $\frac{1}{4}$ yd.
Fabric C	LEN75701	$\frac{5}{8}$ yd.
Fabric D	LEN75706	$\frac{7}{8}$ yd.
Fabric E	LEN75707	$\frac{5}{8}$ yd.
Fabric F	LEN75702	$\frac{7}{8}$ yd.
Fabric G	LEN75711	$\frac{7}{8}$ yd.
Fabric H	LEN75703	$\frac{3}{8}$ yd.
Fabric I	FE504	$\frac{3}{8}$ yd.
Fabric J	PE403	$\frac{5}{8}$ yd.
Fabric K	PE408	$\frac{5}{8}$ yd.
Fabric L	BINLEN75	$\frac{3}{4}$ yd.

BACKING FABRIC

LEN75700 4 $\frac{1}{2}$ yds *(Suggested)*

BINDING FABRIC

Fabric **L** BINLEN75 $\frac{3}{4}$ yd. *(Included)*

CUTTING DIRECTIONS

Iron your fabrics thoroughly before cutting them. $\frac{1}{4}$ " seam allowances are included. WOF means width of fabric.

Fabric A

- One (1) 9 $\frac{3}{4}$ " x WOF strip.

Sub-cut

- Four (4) 9 $\frac{3}{4}$ " squares.

Fabric B

- Three (3) 9 $\frac{3}{4}$ " x WOF strips.

Sub-cut

- Ten (10) 9 $\frac{3}{4}$ " squares.

- One (1) 8 $\frac{1}{2}$ " x WOF strip.

Sub-cut

- Four (4) 8 $\frac{1}{2}$ " squares.

- One (1) 4 $\frac{1}{2}$ " x WOF strip.

Sub-cut

- Eight (8) 4 $\frac{1}{2}$ " squares.

Fabric C

- Two (2) 9 $\frac{3}{4}$ " x WOF strips.

Sub-cut

- Eight (8) 9 $\frac{3}{4}$ " squares.

Fabric D

- Three (3) 9 $\frac{3}{4}$ " x WOF strips.

Sub-cut

- Eleven (11) 9 $\frac{3}{4}$ " squares.

Fabric E

- One (1) 16 $\frac{1}{2}$ " square.

- One (1) 9 $\frac{3}{4}$ " x WOF strip.

Sub-cut

- Four (4) 9 $\frac{3}{4}$ " squares.

Fabric F

- Three (3) 9 $\frac{3}{4}$ " x WOF strips.

Sub-cut

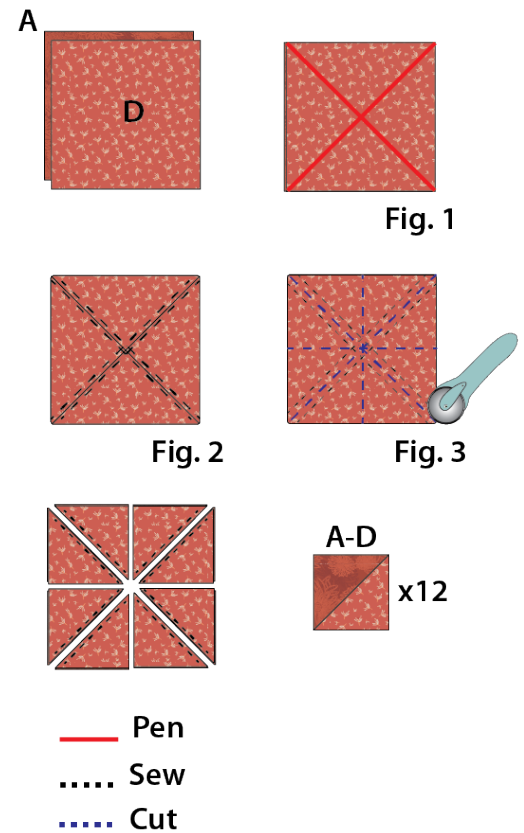
- Ten (10) 9 $\frac{3}{4}$ " squares.

CONSTRUCTION

Sew all rights sides together with ¼" seam allowance.

Magic 8 Method

- Start by placing one (1) 9¾" square from fabrics **A** and **D** right sides together. (Fig 1)
- Mark a diagonal line across both diagonals on the wrong side of the top fabric square. (Fig 2)
- Sew a **SCANT** ¼" seam on both sides of the marked diagonal lines. (Fig 3)
- Using your rotary cutter or scissors cut a horizontal line, vertical line, and on both drawn diagonal lines. (Fig 3)
- Open the blocks outward and lightly press. Be very careful to only press up and down, NOT back and forth so as not to stretch them. Your seam should be pressed (both layers) toward the darker color.
- Trim each Half Square Triangle unit to a 4½" square.



Fabric G

- Three (3) 9¾" x WOF strips.

Sub-cut

- Ten (10) 9¾" squares.

Fabric H

- One (1) 9¾" x WOF strip.

Sub-cut

- Three (3) 9¾" squares.

Fabric I

- One (1) 9¾" x WOF strip.

Sub-cut

- Three (3) 9¾" squares.

Fabric J

- Two (2) 9¾" x WOF strips.

Sub-cut

- Seven (7) 9¾" squares.

Fabric K

- Two (2) 9¾" x WOF strips.

Sub-cut

- Seven (7) 9¾" squares.

Fabric L (BINDING)

- Seven (7) WOF X 2½" strips.

Repeat the Magic 8 method with all the $9\frac{3}{4}$ " squares from required fabrics, to make the HST's units in diagram 2.

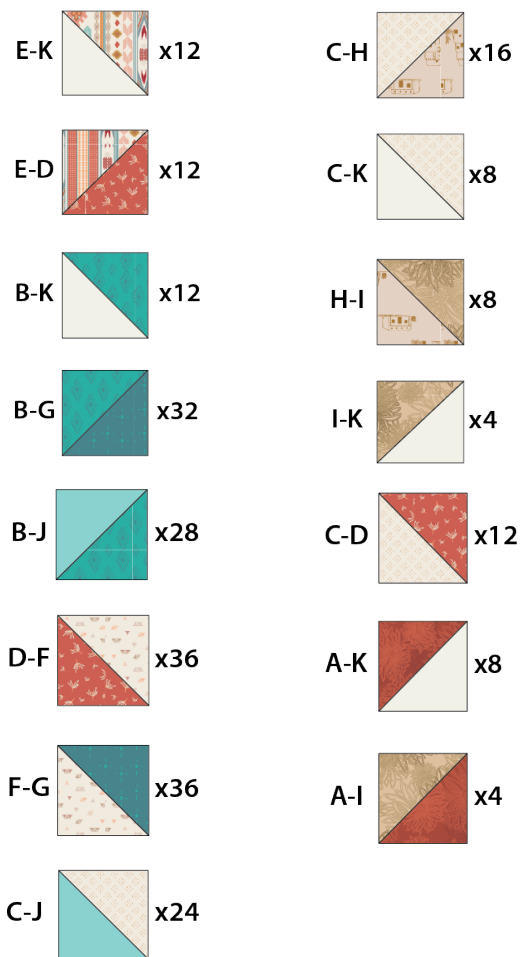


DIAGRAM 2

Block 1

Arrange the HST's units in the following order to make block 1. See diagram 3.

- Row 1: CJ - BJ - BG - FG - DF - CD - CK -EK
- Row 2: CH - CJ - BJ - BG - FG -DF - AD - AI
- Row 3: HI - CH - CJ - BJ - BG - FG - DF -CD
- Row 4: HI - CH - CJ - BJ - BG - FG - DF - ED
- Row 5: CH - CJ - BJ - BG - FG - DF - AD - AK
- Row 6: CJ - BJ - BG - FG - DF - CD - CK - IK
- Row 7: BJ - BG - FG - DF - AD - AK - BK - B

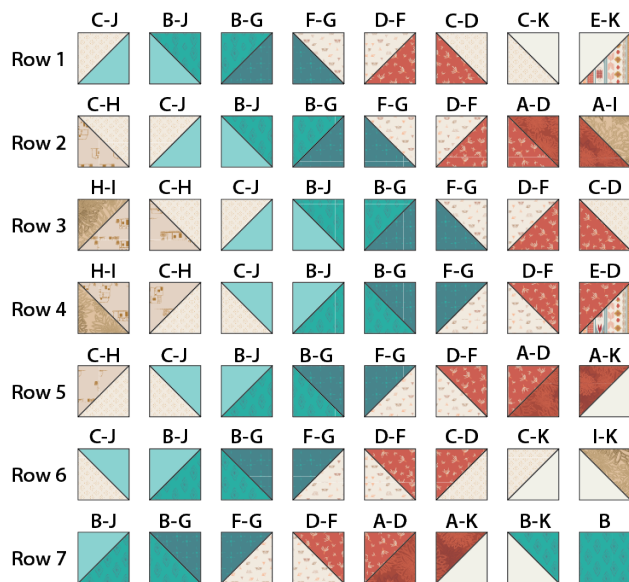


DIAGRAM 3

- Block 1 should measure around $32\frac{1}{2}$ " x $28\frac{1}{2}$ ".
- Make a total of two (2) block 1.

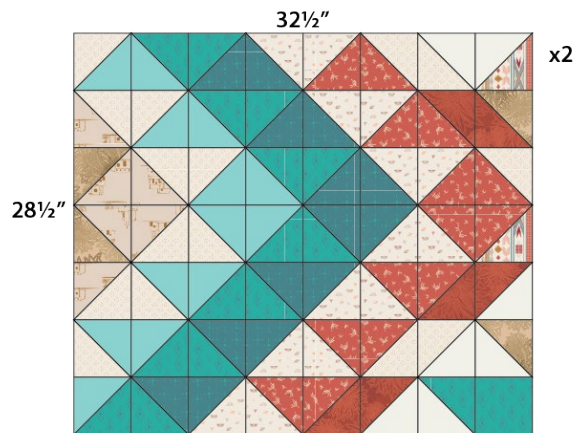


DIAGRAM 4

Block 2

Arrange the units in the following order to make Block 2. See diagram 5.

- Row 1: EK- CK - CD - DF - FG - BG - BJ - CJ
- Row 2: AI -AD - DF - FG - BG - BJ - CJ - CH
- Row 3: CD - DF - FG - BG - BJ - CJ - CH - HI
- Row 4: ED - DF - FG - BG - BJ - CJ - CH - HI
- Row 5: AK - AD - DF - FG - BG - BJ - CJ - CH
- Row 6: IK - CK - CD - DF - FG - BG - BJ - CJ
- Row 7: B - BK - AK - AD - DF - FG - BG - BJ

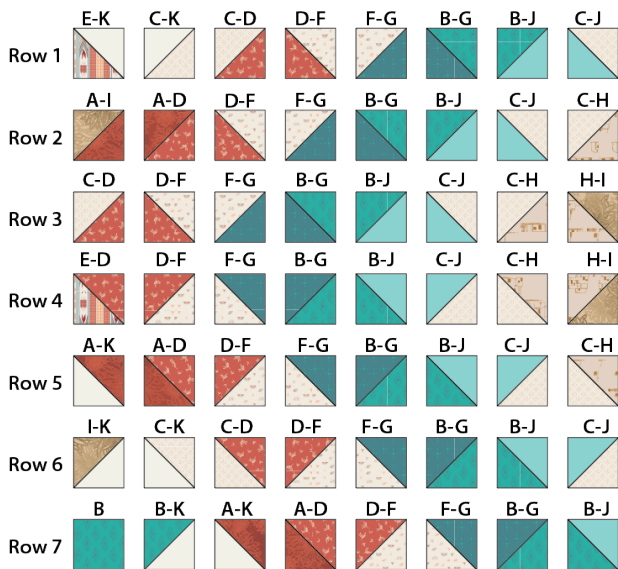


DIAGRAM 5

- Block 2 should measure around $32\frac{1}{2}'' \times 28\frac{1}{2}''$.
- Make a total of two (2) block 2.

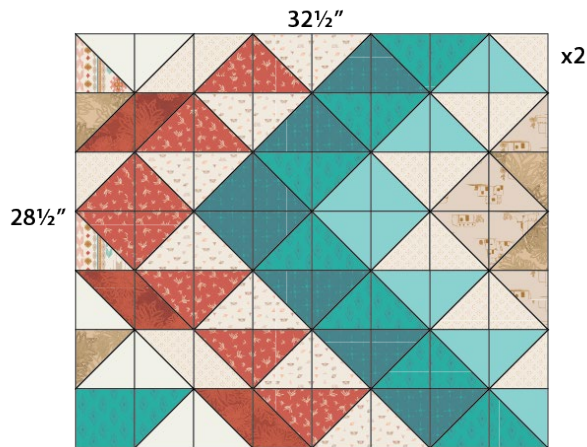


DIAGRAM 6

Block 3

Arrange the units in the following order to make Block 3. See diagram 7.

- Row 1: BG - FG - DF - ED - EK - BK
- Row 2: FG - DF - ED - EK - BK - B
- Row 3: FG - DF - ED - EK - BK - B
- Row 4: BG - FG - DF - ED - EK - BK

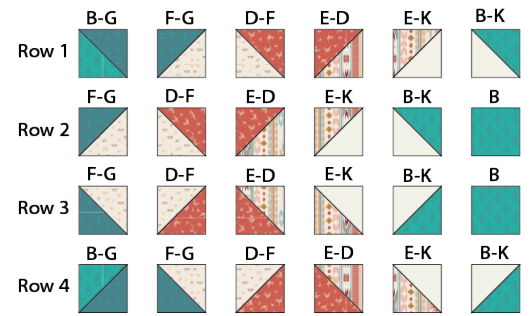


DIAGRAM 7

- Block 3 should measure around $24\frac{1}{2}'' \times 16\frac{1}{2}''$.
- Make a total of two (2) block 3.

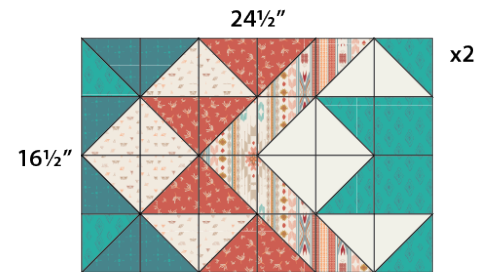


DIAGRAM 8

Center Block

- Place one (1) $8\frac{1}{2}''$ square from fabric **B** to the top left corner of one (1) $16\frac{1}{2}''$ square fabric.
- Sew diagonally on the $8\frac{1}{2}''$ square from fabric **B**, and trim $\frac{1}{4}''$ away from seam allowance, press open.
- Place another $8\frac{1}{2}''$ square from fabric **B** to the top right corner of the same $16\frac{1}{2}''$ fabric **E** square.
- Sew diagonally, trim $\frac{1}{4}''$ away from seam allowance and press open.
- Repeat the same steps for the bottom corners. See diagram 9 for reference.

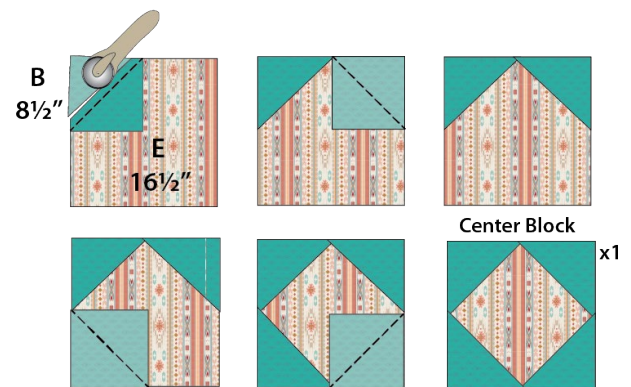


DIAGRAM 9

- Take two (2) block 1, block 2, block 3, and one (1) 16½" center block.
- Arrange them into three rows following the diagram below.
- Please note block 1, 2 and 3 placement and orientation for each row.

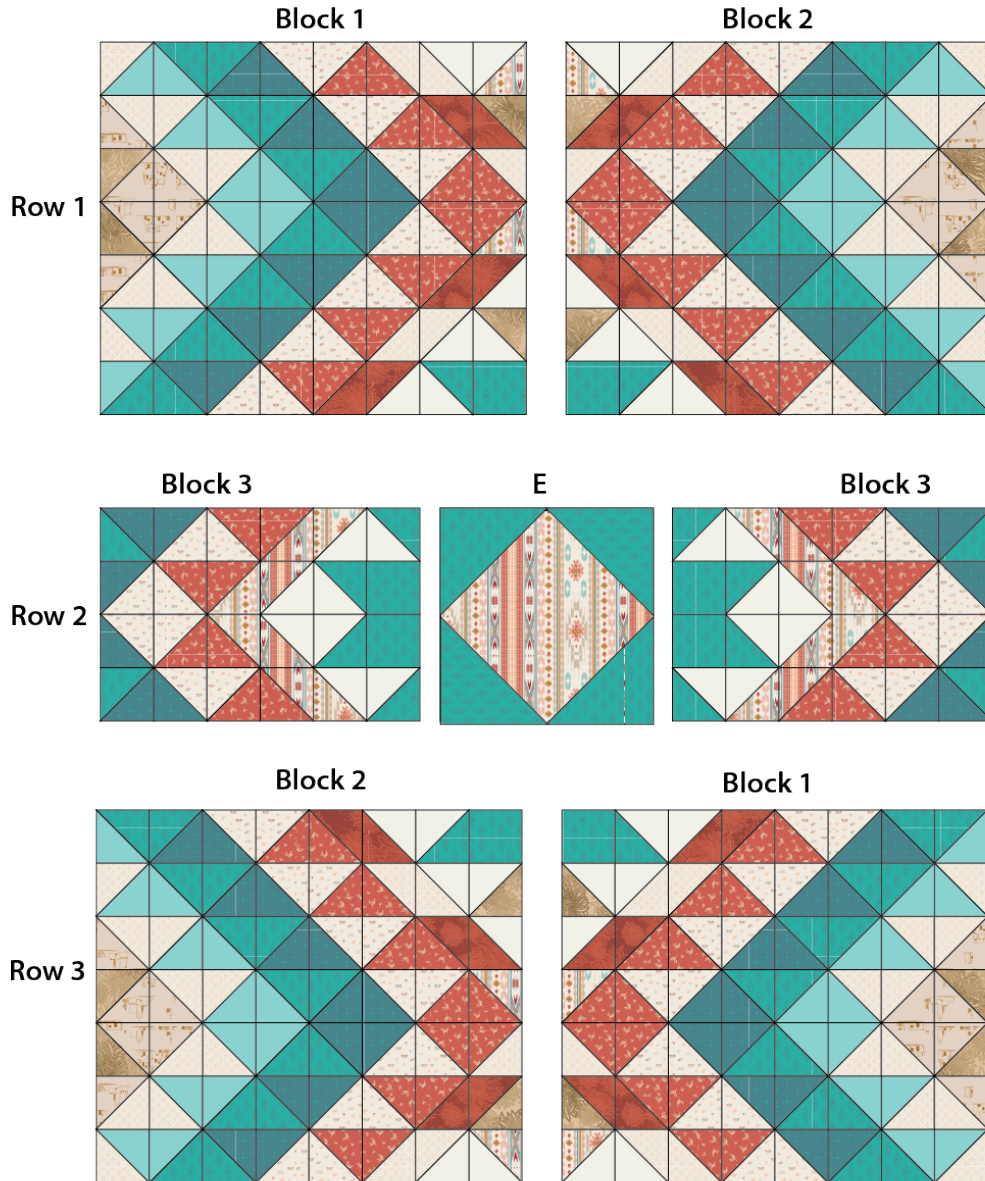


DIAGRAM 10

QUILT TOP



DIAGRAM 11

QUILT ASSEMBLY

Sew rights sides together.

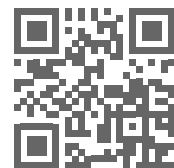
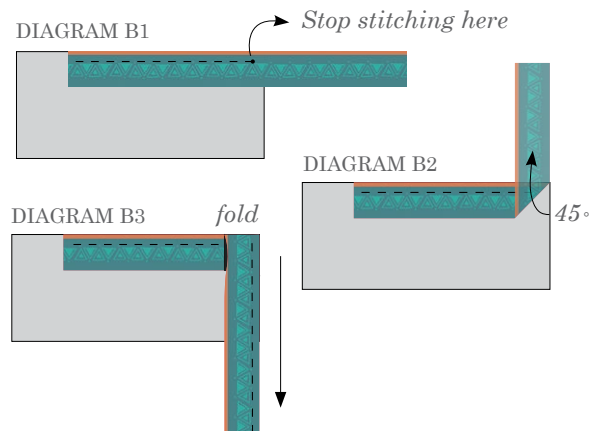
- Place BACKING FABRIC on a large surface wrong side up. Stretch it with masking tape against that surface.
- Place BATTING on top of backing fabric.
- Place TOP on top of the batting with right side facing up. Smooth away wrinkles using your hands.
- Pin all layers together and baste with basting thread, using long stitches. You can also use safety pins to join the layers.
- Machine or hand quilt starting at the center and working towards the corners. Remember that quilting motifs are a matter of personal preference. Have fun choosing yours!
- After you finished, trim excess of any fabric or batting, squaring the quilt to proceed to bind it.

BINDING

Sew rights sides together.

- Cut enough strips 2½" wide by the width of the fabric L to make a final strip 284" long. Start sewing the binding strip in the middle of one of the sides of the quilt, placing the strip right side down and leaving an approximated 5" tail. Sew with ¼" seam allowance (using straight stitch), aligning the strip's raw edge with the quilt top's raw edge.

- Stop stitching ¼" before the edge of the quilt (DIAGRAM B 1). Clip the threads. Remove the quilt from under the machine presser foot. Fold the strip in a motion of 45° and upward, pressing with your fingers (DIAGRAM B2). Hold this fold with your finger, bring the strip down in line with the next edge, making a horizontal fold that aligns with the top edge of the quilt (DIAGRAM B3). Start sewing at ¼" of the border, stitching all the layers. Do the same in the four corners of the quilt.
- Stop stitching before you reach the last 5 or 6 inches. Cut the threads and remove the quilt from under the machine presser foot. Lay the loose ends of the binding flat along the quilt edge, folding the ends back on themselves where they meet. Press them together to form a crease. Using this crease as the stitching line, sew the two open ends of the binding with right sides together (you can help yourself marking with a pencil if the crease is difficult to see).
- Trim seam to ¼" and press open. Complete the sewing. Turn binding to back of the quilt, turn raw edge inside and stitch by hand using blind stitch.
- If you are using our 2.5 Edition Binding Fabric, click or scan this QR code to see a tutorial on how to use this specialty fabric.



XXXXXXXXXXXXXXXXXXXXXXXXXXXXXXXX

Congratulations & enjoy

XXXXXXXXXXXXXXXXXXXXXXXXXXXXXXXX



artgalleryfabrics.com

NOTE: While all possible care has been taken to ensure the accuracy of this pattern, We are not responsible for printing errors or the way in which individual work varies.

Please read instructions carefully before starting the construction of this quilt. If desired, wash and iron your fabrics before starting to cut.

© 2024 Courtesy of Art Gallery Quilts LLC. All Rights Reserved.