

Some of the projects featured in our lookbooks link back to patterns that were originally created in the past with different fabric selections. This project sheet will serve you as a quick reference to find and replace with the specific fabrics we used for this project. Happy sewing!

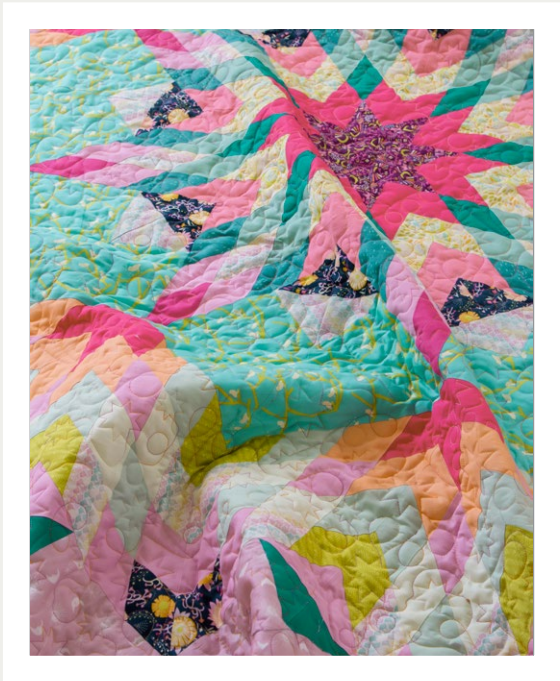
# SUNRISE SUNSET

FABRICS DESIGNED BY JESSICA SWIFT

FABRIC REQUIREMENTS

- |   |   |   |   |
|---|---|---|---|
|    | <b>FABRIC A</b><br>SST85110<br>LIVELY LUMINOUS    |    | <b>FABRIC K</b><br>SST85108<br>BEHIND THE VEIL          |
|   | <b>FABRIC B</b><br>PE426<br>APRICOT CREPE         |   | <b>FABRIC L</b><br>PE443<br>SWEET MINT                  |
|  | <b>FABRIC C</b><br>PE439<br>RASPBERRY ROSE        |  | <b>FABRIC M</b><br>SST85106<br>DAWN DUSK RHYTHM         |
|  | <b>FABRIC D</b><br>PE559<br>COSMOS                |  | <b>FABRIC N</b><br>PE526<br>SECRET LAGOON               |
|  | <b>FABRIC E</b><br>SST85109<br>FLORA MAGICA       |  | <b>FABRIC O</b><br>PE464<br>WARM WAVE                   |
|  | <b>FABRIC F</b><br>PE475<br>VERY BERRY            |  | <b>FABRIC P</b><br>SST85103<br>GREETING CHIRPS          |
|  | <b>FABRIC G</b><br>PE474<br>SWEET PINK            |  | <b>FABRIC Q</b><br>SST85101<br>ETERNAL DRIFTING         |
|  | <b>FABRIC H</b><br>SST85102<br>MIRACLE MORNING    |  | <b>FABRIC R</b><br>PE438<br>CORAL REEF                  |
|  | <b>FABRIC I</b><br>SST85107<br>MIDNIGHT MOONLIGHT |  | <b>FABRIC S (BINDING)</b><br>BINSST85<br>GOOD DAY BOUND |
|  | <b>FABRIC J</b><br>PE412<br>TENDER GREEN          |  | <b>BACKING</b><br>SST85100<br>RISE AND SHINE            |

PROJECT INFO



PROJECT NAME: ROSETTE

DESIGNED BY: AGF STUDIO

FINISHED SIZE: 96" x 96"

[CLICK HERE FOR PATTERN](#)

FREE PATTERN