

Some of the projects featured in our lookbooks link back to patterns that were originally created in the past with different fabric selections. This project sheet will serve you as a quick reference to find and replace with the specific fabrics we used for this project. Happy sewing!

coyote hill



FABRICS DESIGNED BY KATIE O'SHEA



FABRIC A
COH18907
HILLSIDE JOURNEY



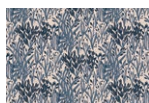
FABRIC B
COH18904
BEETLE PARADE
SUN



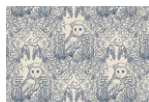
FABRIC C
COH18900
WILD WOODBLOCK
NIGHT



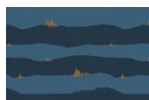
FABRIC D
COH18903
MOONLIT GUARDIAN
SEPIA



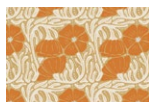
FABRIC E
COH28905
MEADOW MELODY BAY



FABRIC F
COH28903
MOONLIT GUARDIAN
SKY



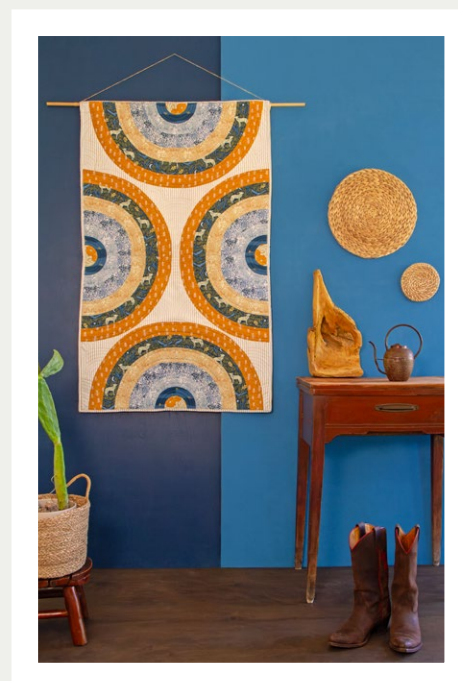
FABRIC G
COH18906
TORN HILLS DUSK



FABRIC H
COH18902
POPPY PATCH
AUTUMN

FABRIC REQUIREMENTS

PROJECT INFO



PROJECT NAME: DUAL MINDS

DESIGNED BY: AGF STUDIO

FINISHED SIZE: 30" x 50"

[CLICK HERE FOR PATTERN](#)

FREE PATTERN