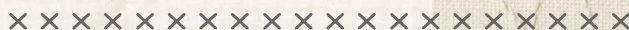
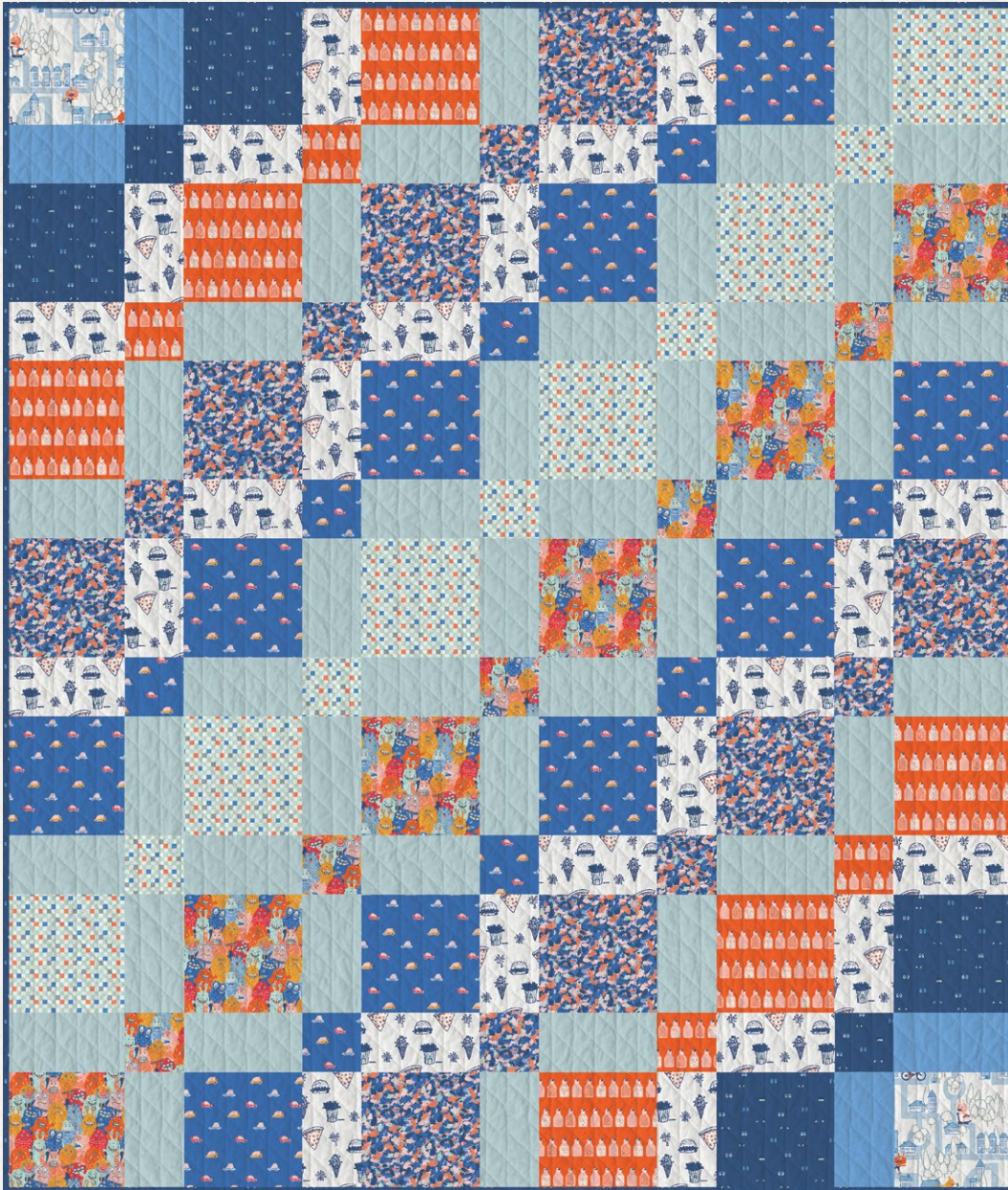


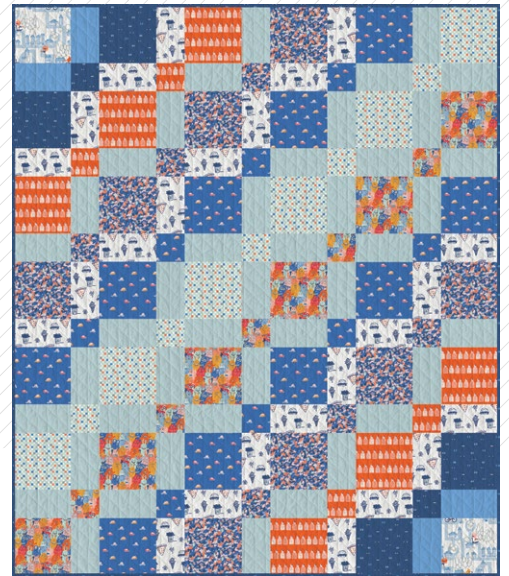


# LET'S PLAY



# LET'S PLAY

QUILT DESIGNED BY *AGFstudio*

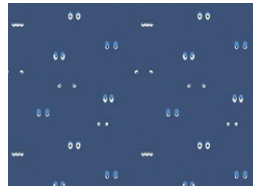


# Monsterville

FABRICS DESIGNED BY AGF STUDIO



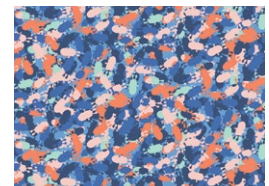
**Fabric A**  
MVL44406  
MONSTROPOLIS



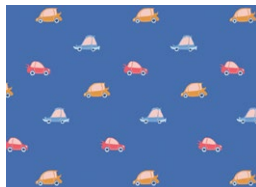
**Fabric B**  
MVL44407  
NIGHT STARES



**Fabric C**  
MVL44409  
EYES & FLIES DELIGHTS



**Fabric D**  
MVL44402  
FREAKY FUSION



**Fabric E**  
MVL44405  
THRILL RIDE NIGHT



**Fabric F**  
MVL44410  
SQUARED PORTALS



**Fabric G**  
MVL44400  
MONSTER PARADE



**Fabric H**  
PE 477  
AERO BLUE



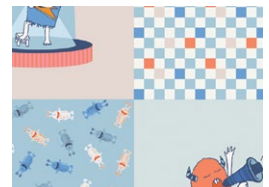
**Fabric I**  
MVL44408  
MONSTROUS MUNCHIES



**Fabric J**  
PE 496  
CRYSTALLINE



**Fabric K (BINDING)**  
BIN25114  
STITCHED AND BOUND



**BACKING**  
MVL44411  
FRIENDLY FIEND FEST



# LET'S PLAY

FINISHED SIZE | 68" x 80"

## FABRIC REQUIREMENTS

|          |          |        |
|----------|----------|--------|
| Fabric A | MVL44406 | ¼ yd.  |
| Fabric B | MVL44407 | ⅜ yd.  |
| Fabric C | MVL44409 | ½ yd.  |
| Fabric D | MVL44402 | ⅝ yd.  |
| Fabric E | MVL44405 | ⅞ yd.  |
| Fabric F | MVL44410 | ½ yd.  |
| Fabric G | MVL44400 | ½ yd.  |
| Fabric H | PE 477   | ¼ yd.  |
| Fabric I | MVL44408 | ⅞ yd.  |
| Fabric J | PE 496   | 1½ yd. |
| Fabric K | BIN25114 | ⅝ yd.  |

### BACKING FABRIC

MVL44411 Panel 5⅜ yds (Suggested)

Other fabric 5¼ yds (Suggested)

### BINDING FABRIC

Fabric K BIN25114 (Included)

## CUTTING DIAGRAM

Before you start cutting your fabrics, be sure to cut fabric I as in the diagram below.

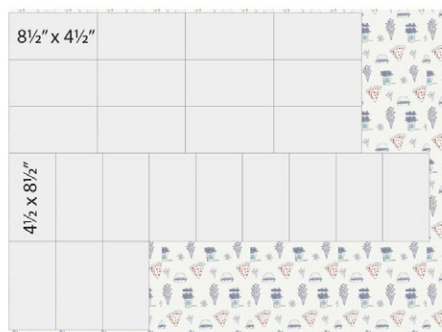


DIAGRAM 1

## CUTTING DIRECTIONS

¼" seam allowances are included.  
WOF means width of fabric.

### Fabric A

- Two (2) 8½" squares.

### Fabric B

- Four (4) 8½" squares.
- Two (2) 4½" squares.

### Fabric C

- Six (6) 8½" squares.
- Four (4) 4½" squares.

### Fabric D

- Eight (8) 8½" squares.
- Six (6) 4½" squares.

### Fabric E

- Ten (10) 8½" squares.
- Eight (8) 4½" squares.

### Fabric F

- Six (6) 8½" squares.
- Five (5) 4½" squares.

### Fabric G

- Six (6) 8½" squares.
- Five (5) 4½" squares.

### Fabric H

- Four (4) 8½" x 4½" rectangles.

### Fabric I

(Directional Fabric see diagram 1)

- Twelve (12) 8½" x 4½" rectangles.
- Twelve (12) 4½" x 8½" rectangles.

### Fabric J

- Forty three (43) 8½" x 4½" rectangles.

### Fabric K

- Eight (8) WOF x 2½" strips. (Binding)

## CONSTRUCTION

Sew all rights sides together with  $\frac{1}{4}$ " seam allowance.

- There are thirteen (13) different rows in this quilt.
- Start constructing the rows from #1 to #13 following the diagrams below.

### ROW #1:

- Take one (1)  $8\frac{1}{2}$ " square from fabrics **A, B, C, D, E** & **F**, one (1)  $8\frac{1}{2}$ " x  $4\frac{1}{2}$ " rectangle from fabric **H** and two (2)  $8\frac{1}{2}$ " x  $4\frac{1}{2}$ " rectangles from fabrics **I** & **J**.
- Attach them in the order **A-H-B-I-C-J-D-I-E-J-F**.
- Press and set aside.

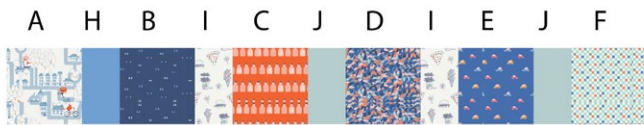


DIAGRAM 2

### ROW #2:

- Take one (1)  $4\frac{1}{2}$ " square from fabrics **B, C, D, E** & **F**, one (1)  $8\frac{1}{2}$ " x  $4\frac{1}{2}$ " rectangle from fabric **H**, two (2)  $8\frac{1}{2}$ " x  $4\frac{1}{2}$ " rectangles from fabric **I** and three (3)  $8\frac{1}{2}$ " x  $4\frac{1}{2}$ " rectangles from fabric **J**.
- Attach them in the order **H-B-I-C-J-D-I-E-J-F-J**.
- Press and set aside.



DIAGRAM 3

### ROW #3:

- Take one (1)  $8\frac{1}{2}$ " square from fabrics **B, C, D, F** & **G**, two (2)  $8\frac{1}{2}$ " x  $4\frac{1}{2}$ " rectangles from fabric **I** and three (3)  $8\frac{1}{2}$ " x  $4\frac{1}{2}$ " rectangles from fabric **J**.
- Attach them in the order **B-I-C-J-D-I-E-J-F-J-G**.
- Press and set aside.



DIAGRAM 4

### ROW #4:

- Take one (1)  $4\frac{1}{2}$ " square from fabrics **C, D, E, F** & **G**, two (2)  $8\frac{1}{2}$ " x  $4\frac{1}{2}$ " rectangles from fabric **I** and four (4)  $8\frac{1}{2}$ " x  $4\frac{1}{2}$ " rectangles from fabric **J**.
- Attach them in the order **I-C-J-D-I-E-J-F-J-G-J**.
- Press and set aside.



DIAGRAM 5

### ROW #5:

- Take one (1)  $8\frac{1}{2}$ " square from fabrics **C, D, F** & **G**, two (2)  $8\frac{1}{2}$ " squares from fabric **E**, one (1)  $8\frac{1}{2}$ " x  $4\frac{1}{2}$ " rectangle from fabric **I** and four (4)  $8\frac{1}{2}$ " x  $4\frac{1}{2}$ " rectangles from fabric **J**.
- Attach them in the order **C-J-D-I-E-J-F-J-G-J-E**.
- Press and set aside.



DIAGRAM 6

### ROW #6:

- Take one (1)  $4\frac{1}{2}$ " square from fabrics **D, F** & **G**, two (2)  $4\frac{1}{2}$ " squares from fabric **E**, two (2)  $8\frac{1}{2}$ " x  $4\frac{1}{2}$ " rectangles from fabric **I** and four (4)  $8\frac{1}{2}$ " x  $4\frac{1}{2}$ " rectangles from fabric **J**.
- Attach them in the order **J-D-I-E-J-F-J-G-J-E-I**.
- Press and set aside.

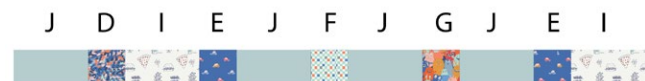


DIAGRAM 7

### ROW #7:

- Take one (1)  $8\frac{1}{2}$ " square from fabrics **F** & **G**, two (2)  $8\frac{1}{2}$ " squares from fabrics **D** & **E**, two (2)  $8\frac{1}{2}$ " x  $4\frac{1}{2}$ " rectangles from fabric **I** and three (3)  $8\frac{1}{2}$ " x  $4\frac{1}{2}$ " rectangles from fabric **J**.
- Attach them in the order **D-I-E-J-F-J-G-J-E-I-D**.
- Press and set aside.



DIAGRAM 8

ROW #8:

- Take one (1)  $4\frac{1}{2}$ " square from fabrics **D, F & G**, two (2)  $4\frac{1}{2}$ " squares from fabric **E**, two (2)  $8\frac{1}{2}$ " x  $4\frac{1}{2}$ " rectangles from fabric **I** and four (4)  $8\frac{1}{2}$ " x  $4\frac{1}{2}$ " rectangles from fabric **J**.
- Attach them in the order **I-E-J-F-J-G-J-E-I-D-J**.
- Press and set aside.



DIAGRAM 9

ROW #9:

- Take one (1)  $8\frac{1}{2}$ " square from fabrics **C, D, F & G**, two (2)  $8\frac{1}{2}$ " squares from fabric **E**, one (1)  $8\frac{1}{2}$ " x  $4\frac{1}{2}$ " rectangle from fabric **I** and four (4)  $8\frac{1}{2}$ " x  $4\frac{1}{2}$ " rectangles from fabric **J**.
- Attach them in the order **E-J-F-J-G-J-E-I-D-J-C**.
- Press and set aside.

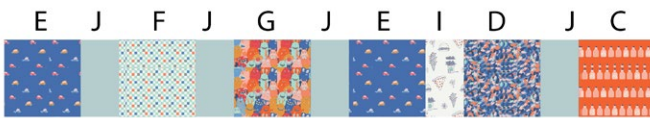


DIAGRAM 10

ROW #10:

- Take one (1)  $4\frac{1}{2}$ " square from fabrics **C, D, F & G**, two (2)  $8\frac{1}{2}$ " x  $4\frac{1}{2}$ " rectangles from fabric **I** and four (4)  $8\frac{1}{2}$ " x  $4\frac{1}{2}$ " rectangles from fabric **J**.
- Attach them in the order **J-F-J-G-J-E-I-D-J-C-I**.
- Press and set aside.



DIAGRAM 11



ROW #11:

- Take one (1)  $8\frac{1}{2}$ " square from fabrics **B, C, D, F & G**, two (2)  $8\frac{1}{2}$ " x  $4\frac{1}{2}$ " rectangles from fabric **I** and three (3)  $8\frac{1}{2}$ " x  $4\frac{1}{2}$ " rectangles from fabric **J**.
- Attach them in the order **F-J-G-J-E-I-D-J-C-I-B**.
- Press and set aside.



DIAGRAM 12

ROW #12:

- Take one (1)  $4\frac{1}{2}$ " square from fabrics **B, C, D, E & G**, one (1)  $8\frac{1}{2}$ " x  $4\frac{1}{2}$ " rectangle from fabric **H**, two (2)  $8\frac{1}{2}$ " x  $4\frac{1}{2}$ " rectangles from fabric **I** and three (3)  $8\frac{1}{2}$ " x  $4\frac{1}{2}$ " rectangles from fabric **J**.
- Attach them in the order **J-G-J-E-I-D-J-C-I-B-H**.
- Press and set aside.



DIAGRAM 13

ROW #13:

- Take one (1)  $8\frac{1}{2}$ " square from fabrics **A, B, C, D, E & G**, one (1)  $8\frac{1}{2}$ " x  $4\frac{1}{2}$ " rectangle from fabric **H** and two (2)  $8\frac{1}{2}$ " x  $4\frac{1}{2}$ " rectangles from fabrics **I & J**.
- Attach them in the order **G-J-E-I-D-J-C-I-B-H-A**.
- Press and set aside.



DIAGRAM 14

**QUILT TOP**

- Attach rows 1- 13
- Refer to diagram below for reference.

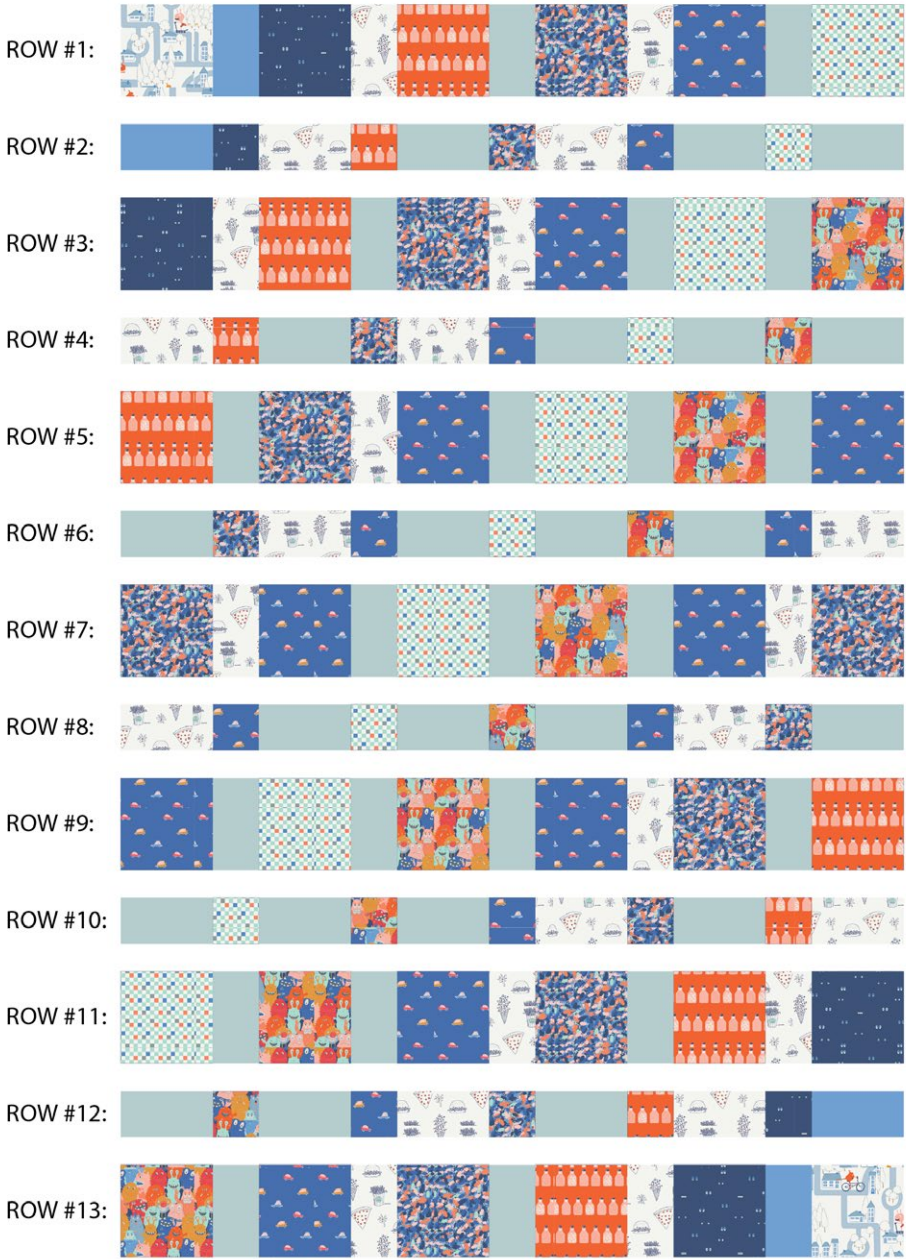


DIAGRAM 15

# PANEL AS BACKING

- If you choose to use the Monsterville panel as backing, make sure to move down one squares in the top, so the monster pattern don't repeat. See figure 1.
- Place your quilt top and your batting centered to the sides and bottom of your backing, See figure 2.

Fig. 1

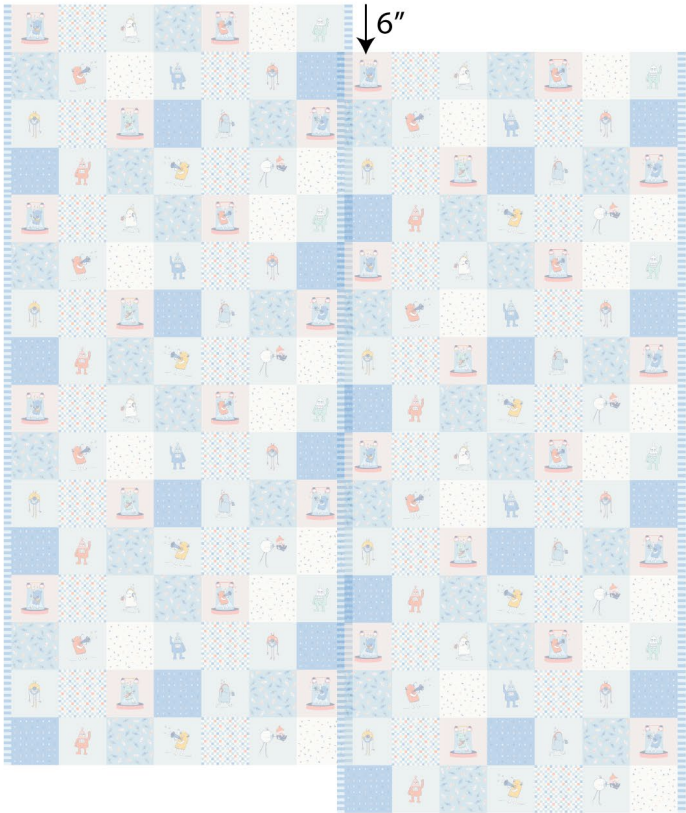


Fig. 2

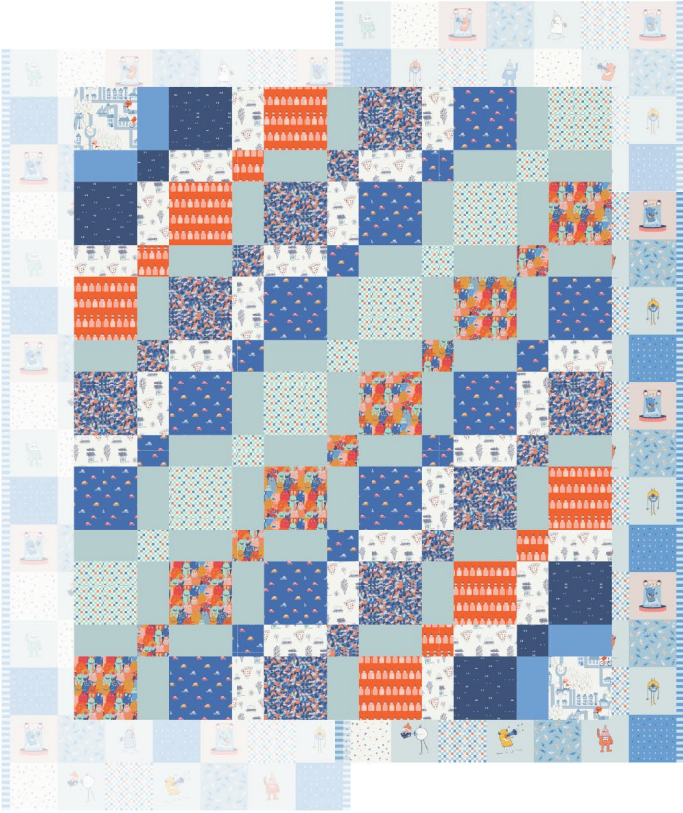


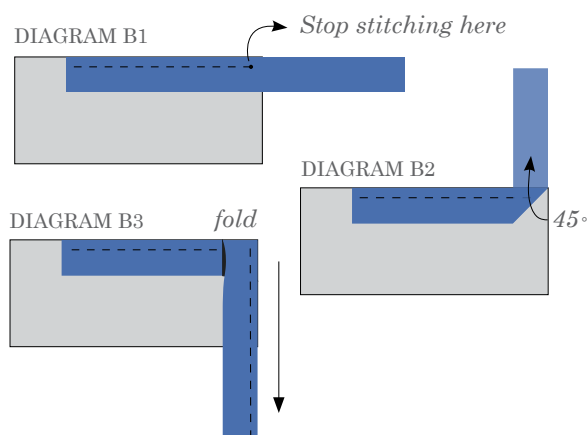
DIAGRAM 16

## QUILT ASSEMBLY

*Sew rights sides together.*

- Place BACKING FABRIC on a large surface wrong side up. Stretch it with masking tape against that surface.
- Place BATTING on top of backing fabric.
- Place TOP on top of the batting with right side facing up. Smooth away wrinkles using your hands.
- Pin all layers together and baste with basting thread, using long stitches. You can also use safety pins to join the layers.
- Machine or hand quilt starting at the center and working towards the corners. Remember that quilting motifs are a matter of personal preference. Have fun choosing yours!
- After you finished, trim excess of any fabric or batting, squaring the quilt to proceed to bind it.

- Stop stitching before you reach the last 5 or 6 inches. Cut the threads and remove the quilt from under the machine presser foot. Lay the loose ends of the binding flat along the quilt edge, folding the ends back on themselves where they meet. Press them together to form a crease. Using this crease as the stitching line, sew the two open ends of the binding with right sides together (you can help yourself marking with a pencil if the crease is difficult to see).
- Trim seam to  $\frac{1}{4}$ " and press open. Complete the sewing. Turn binding to back of the quilt, turn raw edge inside and stitch by hand using blind stitch.

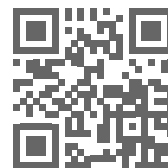


## BINDING

*Sew rights sides together.*

- Cut enough strips  $2\frac{1}{2}$ " wide by the width of the fabric **K** to make a final strip 306" long and fold the strip length-wise. Start sewing the binding strip in the middle of one side of the quilt leaving an approximated 5" tail. Sew with  $\frac{1}{4}$ " seam allowance (using straight stitch), aligning the strip's raw edge with the quilt top's raw edge.
- Stop stitching  $\frac{1}{4}$ " before the edge of the quilt (DIAGRAM B 1). Clip the threads. Remove the quilt from under the machine presser foot. Fold the strip in a motion of  $45^\circ$  and upward, pressing with your fingers (DIAGRAM B2). Hold this fold with your finger, bring the strip down in line with the next edge, making a horizontal fold that aligns with the top edge of the quilt (DIAGRAM B3). Start sewing at  $\frac{1}{4}$ " of the border, stitching all the layers. Do the same in the four corners of the quilt.

- If you are using our 2.5 edition (binding fabric), click or scan this QR code to see a tutorial on how to use this specialty fabric.





XX

# Congratulations & enjoy

XX



[artgalleryfabrics.com](http://artgalleryfabrics.com)

NOTE: While all possible care has been taken to ensure the accuracy of this pattern, We are not responsible for printing errors or the way in which individual work varies.

Please read instructions carefully before starting the construction of this quilt. If desired, wash and iron your fabrics before starting to cut.