



Pigmentos



FREE PATTERN



Pigmentos

DESIGNED BY *AGFstudio*

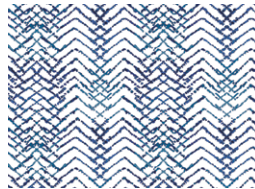


Aquarelle

FABRICS DESIGNED BY KATARINA ROCCELLA



AQU-66750
IMPRESSIONIST WASH CRISP



AQU-66751
TACHISME LUMINOUS



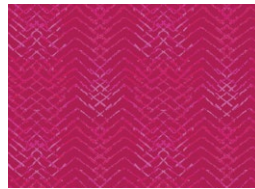
AQU-66752
ANEMONE STUDY MIDNIGHT



AQU-76759
BUTTERCUPS STILL LIFE



AQU-76750
IMPRESSIONIST WASH FRESH



AQU-76751
TACHISME MAGENTA



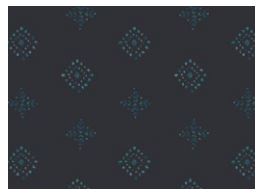
AQU-76752
ANEMONE STUDY MORNING



AQU-76753
STIPLING PRACTICE LIGHT



AQU-76755
GESTURAL LINES



AQU-76756
RHOMBASTIC NEGATIVE



AQU-76757
FLORAL PIGMENTS DRY



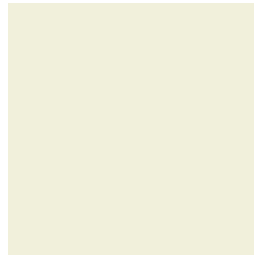
ADDITIONAL BLENDERS FOR THIS PROJECT



PE-451
ICY MINT



PE-403
FRESH WATER



PE-408
WHITE LINEN



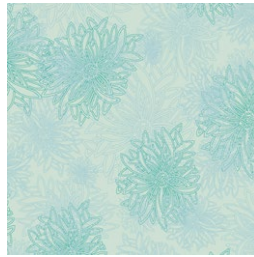
PE-452
SPRUCE



PE-470
LAVANDER WATER



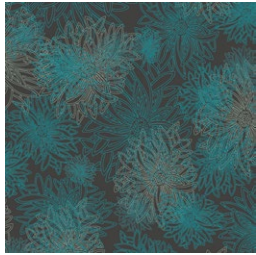
PE-495
FIELD OF LAVENDER



FE-519
ICY BLUE



FE-508
AQUA HAZE



FE-505
DEEP OCEAN

Pigmentos

FINISHED SIZE | 12½" x 12½"

FABRIC REQUIREMENTS

Block 1

Fabric A	AQU-66752	F8.
Fabric B	AQU-66751	F8.
Fabric C	AQU-76756	F8.
Fabric D	AQU-76750	F8.
Fabric E	PE-495	F8.
Fabric F	PE-470	F8.
Fabric G	FE-543	F8.

Block 2

Fabric A	AQU-76750	F8.
Fabric B	AQU-76755	F8.
Fabric C	AQU-76751	F8.
Fabric D	AQU-76759	F8.
Fabric E	PE-452	F8.
Fabric F	FE-505	F8.
Fabric G	PE-408	F8.

Block 3

Fabric A	AQU-76752	F8.
Fabric B	AQU-76759	F8.
Fabric C	FE-505	F8.
Fabric D	AQU-76750	F8.
Fabric E	PE-403	F8.
Fabric F	PE-451	F8.
Fabric G	FE-508	F8.

Block 4

Fabric A	AQU-76757	F8.
Fabric B	AQU-76753	F8.
Fabric C	AQU-76756	F8.
Fabric D	AQU-76752	F8.
Fabric E	PE-451	F8.
Fabric F	FE-519	F8.
Fabric G	FE-508	F8.

CUTTING DIRECTIONS

¼" seam allowances are included.
WOF means width of fabric.

- Twelve (12) 2" squares from fabric **A**.
- Eight(8) 5" x 2" rectangles from fabric **B**.
- Four (4) 2" squares from fabric **C**.
- One (1) 5½" square from fabric **D**.
- Eight(8) 2" squares from fabric **E**.
- One (1) 5½" square from fabric **F**.
- Eight(8) 3½" x 2" rectangle from fabric **G**.

CONSTRUCTION

Sew all rights sides together with ¼" seam allowance.

Four at a time HST method:

- Start by placing one 5½" Square from fabric **D** and **F** right sides together.
- Sew all around the square at leaving ¼" seam allowance.
- Mark diagonal lines corners to corners on the wrong side of fabric square.
- Using your rotary blade, cut the square following the drawn lines.
- Press each HST and trim to a 3½" squares.

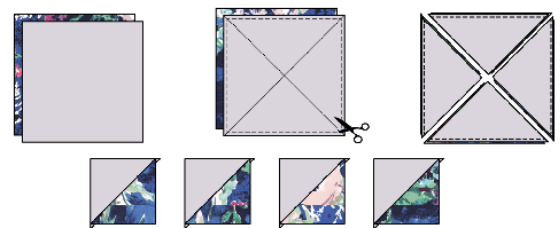


DIAGRAM 1

- Take one (1) 2" square from fabric **E** and place it on the right edge of one (1) 3½" x 2" rectangle from fabric **G**.
- Draw a diagonal line from the top right corner to the bottom left corner of the 2" square from fabric **E**.
- Sew on the drawn line and trim excess fabric measuring ¼" away from the stitch.
- Make a total of four G-Ea.



DIAGRAM 2

- Repeat the same step with one (1) 2" square from fabric **A** and one (1) 5" x 2" rectangle from fabric **B**. make a total of four B-Aa.

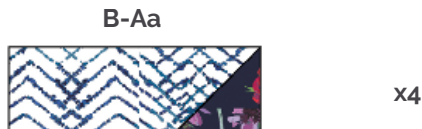
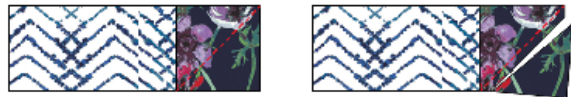


DIAGRAM 3

- Take one (1) 2" square from fabric **E** and place it on the right edge of one (1) 3½" x 2" rectangle from fabric **G**.
- Draw a diagonal line from the top left corner to the bottom right corner of the 2" square from fabric **E**.
- Sew on the drawn line and trim excess fabric measuring ¼" away from the stitch.
- Make a total of four G-Eb.

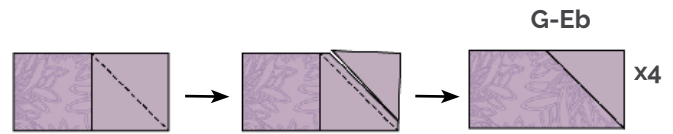


DIAGRAM 4

- Repeat the same step with one (1) 2" square from fabric **A** and one (1) 5" x 2" rectangle from fabric **B**.
- Make a total of four B-Ab.

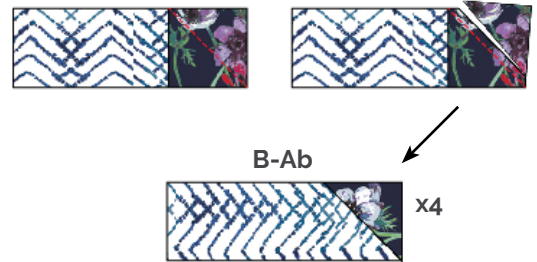


DIAGRAM 5

Block Construction

- Sew one (1) D-F half square triangle with one (1) G-Eb unit.



DIAGRAM 6

- Sew one (1) G-Ea unit with one (1) 2" square from fabric **C**.



DIAGRAM 7

- Sew the two units previously sewn.

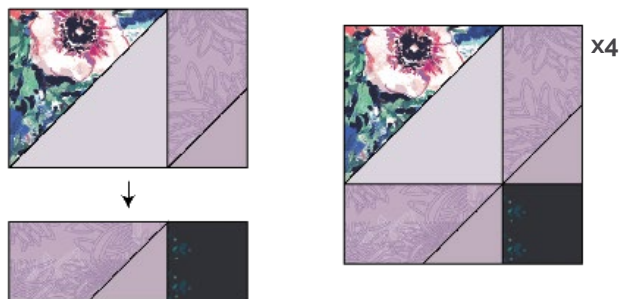


DIAGRAM 8

- Add one (1) B-Ab to the right side of the unit.

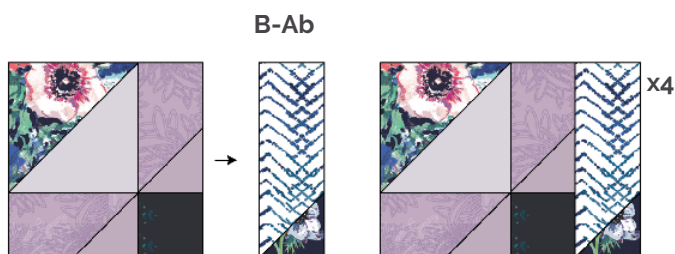


DIAGRAM 9

- Sew one (1) B-Aa unit with one (1) 2" square from fabric **A**.

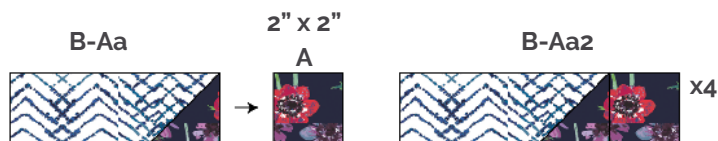


DIAGRAM 10

- Sew one (1) B-Aa2 unit to the bottom of the sewn unit. Repeat this step 3 more times. you should have a total of four blocks.

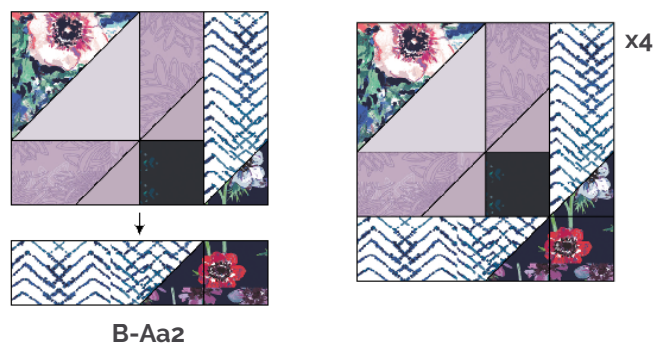


DIAGRAM 11

- Arrange the four blocks in two rows of two blocks each.

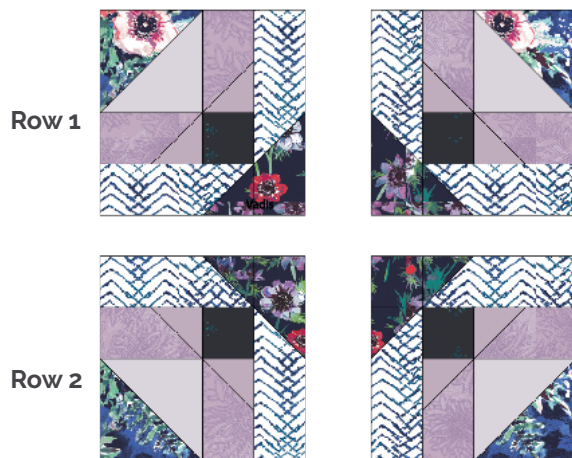


DIAGRAM 12

- Sew rows together.



DIAGRAM 13

XX

- Quilt as desired.



DIAGRAM 14

XX

*Congratulations
& enjoy*

XX



artgalleryfabrics.com

NOTE: While all possible care has been taken to ensure the accuracy of this pattern, We are not responsible for printing errors or the way in which individual work varies.

Please read instructions carefully before starting the construction of this quilt. If desired, wash and iron your fabrics before starting to cut.

© 2024 Courtesy of Art Gallery Quilts LLC. All Rights Reserved.