



# BORO BORO

QUILT DESIGNED BY *AGFstudio*

## Soul FUSION

FABRICS DESIGNED BY AGF



**Fabric A**  
FUSSO2805  
BOUNTIFUL DAISIES SOUL  
by Pat Bravo



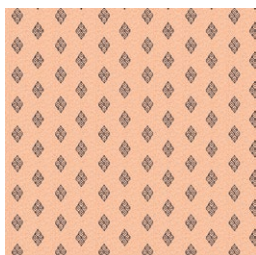
**Fabric B**  
FUSSO2804  
MINDFUL PATHS SOUL  
by AGF Studio



**Fabric C**  
FUSSO2809  
EIDELWEISS SOUL  
by Amy Sinibaldi



**Fabric D**  
FUSSO2802  
VIE DE BOHÈME SOUL  
by Pat Bravo



**Fabric E**  
FUSSO2808  
KUMBU FIBERS SOUL  
by Katarina Roccella



**Fabric F**  
FUSSO2803  
FLEURON SOUL  
by Sharon Holland



**Fabric G**  
FUSSO2801  
SWEET NOSTALGIA SOUL  
by Elizabeth Chappell



# BORO BORO

FINISHED SIZE | 12" x 15"

## FABRIC REQUIREMENTS

Fabric <b>A</b>	FUSSO2805	FQ.
Fabric <b>B</b>	FUSSO2804	FQ.
Fabric <b>C</b>	FUSSO2809	FQ.
Fabric <b>D</b>	FUSSO2802	FQ.
Fabric <b>E</b>	FUSSO2808	FQ.
Fabric <b>F</b>	FUSSO2803	FQ.
Fabric <b>G</b>	FUSSO2801	½ yd.

### EXTRA MATERIALS

Medium-weight Interfacing ½ yd  
Faux Leather ½ yd  
Batting ½ yd

### LINING FABRIC

Fabric **G** FUSSO2801 *(Included)*

## CUTTING DIRECTIONS

¼" seam allowances are included.  
WOF means width of fabric.

### Fabric A:

- One (1) 11" x 4½" rectangle.
- One (1) 11" x 2" rectangle.
- Two (2) 5½" x 2½" rectangles.

### Fabric B:

- One (1) 11" x 3" rectangle.
- One (1) 7" x 2" rectangle.
- One (1) 5½" x 2½" rectangle.
- One (1) 2½" square.

### Fabric C:

- One (1) 15½" x 2" rectangle.
- One (1) 9½" x 3" rectangle.
- One (1) 8½" x 2" rectangle.
- One (1) 7" x 4½" rectangle.
- One (1) 7" x 2½" rectangle.
- One (1) 3" square.

### Fabric D:

- One (1) 7" square.
- One (1) 4" x 6" rectangle.
- One (1) 4½" square.

### Fabric E:

- One (1) 3" square.

### Fabric F:

- One (1) 11" x 2½" rectangle.
- One (1) 7" x 4½" rectangle.
- One (1) 3½" x 2½" rectangle.

### Fabric G:

- Two (2) 12½" x 15½" rectangles.

### Faux Leather:

- Two (2) 15½" x 4" rectangles.

## CONSTRUCTION

Sew all rights sides together with  $\frac{1}{4}$ " seam allowance.  
Press after each seam.

### FRONT Construction.

- Follow the steps to attach the pieces together.

#### BLOCK 1

- Take one (1)  $2\frac{1}{2}$ " square from fabric **B** and one (1)  $3\frac{1}{2}$ " x  $2\frac{1}{2}$ " rectangle from fabric **F** and attach them together as shown in the diagram below **FB**.



DIAGRAM 1

- Bring one (1)  $5\frac{1}{2}$ " x  $2\frac{1}{2}$ " rectangle from fabric **A** and attach it to the previous **FB** piece



DIAGRAM 2

- Bring one (1)  $4\frac{1}{2}$ " square from fabric **D** and attach it to the previous **AFB** piece.



DIAGRAM 3

- Bring one (1)  $9\frac{1}{2}$ " x 3" rectangle from fabric **C** and attach it to the previous **DAFB** piece.



DIAGRAM 4

- Bring one (1) 7" x 2" rectangle from fabric **B** and attach it to the previous **CDAFB** piece.



DIAGRAM 5

- Bring one (1) 11" x 2" rectangle from fabric **A** and attach it to the previous **BCDAFB** piece.



DIAGRAM 6

- Bring one (1) 8½" x 2" rectangle from fabric **C** and attach it to the previous **ABCDAFB** piece.
- Set aside.



DIAGRAM 7

BLOCK 2

- Bring one (1) 3" square from fabrics **C** & **E** and attach them together as shown in the diagram below **EC**.

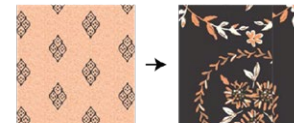


DIAGRAM 8

- Bring one (1) 5½" x 2½" rectangle from fabric **A** and attach it to the previous **EC** piece.



DIAGRAM 9

- Bring one (1)  $5\frac{1}{2}$ " x  $2\frac{1}{2}$ " rectangles. from fabric **B** and attach it to the previous **AEC** piece.

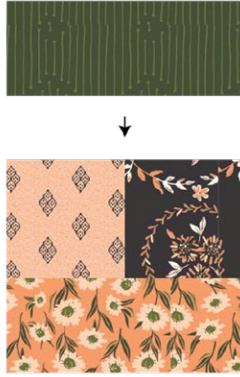


DIAGRAM 10

- Bring one (1) 7" x  $2\frac{1}{2}$ " rectangle from fabric **C** and attach it to the previous **BAEC** piece.
- Set aside.



DIAGRAM 11

### BLOCK 3

- Bring one (1) 4" x 6" rectangle from fabric **D** & **F** and attach them together as shown in the diagram below **DF**.



DIAGRAM 12

- Attach BLOCK 3 on top of BLOCK 2 as shown in the diagram below.



DIAGRAM 13

- Attach BLOCK 1 to the previous piece as shown in the diagram below.



DIAGRAM 14



BLOCK 5

- Bring one (1) 11" x 2" rectangle from fabric **A** and one (1) 11" x 2½" rectangle from fabric **F**, attach them together as shown in the diagram below **AF**.



DIAGRAM 18

- Attach BLOCK 4 and BLOCK 5 as shown in the diagram below.



DIAGRAM 19

- XXXXXXXXXXXXXXXXXXXXXXXXXXXXXXXXXXXX
- Bring one (1) 15½" x 2" rectangle from fabric **C** and attach it to the bottom of the previous piece as shown in the diagram below.



DIAGRAM 20

- Bring one (1) 15½" x 4" rectangle of faux leather and attach it to the bottom of the previous sewn piece as shown in the diagram below.

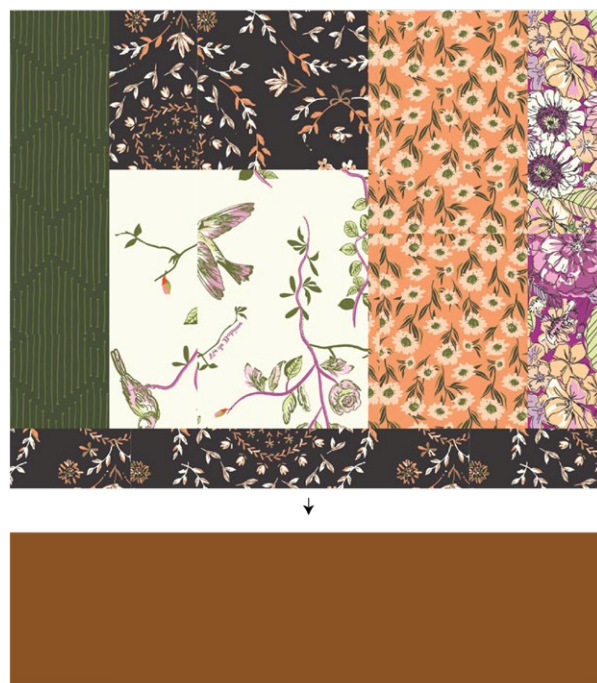


DIAGRAM 21a





DIAGRAM 21b

- Take your FRONT and BACK pieces add batting and quilt if desired, make sure you quilt on top of the patchy fabrics part only, do not quilt the Faux leather.

## FABRIC STRAPS & BAG CONSTRUCTION

- Cut two 32" x 1¾" strips from fabric **C** and gate fold them as shown on diagram below. Press, fold 1" again, press and top stitch, feel free to add faux leather to the ends if desired.

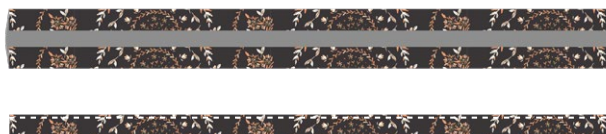


DIAGRAM 22

- Sew the straps to the FRONT and BACK pieces, make sure that they align on both sides.



DIAGRAM 23

- Take two FRONT and BACK pieces and place them right sides facing.
- Sew all three sides leaving the top insewn.



DIAGRAM 24

- Now, bring two (2) 12½" x 15½" rectangles for the lining and repeat the same previous steps for the lining fabric but this time leave a 3" opening on one of the sides.

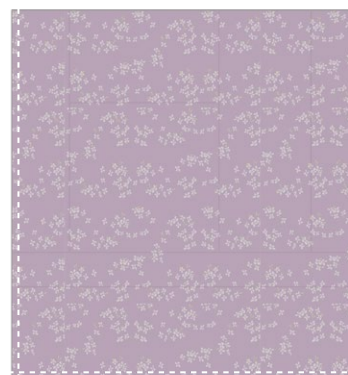


DIAGRAM 25

- Insert the lining inside the tote bag, right sides facing together, making sure the handles are inside and in between the exterior fabric and lining fabric make sure that sides are touching and pin in place.
- Sew the top of the tote and pull your piece through the lining opening.
- Close the lining opening by hand or machine.
- Press your tote.

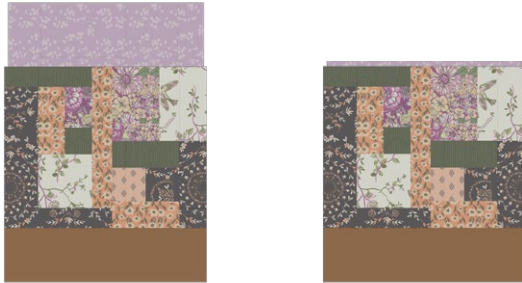


DIAGRAM 26

XXXXXXXXXXXXXXXXXXXXXXXXXXXXXXXXXXXX

*Congratulations  
& enjoy*

XXXXXXXXXXXXXXXXXXXXXXXXXXXXXXXXXXXX



[artgalleryfabrics.com](http://artgalleryfabrics.com)

NOTE: While all possible care has been taken to ensure the accuracy of this pattern, We are not responsible for printing errors or the way in which individual work varies.

Please read instructions carefully before starting the construction of this quilt. If desired, wash and iron your fabrics before starting to cut.

© 2024 Courtesy of Art Gallery Quilts LLC. All Rights Reserved.