

Imagine Flower

LUNCH BAG



Imagine Flower

LUNCH BAG

DESIGNED BY AGFstudio



the flower FIELDS

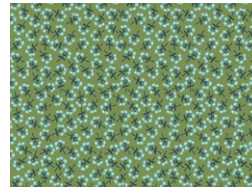
FABRICS DESIGNED BY MAUREEN CRACKNELL



Fabric A
FLF85903
CHERISHED GRACE



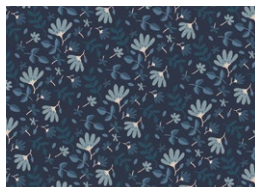
Fabric B
FLF85909
BLOOMING BURST SUNSET



Fabric C
FLFS95905
SWEET FLORET GRAZE



Fabric D
FLFS95903
HARMONY BURST FLAX



Fabric E
FLF85913
FLOWERET FOG



Fabric F
FLF85911
JOYFUL HOMAGE



Imagine Flower LUNCH BAG

FINISHED SIZE | 13" x 16"

FABRIC REQUIREMENTS

Fabric A	FLF85903	F8.
Fabric B	FLF85909	F8.
Fabric C	FLFS95905	F8.
Fabric D	FLFS95903	7/8.
Fabric E	FLF85913	F8.
Fabric F	FLF85911	5/8.

LINING FABRIC
FLFS95903 (Included)

CUTTING DIRECTIONS

*1/4" seam allowances are included.
WOF means width of the fabric.*

Fabric A:

- One (1) 10½" square.

Fabric B:

- One (1) template 2, 3, 4, 5 and 6.

Fabric C:

- One (1) template 7 and 8.

Fabric D:

- Two (2) 14½" x 19" rectangle. (Lining)
- One (1) 15½" square.

Sub cut:

- One (1) 10½" square on point (See diagram 1).

Fabric E

- Two (2) 12½" x 1½" strips.
- Two (2) 10½" x 1½" strips.

Fabric F

- One (1) 14½" x 19" rectangle.
- One (1) 14½" x 5½" rectangle.
- Two (2) 14" x 1½" strips.
- One (1) 12½" x 2" strip.
- Make a 10½" square with cardstock paper and place it on point on a 15½" square from fabric **D** and cut the the fabric using the template.



DIAGRAM 1

CONSTRUCTION

Sew all rights sides together with 1/4" seam allowance.

Use the measurement shown on diagram below to position the template 1 on one (1) 10½" square from fabric **D** and using an erasable pen trace template 1 onto fabric **D**. Now place one (1) 10½" square from fabric **A** under the 10½" square from fabric **D** and pin both fabrics to secure them.

- Sew 1/4" away from the pen trace you made from template 1. See diagram below for reference.

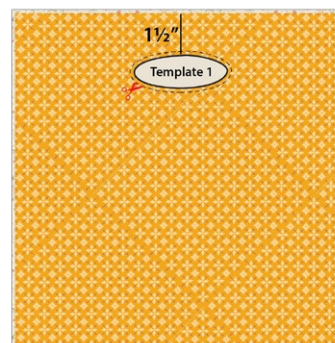


DIAGRAM 2

- Using a small scissors start cutting only the top fabric layer following the pen trace from template 1, and using steam a seam or double sided fusible interfacing, place templates 2, 3, 4, 5 and 6 from fabric **B** as shown on the diagram below.

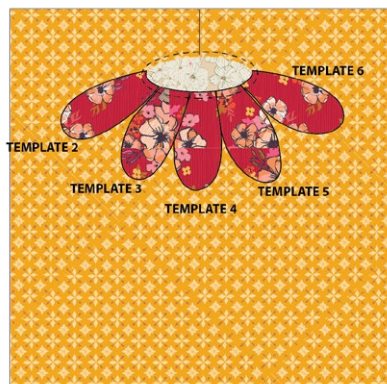


DIAGRAM 3

- Join one (1) $10\frac{1}{2}$ " x $1\frac{1}{2}$ " strip from fabric **E** on the top and bottom of the previously sewn piece.



DIAGRAM 4

- Join one (1) $12\frac{1}{2}$ " x $1\frac{1}{2}$ " strip from fabric **E** on each side of the same piece.

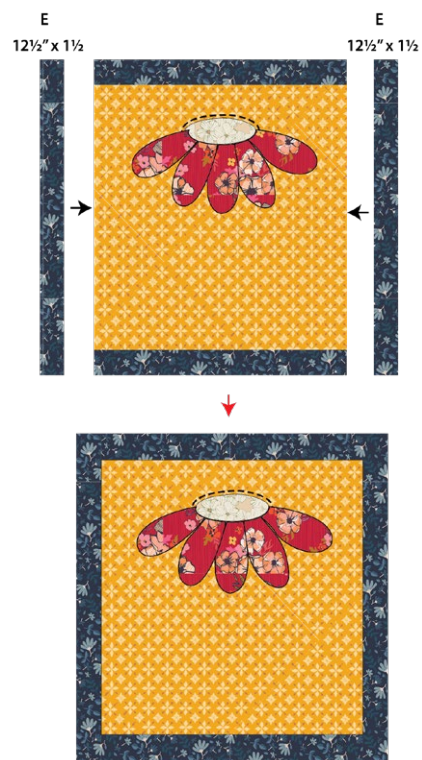


DIAGRAM 5

- Join one (1) $12\frac{1}{2}$ " x 2" strip from fabric **F** at the bottom and one (1) 14 " x $1\frac{1}{2}$ " strip from fabric **F** on each side of the same piece.

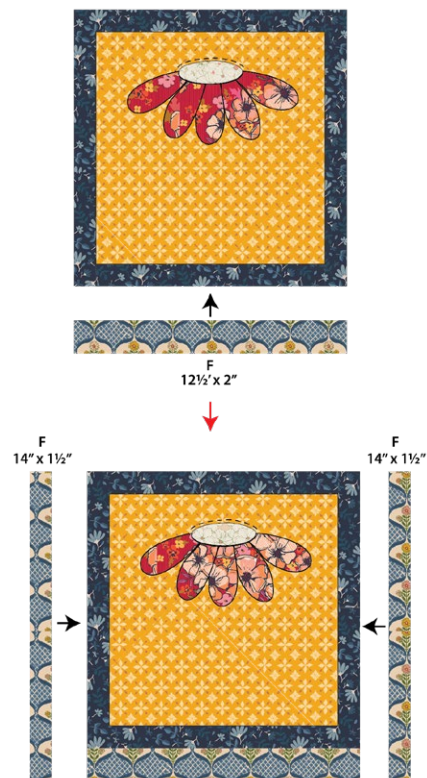


DIAGRAM 6

- Sew one (1) 14½" x 5½" strip from fabric **F** on the top of the same piece. See diagram below for reference.

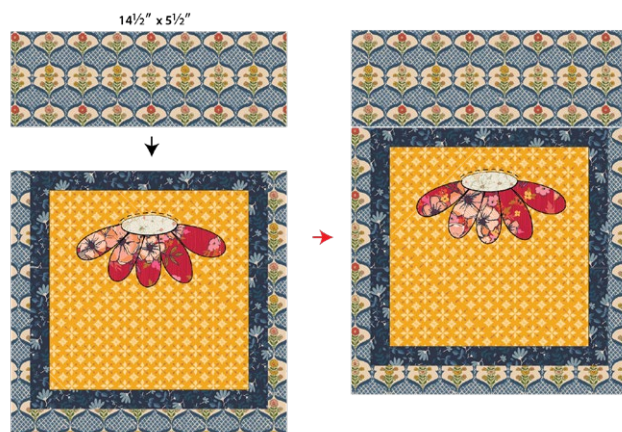


DIAGRAM 7

- Using an erasable pen draw a stem and with double sided fusible interfacing place template 7 and 8 as shown on diagram below, be careful with the drawn stem since the heat erases the pen mark, re apply with the pen the stem mark if is necessary.
- Place batting on the wrong side of the same piece and quilt as desired. Following the stem mark make a nice hand decorative stitch preferably chain stitch. Also quilt one (1) 14½" x 19" rectangle from fabric **F** (Back of the lunchbag piece).



DIAGRAM 8

- Now take both quilted pieces, place them right sides facing each other and sew both sides and bottom, leaving the top open.
- Repeat the same processs for the lining, but for the lining leave about 2" opening on one side.
- See diagram below for reference.

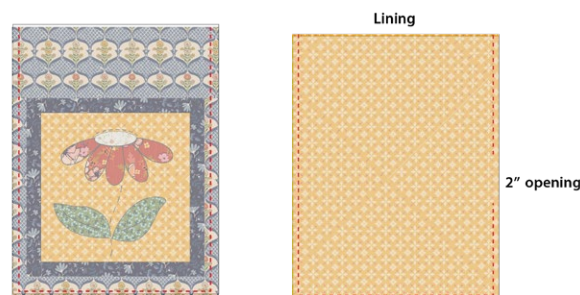


DIAGRAM 9

- Now, match up the bottom corners to each other and fold, forming a diamond shape.

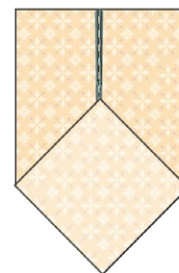


DIAGRAM 10

- On each diamond shape, measure 2" down from the point and mark a straight line with water soluble pen.

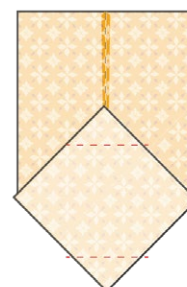


DIAGRAM 11

- Sew a straight line, then cut the excess fabric, leaving $\frac{1}{4}$ " - $\frac{1}{2}$ " of seam allowance.
- Repeat the same instructions for the lining piece.

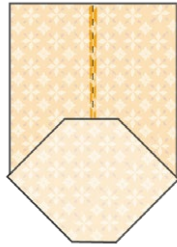


DIAGRAM 12

- Now, turn your piece inside out.
- Now, insert your main lunch bag inside the lining and sew the top part.
- Pull the main fabric through the opening side from the lining.
- Press and steam.

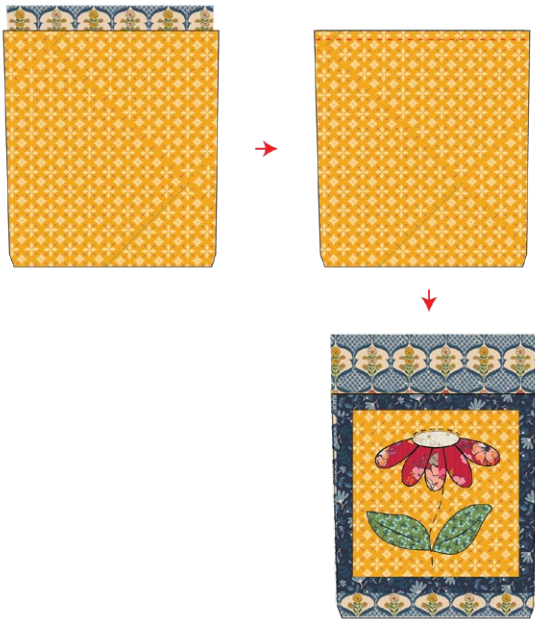
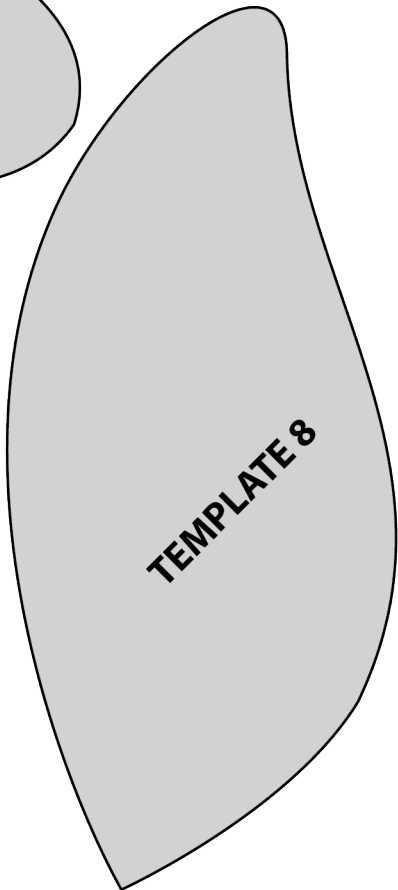
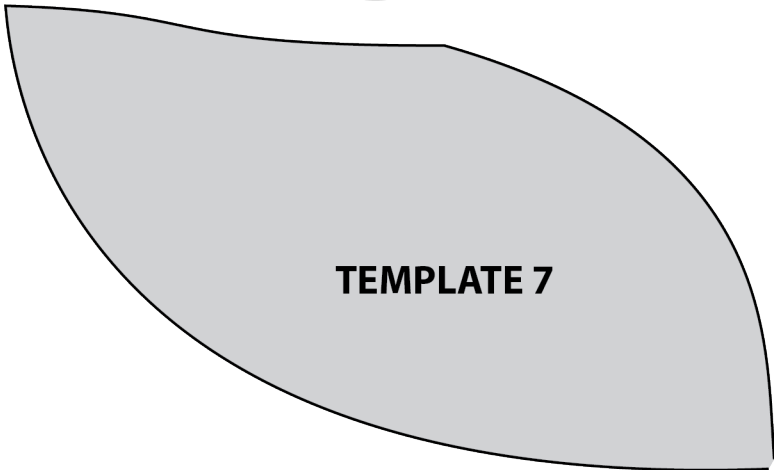
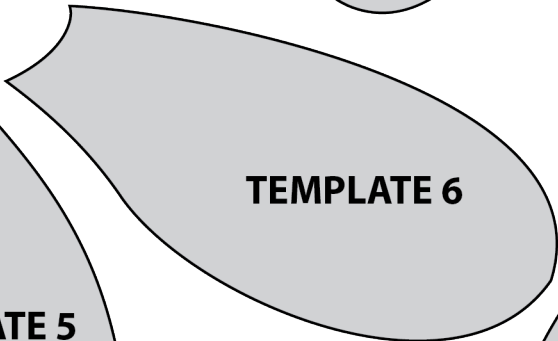
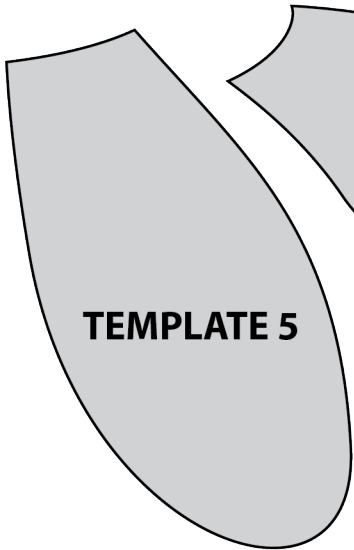
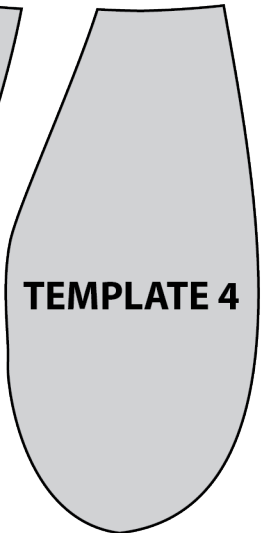
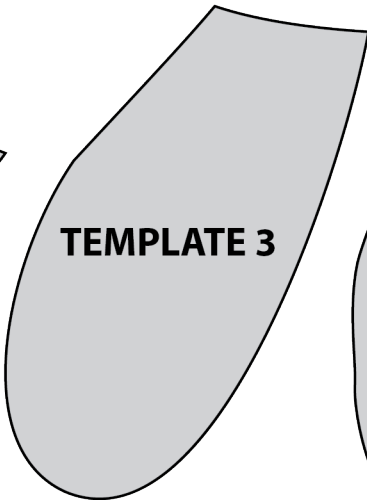
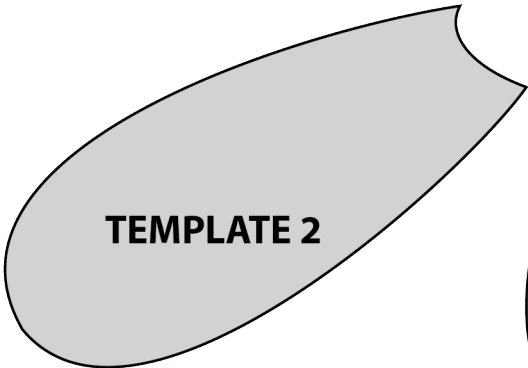
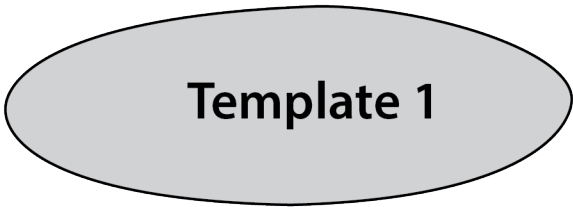
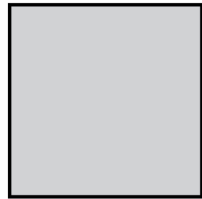


DIAGRAM 13

TEMPLATES

1" test square



XXXXXXXXXXXXXXXXXXXXXXXXXXXXXXXXXXXX

Congratulations
& enjoy

XXXXXXXXXXXXXXXXXXXXXXXXXXXXXXXXXXXX



artgalleryfabrics.com

NOTE: While all possible care has been taken to ensure the accuracy of this pattern, We are not responsible for printing errors or the way in which individual work varies.

Please read instructions carefully before starting the construction of this quilt. If desired, wash and iron your fabrics before starting to cut.

© 2023 Courtesy of Art Gallery Quilts LLC. All Rights Reserved.