

XXXXXX

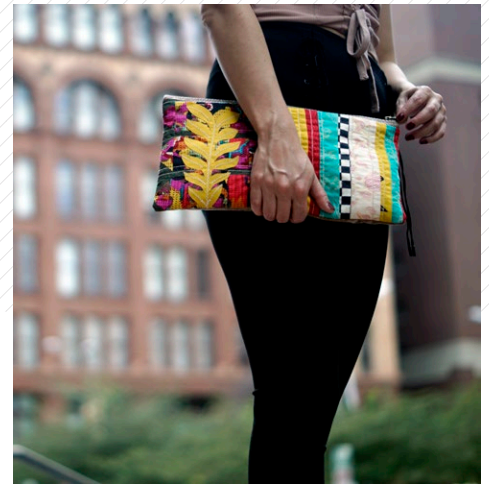
A hand with red-painted nails holds a rectangular clutch bag. The bag features a complex design of vertical panels with various patterns: a large yellow leaf on a dark background, a black and white checkerboard, solid yellow and red stripes, a teal paisley pattern, and a white background with pink floral motifs. The top of the bag has a brown zipper. The background is a lush display of pink and red flowers.

XXXXXXXXXXXXXXXXXXXXXXXXXXXX





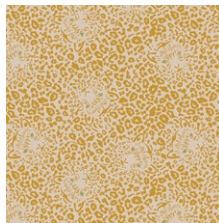
FABRICS DESIGNED BY PAT BRAVO



ALWAYS WITH ME



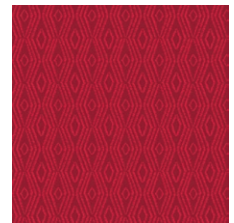
NUC-11980
FLOWERS EVERYWHERE
INTENTION



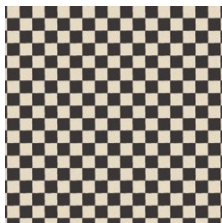
NUC-11981
PRETTY EYES TWINKLY



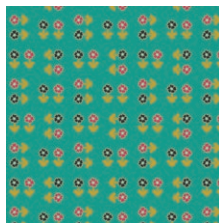
NUC-11982
PAISLEYS FOREVER
BOHEME



NUC-11983
JUST MORE RED



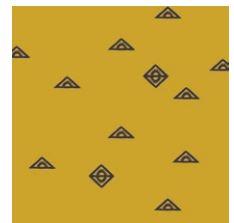
NUC-11985
DANCE THIS TANGO



NUC-11987
ALWAYS DO GOOD CIELO



NUC-11988
BUENOS AIRES SUD

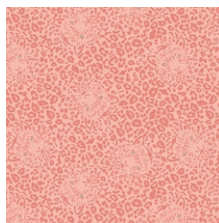


NUC-11989
FAITH

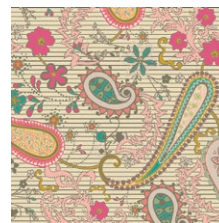
ALWAYS HERE



NUC-21980
FLOWERS EVERYWHERE
CARESS



NUC-21981
PRETTY EYES SWEET



NUC-21982
PAISLEYS FOREVER ROSA



NUC-21984
THE RIGHT PATH



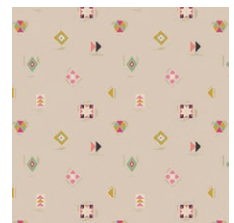
NUC-21986
GOODNESS THOUGHTS



NUC-21987
ALWAYS DO GOOD AMOR



NUC-21988
BUENOS AIRES PAMPA



NUC-21990
LET'S SEW SOMETHING



FEEL THE DIFFERENCE © 2023 Courtesy of Art Gallery Quilts LLC. All Rights Reserved.



FINISHED SIZE | 13¼" x 7"

FABRIC REQUIREMENTS

Fabric A	NUC-11980	Fat 8.
Fabric B	NUC-11983	⅝ yd.
Fabric C	NUC-11985	⅝ yd.
Fabric D	NUC-11988	¼ yd.
Fabric E	NUC-11989	Fat 8.
Fabric F	NUC-21988	Fat 8
Fabric G	PE-482	⅝ yd.
Fabric H	PE-483	Fat 8

Extras

14" zipper

½ yd Faux leather

CUTTING DIRECTIONS

¼" seam allowances are included.
WOF means width of fabric.

- One (1) 2½" x 7½" strip from fabric A
- Six (6) 1½" x 2½" strips from fabric A
- Six (6) 1⅝" squares from fabric A
- One (1) ¾" x 7½" strip from fabric B
- One (1) 1" x 7½" strip from fabric B
- Two (2) 1" x 7½" strips from fabric C
- One (1) 2" x 7½" strip from fabric D
- One (1) 1½" x 7½" strip from fabric E
- One (1) 1" x 7½" strip from fabric E
- One (1) 1½" x 7½" strip from fabric F
- One (1) 1" x 7½" strip from fabric F
- Six (6) 1⅝" squares from fabric G
- Eight (8) ¾" x 2½" strips from fabric G
- Two (2) 1" x 7½" strips from fabric G
- One (1) template from fabric H

CONSTRUCTION

Sew all rights sides together with ¼" seam allowance.

- Take all the strips from fabrics B-F.
- Attach them in the order CEBFCDEFB.
- Refer to the diagram below for strips placement.
- Iron press and set aside.



DIAGRAM 1

- Take one 1⅝" square from fabric A and one 1⅝" squares from fabric G.
- Cut the squares diagonally to make two AG HST.
- Bring one 1½" x 2½" strip from fabric A.
- Attach the two HST together creating a flying geese.
- Then attach the 1½" x 2½" strip as shown in the diagram below.

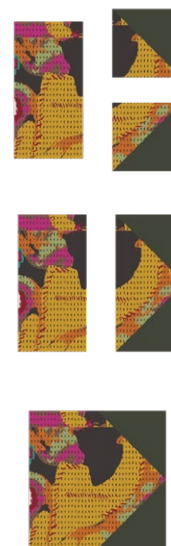


DIAGRAM 2

- Repeat the previous steps from diagram 2 in order to complete a total of six sets.

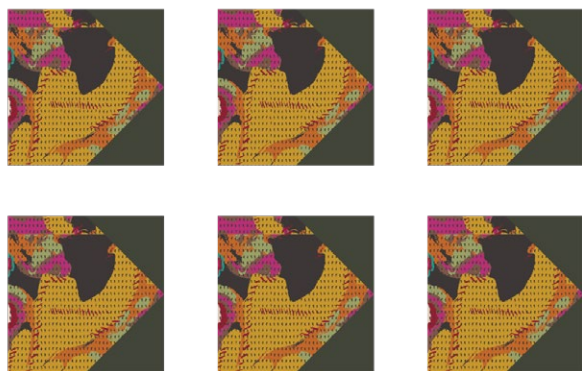


DIAGRAM 3

- Take four $\frac{3}{4}$ " x $2\frac{1}{2}$ " strips from fabric G and three of the previous pieces.
- Start attaching the strips in between the pieces alternating their order as shown in the diagram below.
- Repeat this steps one more time with the remaining four $\frac{3}{4}$ " x $2\frac{1}{2}$ " strips.



DIAGRAM 4

- Now bring the $2\frac{1}{2}$ " x $7\frac{1}{2}$ " strip from fabric A and attach one column to each side of the fabric A strip.

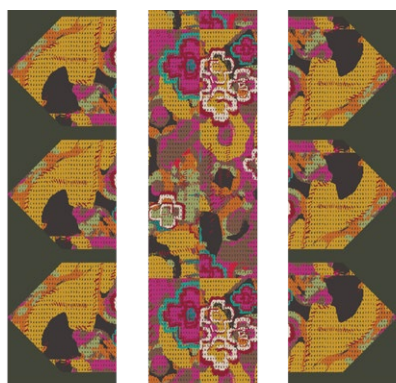


DIAGRAM 5

- Take the template from fabric H and applique on top using Steam-A-Seam.
- Top stitch to secure.



DIAGRAM 6

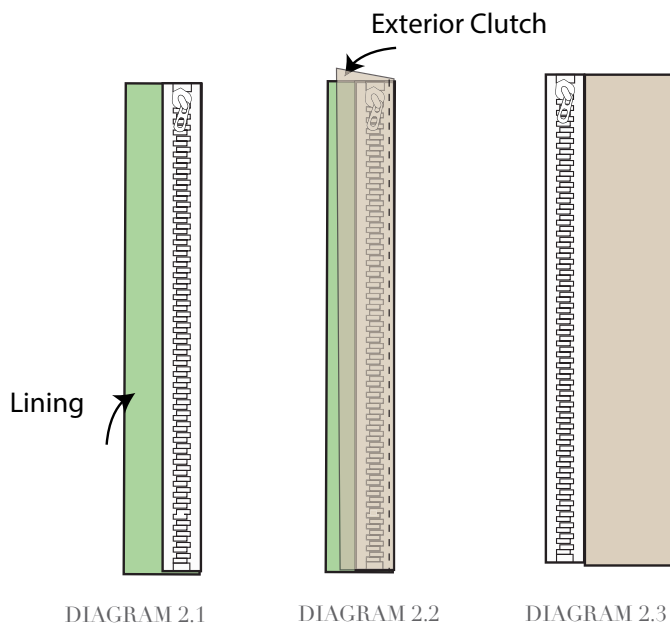
- Bring the strip piece from diagram 1 and attach it to the other piece.



DIAGRAM 7

ZIPPER CONSTRUCTION

- Insert your zipper foot
- Take lining and front clutch and sandwich them inbetween your 14" zipper.
- Using a zipper foot sew as close to the zipper teeth as possible.
- Sew the two pieces of fabric with right sides together with the zipper sandwiched inbetween the two pieces of fabric
- Press fabric away from zipper and edge stitch the seam allowance to the lining sewing as close the edge as possible..
- Repeat process for the other side of the zipper using your other lining piece and back clutch.



- Unzip zipper. Take the two fronts of the clutch and pin right sides together.
- Take the lining pieces and pin right sides together.
- Now you can sew all the way around leaving the bottom portion of the lining of the clutch, that way you don't damage your applique.
- Pull right side of the fabric through the unsewn portion. Hand stitch or machine stitch unsewn portion closed.
- Press and enjoy!!!



artgalleryfabrics.com

NOTE: While all possible care has been taken to ensure the accuracy of this pattern, We are not responsible for printing errors or the way in which individual work varies. Please read instructions carefully before starting the construction of this quilt. If desired, wash and iron your fabrics before starting to cut.

