

Soft Love

PILLOW



FREE PATTERN

XXXXXXXXXXXXXXXXXXXXXXXXXXXX



Soft Love

PILLOW

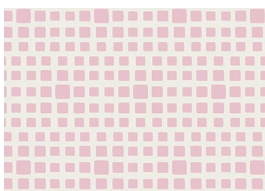
DESIGNED BY AGFstudio

AGF Holiday BUNDLES

LOVEY DOVEY EDITION



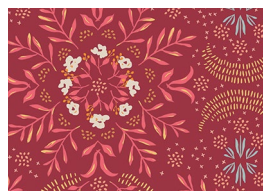
CBHFQ605
12 FAT QUATER BUNDLE



Fabric A
SE619
TUTU



Fabric B
TRB010
BUTTERFLY BLISS



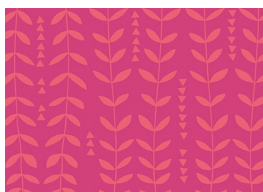
Fabric C
TRB7009
FIREFLY SEVEN



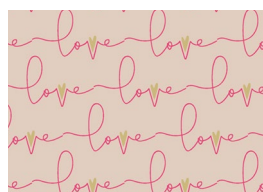
Fabric D
MAF79209
PICCADILLY



Fabric E
FE528
BUBBLEGUM



Fabric F
TRB8003
KELP STORM



Fabric G
OPH24356
WRITTEN LOVE SOFT



FEEL THE DIFFERENCE

© 2023 Courtesy of Art Gallery Quilts LLC. All Rights Reserved.

Soft Love

PILLOW

DESIGNED BY AGFstudio

FINISHED SIZE | 34" x 20"

FABRIC REQUIREMENTS

Fabric A	SE619	FQ.
Fabric B	TRB1010	FQ.
Fabric C	TRB7009	FQ.
Fabric D	MAF79209	FQ.
Fabric E	FE528	FQ.
Fabric F	TRB8003	FQ.
Fabric G	OPH243561	$\frac{5}{8}$ yd.

CUTTING DIRECTIONS

$\frac{1}{4}$ " seam allowances are included.
WOF means width of the fabric.

- Three (3) $2\frac{1}{2}$ " x 18" strips from fabric **A**.
- Two (2) $2\frac{1}{2}$ " x 18" strips from fabric **B**.
- Two (2) $2\frac{1}{2}$ " x 18" strips from fabric **C**.
- Three (3) $2\frac{1}{2}$ " x 18" strips from fabric **D**.
- Four (4) $2\frac{1}{2}$ " x 18" strips from fabric **E**.
- Two (2) $2\frac{1}{2}$ " x 18" strips from fabric **F**.
- Two (2) $34\frac{1}{2}$ " x $6\frac{1}{2}$ " rectangles from fabric **G**.
- Two (2) 24 " x $20\frac{1}{2}$ " rectangles from fabric **G**

(Back of pillow).

CONSTRUCTION

Sew all rights sides together with $\frac{1}{4}$ " seam allowance.

Strip Set 1:

- Take one (1) $2\frac{1}{2}$ " x 18" strip from fabrics **E**, **D**, **F** and **C** and join them as shown on diagram 1.



DIAGRAM 1

- Cut three (3) $2\frac{1}{2}$ " vertical strips.



DIAGRAM 2

Strip Set 2:

- Take one (1) $2\frac{1}{2}$ " x 18" strip from fabrics **A**, **E**, **D** and **F** and join them as shown on diagram 3.



DIAGRAM 3

- Cut four (4) $2\frac{1}{2}$ " vertical strips.

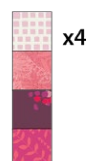


DIAGRAM 4

Strip Set 3:

- Take one (1) $2\frac{1}{2}$ " x 18" strip from fabrics **B**, **A**, **E** and **D** and join them in the the following order



DIAGRAM 5

- Cut four (4) $2\frac{1}{2}$ " vertical strips.

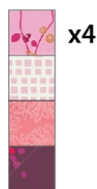


DIAGRAM 6

Strip Set 4:

- Take one (1) $2\frac{1}{2}$ " x 18" strip from fabrics **C**, **B**, **A** and **E** and join them as shown on diagram below.



DIAGRAM 7

- Cut six (6) $2\frac{1}{2}$ " vertical strips.



DIAGRAM 8

- Take two (2) strips and unsew fabric **E** square and place them on top of fabric **C**, having now the order of these two strip sets as **E**, **C**, **B**, **A**.
- We will call them Strip **Set 4.1**

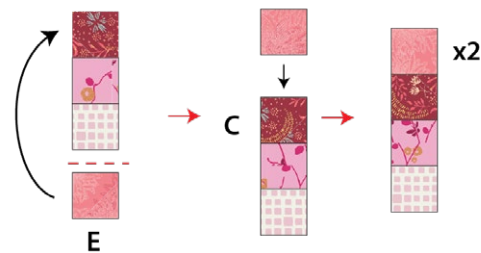


DIAGRAM 9

- Take all your strip sets and join them following the order on the diagram below.

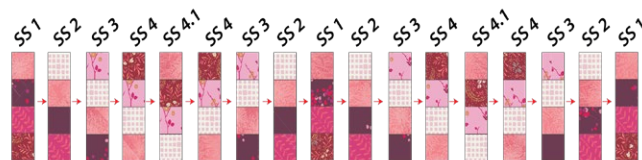


DIAGRAM 10

- Join one (1) $34\frac{1}{2}$ " x $6\frac{1}{2}$ " rectangle to the top and one to the bottom of the assembled piece from diagram 10.

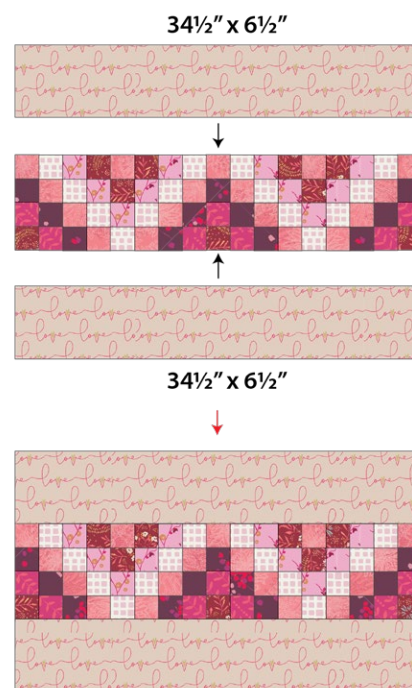


DIAGRAM 11

BACKING

- Take the two (2) 24" x 20½" rectangles from fabric **G**.
- Fold one side edge ½" towards the wrong side of the fabric of one of the rectangles.
- Fold the same edge ½" again and edge stitch the fold in place to have a clean edge.
- Repeat the same step with the other rectangle.
- Take the quilted pillow top and lay it flat right side up.
- Take one rectangle from fabric **G** and align it wrong side up to the left side of the pillow top.
- Take the other rectangle from fabric **G** and align it wrong side up to the right side of the pillow top.
- Pin the three pieces in place and sew around the edges at ¼".
- Clip the corners and flip the piece to the right side of the fabric.
- Fill the pillow with a 34" x 20" pillow form and enjoy!

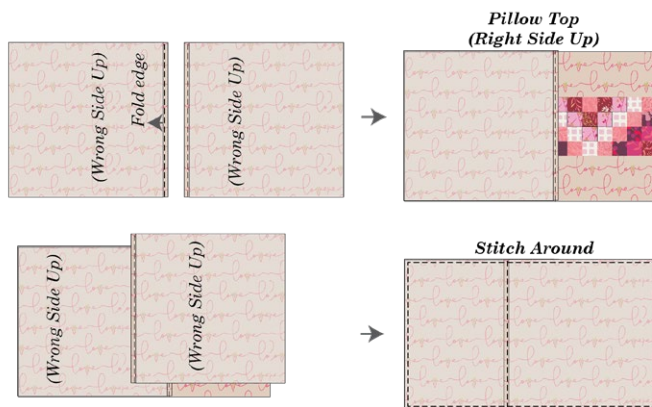


DIAGRAM 12

Congratulations
& enjoy



artgalleryfabrics.com

NOTE: While all possible care has been taken to ensure the accuracy of this pattern, We are not responsible for printing errors or the way in which individual work varies.

Please read instructions carefully before starting the construction of this quilt. If desired, wash and iron your fabrics before starting to cut.

© 2023 Courtesy of Art Gallery Quilts LLC. All Rights Reserved.