

# ROAD TO ROUND TOP *Collection*

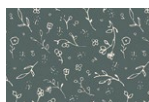
## PROJECT SHEET



Some of the projects featured in our lookbooks link back to patterns that were originally created in the past with different fabric selections. This project sheet will serve you as a quick reference to find and replace with the specific fabrics we used for this project. Happy sewing!

# Road to Round Top

FABRICS DESIGNED BY ELIZABETH CHAPPELL



**BACKGROUND**  
RRT14603  
DELICATE  
BLOSSOMS



**PETALS**  
RRT14608  
DAY TRIP



**FLOWERS CENTER**  
RRT14610  
ROADSIDE  
FIELDS



**BINDING**  
RRT14608  
DAY TRIP



**BACKING**  
RRT14610  
ROADSIDE  
FIELDS

### PROJECT INFO



PROJECT NAME: FRESH AND DAISY

DESIGNED BY: PEN AND PAPER PATTERNS

FINISHED SIZE: 59½" x 63½"

[CLICK HERE FOR PATTERN](#)

PATTERN AVAILABLE FOR PURCHASE

FABRIC REQUIREMENTS

PLEASE CONSULT PATTERN FOR YARDAGE REQUIREMENTS.